

THE LANCET

Supplementary appendix

This appendix formed part of the original submission and has been peer reviewed. We post it as supplied by the authors.

Supplement to: The IST-3 collaborative group. The benefits and harms of intravenous thrombolysis with recombinant tissue plasminogen activator within 6 h of acute ischaemic stroke (the third international stroke trial [IST-3]): a randomised controlled trial. *Lancet* 2012; published online May 23. DOI:10.1016/S0140-6736(12)60768-5.

Web appendix contents:

Web table 1: Additional baseline data.

Web table 2: Adherence to trial protocol and background stroke care.

Web table 3: Oxford Handicap Scale at 6 months in patients with known disability status:

Web figure 1 Kaplan Meier survival curve to 6 months

List of participating hospitals

Web table 1 Additional baseline data

| | rt-PA | | Control | |
|---|-------|-------|---------|-------|
| | No. | (%) | No. | (%) |
| Number randomised | 1515 | | 1520 | |
| Baseline variables collected before treatment allocation ¹ | | | | |
| Clinician's assessment of pre-randomisation scan | | | | |
| No evidence of recent ischaemic change | 894 | (59%) | 898 | (59%) |
| Possible evidence of recent ischaemic change | 361 | (24%) | 340 | (22%) |
| Definite evidence of recent ischaemic change | 260 | (17%) | 282 | (19%) |
| Baseline variables collected from pre-randomisation scan | | | | |
| Lesion territory | | | | |
| MCA or ACA or Borderzone | 589 | (39%) | 555 | (37%) |
| Posterior | 22 | (1%) | 36 | (2%) |
| Lacunar | 11 | (1%) | 5 | (<1%) |
| Indeterminate ³ | 885 | (59%) | 914 | (61%) |
| Lesion size | | | | |
| None | 885 | (59%) | 914 | (61%) |
| Small | 110 | (7%) | 97 | (6%) |
| Medium | 250 | (17%) | 250 | (17%) |
| Large | 124 | (8%) | 137 | (9%) |
| Very large | 138 | (9%) | 112 | (7%) |
| Depth of tissue damage | | | | |
| None | 892 | (59%) | 922 | (61%) |
| Mild | 503 | (33%) | 492 | (33%) |
| Severe | 112 | (7%) | 96 | (6%) |
| Degree of swelling | | | | |
| None | 1152 | (76%) | 1171 | (78%) |
| Mild Sulcal | 283 | (19%) | 265 | (18%) |
| Mild Ventricular | 71 | (5%) | 73 | (5%) |
| Moderate | 1 | (<1%) | 0 | (0%) |
| Severe ⁴ | 0 | (0%) | 1 | (<1%) |
| Location of hyperdense arteries | | | | |
| None | 1131 | (75%) | 1151 | (76%) |
| Anterior | 360 | (24%) | 342 | (23%) |
| Posterior | 16 | (1%) | 17 | (1%) |
| Evidence of atrophy | 1161 | (77%) | 1166 | (77%) |
| Evidence of periventricular lucencies | 765 | (51%) | 782 | (52%) |
| Evidence of old lesions | 685 | (45%) | 651 | (43%) |
| Evidence of non-stroke lesions | 73 | (5%) | 77 | (5%) |
| Baseline variables collected from seven-day form | | | | |
| Pre-trial history of stroke | 354 | (23%) | 345 | (23%) |
| Pre-trial treatment with aspirin | 639 | (47%) | 667 | (49%) |
| Pre-trial treatment with dipyridamole | 66 | (5%) | 59 | (4%) |
| Pre-trial treatment with clopidogrel | 69 | (5%) | 77 | (6%) |
| Pre-trial treatment with anticoagulants | | | | |
| Warfarin or other oral anticoagulant | 61 | (4%) | 57 | (4%) |

| | rt-PA | | Control | |
|---|-------|-------|---------|-------|
| | No. | (%) | No. | (%) |
| Heparin ⁵ (low dose) | 15 | (1%) | 5 | (0%) |
| None of the above | 1292 | (94%) | 1309 | (95%) |
| Pre-trial treatment for hypertension | 975 | (64%) | 979 | (65%) |
| Pre-trial treatment for diabetes | 184 | (12%) | 204 | (13%) |
| Phase of trial in which patient recruited | | | | |
| Blinded | 136 | (9%) | 140 | (9%) |
| Open | 1379 | (91%) | 1380 | (91%) |
| Patients recruited in centre with pre-trial experience of thrombolysis ⁶ | 575 | (38%) | 568 | (37%) |

NIH = National Institutes of Health, TACI= Total Anterior Circulation Infarct, PACI = Partial Anterior Circulation Infarct, LACI = Lacunar Infarct, POCI = Posterior Circulation Infarct, MCA = middle Cerebral Artery, ACA = Anterior Cerebral Artery

1. These variables were collected via the web-based or telephone randomisation system and had to be entered, complete and passed range and consistency checks before the system would issue a treatment allocation. Variables marked with an asterisk* were employed in the minimisation algorithm.
2. Expert panel's blinded assessment of pre-randomisation scan. This assessment was performed by the expert panel members after randomisation & blinded to treatment allocation and all clinical details.
3. Indeterminate because no infarct was visible.
4. Two patients in Control group were randomised at more than 6 hours (protocol violation). One of these was recorded as having severe swelling on the randomisation scan, it was later discovered that the stroke had occurred about 24 hours earlier.
5. Heparin: unfractionated or low-molecular weight heparin.
6. Pre-trial experience of thrombolysis is defined as the centre had, before joining the trial, a protocol for open label rtPA and had treated at least 3 people in the 12 months before joining the trial; 76 (49%) centres met this criterion.

Web table 2 Adherence to treatment protocol and background stroke care

| | rt-PA (n= 1515) | | Control (n=1520) | |
|--|--------------------|---------|---------------------|---------|
| | No. | (%) | No. | (%) |
| Eligibility deviations | | | | |
| Dependent pre-stroke ¹ | 8 | (0.5%) | 9 | (0.6%) |
| Haemorrhage on pre-randomisation scan | 1 | (0.1%) | 0 | (0.0%) |
| Advanced ischaemic change on pre-randomisation scan ² | 0 | (0.0%) | 1 | (0.1%) |
| Tumour or non-stroke lesion on pre-randomisation CT ³ | 0 | (0.0%) | 0 | (0.0%) |
| Pre-randomisation low dose heparin | 16 | (1.1%) | 6 | (0.4%) |
| Systolic BP <90 or >220 mmHg or diastolic BP <40 or >130 mmHg | 0 | (0.0%) | 0 | (0.0%) |
| Glucose outside allowable limits (3.0 to 20 mmol/l) | 0 | (0.0%) | 0 | (0.0%) |
| Thrombolysis for stroke within previous 14 days | 0 | (0.0%) | 1 | (0.1%) |
| Infusion compliance among those allocated rt-PA⁴ | | | | |
| Did not get bolus | 26 | (1.7%) | . | |
| Got bolus, but did not start infusion | 4 | (0.3%) | . | |
| Got bolus, started infusion, but halted, wrong total dose ⁵ | 29 | (1.9%) | . | |
| Got bolus, started infusion, but halted, right total dose | 62 | (4.1%) | . | |
| Got bolus and infusion, wrong total dose ⁵ | 45 | (3.0%) | . | |
| Got bolus and infusion, right dose | 1348 | (89.0%) | . | |
| Infusion compliance among those allocated placebo or open control⁶ | | | | |
| Blinded phase : got bolus, but did not start infusion | . | | 1 | (0.1%) |
| Blinded phase : got bolus, started infusion, but halted | . | | 6 | (0.4%) |
| Blinded phase : got bolus and planned infusion | . | | 133 | (8.8%) |
| Open phase : did not receive rtPA | . | | 1368 | (90.3%) |
| Open phase : received at least some rtPA | . | | 7 | (0.5%) |
| Treatments given within 24 h | | | | |
| Double-blind phase | | | | |
| Aspirin given | 12 | (8.8%) | 10 | (7.1%) |
| Other antiplatelet given | 1 | (0.7%) | 0 | (0.0%) |
| No antiplatelet given | 123 | (90.4%) | 130 | (92.9%) |
| Low dose heparin for DVT prophylaxis given | 6 | (4.4%) | 4 | (2.9%) |
| Full dose heparin given ⁷ | 1 | (0.7%) | 0 | (0.0%) |
| Intravenous fluids given ⁸ | 11 | (73.3%) | 8 | (47.1%) |
| Insulin given ⁸ | 0 | (0.0%) | 1 | (5.9%) |
| Open phase ⁹ | | | | |
| Aspirin given | 183 | (13.3%) | 1044 | (75.8%) |
| Other antiplatelet given | 53 | (3.8%) | 218 | (15.8%) |
| No antiplatelet given | 1167 | (84.8%) | 271 | (19.7%) |
| Low dose heparin for DVT prophylaxis given | 46 | (3.3%) | 223 | (16.2%) |
| Full dose heparin given | 17 | (1.2%) | 52 | (3.8%) |
| Intravenous fluids given | 838 | (62.1%) | 804 | (59.4%) |
| Insulin given | 96 | (7.1%) | 99 | (7.3%) |
| Other treatments given between 24 h and 7 days | | | | |
| Aspirin given | 1114 | (73.8%) | 1284 | (84.7%) |
| Other antiplatelet given | 318 | (21.1%) | 401 | (26.5%) |
| Low dose heparin or LMWH for DVT prophylaxis given | 315 | (20.9%) | 406 | (26.8%) |
| Full anti-coagulation ¹⁰ | 117 | (7.7%) | 122 | (8.1%) |
| Any treatment to lower blood pressure | 890 | (58.9%) | 889 | (58.7%) |
| Any non-trial thrombolysis | 3 | (0.2%) | 0 | (0.0%) |

| | rt-PA (n= 1515) | | Control (n=1520) | |
|---|-----------------------|---------------------------------|-----------------------|---------------------------------|
| | No. | (%) | No. | (%) |
| Antibiotics | 378 | (27.7%) | 361 | (26.4%) |
| Feeding via nasogastric tube or percutaneous gastronomy | 256 | (18.8%) | 304 | (22.2%) |
| Place of treatment in 7 days since randomisation | N¹¹ | Median stay¹² | N¹¹ | Median stay¹² |
| | (%) | | (%) | |
| | 1392 | | 1402 | |
| Admissions area ¹³ | 30 (2.2%) | 2 | 40 (2.9%) | 1 |
| High dependency ward, intensive care ward or critical care area | 328 (23.6%) | 1 | 237 (16.9%) | 1 |
| Stroke unit or stroke rehabilitation unit | 1248 (89.7%) | 6 | 1252 (89.3%) | 6 |
| General Ward ¹⁴ | 215 (15.4%) | 4 | 219 (15.6%) | 5 |

1. In the early part of the trial, patients with a minimal degree of pre-stroke dependency could be included. After a protocol amendment to change eligibility, the randomisation programme was changed in September 2004 and such patients could not be included in the remainder of the trial.
2. Marked degree of ischaemic change on pre-randomisation CT or MR incompatible with onset less than 6 hours previously.
3. Tumour or non-stroke lesion sufficient to account for symptoms leading to randomisation.
4. Base of percentages is number with infusion record (1514).
5. Dose violations occur when dose given is greater than 10% above or below the prescribed dose, or when a Control patient in the Open phase received any dose of rt-PA.
6. Base of percentages is number with infusion record (1515).
7. Full-dose unfractionated heparin or high-dose low molecular weight heparin.
8. Questions on intravenous fluids and insulin were only added in 2004. Hence few participants in the blinded phase were asked these questions (15 rt-PA, 17 Control).
9. Patients in the control arm of the open phase who receive these drugs are not protocol violators, but are shown here for information. Base of percentages is number with valid seven-day follow-up in given trial phase and treatment group.
10. Full-dose unfractionated heparin, high-dose low molecular weight heparin or oral anticoagulants.
11. N is the number of patients who spent at least one night on the particular type of ward. The base of percentages is the number of patients who spent at least one night in any of these ward types This question was not asked in the early part of the trial (pre 2003).
12. Median number of nights spent among patients who stayed at least one night in given type of ward.
13. Accident and Emergency Department or Medical admissions unit.
14. General Ward: Neurology Ward, Geriatric Medicine Ward, General Internal Medicine Ward, Neurosurgical Ward, Geriatric Ward, Rehabilitation Ward or Other Ward.

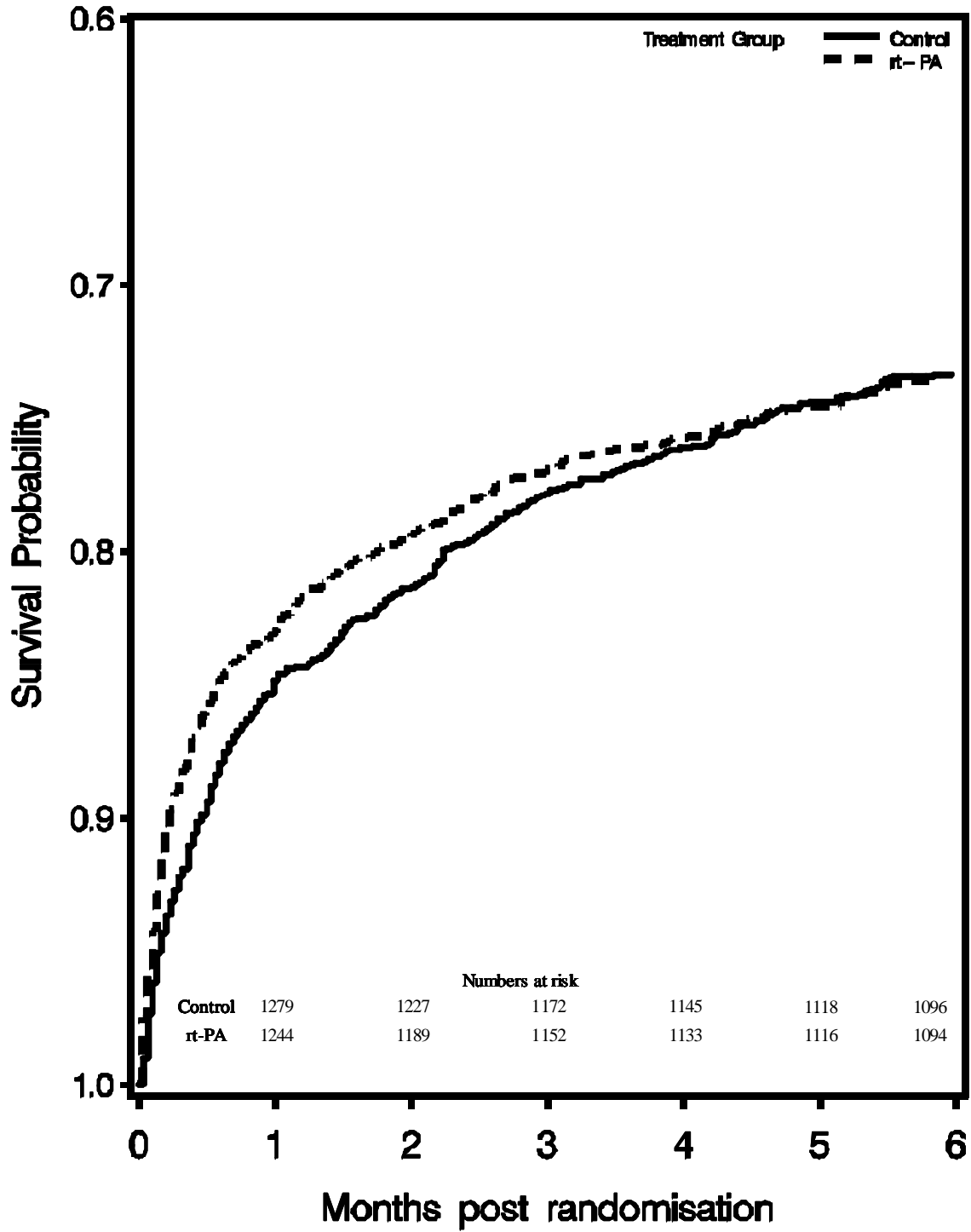
Webtable 3: Outcomes at six months for patients with known disability status

| | rt-PA | | Placebo | | Adjusted analysis ¹ | | Unadjusted analysis ² | | Difference per 1000 (95% CI) |
|--|-------|-------|---------|-------|--------------------------------|-------|----------------------------------|--------|------------------------------|
| | N | (%) | N | (%) | OR (95% CI) | P | OR (95% CI) | P | |
| No. randomised | 1515 | | 1520 | | | | | | |
| No. with known 6 month disability status | 1473 | | 1466 | | | | | | |
| Oxford Handicap Score | | | | | | | | | |
| 0 | 137 | (9%) | 116 | (8%) | | | | | |
| 1 | 225 | (15%) | 204 | (13%) | | | | | |
| 2 | 183 | (12%) | 200 | (13%) | | | | | |
| 3 | 234 | (15%) | 192 | (13%) | | | | | |
| 4 | 115 | (8%) | 140 | (9%) | | | | | |
| 5 | 171 | (11%) | 207 | (14%) | | | | | |
| 6 (Died before 6 months) | 408 | (27%) | 407 | (27%) | 0.94 (0.79 , 1.13) | 0.533 | 1.00 (0.85 , 1.18) | 0.969 | 1 (-31, 32) |
| Alive and favourable outcome (0+1) | 362 | (25%) | 320 | (22%) | 1.25 (1.03 , 1.51) | 0.026 | 1.17 (0.98 , 1.39) | 0.078 | 28 (1, 58) |
| Alive and independent (0+1+2) | 545 | (37%) | 520 | (35%) | 1.14 (0.95 , 1.36) | 0.160 | 1.07 (0.92 , 1.25) | 0.389 | 15 (-19, 50) |
| Total deaths < 7 days | 163 | (11%) | 107 | (7%) | 1.60 (1.22 , 2.08) | 0.001 | 1.59 (1.22 , 2.07) | <0.001 | -37 (-57, -17) |

Notes:

1. OR = Odds Ratio. Odds ratio and p value calculated from logistic regression after adjusting for age (linear), NIHSS (linear), time (linear) and presence/absence of visible acute ischaemic change on baseline scan as judged by the expert reader. The two cases with delay time greater than 6 hours were omitted from the adjusted analysis.
2. Significance p value calculated from test of difference between percentages for rt-PA and Control, using normal approximation.
3. Oxford Handicap Scale:
 0. No symptoms at all. 1. Symptoms, but these do not interfere with everyday life. 2. Symptoms which have caused some changes in lifestyle but still able to look after oneself. 3. Symptoms which have significantly changed lifestyle and need some help in looking after oneself. 4. Severe symptoms requiring help from other people but not so bad as to need attention day and night. 5. Severe handicap needing constant attention day and night.
4. Primary outcome shown in bold

Web Figure 1



Web Figure. Kaplan Meier plot of survival to six months. The dotted line is the treatment group and the solid line the control. Deaths at day 0 excluded from at risk at day 0. Logrank test of difference in survival curves: P=0.83

List of participating hospitals in each country.

Figures in parentheses are the number of patients recruited in the country or by the centre. **UK (1447)** Royal Hallamshire Hospital (118): G Venables, C Blank, H Bowler, C Doyle, K Endean, K Harkness, E Parker, M Randall. University Hospital of North Staffordshire (97): C Roffe, N Ahmad, A Arora, S Brammer, J Chembala, B Davies, S Ellis, E Epstein, K Finney, C Jackson, C Jadun, R Kinston, H Maguire, I Memon, I Natarajan, M Poulson, R Sanyal, S Sills, A Vreeburg, E Ward. Western General Hospital (95): P Sandercock, R Al-Shahi Salman, R Davenport, M Dennis, P Hand, S Hart, I Kane, S Keir, M MacLeod, L McKinlay, H Milligan, E Sandeman, J Stone, C Sudlow, P Taylor, J Wardlaw, C Warlow, W Whiteley, A Williams. The National Hospital for Neurology & Neurosurgery (84): M Brown, B Athwal, V Bassan, N Bhupathiraju, J Bowler, C Davie, D Doig, R Erande, S Gilbert, L Ginsberg, R Greenwood, S Gregoire, N Harding, N Losseff, R Luder, N Passeron, R Perry, P Rayson, R Simister, S Stone, D Werring. Arrowse Park Hospital (83): J Barrett, H Aitken, S Cherian, R Davis, S Downham, L Godd, V Gott, D Jose, V Little, D Lowe, L Luxford, M McGrory, P Owings, N Price, J Richards, G Sangster, J Sherlock, S Vargese, I Wakefield, P Weir. Southend University Hospital (77): P Guylar, T Attygale, S Chandler, L Coward, S Feasey, C Khuoge, T Loganathan, S Martin, A O'Brien, D Sinha, V Thompson, S Tysoe, R Walsh. Norfolk and Norwich University Hospital (67): K Metcalf, J Cochius, R Fulcher, N Gange, C Green, J Jagger, M Lee, P Myint, J Potter, G Ravenhill, S Shields, N Shinh, T Staunton, E Thomas, W Woodward, P Worth, N Wyatt. Nottingham City Hospital (63): W Sunman, P Bath, P Berman, J Clarke, C Gaynor, F Hammonds, R Harwood, K Mitchell, S Munshi, S Pacey, A Shetty, N Sprigg, H Stear, G Subramanian, A Wills. Guy's & St.Thomas Hospital (60): A Rudd, H Audebert, A Bhalla, J Birns, R Chowdhury, G Cluckie, I Davies, C Gibbs, P Holmes, N Mitchell, F Schiavone, E White, M Yeung. Darlington and Bishop Auckland Hospitals (56): A Mehrzad, V Baliga, E Brown, L Burnside, B Esisi, J Kent, P Orr, D Stead, E Wayman. University Hospital Aintree (46): R Durairaj, C Cullen, R Kumar, H Martin, D McDowell, A Sharma, V Sutton, R White. University Hospital of Wales (46): T Hughes, K Ali, J Anderson, K Baker, K Bethune, K Bethune, M Booth, M Cossburn, S Halpin, M Hourihan, E Marsh, K Peall, R Powell, H Shetty, M Wardle, M Williams. Derby Royal Hospital (37): K Muhiddin, J Beavan, M Clarke, R Donneley, S Elliott, P Fox, P Gorman, M Harper, M Mangoyana, I Memon, L Mills, L Wright. Addenbrookes Hospital (34): L Warburton, J Baron, P Barry, D Day, T Harold, P Martin, J Mitchell, E O'Brien, J Rycarte, M Turnham. St George's Healthcare NHS Trust (34): G Cloud, L Choy, B Clarke, C Griffin, O Halse, I Jones, F Kennedy, U Khan, R Lewis, A Loosemore, C Lovelock, H Markus, B Moynihan, J O'Reilly, O Paul, A Pereira, M Punter, P Rich, D Rolfe, F Schiavone. Royal Devon & Exeter Hospital (Wonford) (30): M James, J Bell, A Bowring, L Boxall, J Cageao, H Eastwood, S Elyas, F Hall, S Harries, A Hemsley, S Jackson, S Keenan, P Mudd, A Sekhar, D Strain, J Sword, N Wedge. Aberdeen Royal Infirmary (26): M MacLeod, M Bruce, A Joyson, M Kemp, K McMullan, J Reid, O Robb, J Webster, S Wilkinson. Hammersmith Hospitals & Imperial College (24): P Sharma, P Bentley, H Jenkins, A Kar, T Sachs. Northwick Park Hospital (20): D Cohen, R Bathula, J Devine, M Mpelembue. William Harvey Hospital (20): D Hargroves, I Balogun, L Cowie, A Maidment, D Rand, J Rowe, H Rudenko, D Smithard, L Wray. Scarborough Hospital (17): J Paterson, J Brown, J Hampton, S Jamieson, R Rose, A Volans. Countess of Chester Hospital NHS Foundation Trust (17): K Chatterjee, G Abbott, R Brookes, C Castle, C Kelly, S Leason, A Nallasivan, A Sen. Watford General Hospital (17): D Collas, M Cottle, N Damani, P Jacob, D Oza, D Werring. University Hospitals Coventry & Warwickshire NHS Trust (15): A Kenton, N Adab, L Aldridge, H Allroggen, Y Brown, R Cross, L Galvin, K Ghosh, A Grubneac, A Lindahl, H Mehta, M Pritchard, C Randall, P Ray, A Shehu, S Thelwell. Royal Bournemouth & Christchurch NHS Trust (12): D Jenkinson, J Bell, T Black, O David, J Kwan, A Orpen, C Ovington, D Tiwari, Z ud Din Babar. Leeds General Infirmary (12): A Hassan, A Bailey, J Bamford, C Bedford, R Bellfield, J Cooper, L Dunsmure, J Greig, M Keeling, L Mandizvidza, J Rankine, E Roberts, P Wanklyn, T Webb, S Williamson. York Health Services NHS Trust (12): J Coyle, S Crane, C Croser, P Duffey, R Evans, E Iveson, M Keeling, G Kitching, M Porte, C Rhymes. Queen Elizabeth Hospital (Gateshead) (12): D Barer, M Armstrong, M Bokhari, T Cassidy, B McClelland. Queen Elizabeth The Queen Mother Hospital (10): G Gunathilagan, P DOLKE, S Jain, S Jones, A Maidment, L Rosser, G Thomas, C White. Worcestershire Royal Hospital (10): P Sanmuganathan, C Scholtz, E Stratford. Blackpool Victoria Hospital (10): M O'Donnell, H Goddard, G Hoadley, J Howard, S Leach, J McIlmoyle, A Stewart, A Strain. Basildon & Thurrock University Hospitals NHS FT (9): F Huwez, P Croot, N Gadi, N Mguni, U Umasankar. Royal Infirmary of Edinburgh (8): G Mead, B Chapman, A Coull, S Hart, A Kinnear, B Morrow, F Morrow. St Mary's Hospital (8): D Ames, J Ball, S Bannerjee, J Chataway. Yeovil District Hospital (8): K Rashed, C Buckley, D Donaldson, D Hayward, C Lawson. Luton and Dunstable Hospital (8): L Sekaran, K Bharaj, F Justin, G Jutlla, D Phiri, S Sethuraman, M Tate. Solihull Hospital, Heart of England NHS Trust (8): D Sandler, P Carr, G Jones, J Lyons, K Warren. King's College Hospital (7): L Kalra, A Davis, J Jarosz, D Manawadu, L Sztrihia. Doncaster Royal Infirmary (7): D Chadha, A Holford, P Willcoxson. Royal United Hospital Bath (7): L Shaw, D Button, A Cunningham, L Dow, J Dutson, T Hall, C Hardy, N Jakeman, P Kaye, B Madigan, K O'Brien, D Pressdee, M Price, L Robinson, C Taylor, D Williamson. Birmingham Heartlands Hospital (6): D Sandler, P Carr, J Lyons, J McCormack, C Stretton. University Hospital North Durham (6): P Earnshaw, E Brown, S Bruce, C Church, S Desai, B Esisi, M Myint, N Watt. Wansbeck General Hospital (6): C Price, S Elliott, H Graham, R Lakey, K Mitchelson. Bristol Royal Infirmary (6): P Murphy, L Ball, S Caine, J Dovey, J Hughes, A Steele. Stepping Hill Hospital (6): K Dizayee, A Brown, T Chattopadhyay, J Cheetham, H Cochrane, A Datta, M Datta-chaudhuri, C Fox, D Kilroy, S Krishnamoorthy, F Levy, S Metha, P Ngoma, B Venkatesh. Princess Royal Hospital Brighton & Sussex University Hospitals Trust (5): K Ali, R Gautam, N Henderson, M Jones, S Murphy, G Spurling. Belfast City Hospital (5): I Wiggam, C Boyd, K Fullerton, P Gray, M Kinnaird, S MacNair, C Morgan, M Reid, S Tauro. Royal Liverpool University Hospital (5): S Loharuka, D Balmforth,

P Cox, G Fletcher, A Ledger, A Manoj, M Wilkinson. City Hospital, Sandwell & West Birmingham Hospital (5): D Nicholl, S Clegg, S Hurdowar, S Kausar, K Law, A Singal, S Sturman. Royal London Hospital (4): P Gompertz, J Evanson, A Farrell, A Petrou, K Saastamoinen, T Sachs, A Salek-Haddadi, R Yadava. Sunderland Royal Hospital (4): J O'Connell, H Brew, S Butler, S Crawford, C Gray, D Gulliver, N Majmudar, R O'Brien. Morriston Hospital (4): M Wani, L Dacey, L Davies, R Evans, D Harris, T Jones, S Storton. Royal Preston Hospital (4): S Punekar, A Ashton, S Duberley, H Emsley, C Gilmour, B Gregory, L Hough, S Philip, S Wuppalapati. The Royal Wolverhampton Hospitals NHS Trust (4): K Fotherby, P Bourke, D D'Costa, K Kauldhar, D Leung, R Lodwick, S McBride, D Morgan, M Qaiyum, G Sahota, M Srinivasan. Royal West Sussex NHS Trust, St Richard's Hospital (4): I Kane, N Chuter, L Garrad, M Hookway, S Ivatts, G Kennedy. Queen's Hospital Romford (4): K Darawil, L Al Dhahirl, S Andole, M Baig, P Dugh, K Dunne, H Kariuki, M Khan, S Rathnayaka. Ulster Hospital (3): M Power, K Dynan, J Finnerty, A Heaney, C Leonard, K McKnight, J Turkington, B Wroath. Great Western Hospital (3): B Dewan, S Cotton, M Gardiner, T Saunders, B Vincent. The Queen Elizabeth Hospital Birmingham (3): D Sims, P Guest, E Jones, J McCormack, D Nicholl, J Savanhu, R Tongue, M Willmot. Leicester General Hospital (3): D Eveson, S Dawson, M Dickens, M Fotherby, R Hunt, S Khan, T Kumar, R Marsh, A Mistri, T Robinson, J Thompson. Darent Valley Hospital, Dartford & Gravesham NHS Trust (3): P Aghoram, T Daniel, M Gatehouse, S Hussein, A Jackson, T Shanganya, E Strachan, G Tan. Nevill Hall Hospital, Aneurin Bevan Local Health (3): B Richard, S Elaine, S Hanson, S Mosely, H Reed, M Williams. Colchester Hospital University Foundation Trust (3): R Saksena, S Cook, D Demuran, M Keating, R Needle, V Paramsothy, A Sebastian, R Sivakumar, A Wright. Salford Royal Hospital Foundation NHS Trust (2): R Grue, E Barberan, C Dickson, C Douglas, J Jellicoe, T Marsden, J Priestley, E Quick, C Sherrington, A Singh, C Smith, J Stevens, P Tyrell, J Wainwright. Leicester Royal Infirmary (2): M Ardron, J Birchall. Queen Elizabeth Hospital (Kings Lynn) (2): R Shekhar, C Barsted, S Coleman, S Fletcher, J Graham. John Radcliffe Hospital (2): A Buchan, J Hinkle, J Kennedy, A Manoj, M Westwood. Derriford Hospital (2): A Mohd Nor, S Alder, B Hyams, A Pace. West Cumberland Hospital (1): E Orugun, C Brewer, L Huntley, R Jolly, C Summers. Sandwell General Hospital (1): K Sharobeem, J Khaira, J Leahy, E Linehan, G Moore, J Rizkalla, J Wilkinson. Torbay Hospital (1): D Kelly, C Hilaire. Warrington & Halton Hospitals NHS Foundation Trust (1): O Otaiku, L Connell, G Delaney-Sagar, G James, L Lomax, D Matthew, J Simpson, H Whittle. Medway Maritime Hospital (1): S Sanmuganathan, S Burrows, A Mahmood. Southampton General Hospital (1): G Durward, S Barker, J Cantle, P Crawford, S Evans, V Pressly, N Weir. Victoria Hospital (1): V Cvoro, K McCormick. **Poland** (347) 2nd Department of Neurology, Institute of Psychiatry & Neurology (190): A Czlonkowska, J Bembenek, M Bilik, G Chabik, W Czepiel, J Dzierka, M Gluszkiewicz, K Grabska, B Janus-Laszuk, J Jedrzejewska, A Kobayashi, T Litwin, A Oskedra, A Piorowska, M Skowronska, A Sliwinska, U Stepien. SPZZOZ w Sandomierzu (43): P Sobolewski, A Gajewska, M Grzesik, R Hatalaska-Zerebiec, I Labudzka, B Loch, A Medrykowska, M Sledzinska, A Sobota, W Szczuchniak, G Wolak, I Zdyb. Medical University of Gdansk (35): W Nyka, D Gasecki, K Chwojnicky, A Gojska, B Karaszewski, G Kozera, M Kwarcianny, M Nowak, M Swierkocka-Miastkowska, S Szczyrba, M Wisniewska, E Wnorowska. 1st Department of Neurology, Institute of Psychiatry & Neurology (25): P Richter, A Bochynska, M Chahwan, A Graban, R Rola. Military Medical Institute (24): A Stepien, B Brodacki, M Grotowska, J Kotowicz, J Staszewski, J Swistak, S Zaloga. Szpital Powiatowy (14): J Stoiński, K Czajkowaka-Fornal, P Czubak, A Kaczor, J Kraska, E Nowakowska-Sledz, J Ozdoba-Rot, E Zawadzka. Szpital Specjalistyczny w Konskich (8): M Fudala, D Adamczyk, W Broła, I Guldzińska, K Kaluzny, M Kucharska-Lipowska, M Mosiolek, M Polewczyk, M Ziomek. Central University Hospital (7): G Opala, M Arkuszewski, M Kudlacik, P Malgorzata, M Swiat. SPSK im. Prof. W. Orłowskiego CMKP (1): U Fiszer, M Lenska-Mieciek. **Italy** (326) Ospedale Di Citta' di Castello (62): S Cenciarelli, A Barilaro, R Conduro, F Coppola, S Dioguardi, E Gallinella, A Mattioni, C Menichetti, S Ricci. Nuovo Ospedale Civile "S. Agostino-Estense" (40): F Casoni, M Bacchelli, M Cavazzuti, M Malagoli, A Zini. Ospedale Beato Giacomo Villa - Citta' della Pieve (36): G Benemio, M Celani, R Allegrucci, V Bondo, S Cupella, L Guerra, S Guerrieri, C Ottaviani, E Righetti, C Rossi, N Sacchi, M Scucchi, V Stefanini. Ospedale Di Branca (36): T Mazzoli, A Bigaroni, L Greco, R Paris, P Parise, S Ricci. A.O. Niguarda Ca'Granda (25): A Ciccone, L Basso, R Causarano, P Doneda, E Ferrante, A Gatti, A Guccione, A Gullo, F Imbesi, S Jann, R Marazzi, E Moro, C Motto, D Parodi, A Protti, M Riva, A Rosiello, I Santilli, R Sterzi, P Tiraboschi, G Venturelli. R. Guzzardi Hospital - Vittoria (RG) (19): F Iemolo, R Campagna, G Campagnolo, A Carnemolla, N D'Apico, G D'Asta, S Giannarita, A Giordano, E Sanzar. Ospedale Regionale di Aosta (17): E Bottacchi, S Cordera, G Corso, M Di Giovanni, G Giardini, C Lia, T Meloni, M Pesenti Campagnoni, P Tosi. Ospedale Sacro Cuore - Negrar Verona (12): A Adami, G Rossato, T Zuppini. Ospedale Maggiore - Bologna (12): G Procaccianti, T Sacquegna. Università degli Studi di Genova (11): C Gandolfo, M Balestrino, C Bruno, L Castellani, M Del Sette, A Ferrari, C Finocchi, N Reale, D Rizzi. Ospedale Civile S. Andrea (9): M Del Sette, L Benedetti, C Capellini, E Carabelli, E Cibeï, M Godani, G Guariglia, E Landini, A Mannironi, B Nucciarone, S Parodi, S Tonelli, E Traverso, D Zito. Ospedale S. Giovanni Battista - Foligno (8): P Brustenghi, F Corea, O Flamini, S Lolli, G Pelliccia, R Ricci, S Stefanucci, M Zampolini. Ospedale a Vibo Valentia (8): D Consoli, F Galati, P Postorino. Azienda Ospedaliero-Universitaria "Ospedali Riuniti" di Foggia (8): G Rinaldi, E Carapelle, G Grilli, M Guido, L Specchio. Ospedale Valduce di Como (8): N Checcarelli, G Borin, L Chiveri, R Clerici, E Corengia, L Gandola, P Garavaglia, M Guidotti, A Martegani, M Mauri, F Muscia, F Raudino. Ospedale di Cattinara - Trieste (4): F Chiodo Grandi, A Bratina, N Carraro, M Gaio, A Granato, N Koscica, M Naccarato, V Sarra, P Schincariol, C Vilotti, Z Zugna. Clinica Dr Pederzoli Spa (4): D Idone, C Bonato, E De Angelis, A Forgiore, M Gambera, F Recchia, S Tamburini, P Tinazzi Martini, G Zanette. Ospedale Civile San Matteo Degli Infermi - Spoleto (2): S Grasselli. Ospedale Sannelli - Perugia (2): G Agnelli, A Andrea, A Billecia, V Caso, V Casso, R Fabiola, P Fanelli, M Paciaroni, B Sergio, M Venti. Mater Salutaris Hospital, Legnago VR (2): M Silvestri, L Altarini, A Bonfante, M Bonornetti, B Costa, N D'Attoma, N Deluca, F Frattini, R Niego, D Rafaele, V Ravenna, M Turazzini. Ospedale Guglielmo da Saliceto - Piacenza (1): S Cammarata. **Sweden** (297) Uppsala University Hospital (100): E Lundström, L Jonsson, U Söderström,

A Terént. Danderyd Hospital (46): V Murray, A Alvelius, M Arbin von, I Dalenbring, Å Doverhall, Å Franzén-Dahlin, N Greilert, M Hallberg, A Hejne von, E Isaksson, H Kumpulainen, A Laska, A Lundström, C Martin, J Muhrbeck, E Näslund, N Ringart, E Rooth, R Undén, P Waldenström. Hassleholm Hospital (29): M Esbjornsson, M Petranek. Karnsjukhuset (25): B Cederin, E Bertholds, A Elgåsen, T Johansson, B Witteborn. Koping Hospital (20): M Kwiatkowska, E Gustafsson, T Noren, J Saaf. Mora Hospital (17): J Teichert, M Bertilsson, S Nilsson, S Oestberg. Lidköping Hospital (11): L Welin, K Fredricson, L Pehn. Falu Hospital (11): J Hambræus, I Lonn. Capiro S:t Goran Hospital (9): B Hojeberg, A Adolfsson, M Anzen. Vastervik Hospital (5): T Wallen, R Schloenzig, P Söderström, A Wennerberg. University Hospital MAS (5): F Buchwald, K Abul-Kasim, A Berkeskold, J Petersson, E Poromaa. University Hospital of Northern Sweden (4): P Wester, R Backlund, A Sjöström. Helsingborgs lasarett (4): B Hedström, E Campbell, K Johnson, B Karlsson, N Lekokotla, C Lundahl, A Risedal, P Sandgren, A Svensson. Visby Hospital (4): S Bysell, E Smedberg, A Vestberg Bysell. Sundsvall Hospital (3): V Sjögren, B Högvall. University Hospital Lund (2): G Andberg, T Cronberg, A Lindgren. Vasteras Hospital (1): H Wannberg, F Ax, L Nyren. Karlstad Central Hospital (1): J Sanner, H Andersson, F Andler, S Holmgård, R Johansson, I Magnussan, K Nilsson, J Rådberg. **Norway** (204) Trondheim University Hospital (69): B Indredavik, H Ellekjær, A Østvik, G Rohweder, D Steckhan, J Storvold. Oslo University Hospital Sykehus (66): E Berge, Y Rønning, R Aakvik, K Bruins Slot, G Knutsen, M Moxness, R Pettersen, T Wyller. University Hospital of North Norway (23): C Wahl, O Iversen, S Johnsen, B Norderhus, L Steffensen, E Stensland. Kongsvinger Hospital (13): T Asak, J Aaseth, T Rotnes, J Sparby, S Wetterhus. Levanger Hospital (9): H Hallan, A Aardal, T Graven, H Hansbakk Skjetne, B Klykken, K Lindqvist, A Tommy. University Hospital of North Norway (8): T Engstad, M Antonsen, R Bajic, W Fønnebo, S Hykkerud, I Lyngmo, A Nyrnes, S Rogne, S Sparr. Harstad Hospital (7): O Kildahl-Andersen, K Pedersen, H Ulrichsen. Ålesund Hospital (4): O Skogen, I Alnes, R Hukari, Y Seljeseth, P Vadset. Asker and Bærum Hospital (2): G Knutsen, B Fure, H Ihle-Hansen, N Johnsen, L Kornberg. Namsos Hospital (2): S Schuler, M Heibert. Volda Hospital (1): M Lillebø, O Aasen, I Eskeland, T Hamre, S Hareide, H Helset, K Kolnes, B Lødemel, H Ose Velle, S Reite, E Velle. **Australia** (179) Nambour General Hospital (51): R Grimley, E Ahern, C Cocks, M Courtney, R Devin, J Endacott, C Fawcett, V Harrington, C Johnston, M Koltermann, S Murray, K Ng, G Styles, A Tampiyappa. John Hunter Hospital (29): C Levi, K Chung, L Dark, M Evans, Y Gawarikar, E Kerr, A Loisselle, F Miteff, A Moore, W O'Brien, M Parsons, D Quain, A Royan, M Russell, N Spratt. Gosford Hospital (24): J Sturm, D Crimmins, D Griffiths, P Kavelieros, J Kinsella, A Malhotra, B O'Brien, A Schutz, M Webb, S Whyte, V Zenteno. Westmead Hospital (16): R Lindley, A Bleasel, N Cordato, A Duggins, V Fung, L Gomes, N Ingham, J Ip, P Landau, J Morris, S Vucic. Royal Perth Hospital (15): G Hankey, A Claxton, N Lillywhite. The Canberra Hospital (12): C Lueck, C Andrews, G Danta, C Das, I Harvey, A Hughes, C McColl, A Oon, R Tuck. Royal Brisbane and Women's Hospital (10): S Read, M Badve, M Broad, G Cadigan, H Cavanagh, J Chalk, D Copsinis, K Etherington, R Henderson, R Hull, J O'Sullivan, J Pandian, L Ross-Lee, M Roxas, N Sheikh, G Skinner, A Wong. Austin Health - Repatriation Campus (8): H Dewey, A Brodtmann, G Donnan, A Hughes, M Karonen, H Ma, T Mulcahy, S Petrolo, L Walker, D Young, J Zavala. Nepean Hospital (7): M Thieben, C Harris, M Krause, S Lane, H Park, M Shaffi, J Wood. Box Hill Hospital (7): C Bladin, A Buckland, K Coughlan, B Coulton, A Gilligan, P Lee, S Mullen, Z Ross, P Sien Loh, C Szoeko. **Portugal** (82) UAVC. Centro Hospitalar de Trás-os-Montes e Alto Douro (42): M Silva, F Afonso, J Gabriel, P Guimarães, A Velon. Hospital Pero da Covilhã (19): M Castelo- Branco, F Alvarez, V Branco, C Coxo, P Goulao, D Leal, S Morgado, R Oliveira, F Paiva, A Rodrigues, M Simoes. Hospital de Santo António (12): G Lopes, T Almeida, M Cardoso, J Chaves, C Correia, M Correia, J Damásio, R Felgueiras, J Pereira, A Tuna. Hospital S.Marcos (9): C Ferreira, E Lourenco, A Machado, R Mare, J Rocha. **Belgium** (73) Cliniques Universitaires St Luc (73): A Peeters. **Austria** (46) Landeskrankenhaus Donauregion Tulln (34): K Matz, M Brainin, G Funk, V Reiner-Deitemyer. Krankenhaus Der Barmherzigen Bruder Wien (9): J Ferrari, A Flamm-Horak, G Gruber, R Rattinger. Krankenhaus Göttlicher Heiland (3): W Muellbacher, D Doppelbauer, R Kalchmayr, W Schima, T Wieser, M Zart. **Switzerland** (23) Universitätsspital Basel (22): P Lyrer, L Bonati, S Engelter, F Fluri, S Muller, E Radue, A Tiemessen, L Walz, F Weisskopf, S Wetzler. Universitätsspital Zürich (1): A Luft, D Fetz, B Hertler, A Pangalu. **Canada** (8) QEII Health Sciences Centre (8): G Gubitz, P Boulton, J Jarrett, J Moeller, S Phillips. **Mexico** (3) Instituto Nacional de Neurologia y Neurocirugia MVS (3): A Arauz, L Bermudez, J Calleja, R Garcia.

