

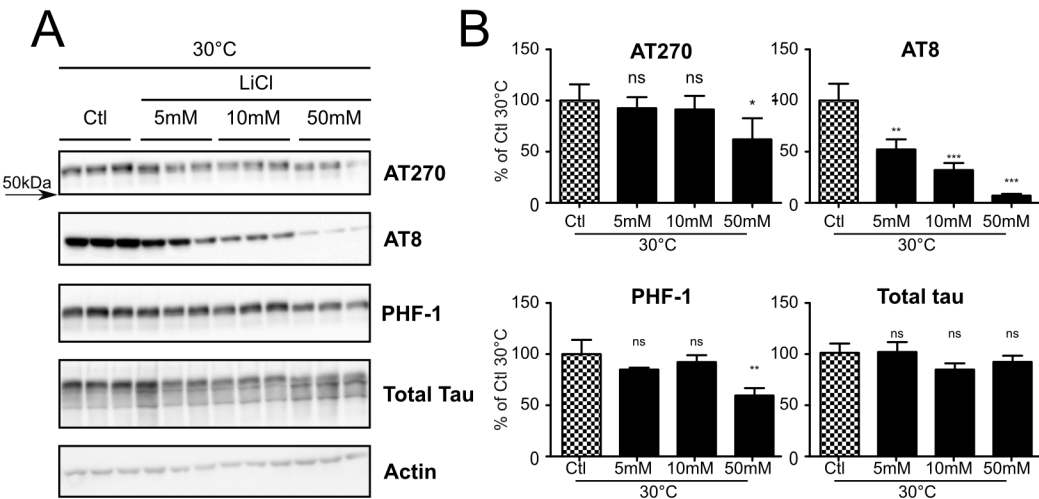
**Hypothermia-induced hyperphosphorylation: a new model to study tau kinase inhibitors**

Alexis Bretteville<sup>1,2</sup>, François Marcouiller<sup>1,2</sup>, Carl Julien<sup>1,2</sup>, Noura El-Khoury<sup>1,2</sup>, Franck R Petry<sup>1,2</sup>,  
Isabelle Poitras<sup>1,2</sup>, Didier Mouginot<sup>1,2</sup>, Georges Lévesque<sup>1,2</sup>, Sébastien S. Hébert<sup>1,2</sup> and Emmanuel  
Planel<sup>1,2\*</sup>.

<sup>1</sup> Université Laval, Faculté de médecine, Département de neurosciences et psychiatrie

<sup>2</sup> Centre de Recherche du Centre Hospitalier Universitaire de Québec, Axe Neurosciences

# Figure S1



**Figure S1: LiCl treatment dose establishment in SH-SY5Y 3R tau cells. SH-SY5Y 3R tau cells were subjected to indicated LiCl dose in hypothermic conditions for 2 hours. A. Immunoblots of SH-SY5Y 3R tau cell protein homogenates using antibodies directed against major tau phosphorylation epitopes. Total tau levels were probed using a pan tau antibody. B. Immunoblot quantifications. Ratios of phosphorylation epitopes levels over total protein levels  $\pm$ SD are represented as a percentage of hypothermic non-treated condition Ctl 30°C (Checkboard bar). N=3 per condition.**