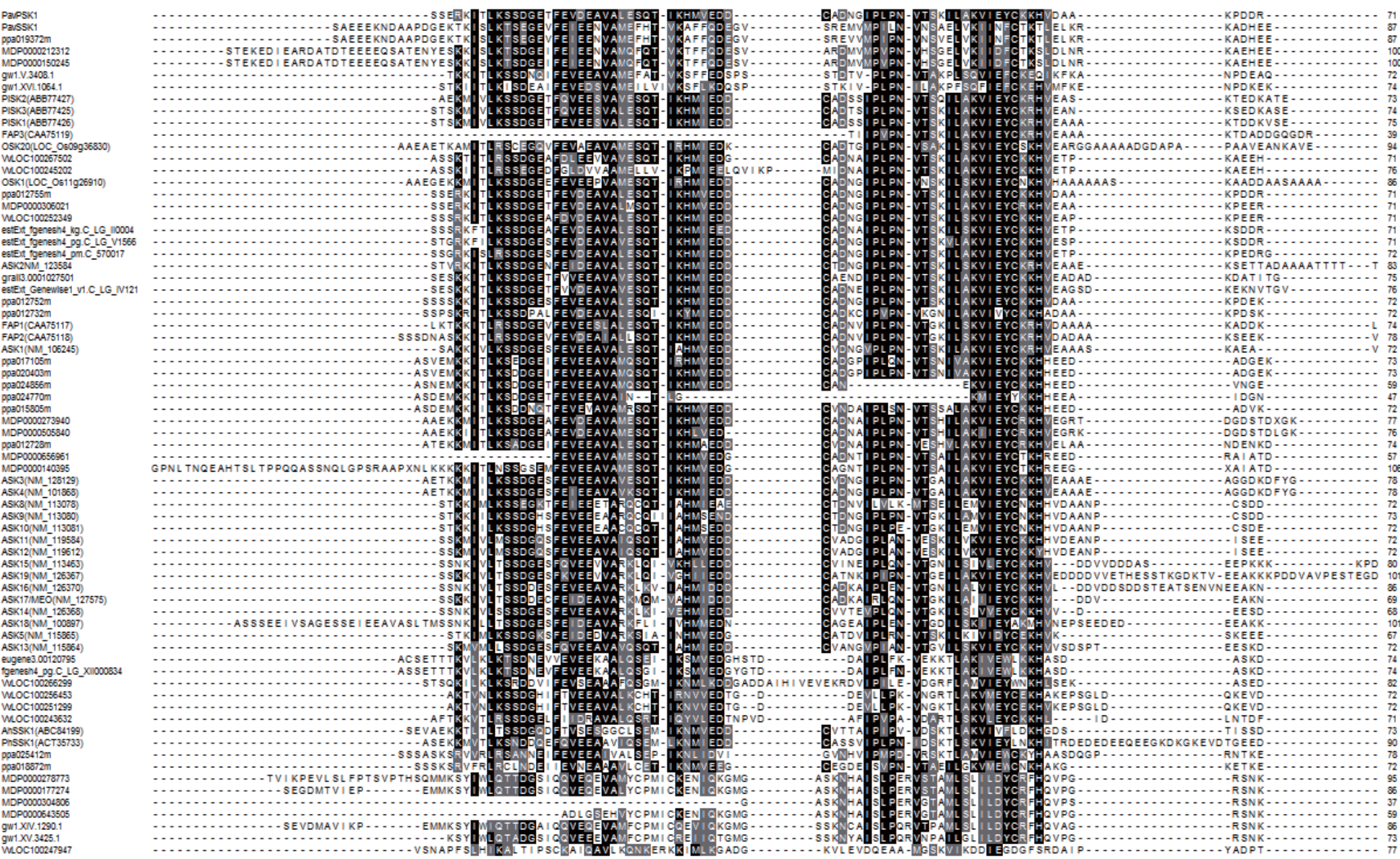


# Supplementary Figure S1 (1)

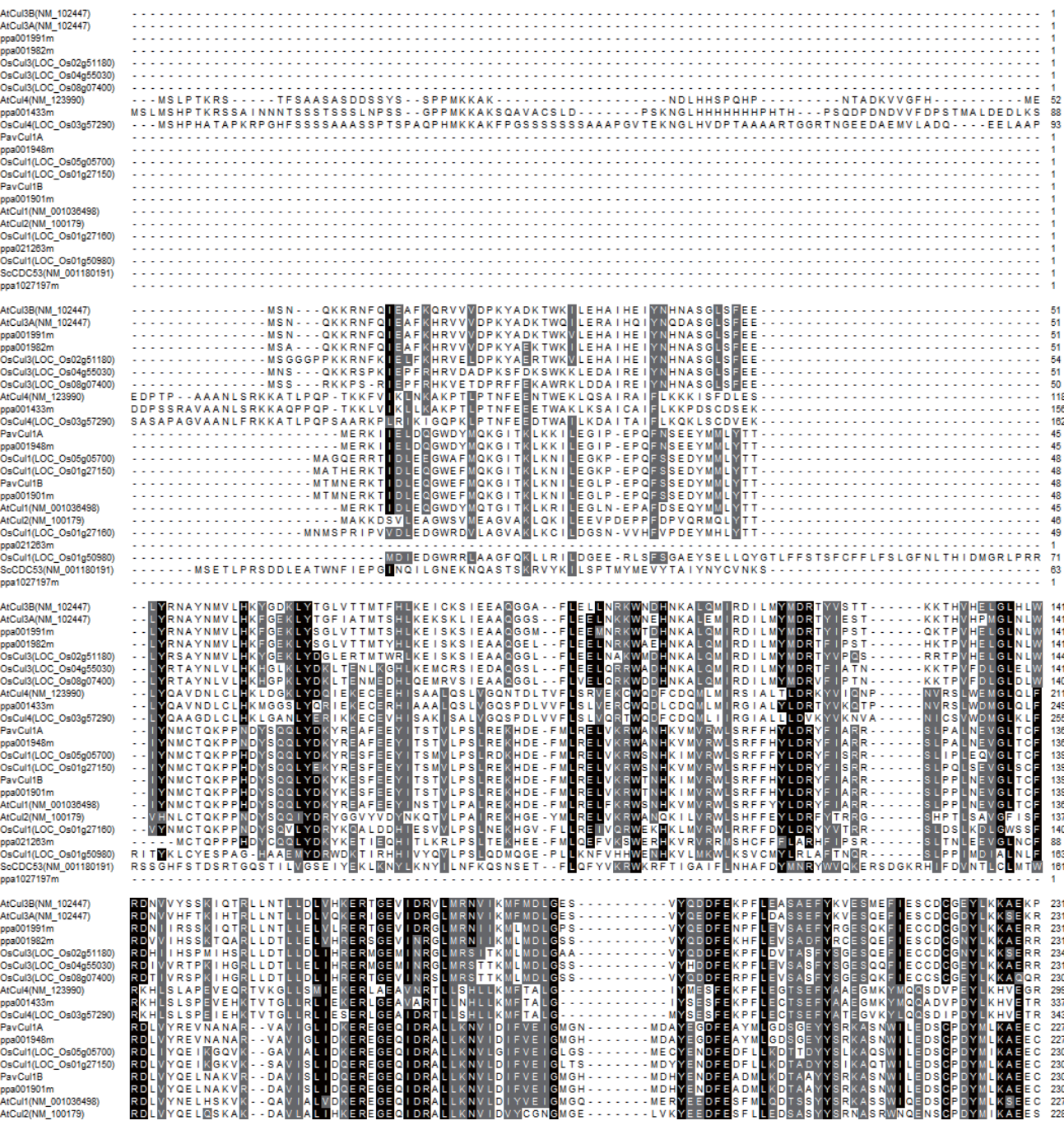


Supplementary Figure S1: Alignment of PavSSK1 and other plant Skp1-like proteins.

# Supplementary Figure S1 (2)

PavPSK1	---	PSNDE	DLKAWD	TFD	FDV	---	IQA	TLFD	LLAANYLN	IKS	LLDL	TCCQ	TV	---	ADM	IKGKT	PEEIR	TFNI	KNOFT	PEEE	---	EVRREN	QWAFE	---	155								
PavSK1	---	NAKKE	RLRF	FYK	DFVK	---	DETEH	WELI	LAADYLH	VDQL	LEVL	NQCV	---	---	ADR	IKKSV	VEYR	KFG	ENDFT	PEEE	---	KLRBEY	AWAFE	GVDEE	---	176							
ppa019372m	---	NAKKE	RLRF	FYK	DFVK	---	DETEH	WELI	LAADYLH	VDQL	LEVL	NQCV	---	---	ADR	IKKSV	VEYR	KFG	ENDFT	PEEE	---	KLRBEY	AWAFE	GVDEE	---	176							
MDP0000212312	---	VSKKE	RLRF	FYK	DFVK	---	DETTGN	WELT	LAADYLN	VDQL	LEVL	NQCV	---	---	ADR	IKKSV	VEYR	KFG	ENDFT	PEEE	---	KLRDQY	AWAFE	GVDEE	---	189							
MDP0000150245	---	VSKKE	RLRF	FYK	DFVK	---	DETTGN	WELT	LAADYLN	VDQL	LEVL	NQCV	---	---	ADR	IKKSV	VEYR	KFG	ENDFT	PEEE	---	KLRDQY	AWAFE	GVDEE	---	189							
gw1.V.3408.1	---	KKK	---	HS	EF	FLK	---	EKS	DKD	LVDM	PV	ANYL	EIK	LDL	NL	NAV	---	ADR	IKKSV	VEYR	SG	FN	KNOFT	AEEA	---	151							
gw1.XV1.1064.1	---	QKK	---	I	SE	FLK	---	EKS	NEE	LD	M	V	AKYL	EAE	D	LDL	SQA	---	ADR	IKKSV	VEYR	SG	FN	KNOFT	PEEEA	---	153						
PISK2(AB877427)	---	DELKS	FD	AD	FVK	---	VD	S	M	FD	LL	LAANYLN	IKS	LLDL	TCCQ	TV	---	ADM	IKGKT	PEEIR	TFNI	KNOFT	PEEE	---	EVRREN	QWAFE	---	153					
PISK3(AB877426)	---	DELKS	FD	AD	FVK	---	VD	Q	G	TL	FD	LL	LAANYLN	IKS	LLDL	TCCQ	TV	---	ADM	IKGKT	PEEIR	TFNI	KNOFT	PEEE	---	EVRREN	QWAFE	---	154				
PISK1(AB877426)	---	ED	LK	FD	AD	FVK	---	VD	Q	G	TL	FD	LL	LAANYLN	IKS	LLDL	TCCQ	TV	---	ADM	IKGKT	PEEIR	TFNI	KNOFT	PEEE	---	EVRREN	QWAFE	---	155			
FAP3(CAA75119)	---	DA	LK	FD	AD	FVK	---	VD	Q	G	TL	FD	LL	LAANYLN	IKS	LLDL	TCCQ	TV	---	ADM	IKGKT	PEEIR	TFNI	KNOFT	PEEE	---	EVRREN	QWAFE	---	119			
OSK20(LOC_Os09g36830)	---	DEL	K	FD	AD	FVK	---	VD	Q	G	TL	FD	LL	LAANYLN	IKS	LLDL	TCCQ	TV	---	ADM	IKGKT	PEEIR	TFNI	KNOFT	PEEE	---	EVRREN	QWAFE	---	174			
VL0C100267502	---	A	VN	DE	LK	AWD	AD	FVK	---	VD	Q	A	TL	FD	LL	LAANYLN	IKS	LLDL	TCCQ	TV	---	ADM	IKGKT	PEEIR	TFNI	KNOFT	PEEE	---	154				
VL0C100245202	---	A	VN	DE	LK	AWD	AD	FVK	---	VD	Q	A	TL	FD	LL	LAANYLN	IKS	LLDL	TCCQ	TV	---	ADM	IKGKT	PEEIR	TFNI	KNOFT	PEEE	---	159				
OSK1(LOC_Os11g26910)	---	V	P	P	S	G	E	L	K	W	D	A	AD	FVK	---	VD	Q	A	TL	FD	LL	LAANYLN	IKS	LLDL	TCCQ	TV	---	EVRREN	QWAFE	---	172		
ppa012755m	---	PSNDE	DLKAWD	TFD	FDV	---	IQA	TLFD	LLAANYLN	IKS	LLDL	TCCQ	TV	---	ADM	IKGKT	PEEIR	TFNI	KNOFT	PEEE	---	EVRREN	QWAFE	---	155								
MDP0000306021	---	ASVDE	DLKAWD	TFD	FDV	---	VD	Q	A	TL	FD	LL	LAANYLN	IKS	LLDL	TCCQ	TV	---	ADM	IKGKT	PEEIR	TFNI	KNOFT	PEEE	---	EVRREN	QWAFE	---	155				
VL0C100252349	---	SGVDE	DLKAWD	TFD	FDV	---	VD	Q	A	TL	FD	LL	LAANYLN	IKS	LLDL	TCCQ	TV	---	ADM	IKGKT	PEEIR	TFNI	KNOFT	PEEE	---	EVRREN	QWAFE	---	155				
esiEht_fgenseh4_hg_C_LG_10004	---	PSS	A	D	D	L	K	W	D	A	AD	FVK	---	VD	Q	A	TL	FD	LL	LAANYLN	IKS	LLDL	TCCQ	TV	---	EVRREN	QWAFE	---	156				
esiEht_fgenseh4_pg_C_LG_V1566	---	PSS	A	D	D	L	K	W	D	A	AD	FVK	---	VD	Q	A	TL	FD	LL	LAANYLN	IKS	LLDL	TCCQ	TV	---	EVRREN	QWAFE	---	156				
esiEht_fgenseh4_pm_C_570017	---	T	N	S	G	D	D	L	K	W	D	A	AD	FVK	---	VD	Q	A	TL	FD	LL	LAANYLN	IKS	LLDL	TCCQ	TV	---	EVRREN	QWAFE	---	157		
ASK2NM_123584	---	V	A	S	G	S	D	D	L	K	W	D	A	AD	FVK	---	VD	Q	A	TL	FD	LL	LAANYLN	IKS	LLDL	TCCQ	TV	---	EVRREN	QWAFE	---	170	
grall3.0001027501	---	K	D	E	F	M	S	W	D	A	AD	FVK	---	VD	Q	A	TL	FD	LL	LAANYLN	IKS	LLDL	TCCQ	TV	---	EVRREN	QWAFE	---	157				
esiEht_Genewise1_v1_C_LG_IV121	---	A	E	K	D	E	S	L	K	W	D	A	AD	FVK	---	VD	Q	A	TL	FD	LL	LAANYLN	IKS	LLDL	TCCQ	TV	---	EVRREN	QWAFE	---	160		
ppa012752m	---	I	S	E	D	L	K	W	D	A	AD	FVK	---	VD	Q	A	TL	FD	LL	LAANYLN	IKS	LLDL	TCCQ	TV	---	EVRREN	QWAFE	---	155				
ppa012732m	---	I	T	E	D	L	K	W	D	A	AD	FVK	---	VD	Q	A	TL	FD	LL	LAANYLN	IKS	LLDL	TCCQ	TV	---	EVRREN	QWAFE	---	156				
FAP1(CAA75117)	---	A	S	T	G	T	S	D	D	L	K	W	D	A	AD	FVK	---	VD	Q	A	TL	FD	LL	LAANYLN	IKS	LLDL	TCCQ	TV	---	EVRREN	QWAFE	---	161
FAP2(CAA75118)	---	A	A	A	A	G	D	D	L	K	W	D	A	AD	FVK	---	VD	Q	A	TL	FD	LL	LAANYLN	IKS	LLDL	TCCQ	TV	---	EVRREN	QWAFE	---	165	
ASK1(NM_106245)	---	E	G	A	A	T	S	D	D	L	K	W	D	A	AD	FVK	---	VD	Q	A	TL	FD	LL	LAANYLN	IKS	LLDL	TCCQ	TV	---	EVRREN	QWAFE	---	159
ppa017105m	---	N	K	E	D	L	K	W	D	A	AD	FVK	---	VD	Q	A	TL	FD	LL	LAANYLN	IKS	LLDL	TCCQ	TV	---	EVRREN	QWAFE	---	155				
ppa020403m	---	N	K	E	D	L	K	W	D	A	AD	FVK	---	VD	Q	A	TL	FD	LL	LAANYLN	IKS	LLDL	TCCQ	TV	---	EVRREN	QWAFE	---	155				
ppa024856m	---	N	K	V	D	L	K	W	D	A	AD	FVK	---	VD	Q	A	TL	FD	LL	LAANYLN	IKS	LLDL	TCCQ	TV	---	EVRREN	QWAFE	---	140				
ppa024770m	---	N	K	V	D	L	K	W	D	A	AD	FVK	---	VD	Q	A	TL	FD	LL	LAANYLN	IKS	LLDL	TCCQ	TV	---	EVRREN	QWAFE	---	140				
ppa015805m	---	N	K	E	S	L	K	W	D	A	AD	FVK	---	VD	Q	A	TL	FD	LL	LAANYLN	IKS	LLDL	TCCQ	TV	---	EVRREN	QWAFE	---	122				
MDP0000273940	---	I	G	D	E	X	T	L	K	W	D	A	AD	FVK	---	VD	Q	A	TL	FD	LL	LAANYLN	IKS	LLDL	TCCQ	TV	---	EVRREN	QWAFE	---	164		
MDP0000505840	---	S	G	D	E	X	T	L	K	W	D	A	AD	FVK	---	VD	Q	A	TL	FD	LL	LAANYLN	IKS	LLDL	TCCQ	TV	---	EVRREN	QWAFE	---	162		
ppa012729m	---	T	K	E	F	M	S	W	D	A	AD	FVK	---	VD	Q	A	TL	FD	LL	LAANYLN	IKS	LLDL	TCCQ	TV	---	EVRREN	QWAFE	---	156				
MDP0000656961	---	N	E	N	N	F	K	W	D	A	AD	FVK	---	VD	Q	A	TL	FD	LL	LAANYLN	IKS	LLDL	TCCQ	TV	---	EVRREN	QWAFE	---	134				
MDP0000140395	---	X	E	N	N	F	K	W	D	A	AD	FVK	---	VD	Q	A	TL	FD	LL	LAANYLN	IKS	LLDL	TCCQ	TV	---	EVRREN	QWAFE	---	134				
ASK3(NM_128129)	---	S	T	E	N	H	E	L	K	W	D	A	AD	FVK	---	VD	Q	A	TL	FD	LL	LAANYLN	IKS	LLDL	TCCQ	TV	---	EVRREN	QWAFE	---	162		
ASK4(NM_101868)	---	S	A	E	N	D	L	K	W	D	A	AD	FVK	---	VD	Q	A	TL	FD	LL	LAANYLN	IKS	LLDL	TCCQ	TV	---	EVRREN	QWAFE	---	162			
ASK8(NM_113078)	---	D	L	K	W	D	A	AD	FVK	---	VD	Q	A	TL	FD	LL	LAANYLN	IKS	LLDL	TCCQ	TV	---	EVRREN	QWAFE	---	151							
ASK9(NM_113080)	---	D	L	K	W	D	A	AD	FVK	---	VD	Q	A	TL	FD	LL	LAANYLN	IKS	LLDL	TCCQ	TV	---	EVRREN	QWAFE	---	152							
ASK10(NM_113081)	---	D	L	K	W	D	A	AD	FVK	---	VD	Q	A	TL	FD	LL	LAANYLN	IKS	LLDL	TCCQ	TV	---	EVRREN	QWAFE	---	151							
ASK11(NM_119584)	---	D	L	N	W	D	A	AD	FVK	---	VD	Q	A	TL	FD	LL	LAANYLN	IKS	LLDL	TCCQ	TV	---	EVRREN	QWAFE	---	151							
ASK12(NM_119612)	---	D	L	N	W	D	A	AD	FVK	---	VD	Q	A	TL	FD	LL	LAANYLN	IKS	LLDL	TCCQ	TV	---	EVRREN	QWAFE	---	151							
ASK15(NM_113463)	DEA	---	Q	N	D	A	W	D	A	AD	FVK	---	VD	Q	A	TL	FD	LL	LAANYLN	IKS	LLDL	TCCQ	TV	---	EVRREN	QWAFE	ADTKHEDPKP	---	176				
ASK19(NM_126367)	DEA	E	D	K	K	E	L	N	W	D	A	AD	FVK	---	VD	Q	A	TL	FD	LL	LAANYLN	IKS	LLDL	TCCQ	TV	---	EVRREN	QWAFE	QDQKQVQPKP	---	199		
ASK16(NM_126370)	---	E	F	T	W	D	A	AD	FVK	---	VD	Q	A	TL	FD	LL	LAANYLN	IKS	LLDL	TCCQ	TV	---	EVRREN	QWAFE	DLK	---	169						
ASK17/MEO(NM_127575)	---	E	F	T	W	D	A	AD	FVK	---	VD	Q	A	TL	FD	LL	LAANYLN	IKS	LLDL	TCCQ	TV	---	EVRREN	QWAFE	---	149							
ASK14(NM_126366)	---	E	F	T	W	D	A	AD	FVK	---	VD	Q	A	TL	FD	LL	LAANYLN	IKS	LLDL	TCCQ	TV	---	EVRREN	QWAFE	---	148							
ASK18(NM_100897)	---	N	D	S	W	A	K	E	F	M	S	W	D	A	AD	FVK	---	VD	Q	A	TL	FD	LL	LAANYLN	IKS	LLDL	TCCQ	TV	---	EVRREN	QWAFE	---	182
ASK5(NM_115865)	---	D	L	K	W	D	A	AD	FVK	---	VD	Q	A	TL	FD	LL	LAANYLN	IKS	LLDL	TCCQ	TV	---	EVRREN	QWAFE	---	152							
ASK13(NM_115864)	---	E	L	K	W	D	A	AD	FVK	---	VD	Q	A	TL	FD	LL	LAANYLN	IKS	LLDL	TCCQ	TV	---	EVRREN	QWAFE	---	153							
eugenes3.00120795	---	E	L	K	W	D	A	AD	FVK	---	VD	Q	A	TL	FD	LL	LAANYLN	IKS	LLDL	TCCQ	TV	---	EVRREN	QWAFE	---	153							
fgenseh4_pg_C_LG_XII000834	---	E	L	K	W	D	A	AD	FVK	---	VD	Q	A	TL	FD	LL	LAANYLN	IKS	LLDL	TCCQ	TV	---	EVRREN	QWAFE	---	154							
VL0C100266299	---	E	M	K	W	D	A	AD	FVK	---	VD	Q	A	TL	FD	LL	LAANYLN	IKS	LLDL	TCCQ	TV	---	EVRREN	QWAFE	---	161							
VL0C100256453	---	E	M	K	W	D	A	AD	FVK	---	VD	Q	A	TL	FD	LL	LAANYLN	IKS	LLDL	TCCQ	TV	---	EVRREN	QWAFE	---	151							
VL0C100251299	---	E	M	K	W	D	A	AD	FVK	---	VD	Q	A	TL	FD	LL	LAANYLN	IKS	LLDL	TCCQ	TV	---	EVRREN	QWAFE	---	151							
VL0C100243632	---	D	Y	S	E	L	K	W	D	A	AD	FVK	---	VD	Q	A	TL	FD	LL	LAANYLN	IKS	LLDL	TCCQ	TV	---	EVRREN	QWAFE	---	150				
AHSSK1(ABC84199)	---	D	M	K	K	F	D	E	Y	V	T	G	---	VD	Q	A	TL	FD	LL	LAANYLN	IKS	LLDL	TCCQ	TV	---	EVRREN	QWAFE	GLDPPDS	---	160			
PHSSK1(ACT35733)	---	D	L	K	E	F	D	E	Y	V	T	G	---	VD	Q	A	TL	FD	LL	LAANYLN	IKS	LLDL	TCCQ	TV	---	EVRREN	QWAFE	---	178				
ppa025412m	---	L	I	K	E	W	E	E	L	D	C	---	VD	Q	A	TL	FD	LL	LAANYLN	IKS	LLDL	TCCQ	TV	---	EVRREN	QWAFE	SGPEIDDTVN	---	140				
ppa018872m	---	E	L	K	W	D	A	AD	FVK	---	VD	Q	A	TL	FD	LL	LAANYLN																

# Supplementary Figure S2



Supplementary Figure S2: Alignment of *Prunus* Cullin-likes and other plant Cullin-likes.