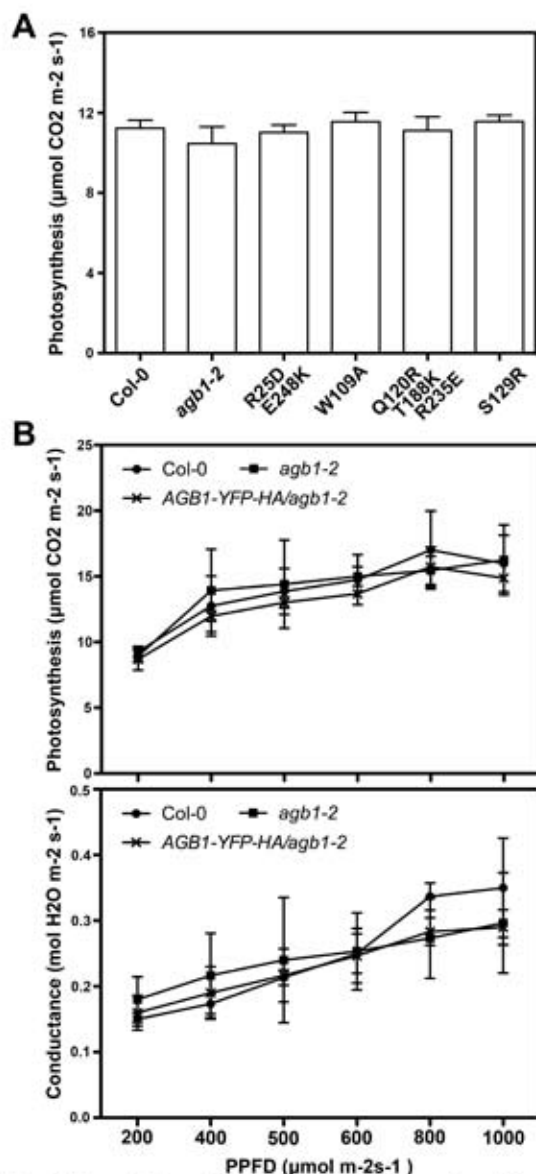


**Figure S4****Figure S4. Gas exchange analysis of WT, *agb1-2*, and the transgenic plants under different light intensities.**

**A**, Photosynthesis obtained at PPFD = 500  $\mu\text{mol m}^{-2} \text{ s}^{-1}$ . Seven plants per genotype were measured in each experiment and data are from one of two independent experiments with same conclusion. No statistically significant difference was found among different genotypes ( $p > 0.05$ ; one-way ANOVA). **B**, Photosynthesis (upper panel) and stomatal conductance (bottom panel) obtained along a stepwise increase of PPFD. Plants were grown at a constant PPFD (400  $\mu\text{mol m}^{-2} \text{ s}^{-1}$ ) before use. Leaves were illuminated with target PPFD values for 5 minutes before each measurement. Three plants per genotype were measured in each experiment. The error bars represent SD. No statistically significant difference was found among different genotypes ( $p > 0.05$ ; two-way ANOVA).