

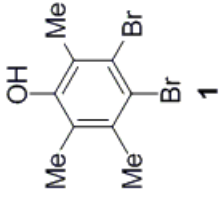
Me₃(OMe)*t*BuXPhos: A Surrogate Ligand for Me₄*t*BuXPhos in Palladium-Catalyzed C–N and C–O Bond-Forming Reactions

Satoshi Ueda, Siraj Ali, Brett P. Fors and Stephen L. Buchwald*

Department of Chemistry, Massachusetts Institute of Technology,
77 Massachusetts Avenue, Cambridge, Massachusetts 02139

Supporting Information

NMR Spectra: S2-S26



2.431
2.402
2.186

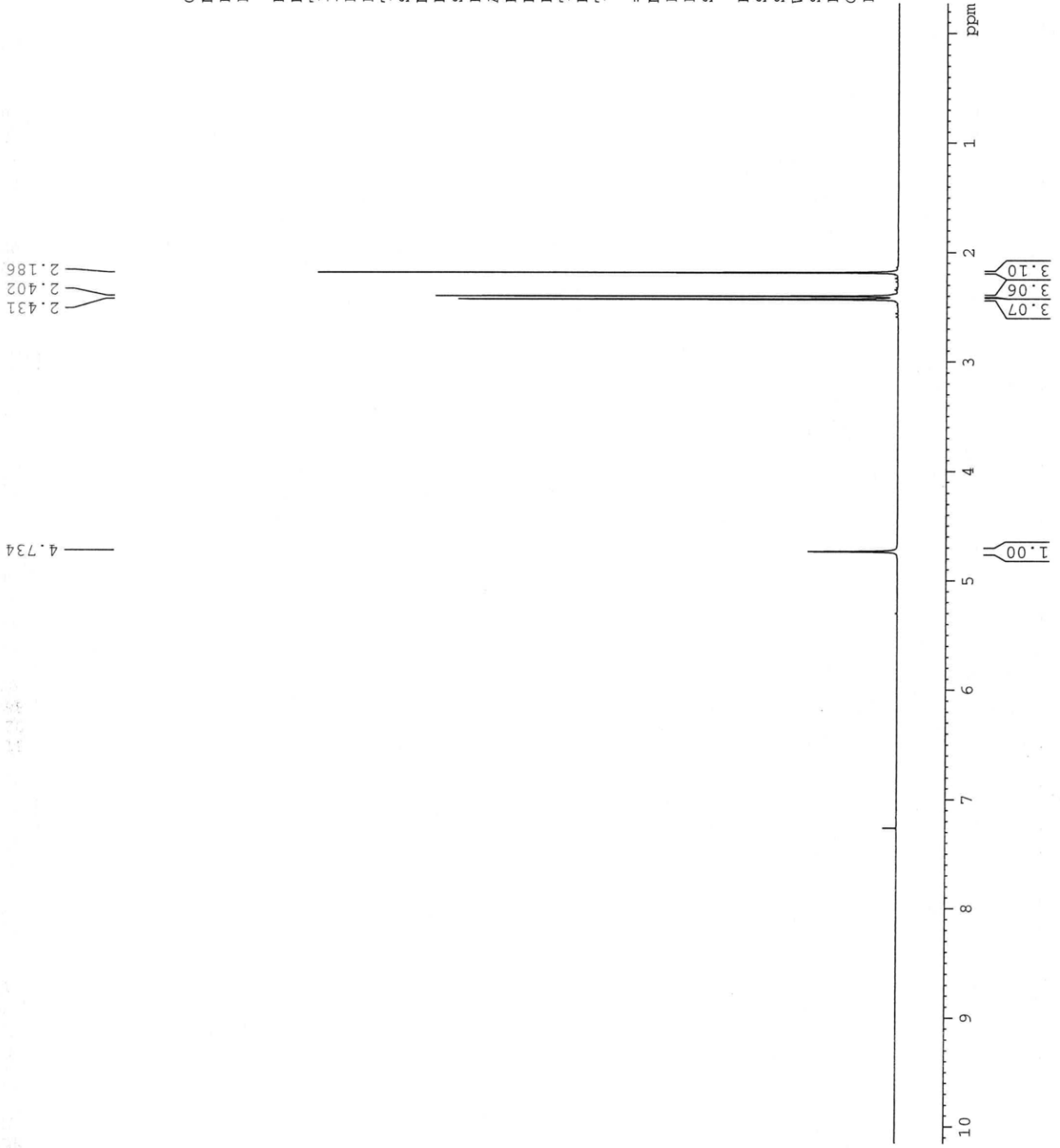
4.734

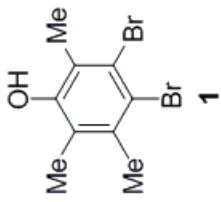
Current Data Parameters
 NAME SU2-78
 EXPNO 1
 PROCNO 1

F2 - Acquisition Parameters
 Date_ 20110502
 Time 9.18
 INSTRUM spect
 PROBHD 5 mm QNP 1H/13
 PULPROG zg30
 TD 65536
 SOLVENT CDC13
 NS 8
 DS 2
 SWH 8278.146 Hz
 FIDRES 0.126314 Hz
 AQ 3.9584243 sec
 RG 256
 DW 60.400 usec
 DE 6.00 usec
 TE 683.2 K
 D1 1.00000000 sec
 TD0 1

==== CHANNEL f1 =====
 NUC1 1H
 P1 14.00 usec
 PL1 0.00 dB
 SF01 400.1324710 MHz

F2 - Processing parameters
 SI 65536
 SF 400.1300097 MHz
 WDW no
 SSB 0
 LB 0.00 Hz
 GB 0
 PC 1.00





Current Data Parameters
 NAME SU2-78C
 EXPNO 1
 PROCNO 1

F2 - Acquisition Parameters

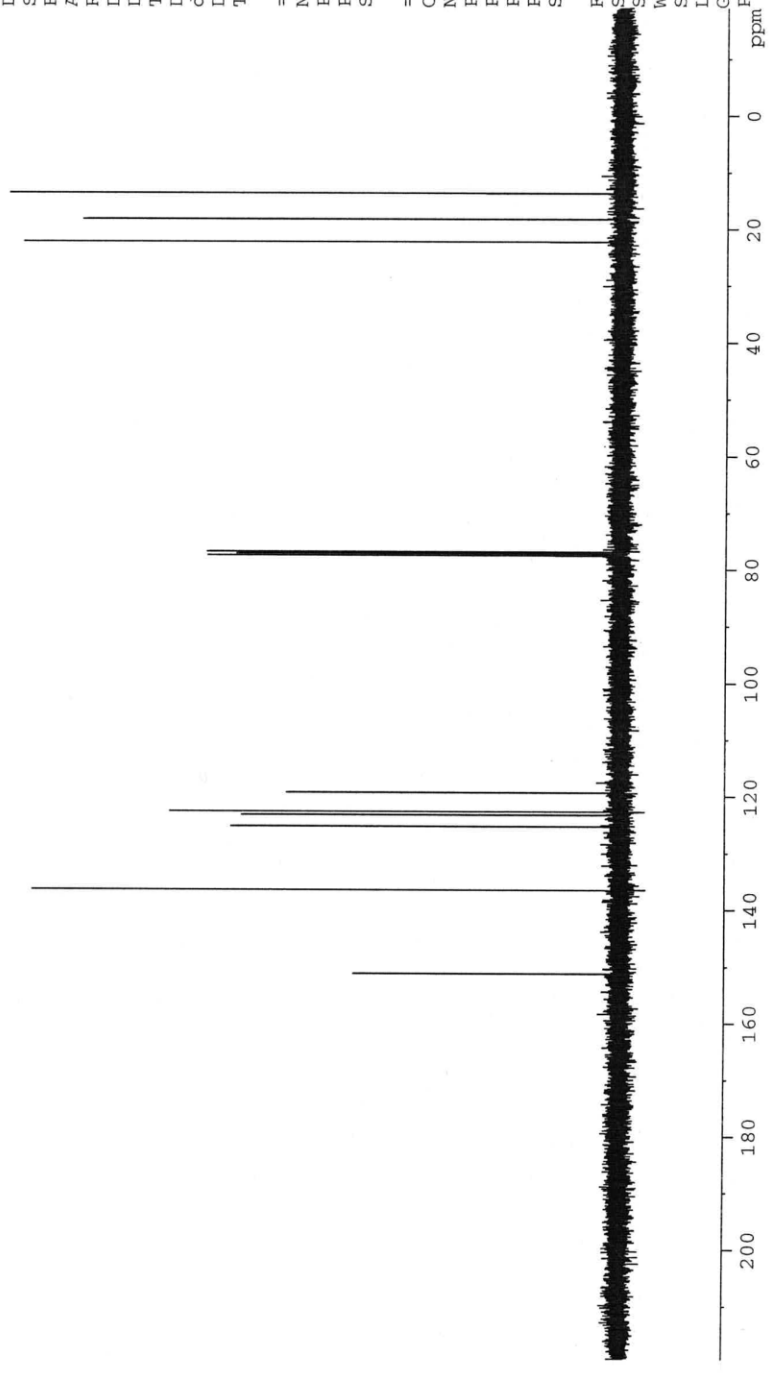
Date_ 20110502
 Time 9.27
 INSTRUM spect
 PROBHD 5 mm QNP 1H/13
 PULPROG zgpg30
 TD 65536
 SOLVENT CDCl3
 NS 128
 DS 4
 SWH 23980.814 Hz
 FIDRES 0.365918 Hz
 AQ 1.3664756 sec
 RG 2298.8
 DW 20.850 usec
 DE 6.00 usec
 TE 683.2 K
 D1 2.0000000 sec
 d11 0.0300000 sec
 DELTA 1.8999998 sec
 TD0 1

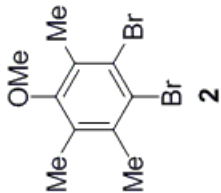
==== CHANNEL f1 =====
 NUC1 13C
 P1 9.38 usec
 PL1 0.00 dB
 SFO1 100.6228298 MHz

==== CHANNEL f2 =====
 CPDPRG2 waltz16
 NUC2 1H
 PCPD2 90.00 usec
 PL2 0.00 dB
 PL12 16.10 dB
 PL13 19.00 dB
 SFO2 400.1316005 MHz

F2 - Processing parameters
 SI 32768
 SF 100.6127544 MHz
 WDW no
 SSB 0
 LB 0.00 Hz
 GB 0
 PC 1.40

151.23
 136.50
 125.29
 123.31
 122.71
 119.38
 22.27
 18.25
 13.66





Current Data Parameters
 NAME SU2-79
 EXPNO 1
 PROCNO 1

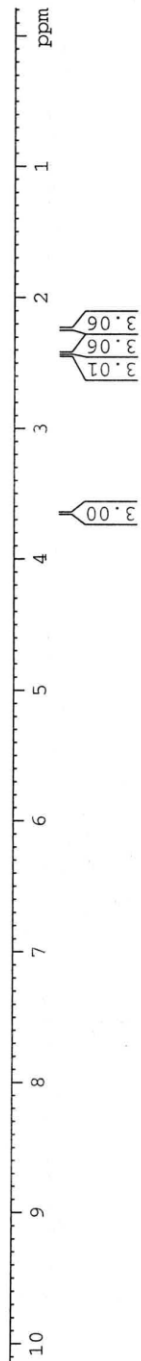
F2 - Acquisition Parameters

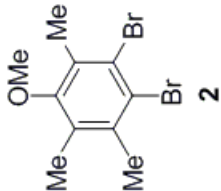
Date_ 20110503
 Time 9.22
 INSTRUM spect
 PROBHD 5 mm QNP 1H/13
 PULPROG zg30
 TD 65536
 SOLVENT CDCl3
 NS 8
 DS 2
 SWH 8278.146 Hz
 FIDRES 0.126314 Hz
 AQ 3.9584243 sec
 RG 322.5
 DW 60.400 usec
 DE 6.00 usec
 TE 683.2 K
 D1 1.0000000 sec
 TDO 1

==== CHANNEL f1 =====
 NUC1 1H
 P1 14.00 usec
 PL1 0.00 dB
 SFO1 400.1324710 MHz

F2 - Processing parameters
 SI 65536
 SF 400.1300096 MHz
 WDW no
 SSB 0
 LB 0.00 Hz
 GB 0
 PC 1.00

3.652
 2.440
 2.424
 2.239





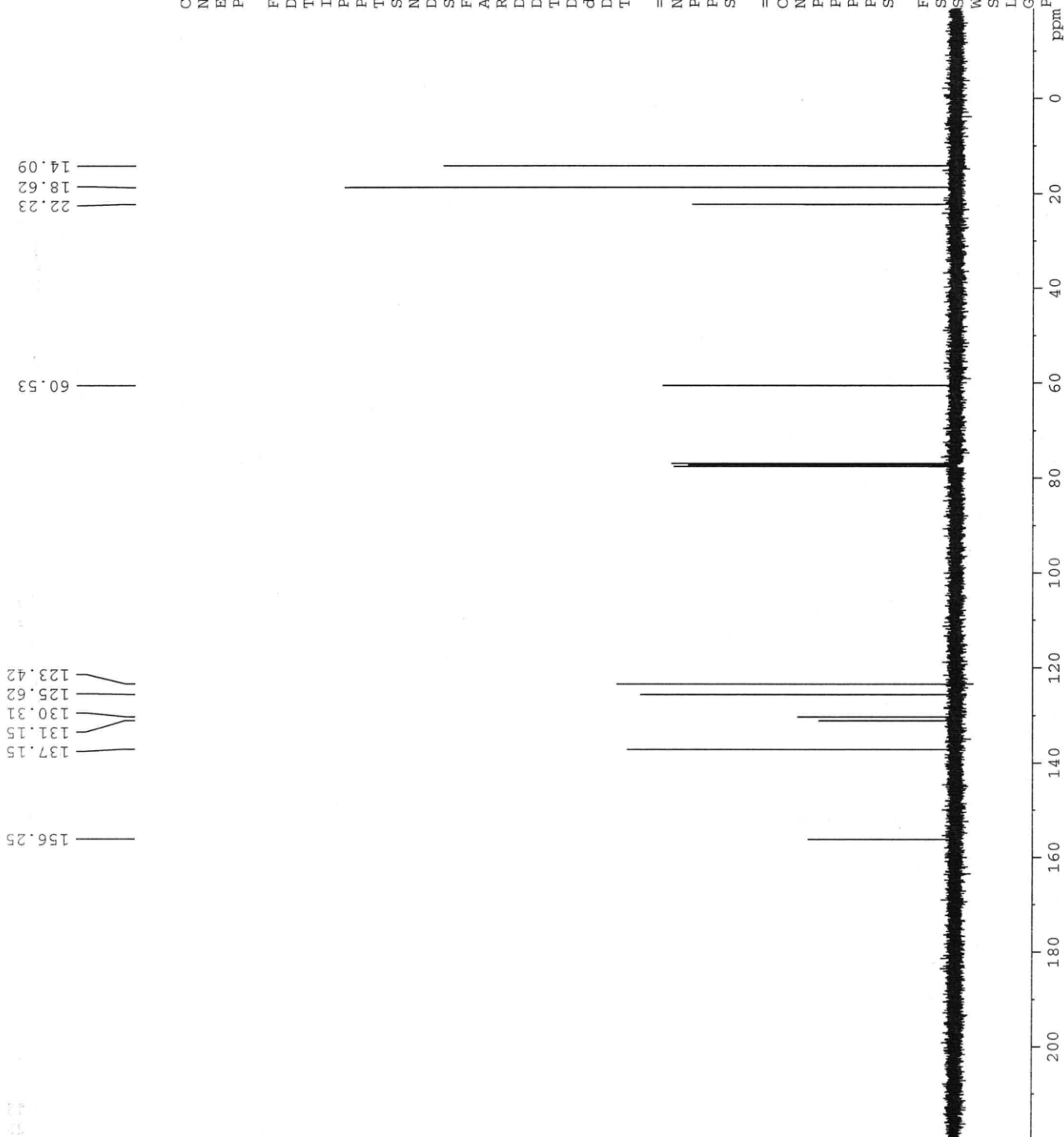
Current Data Parameters
 NAME SU2-79C
 EXPNO 1
 PROCNO 1

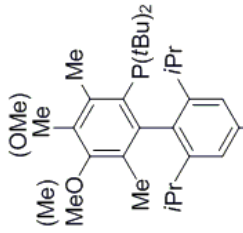
F2 - Acquisition Parameters
 Date_ 20110503
 Time 9.30
 INSTRUM spect
 PROBHD 5 mm QNP 1H/13
 PULPROG zgpg30
 TD 65536
 SOLVENT CDCl3
 NS 128
 DS 4
 SWH 23980.814 Hz
 FIDRES 0.365918 Hz
 AQ 1.36664756 sec
 RG 2580.3
 DW 20.850 usec
 DE 6.00 usec
 TE 683.2 K
 D1 2.00000000 sec
 d11 0.03000000 sec
 DELTA 1.89999998 sec
 TD0 1

==== CHANNEL f1 =====
 NUC1 13C
 P1 9.38 usec
 PL1 0.00 dB
 SFO1 100.6228298 MHz

==== CHANNEL f2 =====
 CPDPRG2 waltz16
 NUC2 1H
 PCPD2 90.00 usec
 PL2 0.00 dB
 PL12 16.10 dB
 PL13 19.00 dB
 SFO2 400.1316005 MHz

F2 - Processing parameters
 SI 32768
 SF 100.6127533 MHz
 WDW no
 SSB 0
 LB 0.00 Hz
 GB 0
 PC 1.40





L3 *iPr*

Current Data Parameters
 NAME SU1-275
 EXPNO 1
 PROCNO 1

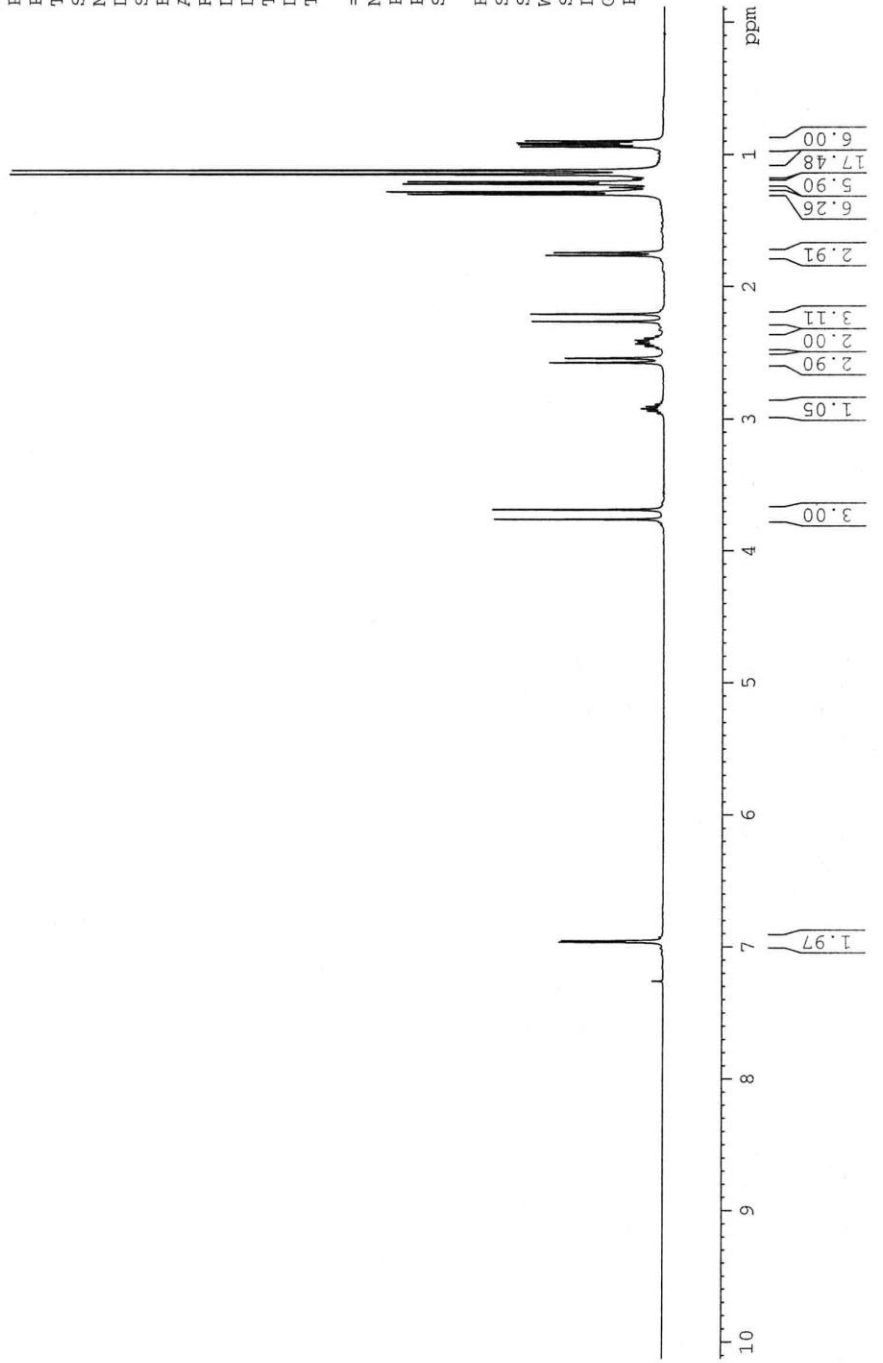
F2 - Acquisition Parameters
 Date_ 20110218
 Time 9.09
 INSTRUM spect
 PROBHD 5 mm QNP 1H/13
 PULPROG zg30
 TD 65536
 SOLVENT CDCl3
 NS 16
 DS 2
 SWH 8278.146 Hz
 FIDRES 0.126314 Hz
 AQ 3.9584243 sec
 RG 32
 DW 60.400 usec
 DE 6.00 usec
 TE 294.2 K
 D1 1.00000000 sec
 TD0 1

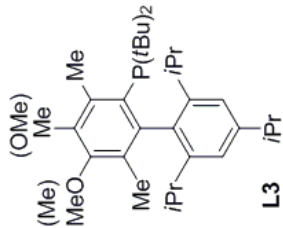
==== CHANNEL f1 =====
 NUC1 1H
 P1 14.00 usec
 PL1 0.00 dB
 SFO1 400.1324710 MHz

F2 - Processing parameters
 SI 65536
 SF 400.1300097 MHz
 WDW no
 SSB 0
 LB 0.00 Hz
 GB 0
 PC 1.00

3.761
 3.687
 2.975
 2.958
 2.941
 2.924
 2.907
 2.889
 2.871
 2.577
 2.544
 2.470
 2.453
 2.437
 2.425
 2.420
 2.408
 2.392
 2.375
 2.266
 2.209
 1.766
 1.744
 1.301
 1.283
 1.224
 1.208
 1.152
 1.151

7.260
 6.964
 6.955





Current Data Parameters
 NAME SU1-275C
 EXPNO 1
 PROCNO 1

F2 - Acquisition Parameters
 Date_ 20110218
 Time 9.33
 INSTRUM spect
 PROBHD 5 mm QNP 1H/13
 PULPROG zgpg30
 TD 65536
 SOLVENT CDCl3
 NS 400
 DS 4
 SWH 23980.814 Hz
 FIDRES 0.365918 Hz
 AQ 1.3664756 sec
 RG 3649.1
 DW 20.850 usec
 DE 6.00 usec
 TE 296.2 K
 D1 2.00000000 sec
 d11 0.03000000 sec
 DELTA 1.89999998 sec
 TD0 1

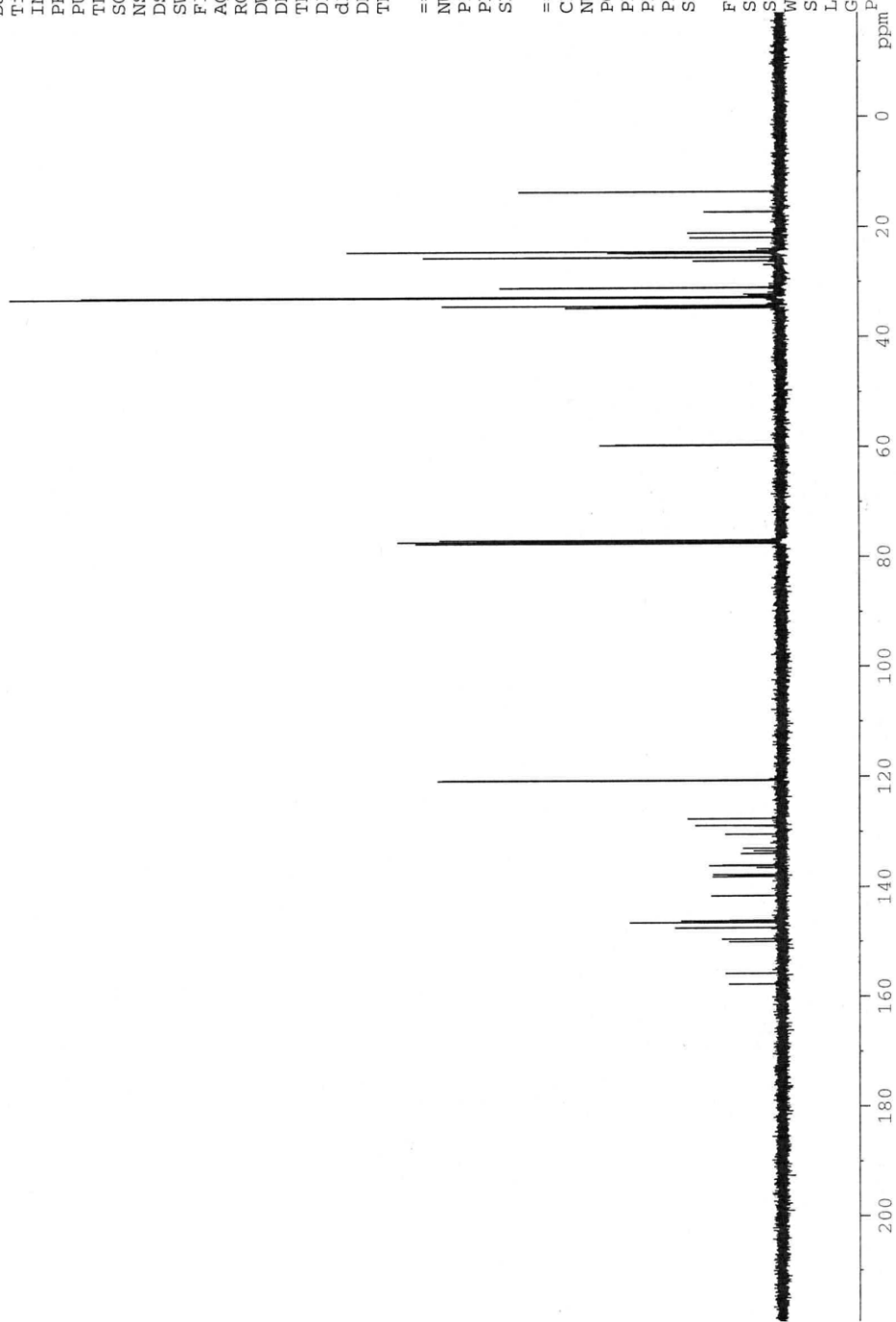
==== CHANNEL f1 =====
 NUC1 13C
 P1 9.38 usec
 PL1 0.00 dB
 SFO1 100.6228298 MHz

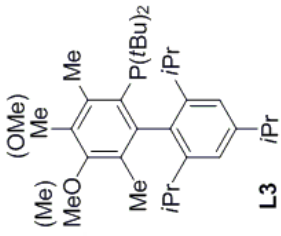
==== CHANNEL f2 =====
 CPDPRG2 waltz16
 NUC2 1H
 PCPD2 90.00 usec
 PL2 0.00 dB
 PLI2 16.10 dB
 PLI3 19.00 dB
 SFO2 400.1316005 MHz

F2 - Processing parameters
 SI 32768
 SF 100.6127480 MHz
 WDW no
 SSB 0
 LB 0
 GB 0
 PC 1.40

157.73
157.72
155.79
150.02
149.56
147.49
147.47
146.57
146.52
146.51
146.22
146.13
141.61
141.57
138.14
138.06
137.81
137.73
136.51
136.12
136.03
133.97
133.94
133.49
133.01
130.44
128.96
128.86
127.59
120.69
120.61

59.67
59.56
34.65
34.54
34.28
34.19
32.82
32.65
31.02
30.99
26.19
26.17
21.92
21.91
21.06
21.03
17.21
17.18
13.57





Current Data Parameters
 NAME SU1-275P
 EXPNO 1
 PROCNO 1

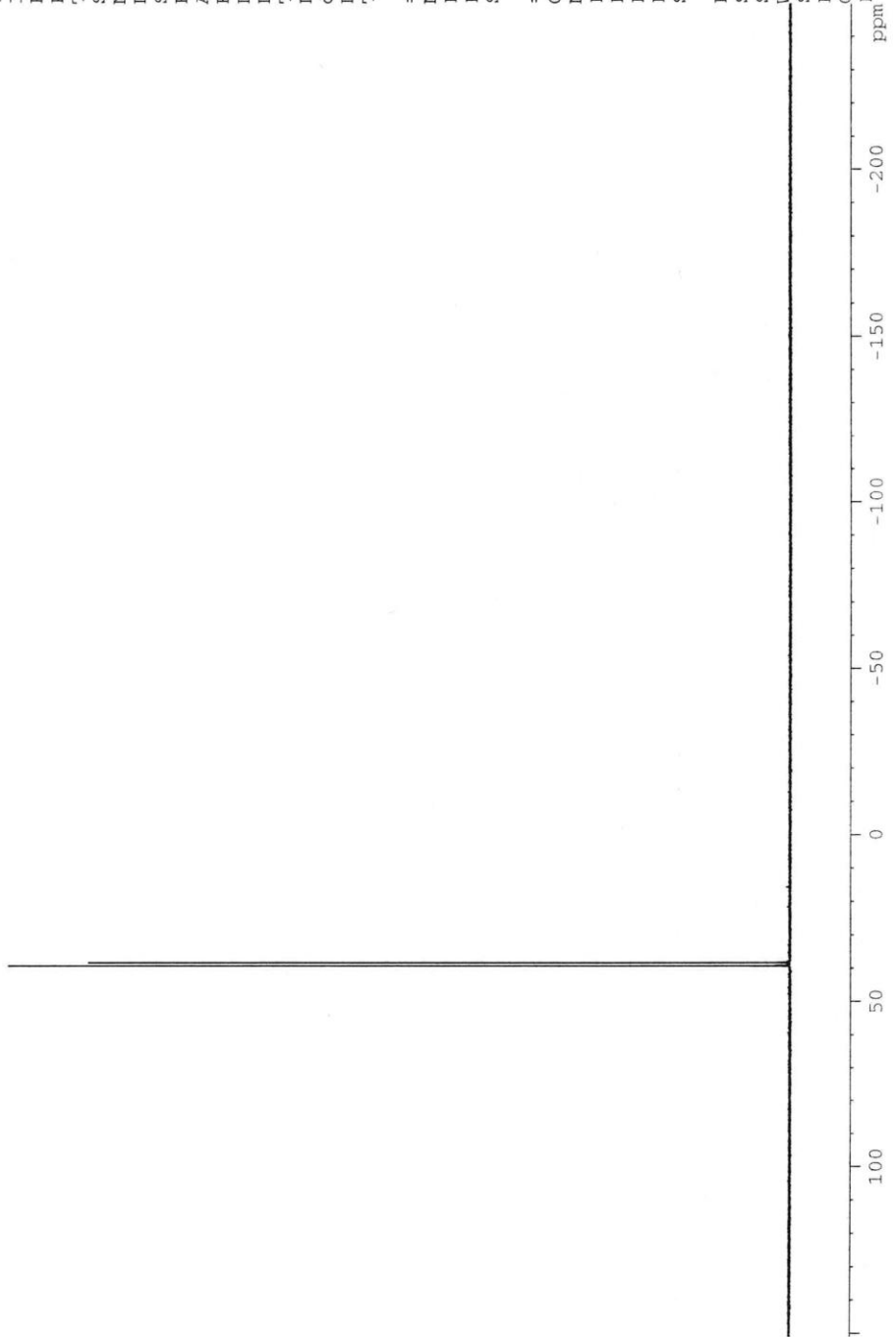
F2 - Acquisition Parameters
 Date_ 20110218
 Time 9.34
 INSTRUM spect
 PROBHD 5 mm QNP 1H/13
 PULPROG zgpg30
 TD 65536
 SOLVENT CDCl3
 NS 16
 DS 4
 SWH 64935.066 Hz
 FIDRES 0.990830 Hz
 AQ 0.5046772 sec
 RG 4096
 DW 7.700 usec
 DE 6.00 usec
 TE 296.2 K
 D1 2.00000000 sec
 d11 0.03000000 sec
 DELTA 1.899999998 sec
 TD0 1

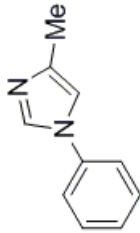
==== CHANNEL f1 =====
 NUC1 31P
 P1 9.25 usec
 PL1 3.00 dB
 SFO1 161.9674940 MHz

==== CHANNEL f2 =====
 CPDPRG2 waltz16
 NUC2 1H
 PCPD2 90.00 usec
 PL2 0.00 dB
 PL12 16.10 dB
 PL13 19.00 dB
 SFO2 400.1316000 MHz

F2 - Processing parameters
 SI 65536
 SF 161.9755024 MHz
 WDW no
 SSB 0
 LB 0.00 Hz
 GB 0
 PC 1.40

39.32
 38.30





3a

Current Data Parameters
 NAME SUI-246
 EXPNO 1
 PROCNO 1

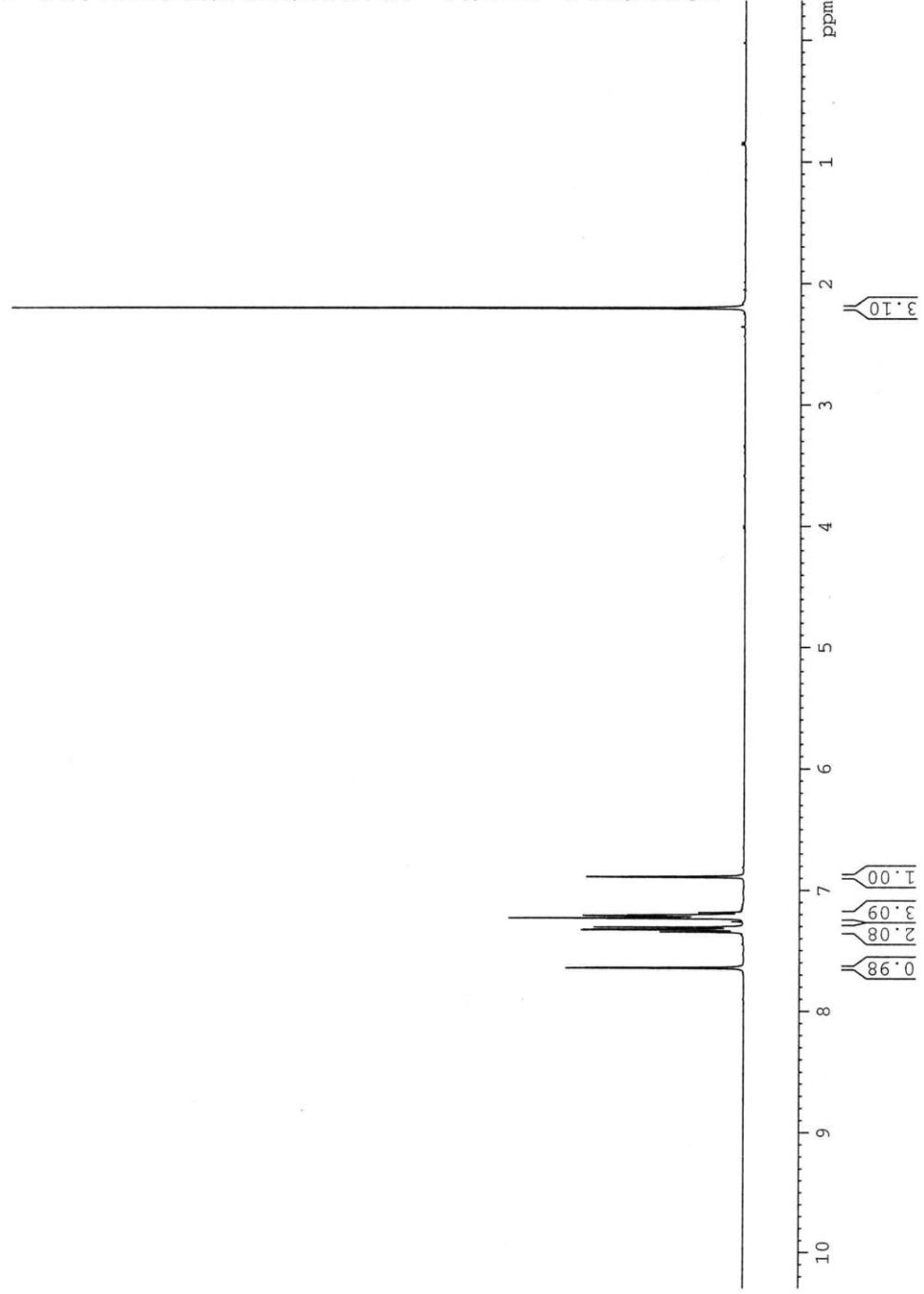
F2 - Acquisition Parameters
 Date_ 20110201
 Time 10.43
 INSTRUM spect
 PROBHD 5 mm QNP 1H/13
 PULPROG zg30
 TD 65536
 SOLVENT CDCl3
 NS 8
 DS 2
 SWH 8278.146 Hz
 FIDRES 0.126314 Hz
 AQ 3.9584243 sec
 RG 57
 DW 60.400 usec
 DE 6.00 usec
 TE 295.2 K
 D1 1.00000000 sec
 TD0 1

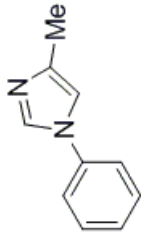
==== CHANNEL f1 =====
 NUC1 1H
 P1 14.00 usec
 PL1 0.00 dB
 SFO1 400.1324710 MHz

F2 - Processing parameters
 SI 65536
 SF 400.1300101 MHz
 WDW no
 SSB 0
 LB 0.00 Hz
 GB 0
 PC 1.00

7.643
7.639
7.346
7.345
7.343
7.340
7.327
7.326
7.324
7.323
7.306
7.305
7.233
7.232
7.229
7.210
7.207
7.202
7.184
6.887

2.204





3a

Current Data Parameters
 NAME SUI-246C
 EXPNO 1
 PROCNO 1

F2 - Acquisition Parameters
 Date_ 20110201
 Time 10.51
 INSTRUM spect
 PROBHD 5 mm QNP 1H/13
 PULPROG zgpg30
 TD 65536
 SOLVENT CDCl3
 NS 128
 DS 4
 SWH 23980.814 Hz
 FIDRES 0.365918 Hz
 AQ 1.3664756 sec
 RG 1625.5
 DW 20.850 usec
 DE 6.00 usec
 TE 296.2 K
 D1 2.00000000 sec
 d11 0.03000000 sec
 DELTA 1.89999998 sec
 TD0 1

==== CHANNEL f1 =====
 NUC1 13C
 P1 9.38 usec
 PL1 0.00 dB
 SFO1 100.6228298 MHz

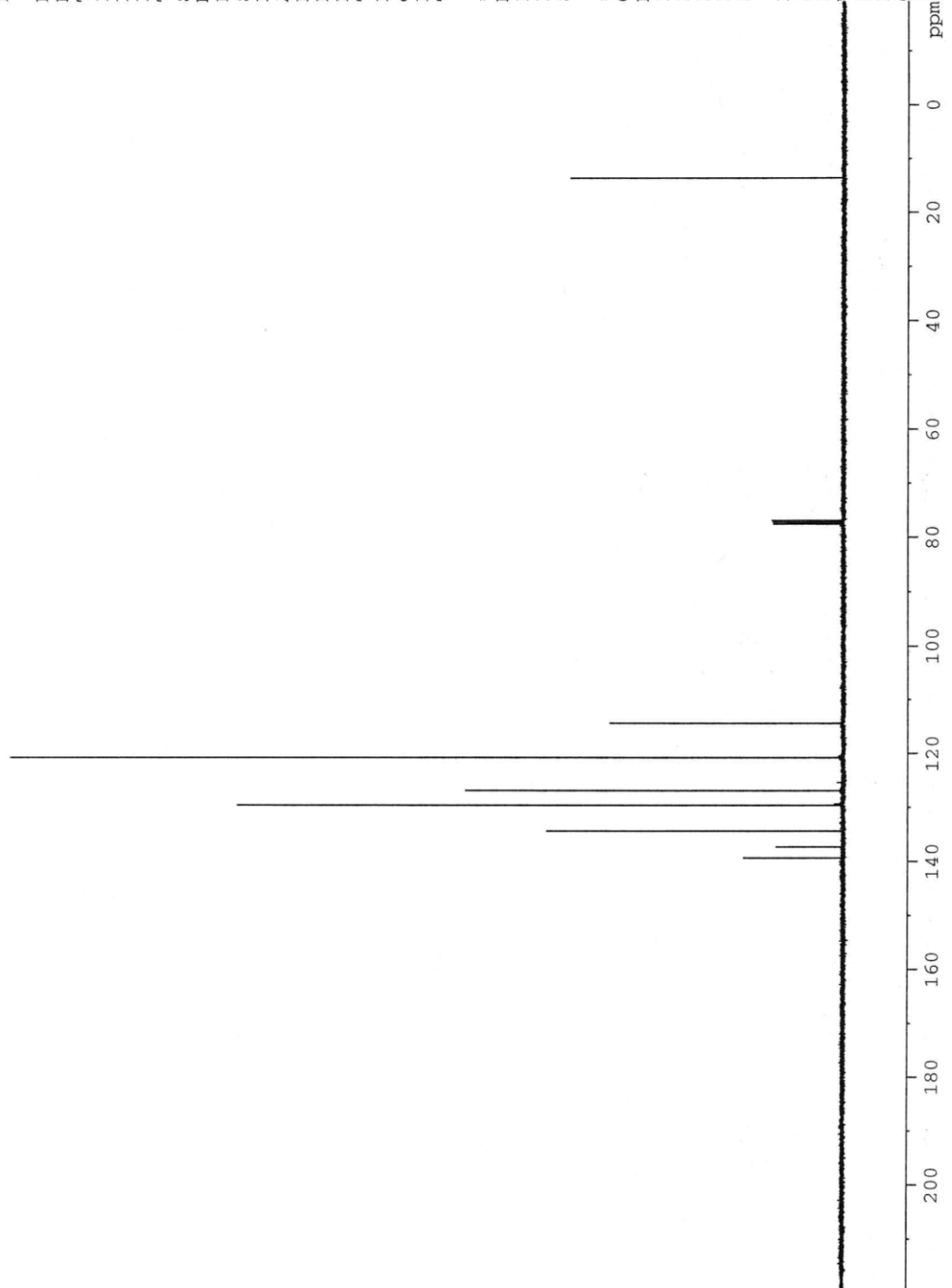
==== CHANNEL f2 =====
 CPDPRG2 waltz16
 NUC2 1H
 PCPD2 90.00 usec
 PL2 0.00 dB
 PLI2 16.10 dB
 PLI3 19.00 dB
 SFO2 400.1316005 MHz

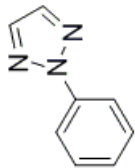
F2 - Processing parameters
 SI 32768
 SF 100.6127754 MHz

WDW no
 SSB 0
 LB 0.00 Hz
 GB 0
 PC 1.40

13.61

139.37
 137.33
 134.40
 129.66
 126.90
 120.82
 114.41





3b

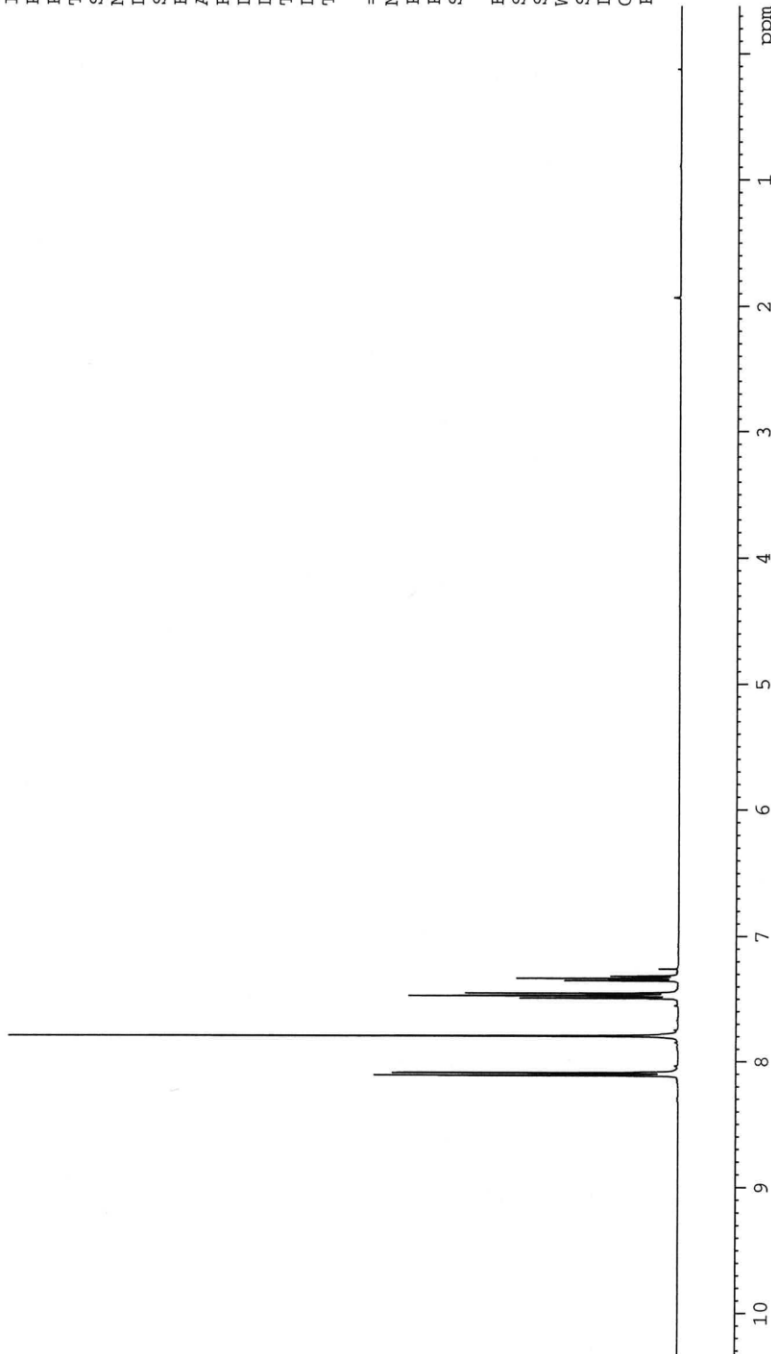
Current Data Parameters
 NAME SU1-247
 EXPNO 1
 PROCNO 1

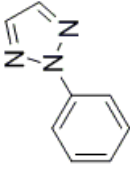
F2 - Acquisition Parameters
 Date_ 20110506
 Time 10.14
 INSTRUM spect
 PROBHD 5 mm QNP 1H/13
 PULPROG zg30
 TD 65536
 SOLVENT CDCl3
 NS 8
 DS 2
 SWH 8278.146 Hz
 FIDRES 0.126314 Hz
 AQ 3.9584243 sec
 RG 322.5
 DW 60.400 usec
 DE 6.00 usec
 TE 683.2 K
 DI 1.00000000 sec
 TD0 1

==== CHANNEL f1 =====
 NUC1 1H
 P1 14.00 usec
 PL1 0.00 dB
 SFO1 400.1324710 MHz

F2 - Processing parameters
 SI 65536
 SF 400.1300095 MHz
 WDW no
 SSB 0
 LB 0.00 Hz
 GB 0
 PC 1.00

8.114
8.111
8.106
8.097
8.095
8.092
8.089
8.089
7.798
7.494
7.489
7.480
7.475
7.473
7.468
7.458
7.453
7.449
7.356
7.353
7.351
7.339
7.338
7.335
7.331
7.319
7.316
7.314





3b

Current Data Parameters
 NAME SU1-247C
 EXPNO 1
 PROCNO 1

F2 - Acquisition Parameters

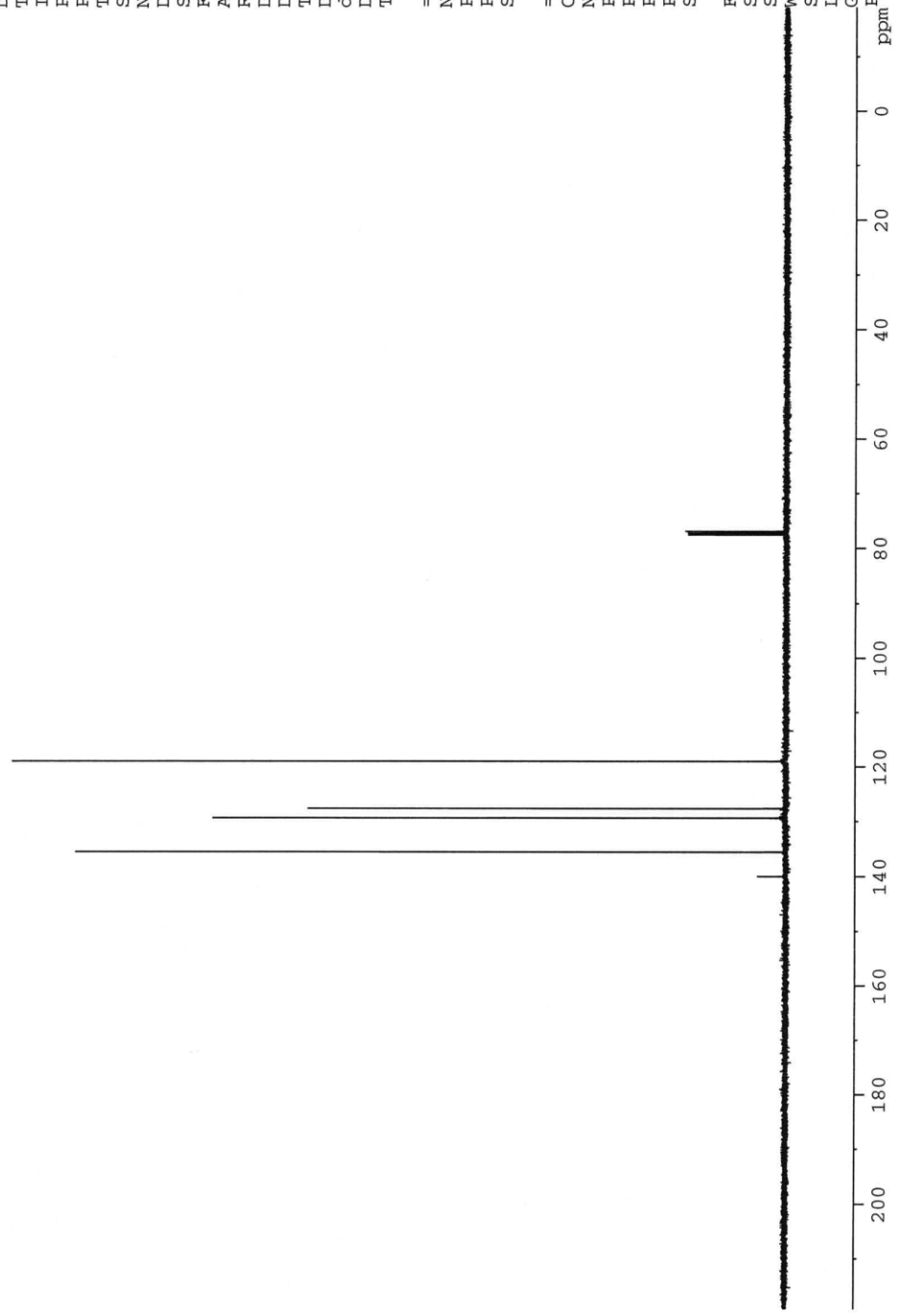
Date_ 20110506
 Time 10.23
 INSTRUM spect
 PROBHD 5 mm QNP 1H/13
 PULPROG zgpg30
 TD 65536
 SOLVENT CDCl3
 NS 128
 DS 4
 SWH 23980.814 Hz
 FIDRES 0.365918 Hz
 AQ 1.3664756 sec
 RG 5160.6
 DW 20.850 usec
 DE 6.00 usec
 TE 683.2 K
 D1 2.00000000 sec
 d11 0.03000000 sec
 DELTA 1.89999998 sec
 TD0 1

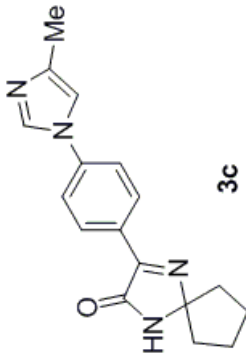
==== CHANNEL f1 =====
 NUC1 13C
 P1 9.38 usec
 PL1 0.00 dB
 SFO1 100.6228298 MHz

==== CHANNEL f2 =====
 CPDPRG2 waltz16
 NUC2 1H
 P2 90.00 usec
 PL2 0.00 dB
 PL12 16.10 dB
 PL13 19.00 dB
 SFO2 400.1316005 MHz

F2 - Processing parameters
 SI 32768
 SF 100.6127589 MHz
 WDW no
 SSB 0
 LB 0.00 Hz
 GB 0
 PC 1.40

140.01
 135.61
 129.40
 127.64
 119.06





Current Data Parameters
 NAME SUI-257-2
 EXPNO 1
 PROCNO 1

F2 - Acquisition Parameters
 Date_ 20110208
 Time 9.17
 INSTRUM spect
 PROBHD 5 mm QNP 1H/13
 PULPROG zg30
 TD 65536
 SOLVENT DMSO
 NS 16
 DS 2
 SWH 8278.146 Hz
 FIDRES 0.126314 Hz
 AQ 3.9584243 sec
 RG 128
 DW 60.400 usec
 DE 6.00 usec
 TE 295.2 K
 D1 1.00000000 sec
 TD0 1

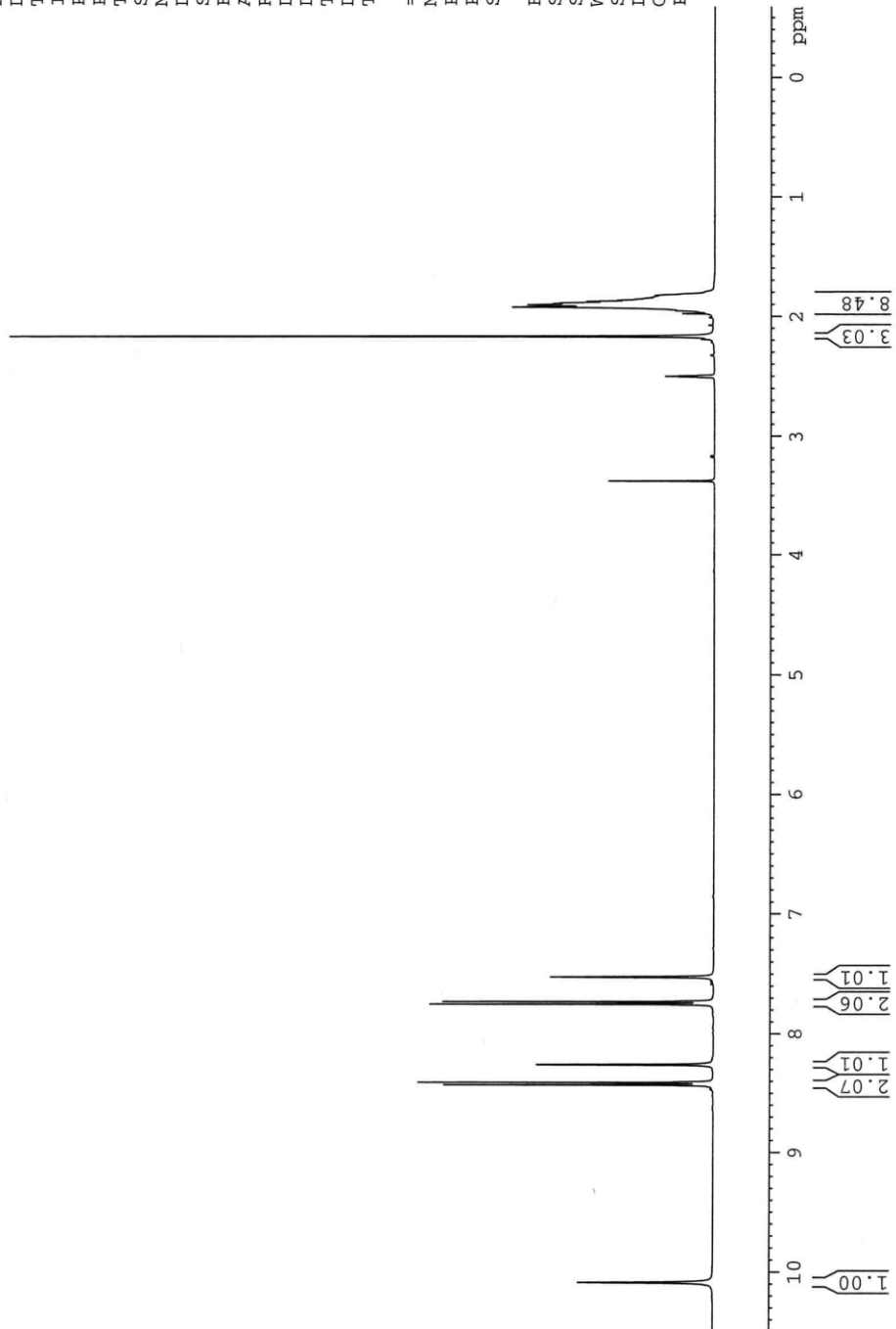
==== CHANNEL f1 =====
 NUC1 1H
 P1 14.00 usec
 PL1 0.00 dB
 SF01 400.1324710 MHz

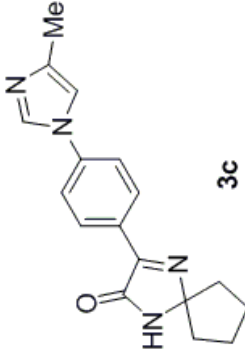
F2 - Processing parameters
 SI 65536
 SF 400.1300031 MHz
 WDW no
 SSB 0
 LB 0.00 Hz
 GB 0
 PC 1.00

2.169
1.977
1.923
1.909
1.902
1.892
1.887
1.826

8.432
8.410
8.260
7.752
7.730
7.525

10.088





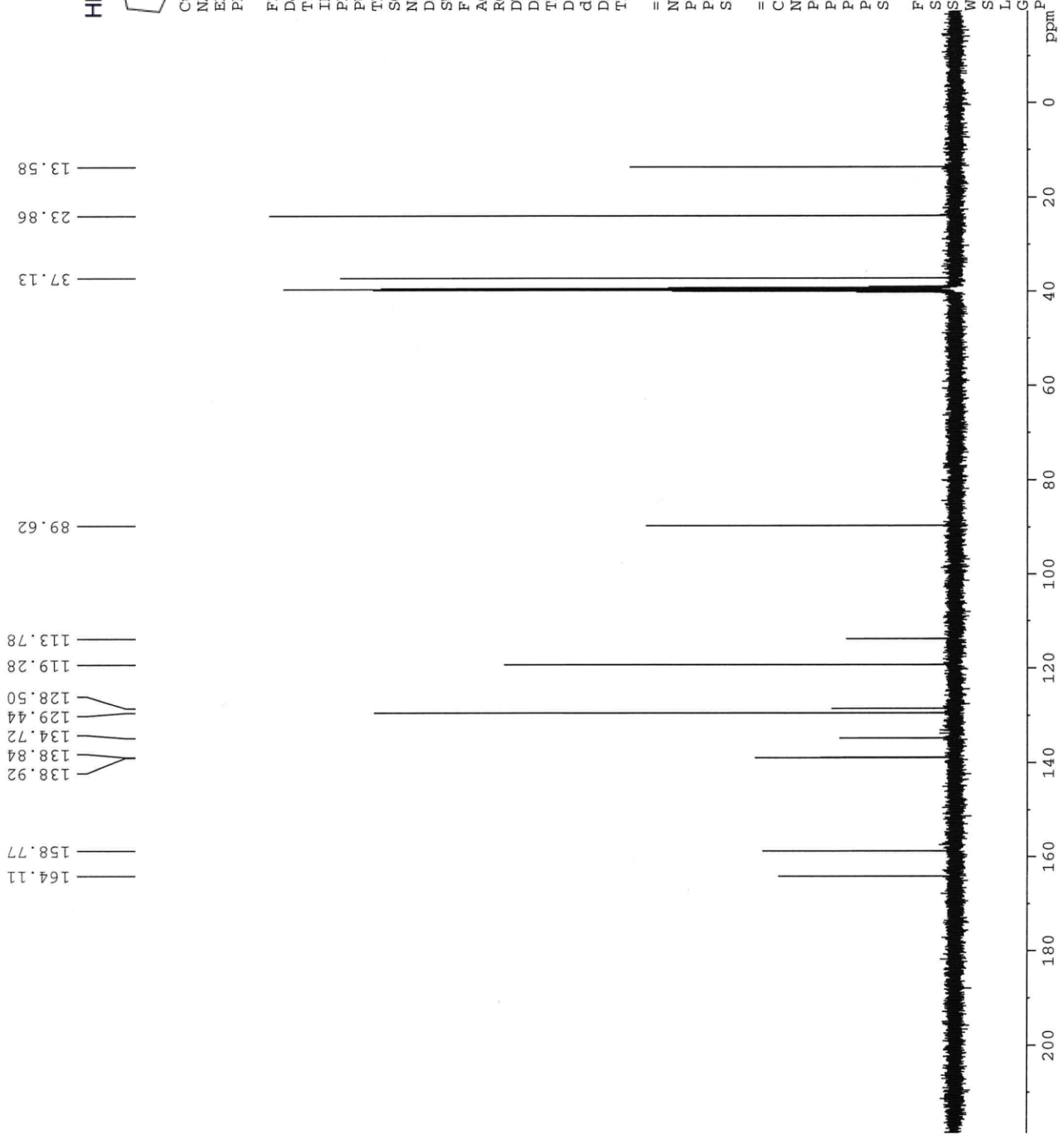
Current Data Parameters
 NAME SU1-257-2C
 EXPNO 1
 PROCNO 1

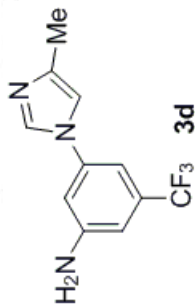
F2 - Acquisition Parameters
 Date_ 20110208
 Time 9.32
 INSTRUM spect
 PROBHD 5 mm QNP 1H/13
 PULPROG zgpg30
 TD 65536
 SOLVENT DMSO
 NS 256
 DS 4
 SWH 23980.814 Hz
 FIDRES 0.365918 Hz
 AQ 1.3664756 sec
 RG 1625.5
 DW 20.850 usec
 DE 6.00 usec
 TE 296.2 K
 D1 2.00000000 sec
 d11 0.03000000 sec
 DELTA 1.89999998 sec
 TD0 1

==== CHANNEL f1 =====
 NUC1 13C
 P1 9.38 usec
 PL1 0.00 dB
 SF01 100.6228298 MHz

==== CHANNEL f2 =====
 CPDPRG2 waltz16
 NUC2 1H
 PCPD2 90.00 usec
 PL2 0.00 dB
 PL12 16.10 dB
 PL13 19.00 dB
 SF02 400.1316005 MHz

F2 - Processing parameters
 SI 32768
 SF 100.6128158 MHz
 WDW no
 SSB 0
 LB 0.00 Hz
 GB 0
 PC 1.40



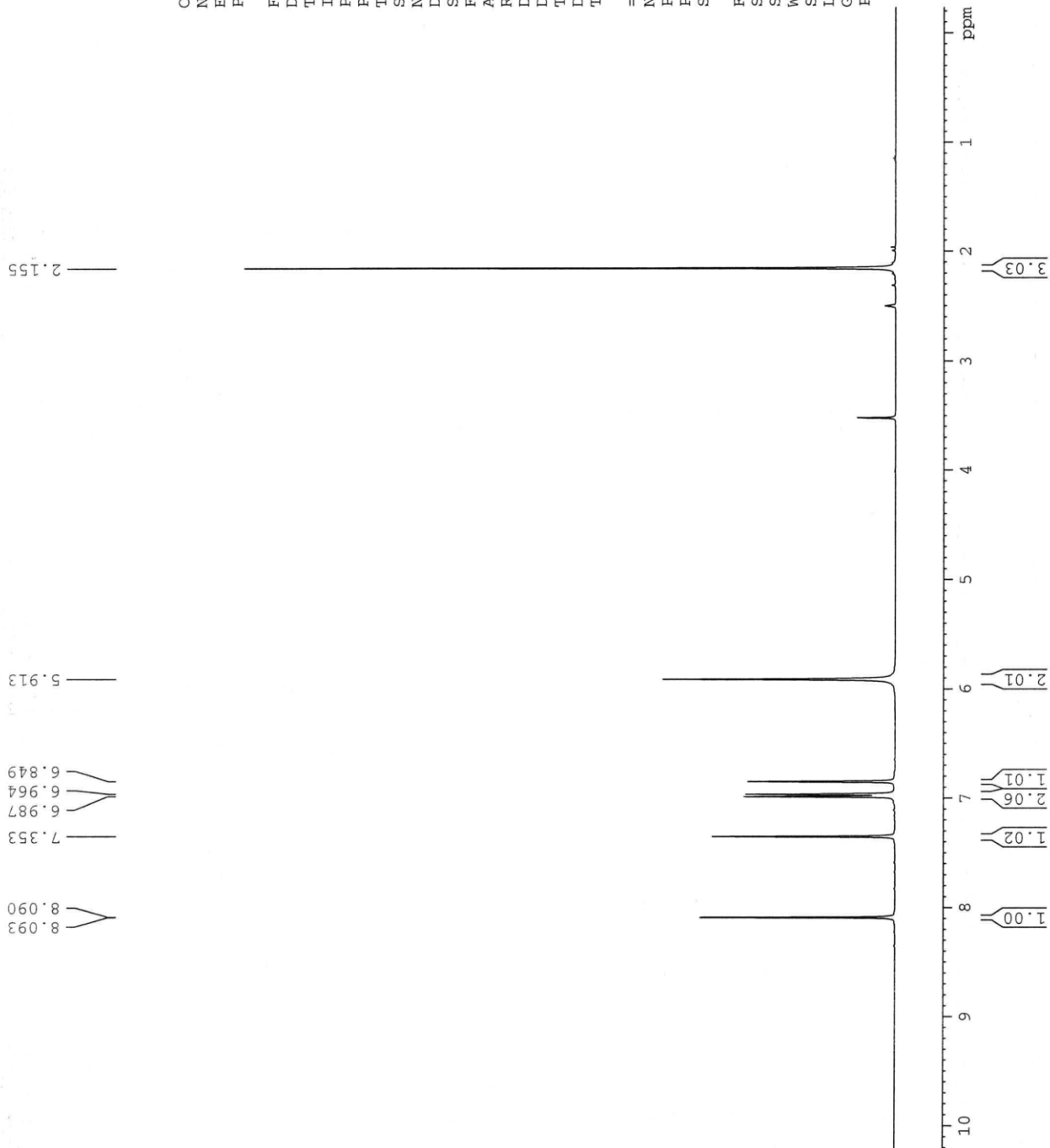


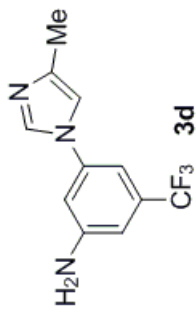
Current Data Parameters
 NAME SU2-83
 EXPNO 1
 PROCNO 1

F2 - Acquisition Parameters
 Date_ 20110503
 Time 9.36
 INSTRUM spect
 PROBHD 5 mm QNP 1H/13
 PULPROG zg30
 TD 65536
 SOLVENT DMSO
 NS 16
 DS 2
 SWH 8278.146 Hz
 FIDRES 0.126314 Hz
 AQ 3.9584243 sec
 RG 287.4
 DW 60.400 usec
 DE 6.00 usec
 TE 683.2 K
 D1 1.00000000 sec
 TDO 1

==== CHANNEL f1 =====
 NUC1 1H
 P1 14.00 usec
 PL1 0.00 dB
 SFO1 400.1324710 MHz

F2 - Processing parameters
 SI 65536
 SF 400.1300033 MHz
 WDW no
 SSB 0
 LB 0.00 Hz
 GB 0
 PC 1.00





Current Data Parameters
 NAME SU2-83C
 EXPNO 1
 PROCNO 1

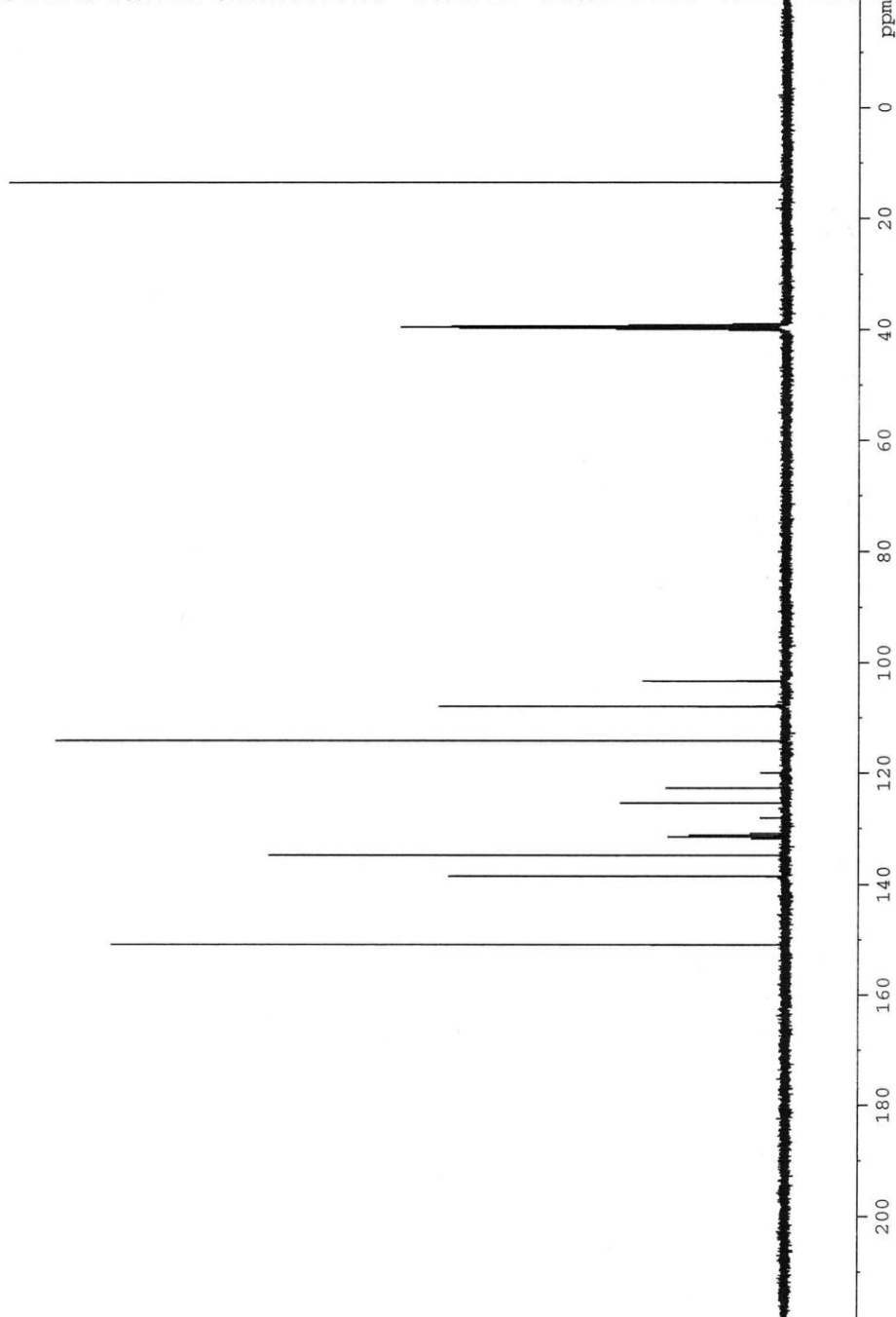
F2 - Acquisition Parameters
 Date_ 20110503
 Time 9.52
 INSTRUM spect
 PROBHD 5 mm QNP 1H/13
 PULPROG zgpg30
 TD 65536
 SOLVENT DMSO
 NS 256
 DS 4
 SWH 23980.814 Hz
 FIDRES 0.365918 Hz
 AQ 1.3664756 sec
 RG 1625.5
 DW 20.850 usec
 DE 6.00 usec
 TE 683.2 K
 D1 2.00000000 sec
 d11 0.03000000 sec
 DELTA 1.89999998 sec
 TDO 1

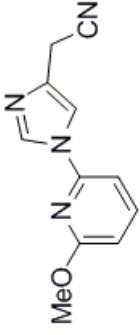
==== CHANNEL f1 =====
 NUC1 13C
 P1 9.38 usec
 PL1 0.00 dB
 SFO1 100.6228298 MHz
 ===== CHANNEL f2 =====
 CPDPRG2 waltz16
 NUC2 1H
 PCPD2 90.00 usec
 PL2 0.00 dB
 PL12 16.10 dB
 PL13 19.00 dB
 SFO2 400.1316005 MHz

F2 - Processing parameters
 SI 32768
 SF 100.6128080 MHz
 MDW no
 SSB 0
 LB 0.00 Hz
 GB 0
 PC 1.40

150.90
 138.53
 138.52
 134.78
 131.81
 131.81
 131.49
 131.18
 130.86
 128.13
 125.42
 122.72
 120.01
 114.21
 107.96
 103.39
 103.35
 103.32
 103.28

13.49





3e

Current Data Parameters
 NAME SU2-12
 EXENO 1
 PROCNO 1

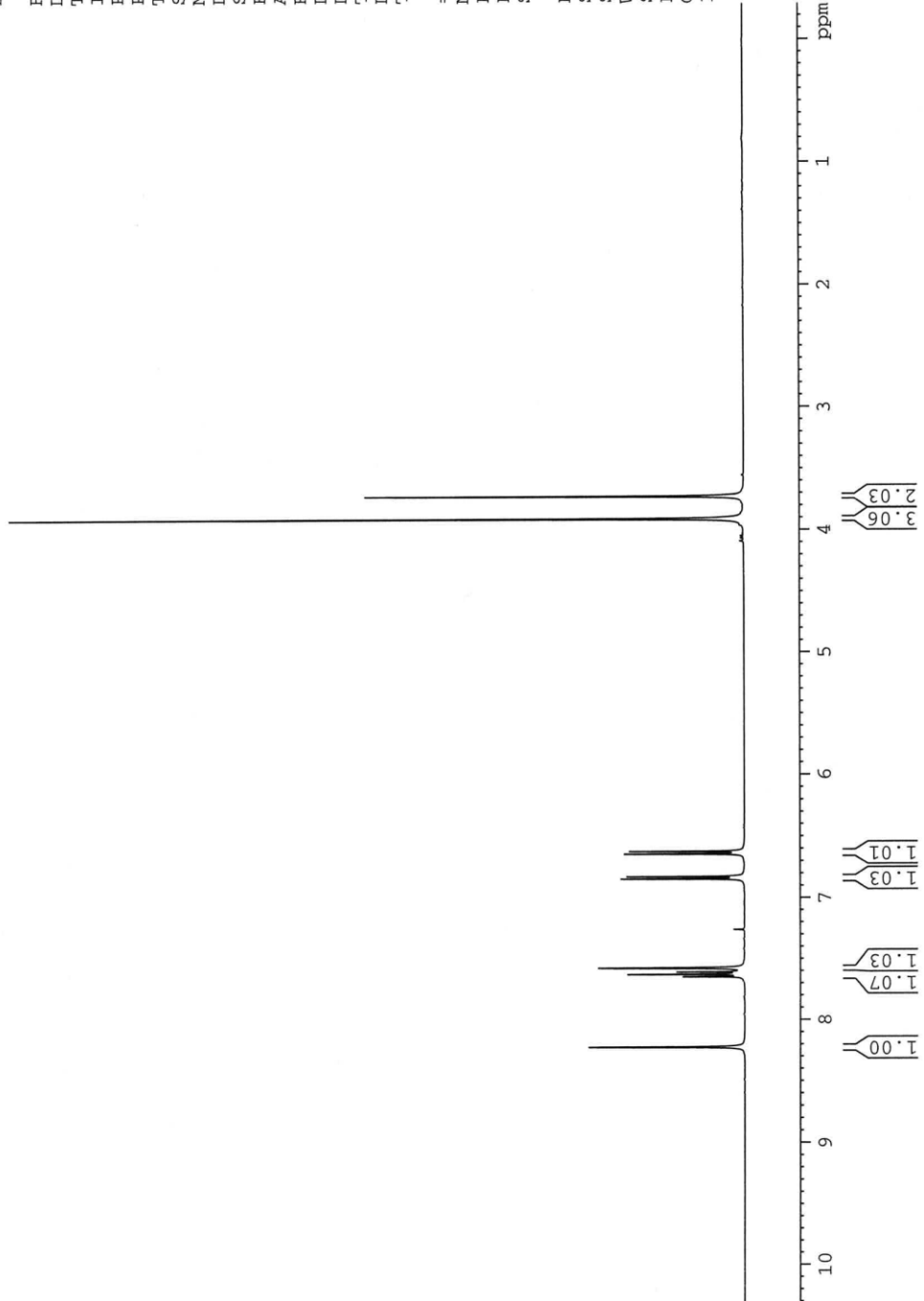
F2 - Acquisition Parameters
 Date_ 20110315
 Time 12.28
 INSTRUM spect
 PROBD 5 mm QNP 1H/13
 PULPROG zg30
 TD 65536
 SOLVENT CDCl3
 NS 16
 DS 2
 SWH 8278.146 Hz
 FIDRES 0.126314 Hz
 AQ 3.9584243 sec
 RG 114
 DW 60.400 usec
 DE 6.00 usec
 TE 683.2 K
 D1 1.00000000 sec
 TD0 1

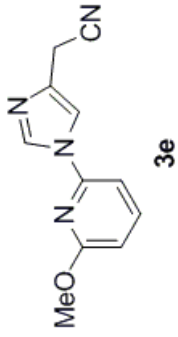
==== CHANNEL f1 =====
 NUC1 1H
 P1 14.00 usec
 PL1 0.00 dB
 SF01 400.1324710 MHz

F2 - Processing Parameters
 SI 65536
 SF 400.1300098 MHz
 WDW no
 SSB 0
 LB 0.00 Hz
 GB 0
 PC 1.00

3.729
 3.913

6.623
 6.644
 6.829
 6.848
 7.577
 7.610
 7.630
 7.649
 8.225





Current Data Parameters
 NAME SU2-12C
 EXPNO 1
 PROCNO 1

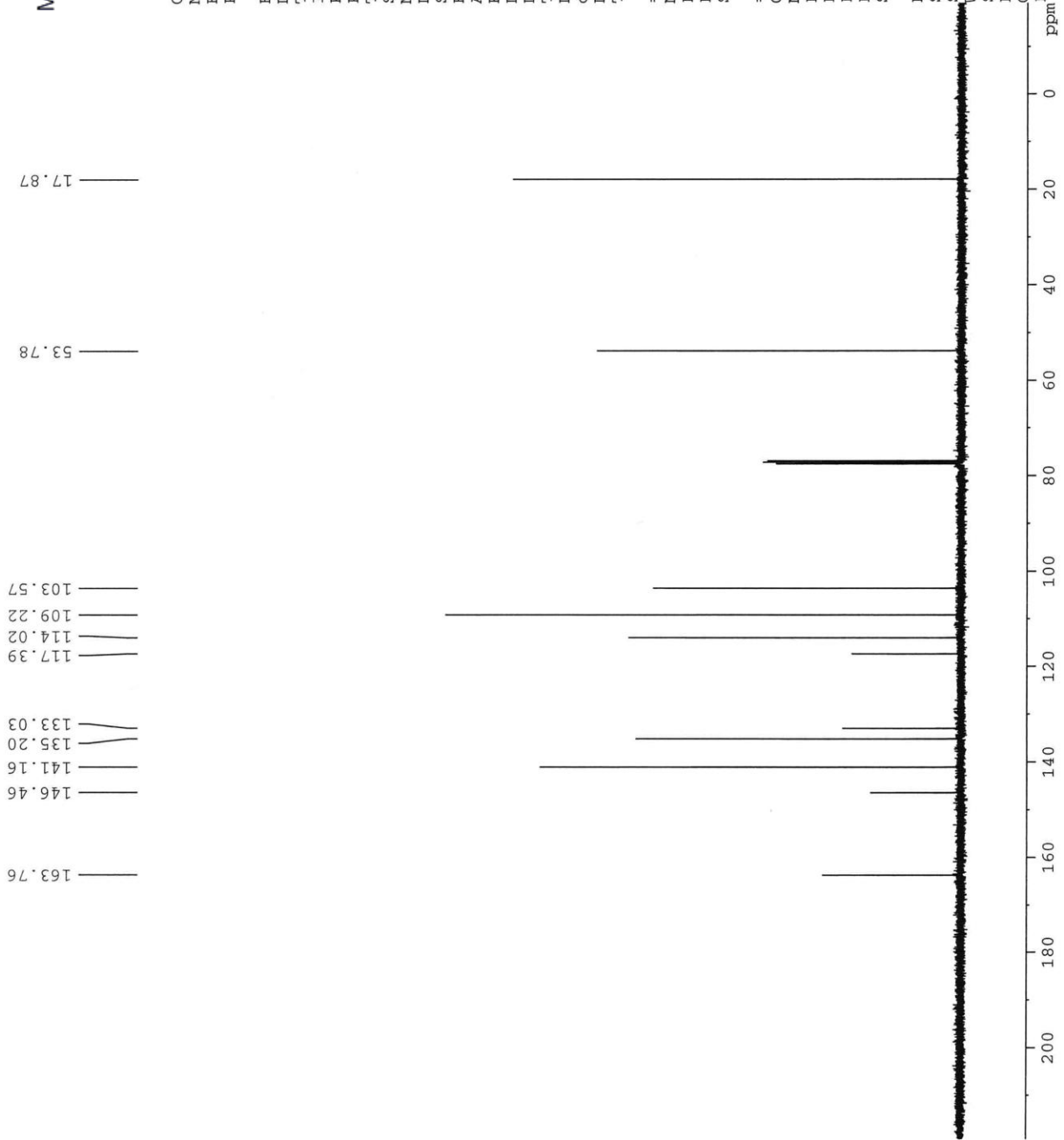
F2 - Acquisition Parameters

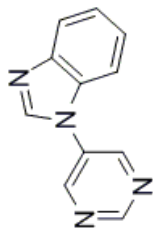
Date_ 20110315
 Time 12.43
 INSTRUM spect
 PROBHD 5 mm QNP 1H/13
 PULPROG zgpg30
 TD 65536
 SOLVENT CDCl3
 NS 256
 DS 4
 SWH 23980.814 Hz
 FIDRES 0.365918 Hz
 AQ 1.3664756 sec
 RG 1625.5
 DW 20.850 usec
 DE 6.00 usec
 TE 683.2 K
 D1 2.0000000 sec
 d11 0.0300000 sec
 DELTA 1.89999998 sec
 TD0 1

==== CHANNEL f1 =====
 NUC1 13C
 P1 9.38 usec
 PL1 0.00 dB
 SFO1 100.6228298 MHz

==== CHANNEL f2 =====
 CPDPRG2 waltz16
 NUC2 1H
 PCPD2 90.00 usec
 PL2 0.00 dB
 PL12 16.10 dB
 PL13 19.00 dB
 SFO2 400.1316005 MHz

F2 - Processing parameters
 SI 32768
 SF 100.6127634 MHz
 WDW no
 SSB 0
 LB 0.00 Hz
 GB 0
 PC 1.40





3f

Current Data Parameters
 NAME SUI-223C
 EXPNO 1
 PROCNO 1

F2 - Acquisition Parameters
 Date_ 20110727
 Time 9.12
 INSTRUM spect
 PROBHD 5 mm QNP 1H/13
 PULPROG zgpg30
 TD 65536
 SOLVENT CDCl3
 NS 128
 DS 4
 SWH 23980.814 Hz
 FIDRES 0.365918 Hz
 AQ 1.3664756 sec
 RG 1625.5
 DW 20.850 usec
 DE 6.00 usec
 TE 683.2 K
 D1 2.00000000 sec
 d11 0.03000000 sec
 DELTA 1.89999998 sec
 TD0 1

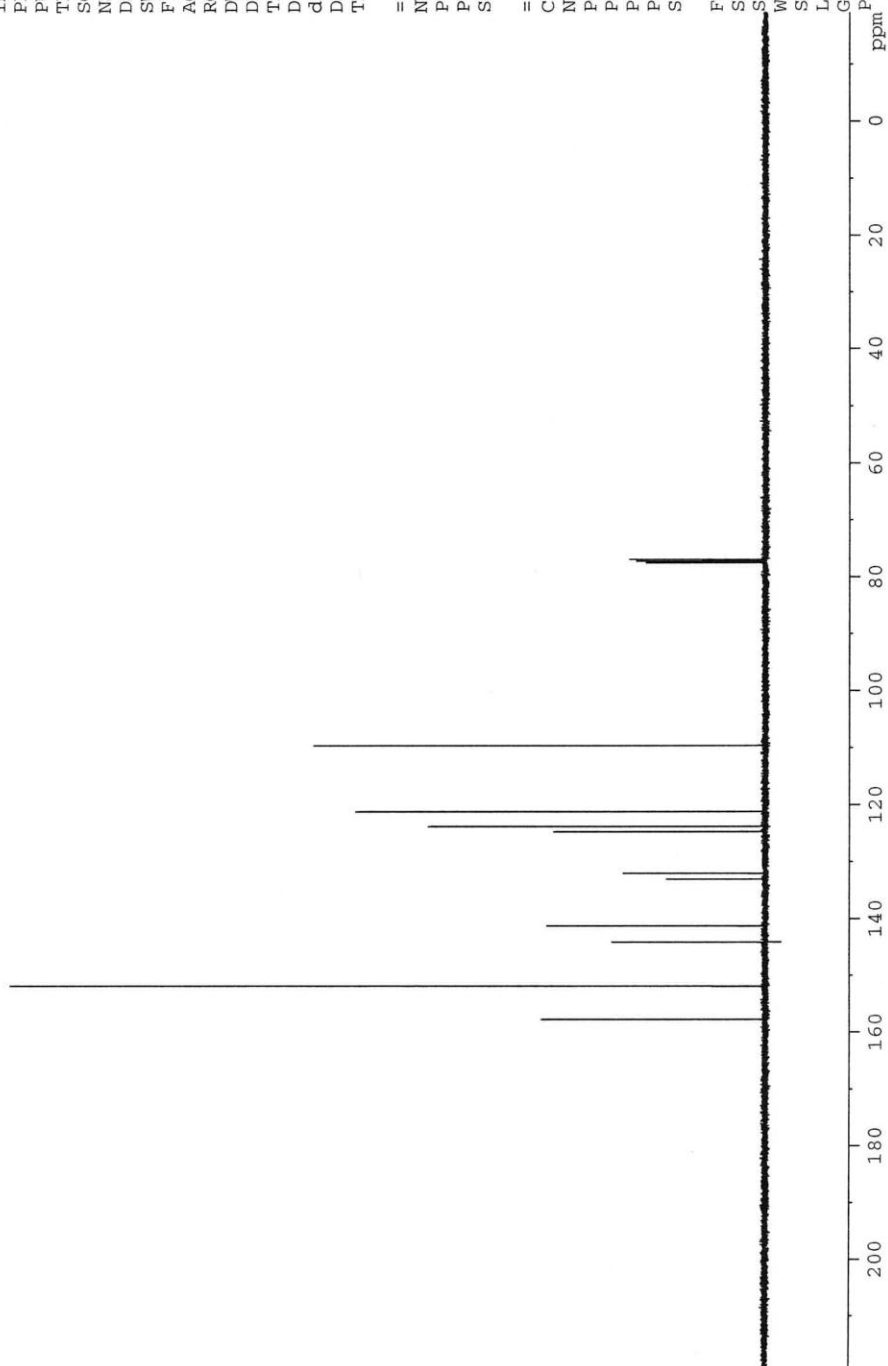
==== CHANNEL f1 =====
 NUC1 13C
 P1 9.38 usec
 PL1 0.00 dB
 SFO1 100.6228298 MHz

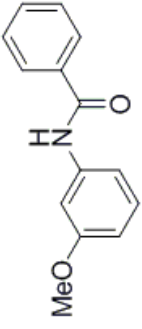
==== CHANNEL f2 =====
 CPDPRG2 waltz16
 NUC2 1H
 PCPD2 90.00 usec
 PL2 0.00 dB
 PL12 16.10 dB
 PL13 19.00 dB
 SFO2 400.1316005 MHz

F2 - Processing parameters
 SI 32768
 SF 100.6127625 MHz

WDW no
 SSB 0
 LB 0.00 Hz
 GB 0
 PC 1.40

157.76
 151.92
 144.17
 141.32
 133.05
 132.05
 124.76
 123.82
 121.23
 109.67





Current Data Parameters
 NAME SU1-280
 EXPNO 1
 PROCNO 1

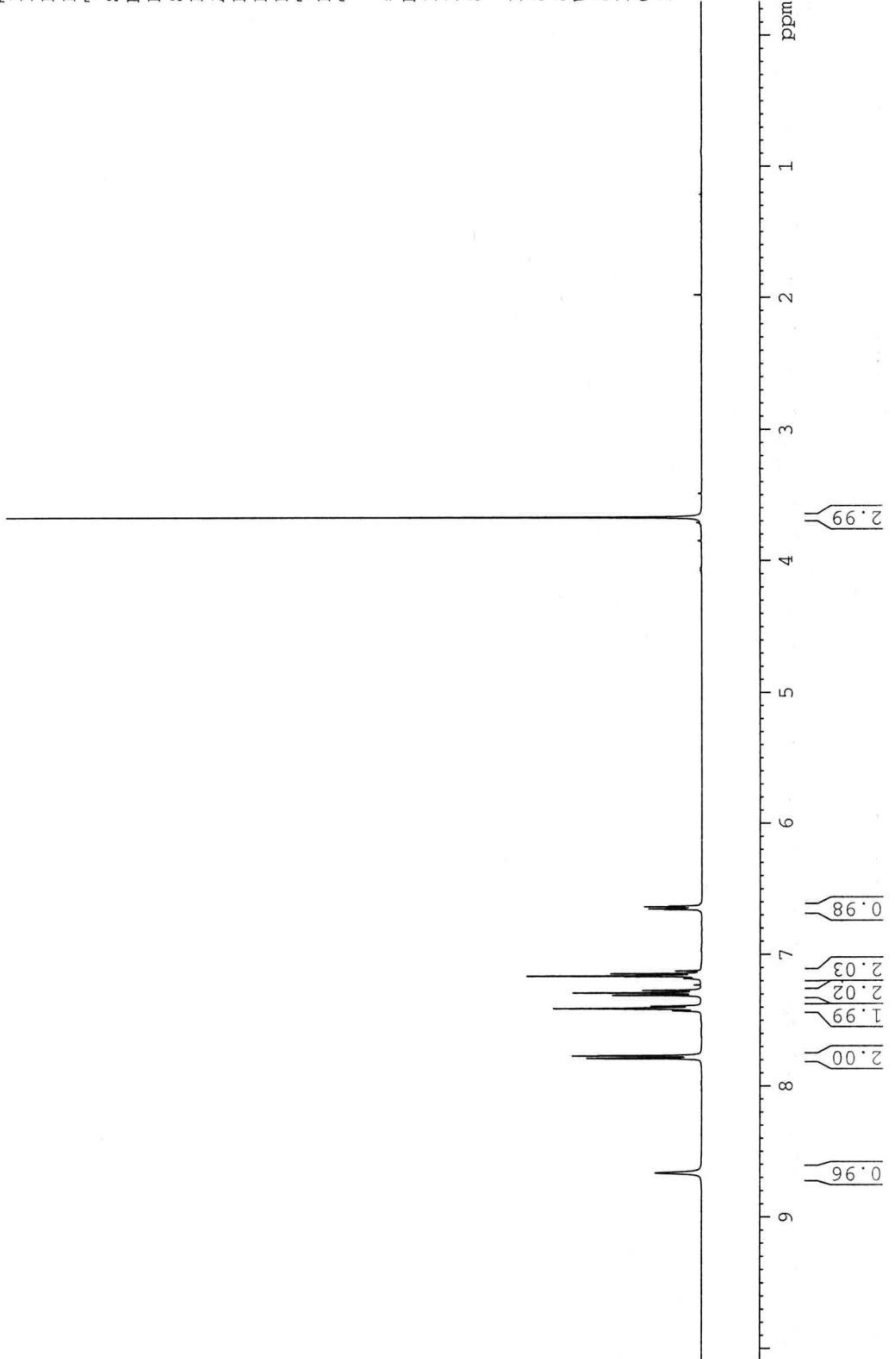
F2 - Acquisition Parameters
 Date_ 20110219
 Time 9.59
 INSTRUM spect
 PROBHD 5 mm QNP 1H/13
 PULPROG zg30
 TD 65536
 SOLVENT CDC13
 NS 8
 DS 2
 SWH 8278.146 Hz
 FIDRES 0.126314 Hz
 AQ 3.9584243 sec
 RG 57
 DW 60.400 usec
 DE 6.00 usec
 TE 296.2 K
 D1 1.00000000 sec
 TD0 1

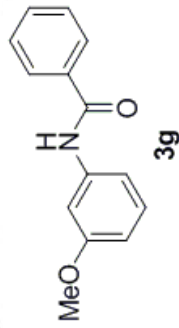
==== CHANNEL f1 =====
 NUC1 1H
 P1 14.00 usec
 PL1 0.00 dB
 SFO1 400.1324710 MHz

F2 - Processing parameters
 SI 65536
 SF 400.1300212 MHz
 WDW no
 SSB 0
 LB 0.00 Hz
 GB 0
 PC 1.00

8.663
7.789
7.787
7.769
7.766
7.430
7.427
7.424
7.409
7.404
7.393
7.390
7.387
7.308
7.288
7.270
7.181
7.177
7.166
7.162
7.157
7.144
7.124
6.658
6.652
6.646
6.640
6.635
6.629

3.672





Current Data Parameters
 NAME SUI-280C
 EXPNO 1
 PROCNO 1

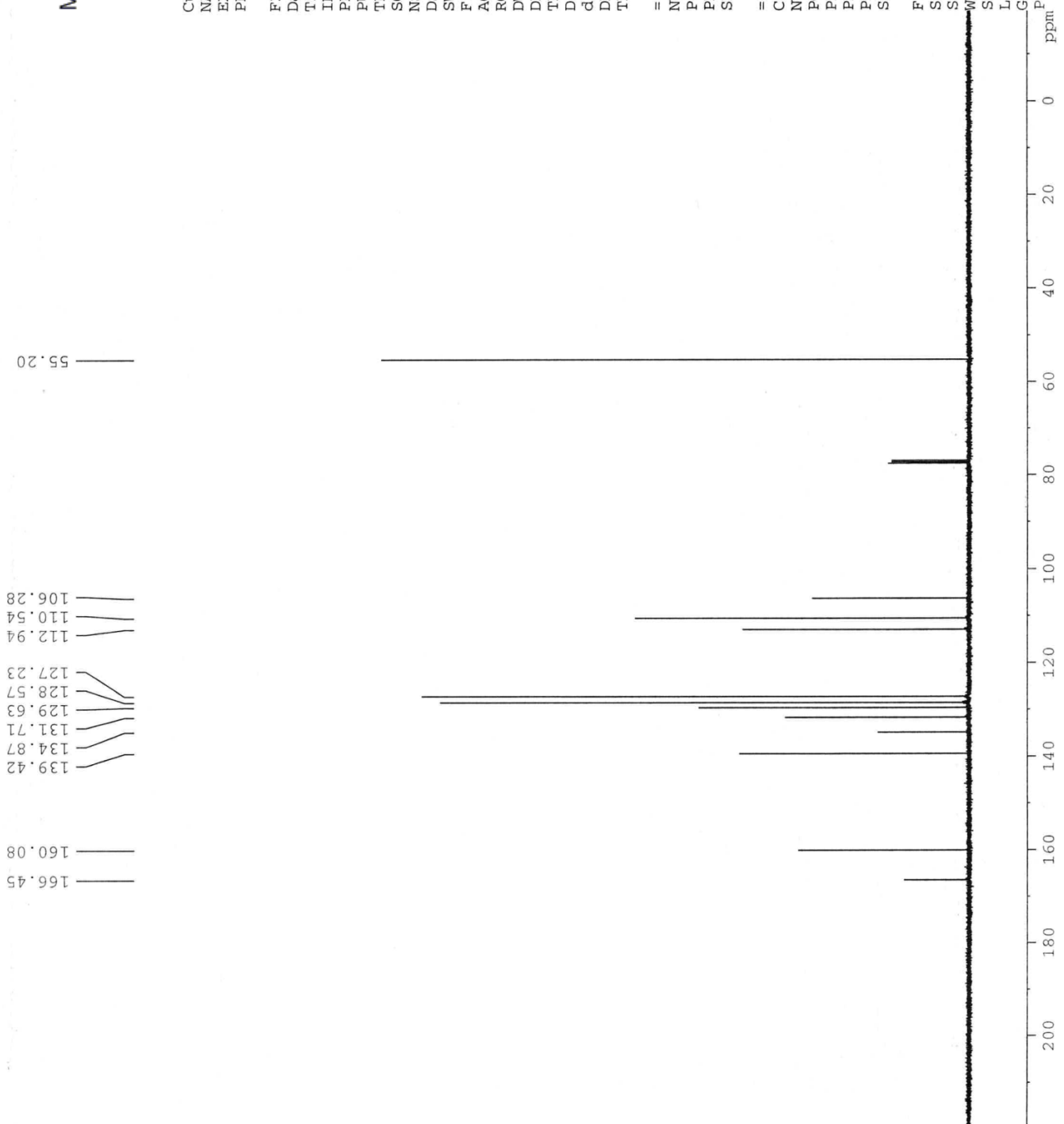
F2 - Acquisition Parameters
 Date_ 20110219
 Time 10.07
 INSTRUM spect
 PROBHD 5 mm QNP 1H/13
 PULPROG zgpg30
 TD 65536
 SOLVENT CDCl3
 NS 128
 DS 4
 SWH 23980.814 Hz
 FIDRES 0.365918 Hz
 AQ 1.3664756 sec
 RG 4096
 DW 20.850 usec
 DE 6.00 usec
 TE 296.2 K
 D1 2.00000000 sec
 d11 0.03000000 sec
 DELTA 1.89999998 sec
 TD0 1

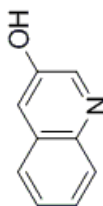
==== CHANNEL f1 =====
 NUC1 13C
 P1 9.38 usec
 PL1 0.00 dB
 SFO1 100.6228298 MHz

==== CHANNEL f2 =====
 CPDPRG2 waltz16
 NUC2 1H
 PCPD2 90.00 usec
 PL2 0.00 dB
 PL12 16.10 dB
 PL13 19.00 dB
 SFO2 400.1316005 MHz

F2 - Processing parameters
 SI 32768
 SF 100.6127704 MHz

WDW no
 SSB 0
 LB 0.00 Hz
 GB 0
 PC 1.40





3h

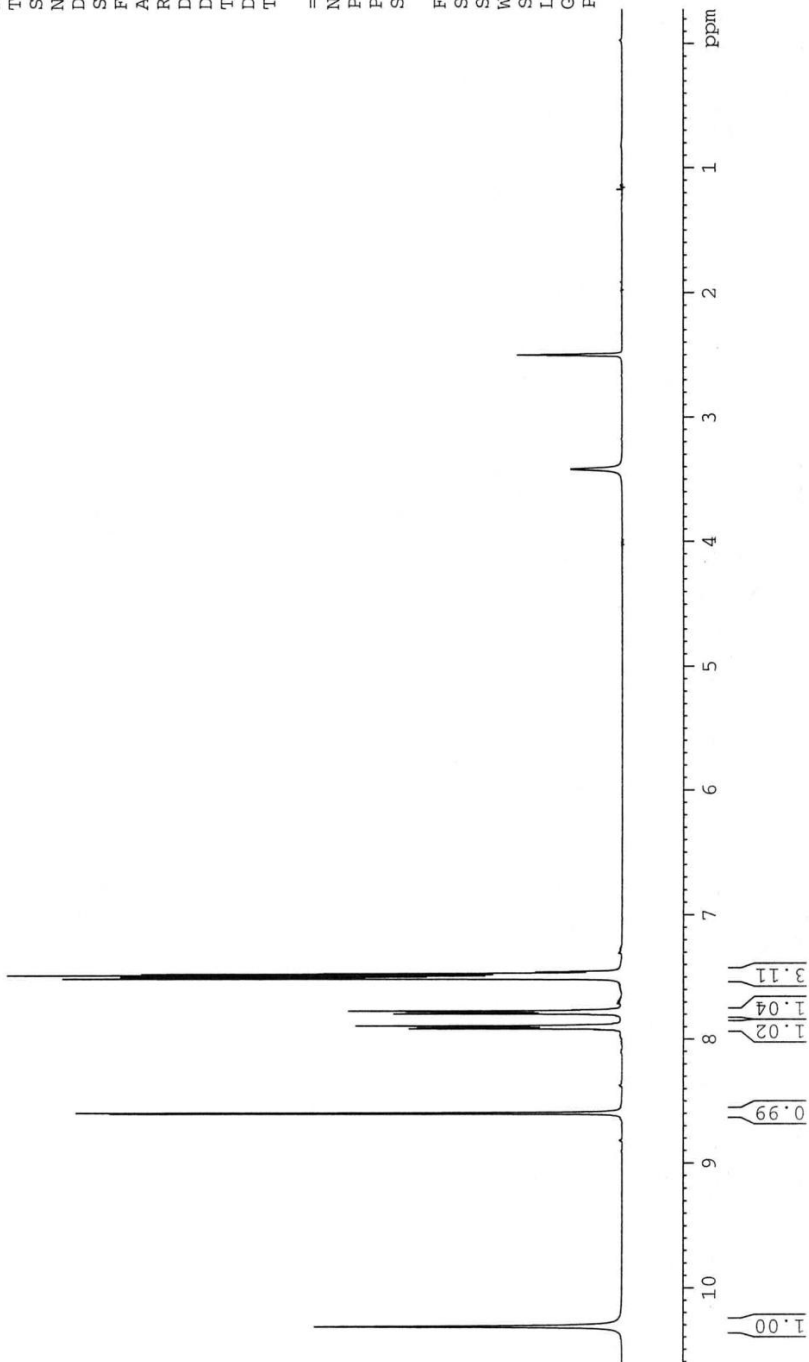
Current Data Parameters
 NAME SU1-281
 EXPNO 1
 PROCNO 1

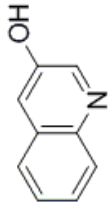
F2 - Acquisition Parameters
 Date_ 20110219
 Time 10.10
 INSTRUM spect
 PROBHD 5 mm QNP 1H/13
 PULPROG zg30
 TD 65536
 SOLVENT DMSO
 NS 8
 DS 2
 SWH 8278.146 Hz
 FIDRES 0.126314 Hz
 AQ 3.9584243 sec
 RG 256
 DW 60.400 usec
 DE 6.00 usec
 TE 296.2 K
 D1 1.00000000 sec
 TD0 1

==== CHANNEL f1 =====
 NUC1 1H
 P1 14.00 usec
 PL1 0.00 dB
 SFO1 400.1324710 MHz

F2 - Processing parameters
 SI 65536
 SF 400.1300034 MHz
 WDW no
 SSB 0
 LB 0.00 Hz
 GB 0
 PC 1.00

10.313
 8.602
 8.595
 7.915
 7.910
 7.908
 7.901
 7.899
 7.895
 7.891
 7.794
 7.790
 7.784
 7.777
 7.770
 7.511
 7.504
 7.499
 7.493
 7.484
 7.474
 7.469
 7.457





3h

150.92
143.95
142.47
129.07
128.64
126.72
126.53
125.84
115.29

Current Data Parameters
 NAME SU1-281C
 EXPNO 1
 PROCNO 1

F2 - Acquisition Parameters

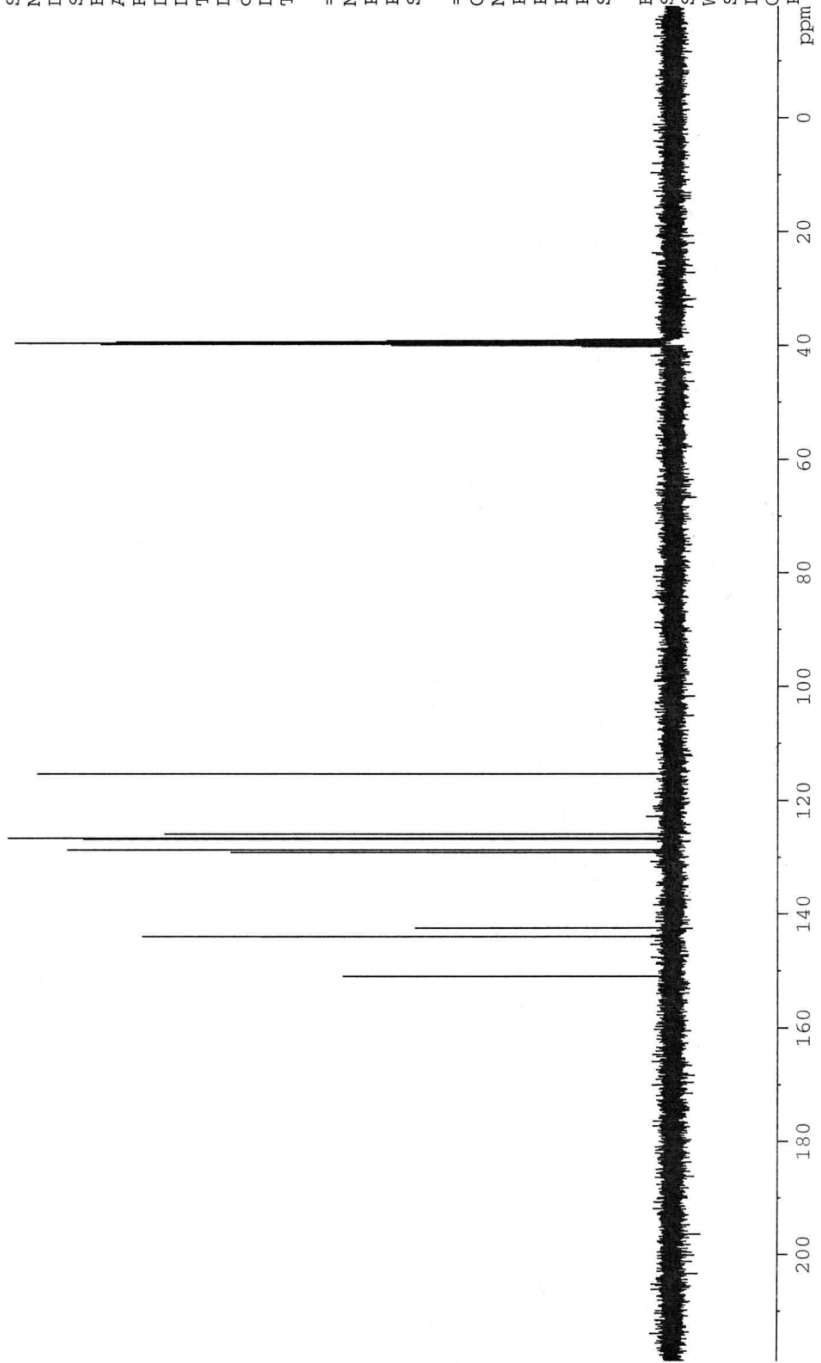
Date_ 20110219
 Time 10.18
 INSTRUM spect
 PROBHD 5 mm QNP 1H/13
 PULPROG zgpg30
 TD 65536
 SOLVENT DMSO
 NS 128
 DS 4
 SWH 23980.814 Hz
 FIDRES 0.365918 Hz
 AQ 1.3664756 sec
 RG 1625.5
 DW 20.850 usec
 DE 6.00 usec
 TE 296.2 K
 D1 2.0000000 sec
 d11 0.0300000 sec
 DELTA 1.89999998 sec
 TD0 1

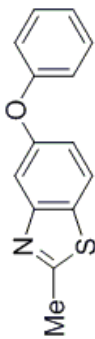
==== CHANNEL f1 =====
 NUC1 13C
 P1 9.38 usec
 PL1 0.00 dB
 SFO1 100.6228298 MHz

==== CHANNEL f2 =====
 CPDPRG2 waltz16
 NUC2 1H
 PCPD2 90.00 usec
 PL2 0.00 dB
 PL12 16.10 dB
 PL13 19.00 dB
 SFO2 400.1316005 MHz

F2 - Processing parameters
 SI 32768
 SF 100.6128141 MHz

WDW no
 SSB 0
 LB 0
 GB 0
 PC 1.40





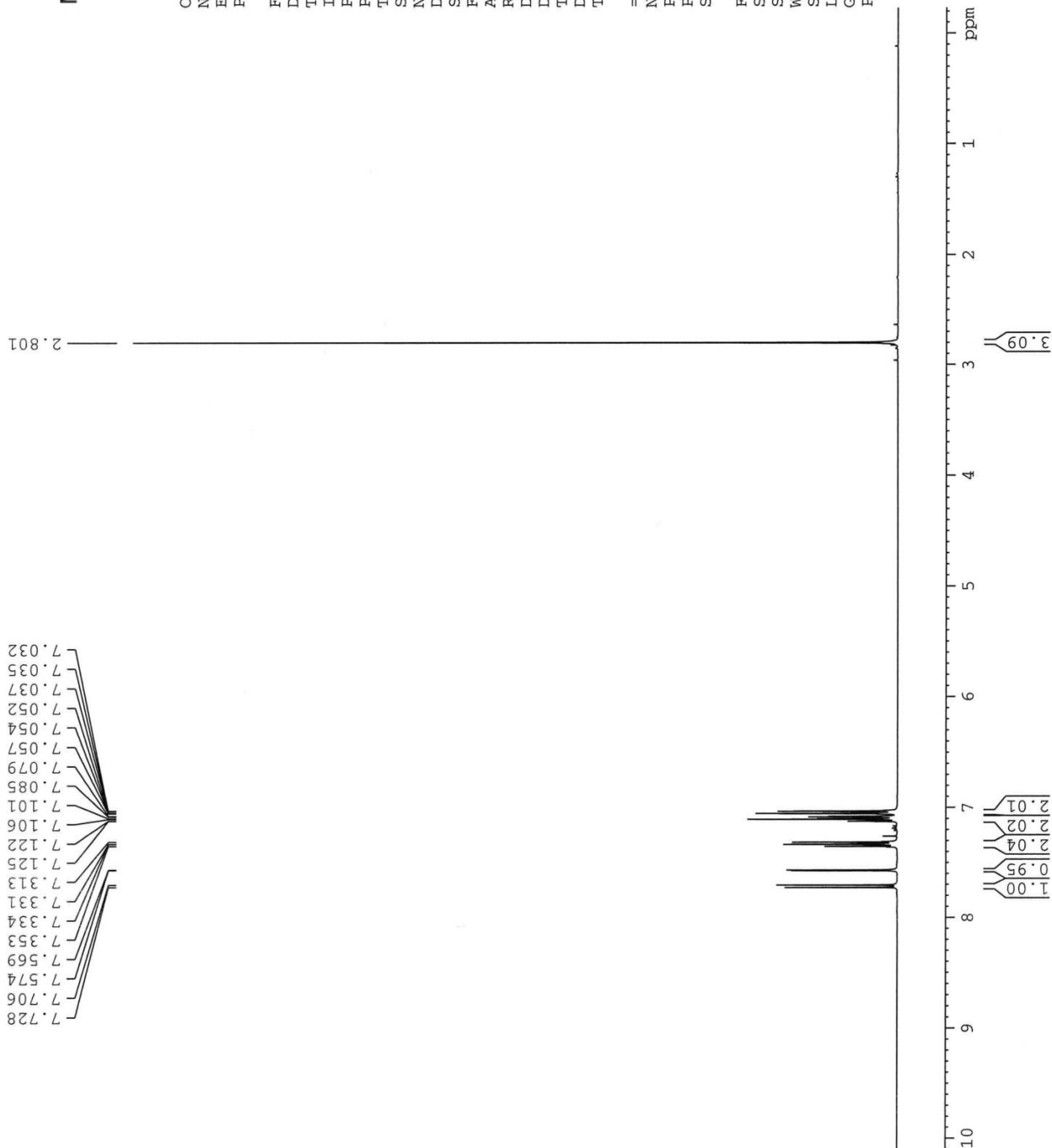
3i

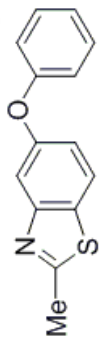
Current Data Parameters
 NAME SU2-88
 EXNO 1
 PROCNO 1

F2 - Acquisition Parameters
 Date_ 20110506
 Time 10.03
 INSTRUM spect
 PROBHD 5 mm QNP 1H/13
 PULPROG zg30
 TD 65536
 SOLVENT CDC13
 NS 8
 DS 2
 SWH 8278.146 Hz
 FIDRES 0.126314 Hz
 AQ 3.9584243 sec
 RG 322.5
 DW 60.400 usec
 DE 6.00 usec
 TE 300.0 K
 D1 1.00000000 sec
 TD0 1

==== CHANNEL f1 =====
 NUC1 1H
 P1 14.00 usec
 PL1 0.00 dB
 SFO1 400.1324710 MHz

F2 - Processing parameters
 SI 65536
 SF 400.1300095 MHz
 WDW no
 SSB 0
 LB 0.00 Hz
 GB 0
 PC 1.00





3i



Current Data Parameters
 NAME SU2-88C
 EXPNO 1
 PROCNO 1

F2 - Acquisition Parameters
 Date_ 20110506
 Time 10.11
 INSTRUM spect
 PROBHD 5 mm QNP 1H/13
 PULPROG zgpg30
 TD 65536
 SOLVENT CDCl3
 NS 128
 DS 4
 SWH 23980.814 Hz
 FIDRES 0.365918 Hz
 AQ 1.3664756 sec
 RG 5792.6
 DW 20.850 usec
 DE 6.00 usec
 TE 683.2 K
 D1 2.0000000 sec
 d11 0.0300000 sec
 DELTA 1.89999998 sec
 TD0 1

==== CHANNEL f1 =====
 NUC1 13C
 P1 9.38 usec
 PL1 0.00 dB
 SFO1 100.6228298 MHz

==== CHANNEL f2 =====
 CPDPRG2 waltz16
 NUC2 1H
 PCPD2 90.00 usec
 PL2 0.00 dB
 PL12 16.10 dB
 PL13 19.00 dB
 SFO2 400.1316005 MHz

F2 - Processing parameters
 SI 32768
 SF 100.6127619 MHz
 MDW no
 SSB 0
 LB 0.00 Hz
 GB 0
 PC 1.40

