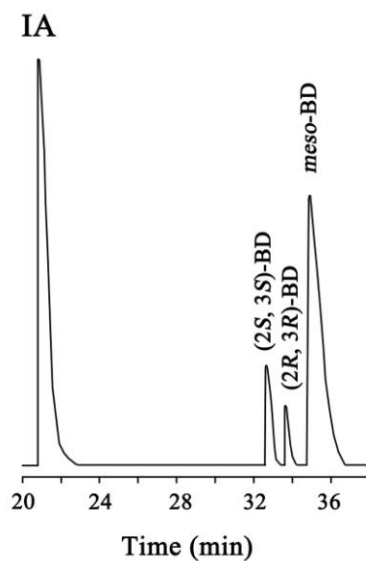


1



2

3 **Figure S3. GC analysis of fermented products by *E. cloacae* subsp. *dissolvens***

4 **SDM.** IA: isoamyl alcohol was used as the internal standard. The ratio of the three

5 stereoisomers of BD was analyzed by GC (Agilent GC6820) using a fused silica

6 capillary column (Supelco Beta DEXTM 120, inside diameter, 0.25 mm; length, 30 m).

7 The operating conditions were as follows: nitrogen was used as the carrier gas; the

8 injector temperature and detector temperature were both 280°C; the column oven was

9 maintained at 40°C for 3 min and then programmed to increase to 80°C at a rate of

10 1.5°C min⁻¹; the temperature was then raised to 86°C at a rate of 0.5°C min⁻¹ and

11 finally to 200°C at a rate of 30°C min⁻¹; and the injection volume was 3 µl.