

Supplemental data

Figure S2

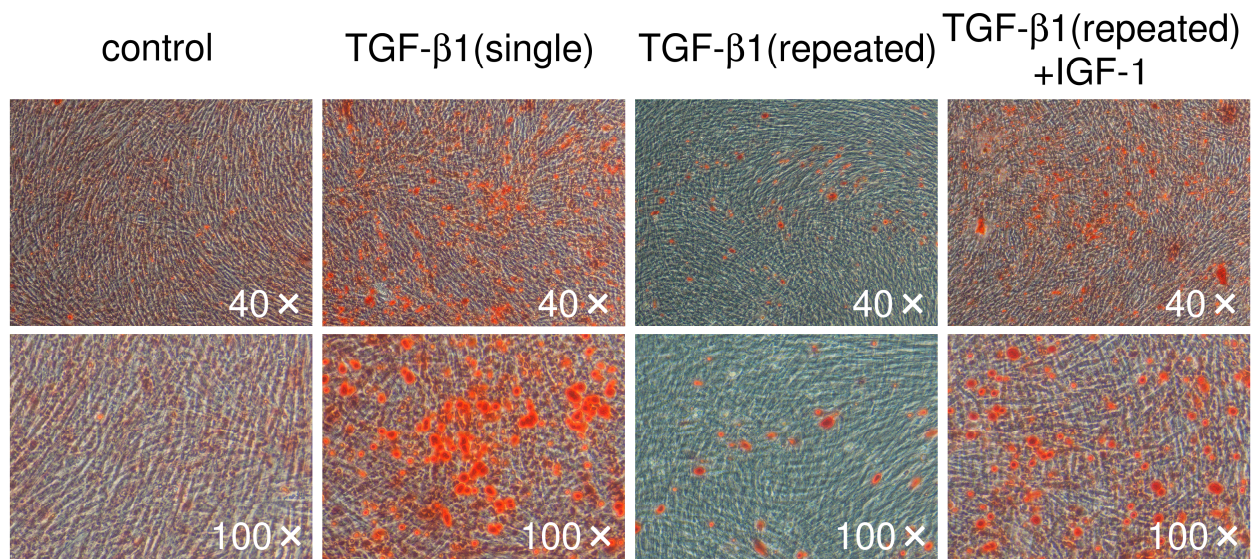


Figure S2.

Repeated TGF-β1 administration inhibits mineralization in HPDL cells. HPDL cells were seeded at a density of 1×10^5 cells/cm². HPDL cells were cultured in OBM in the presence of 5% FBS for 14 days with or without other factors as indicated. The concentration of each factor was as follows, TGF-β1 (1 ng/ml) and IGF-1 (200 ng/ml). The mineralized matrix was stained with alizarin red for calcium. Stained cells were photographed. A single TGF-β1 administration induced mineralization, while cells with repeated TGF-β1 administration revealed marked reduction of mineralization and was recovered by IGF-1 addition.