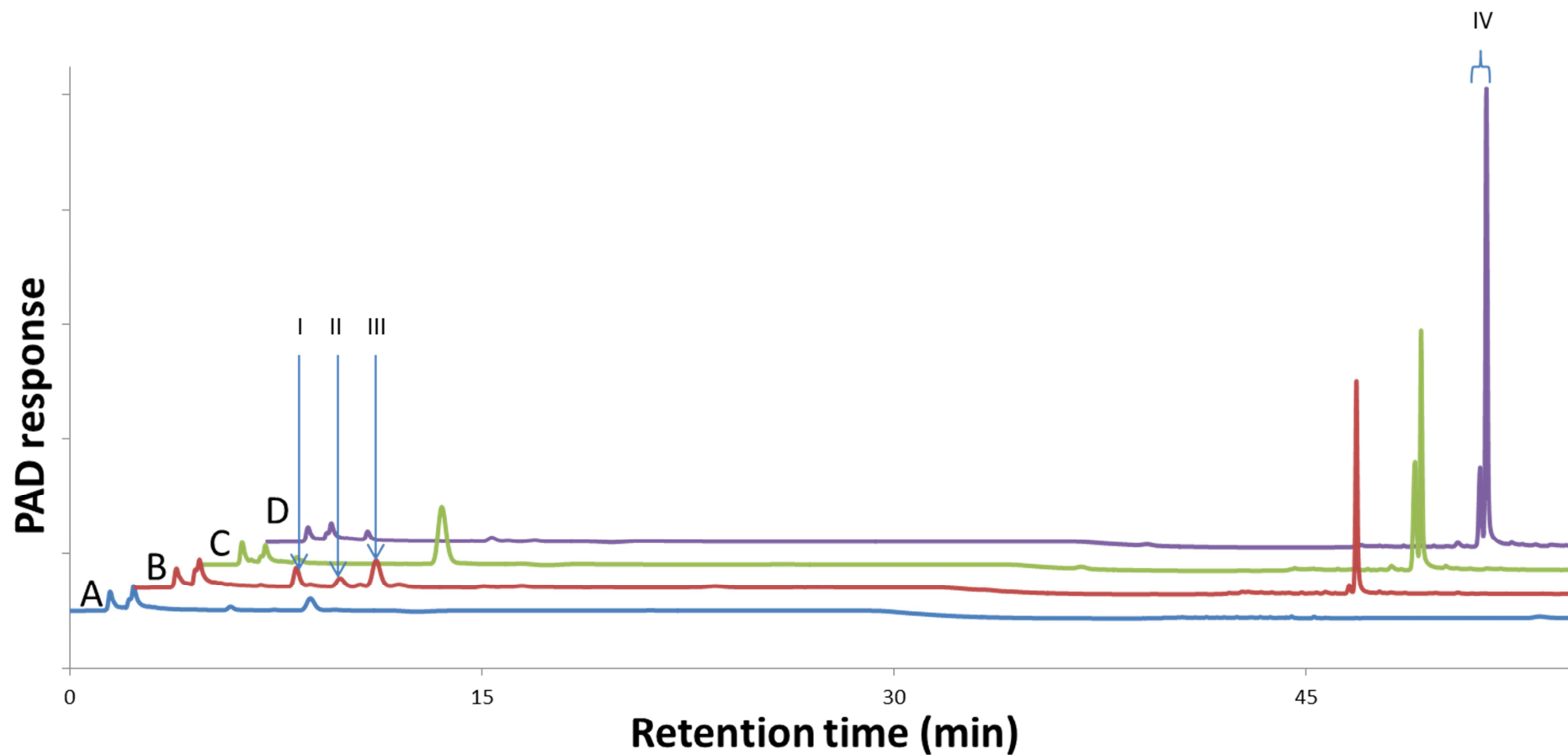


Supplemental figure S2



High performance anion exchange chromatography of acid hydrolysed extracellular polysaccharide of *Pseudomonas syringae* pv. *aesculi* PD4818 cultivated without (A) and with salt stress (B) and acid hydrolysed alginate from *Laminaria hyperborea* (C) and *Macrocystis pyrifera* (D). Each subsequent plot has been shifted 2.4 minutes for clarity. The marked peaks represent: **I**, Rhamnose; **II**, Unidentified compound; **III**, Glucose; **IV**, Degradation pattern of alginate (guluronic acid and mannuronic acid).