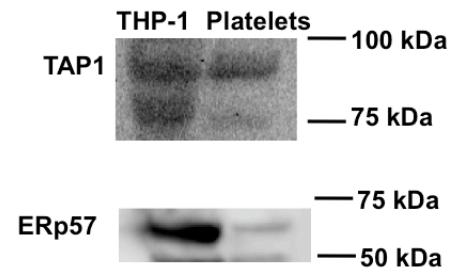
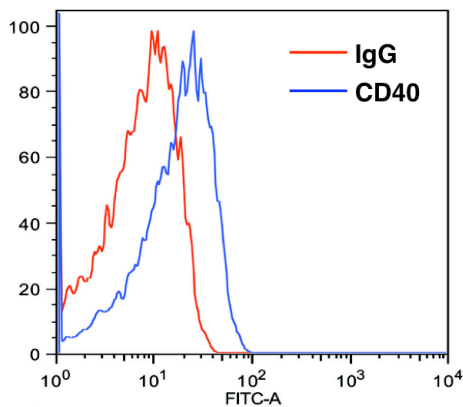


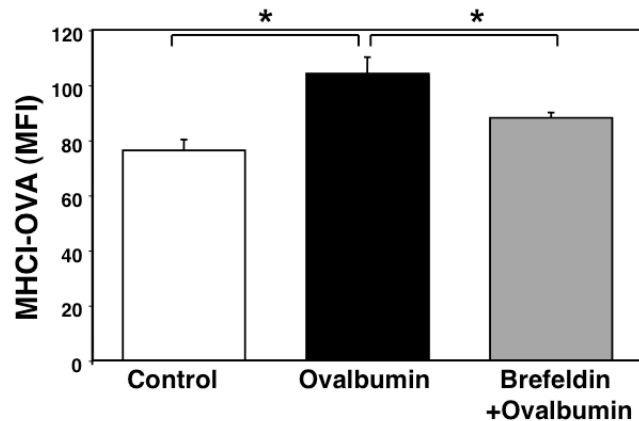
**S1. Platelets do not express MHCII.** Human platelets were incubated with isotype control IgG or anti-MHC antibody (n=4 ± S.D.\*P<0.01 vs IgG) .



**S2. Platelets express antigen processing molecules.** THP-1 cells or human platelets were immunoblotted for TAP1 and ERp57.



**S3. Platelets express co-stimulatory molecules.** Mouse platelets were incubated with control IgG or anti-CD40 antibody. Mouse platelets express CD40 (representative).



**Figure S4. Brefeldin A significantly reduced ovalbumin processing and presentation.** Mouse platelets were incubated with vehicle or 10 µg/mL of brefeldin A prior to addition of 300 µg/mL of ovalbumin, and thrombin stimulation. MHC I-OVA complex was determined 4 hrs later by flow cytometry (n=4 ± S.D. \*P<0.01).