

Supplementary Data

Kir6.2 primers:

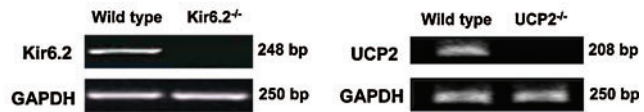
sense 5' - TAG GCC AAG CCA GTG TAG TG -3';

antisense 5' - GTG GTG AAC ACA TCC TGC AG -3';

UCP2 primers:

sense 5' - GAC TGC CTT GGG AAA AGC GCC T -3';

antisense 5' - CTC AGA AAG GTG CCT CCC GA -3'.



SUPPLEMENTARY FIG. S1. The expressions of Kir6.2 and UCP2 in the midbrain of wildtype, *Kir6.2*^{-/-} and *Ucp2*^{-/-} mice.