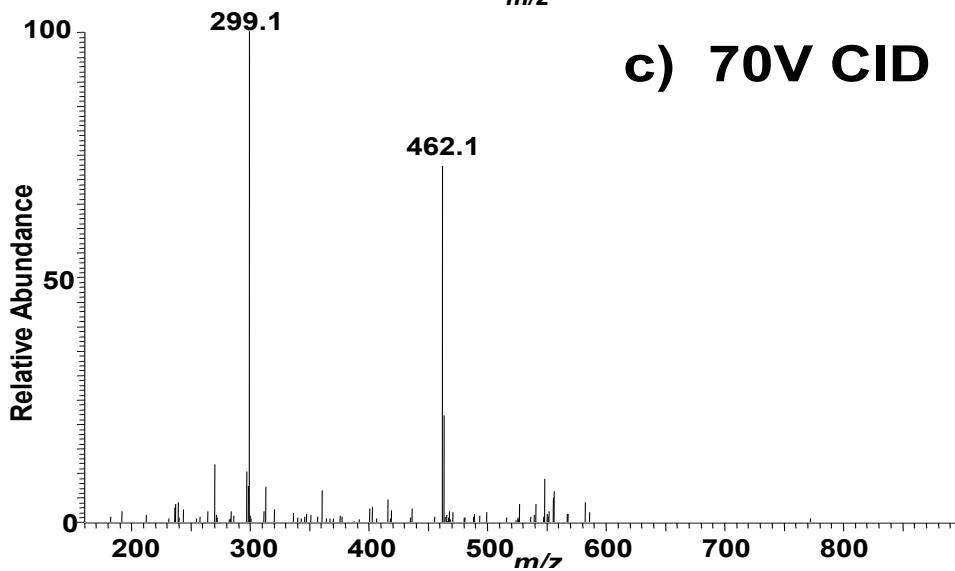
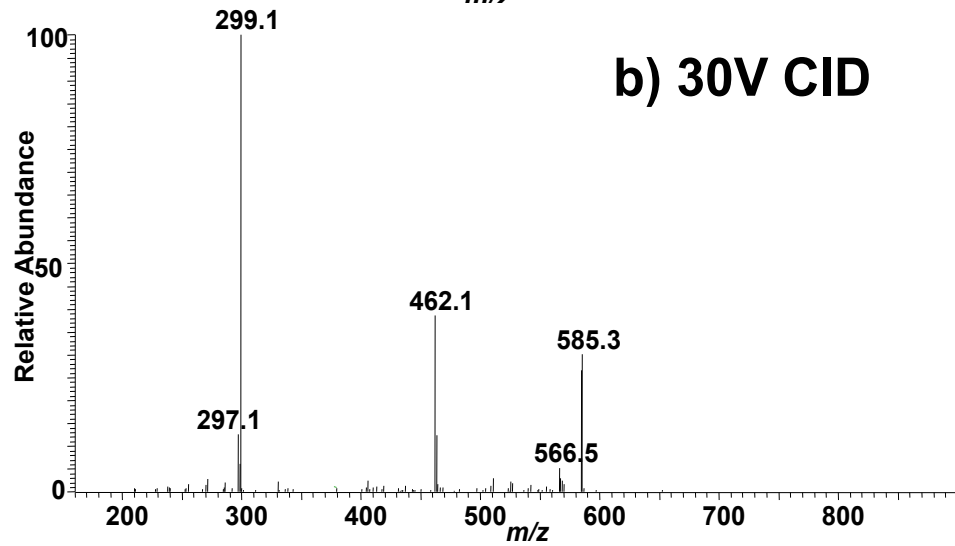
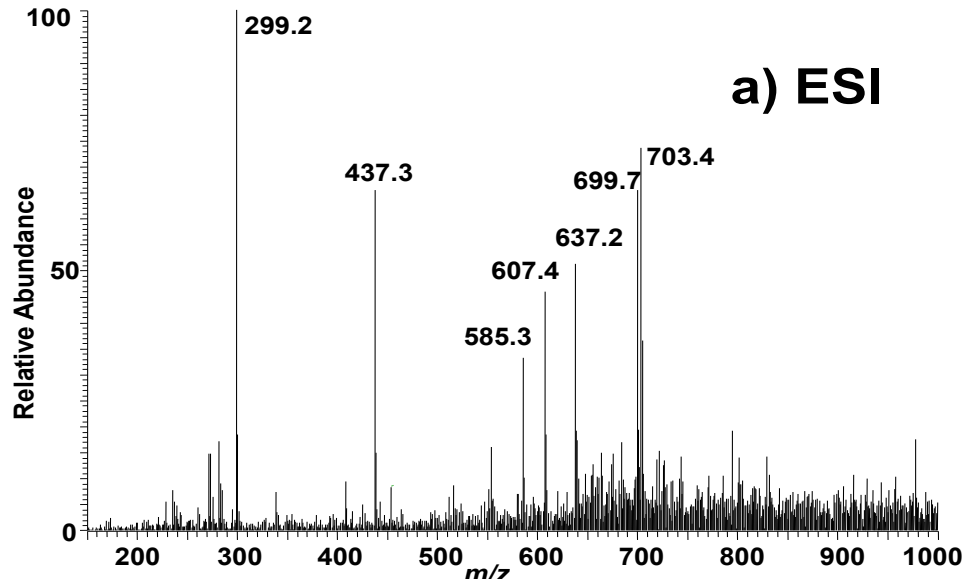


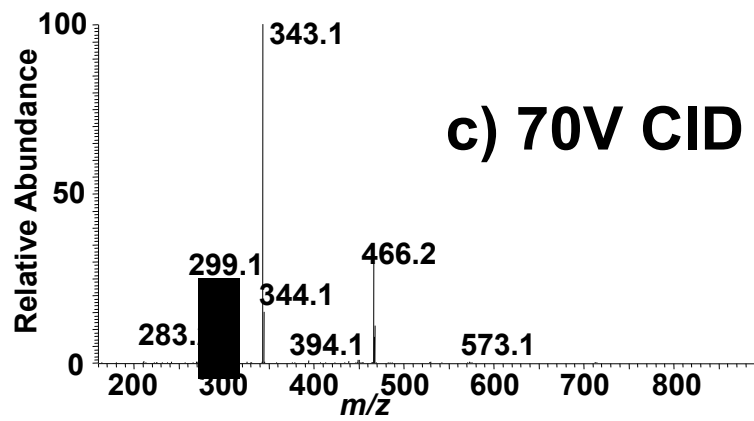
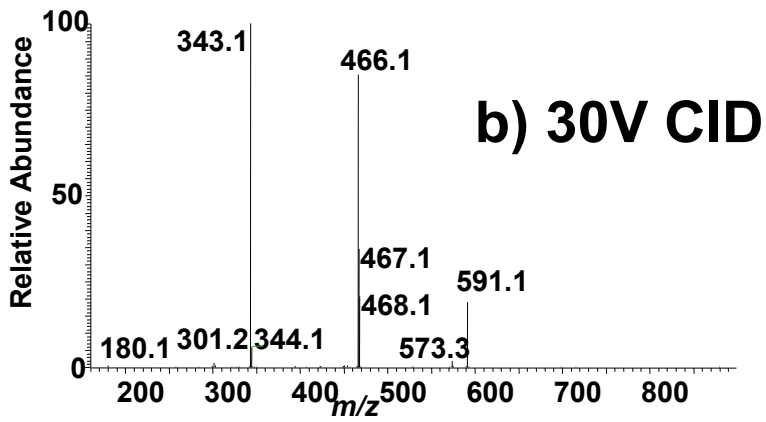
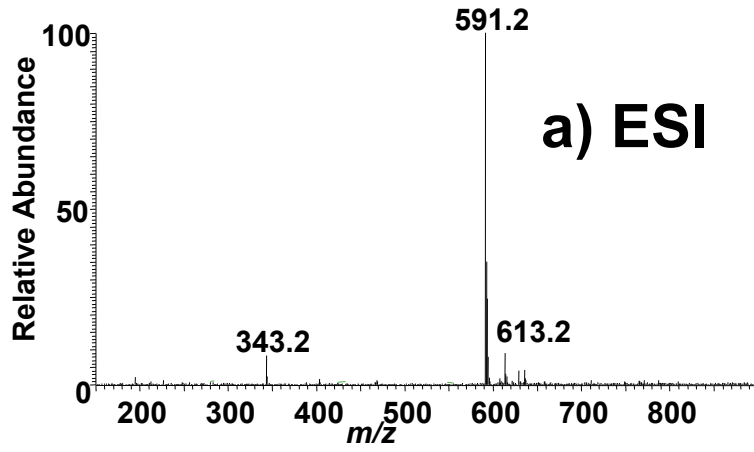
Supplementary Data Figure S-1. Positive ion ESI ion trap mass spectra of bilirubin. A) Full scan; B) CID at 30% RF resonance ejection energy; C) CID at 70% RF resonance ejection energy.

Supplementary Data Figure S-2. Positive ion ESI ion trap mass spectra of *i*-urobilin. A) Full scan; B) CID at 30% RF resonance ejection energy; C) CID at 70% RF resonance ejection energy.

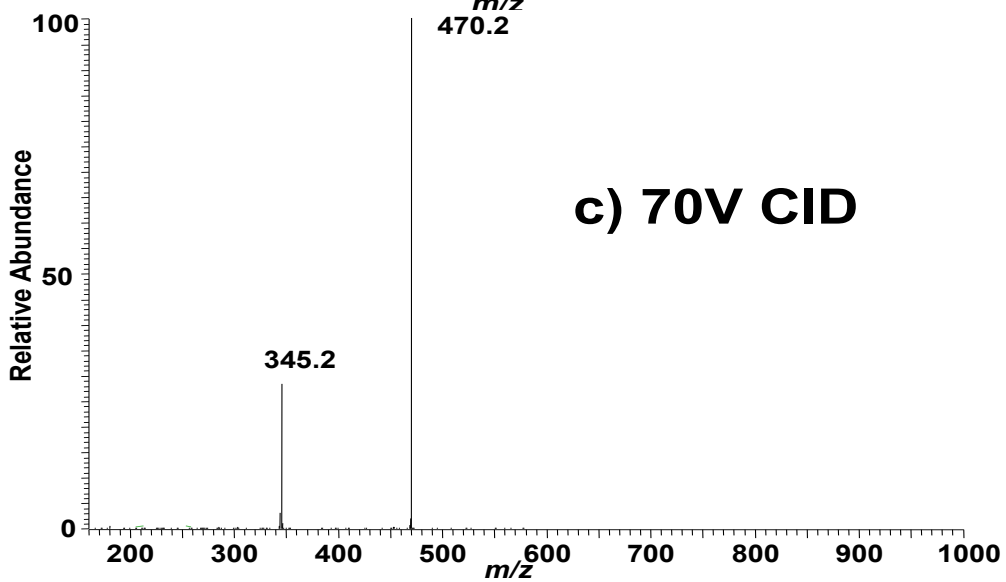
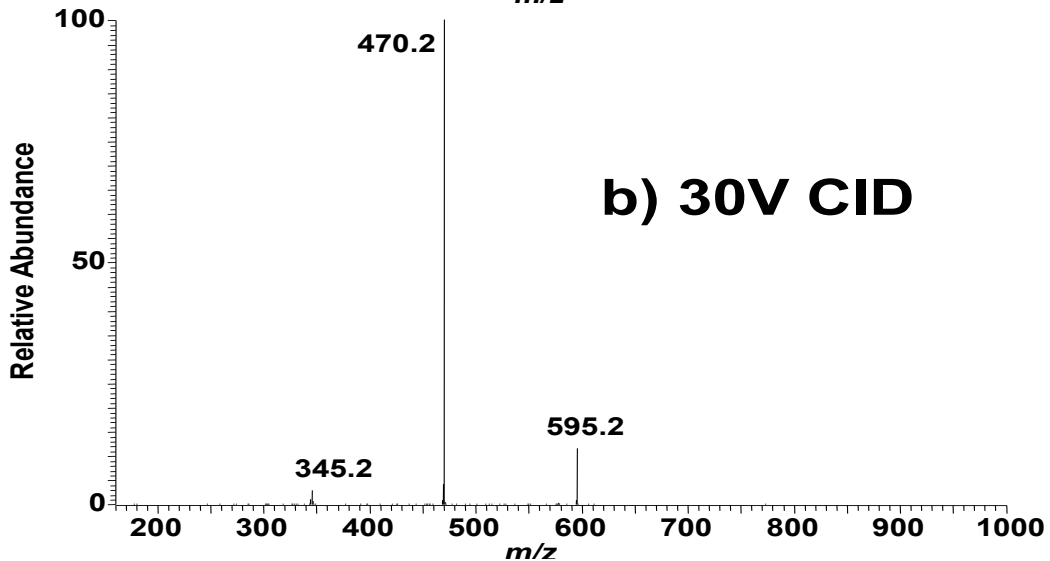
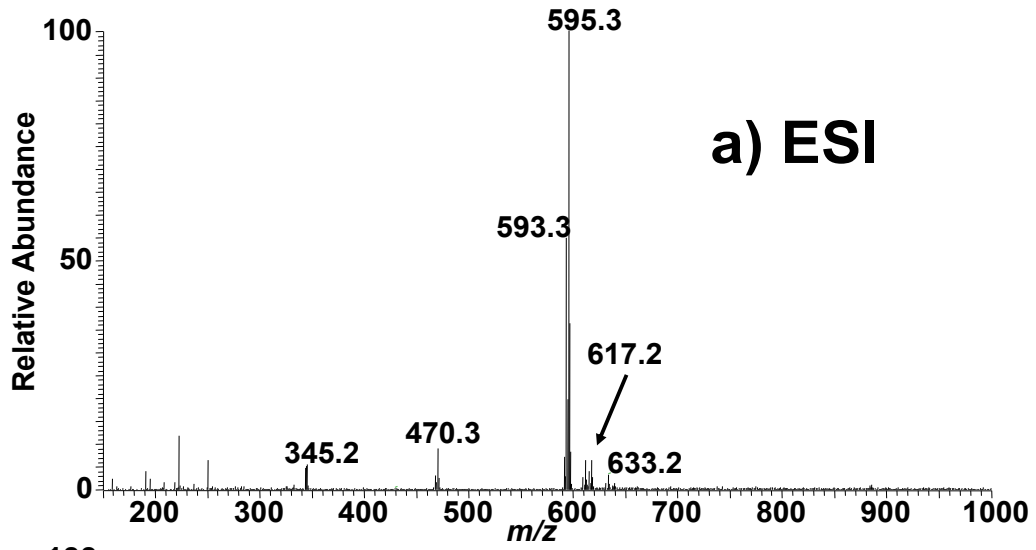
Supplementary Data Figure S-3. Positive ion ESI ion trap mass spectra of stercobilin. A) Full scan; B) CID at 30% RF resonance ejection energy; C) CID at 70% RF resonance ejection energy.



Supplementary Figure S-1.



Supplementary Figure S-2.



Supplementary Figure S-3.