

Supporting Information

Bhatta et al. 10.1073/pnas.1118704109

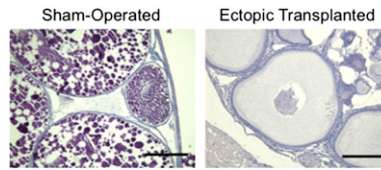


Fig. S1. At 90 d (50 d after operation), histological analysis of the ovary in sham-operated and ectopically transplanted females. In sham-operated females, the ovary contained mature eggs, similar to normal female tilapia (nonsurgical operation). In contrast, the ectopic ovary contained only early vitellogenic oocytes. (Scale bar: 50 μ m.)

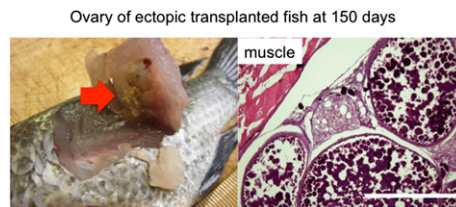


Fig. S2. Histological analysis of ovaries in an ectopically transplanted female at 150 d (110 d after operation). These ovaries contained mature eggs, of \sim 1.6 mm average size. The normal mature tilapia female eggs are 1.6 mm on average. (Scale bar: 500 μ m.)

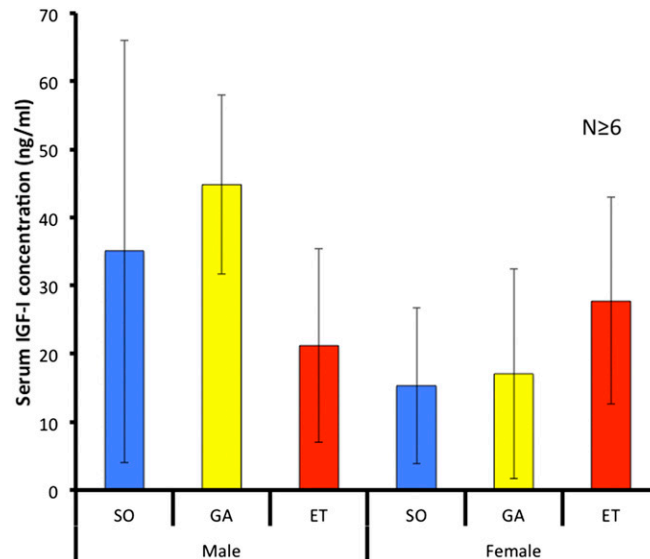


Fig. S3. Measurement of serum insulin-like growth factor I levels by ELISA. At 90 d, serum levels did not differ significantly among the experimental fish groups. Results are given as mean \pm SEM ($n \geq 6$). ET, ectopically transplanted; GA, gonadectomized; SO, sham-operated.