

Electronic Supplementary Information

Table of contents

Figure S1. Negative-ion ESI mass spectrum of chalinulasterol (1)	2
Figure S2. Positive-ion ESI mass spectrum of chalinulasterol (1)	2
Figure S3. Positive-ion ESI MS/MS spectrum of chalinulasterol (1)	3
Figure S4. ¹ H-NMR spectrum of chalinulasterol (1)	3
Figure S5. COSY spectrum of chalinulasterol (1)	4
Figure S6. HSQC spectrum of chalinulasterol (1) – low-field region	5
Figure S7. HSQC spectrum of chalinulasterol (1) – high-field region	6
Figure S8. HMBC spectrum of chalinulasterol (1)	7
Figure S9. ROESY spectrum of chalinulasterol (1)	8

Chalinosterol #109 RT: 0.57 AV: 1 NL: 3.17E7
T: FTMS - c ESI Full ms [125.00-1000.00]

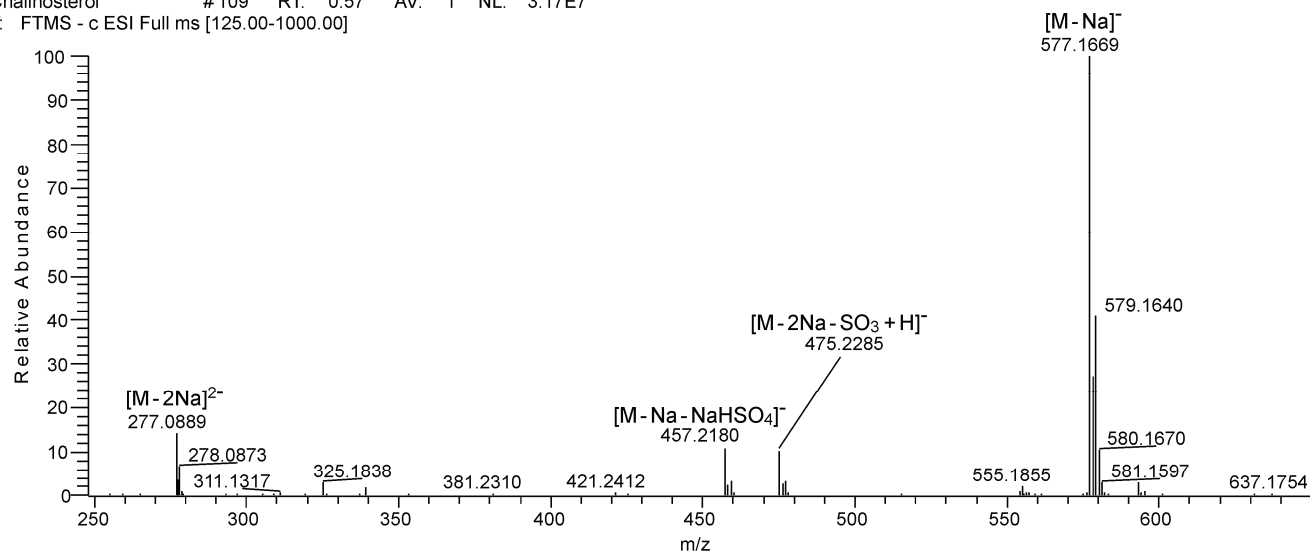


Figure S1. Negative-ion ESI MS spectrum of chalinulasterol (1)

Chalinosterol #135-142 RT: 0.77-0.96 AV: 8 NL: 1.43E6
T: FTMS + p ESI Full ms [150.00-1500.00]

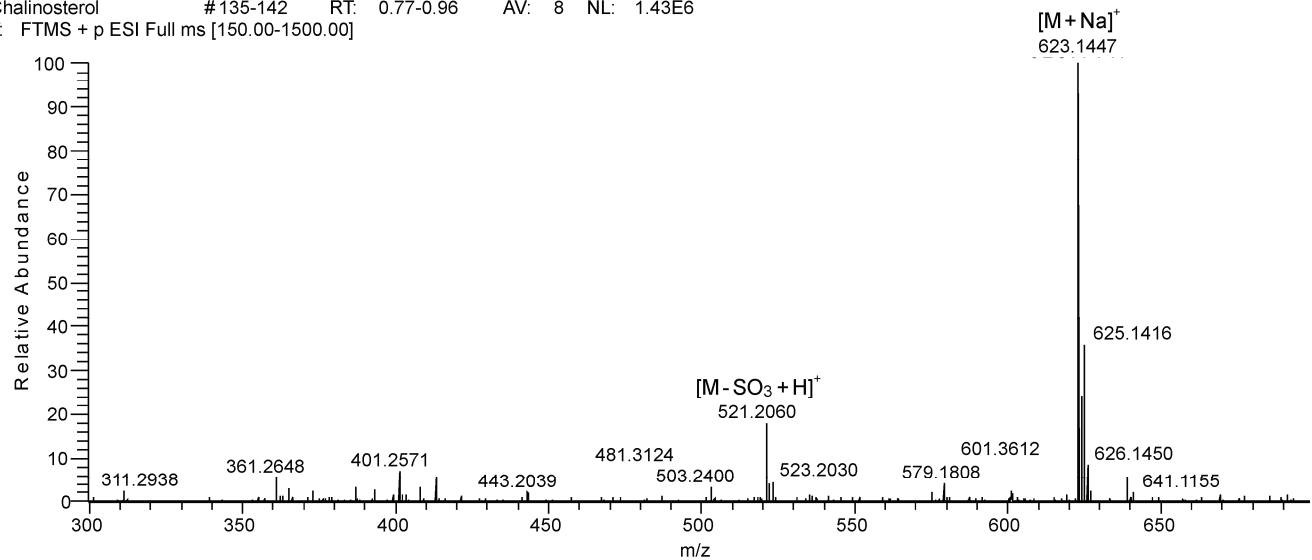


Figure S2. Positive-ion ESI MS spectrum of chalinulasterol (1)

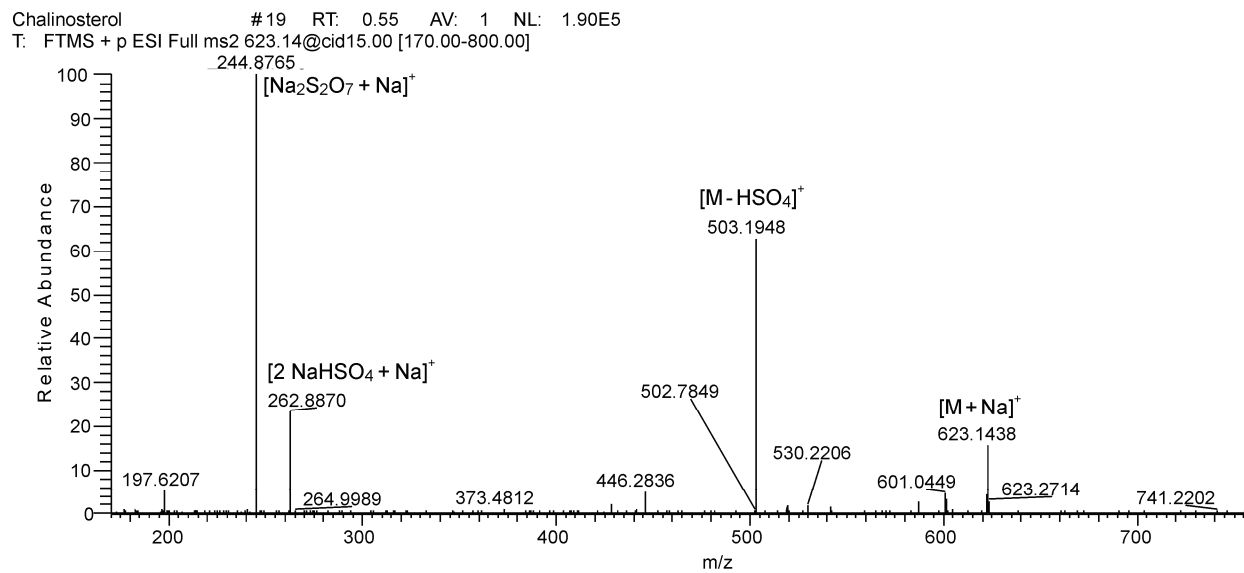


Figure S3. Positive-ion ESI MS/MS spectrum of chalinulasterol (1), parent ion at m/z 623

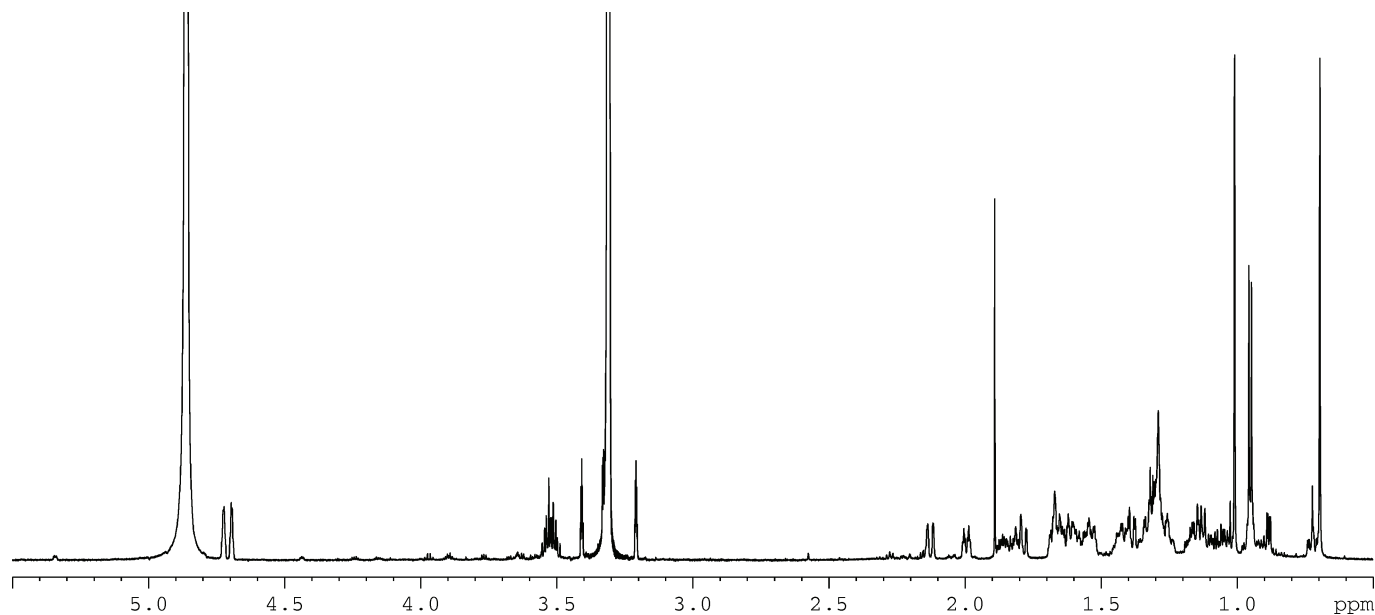


Figure S4. ^1H NMR spectrum of chalinulasterol (1) (CD_3OD , 700 MHz)

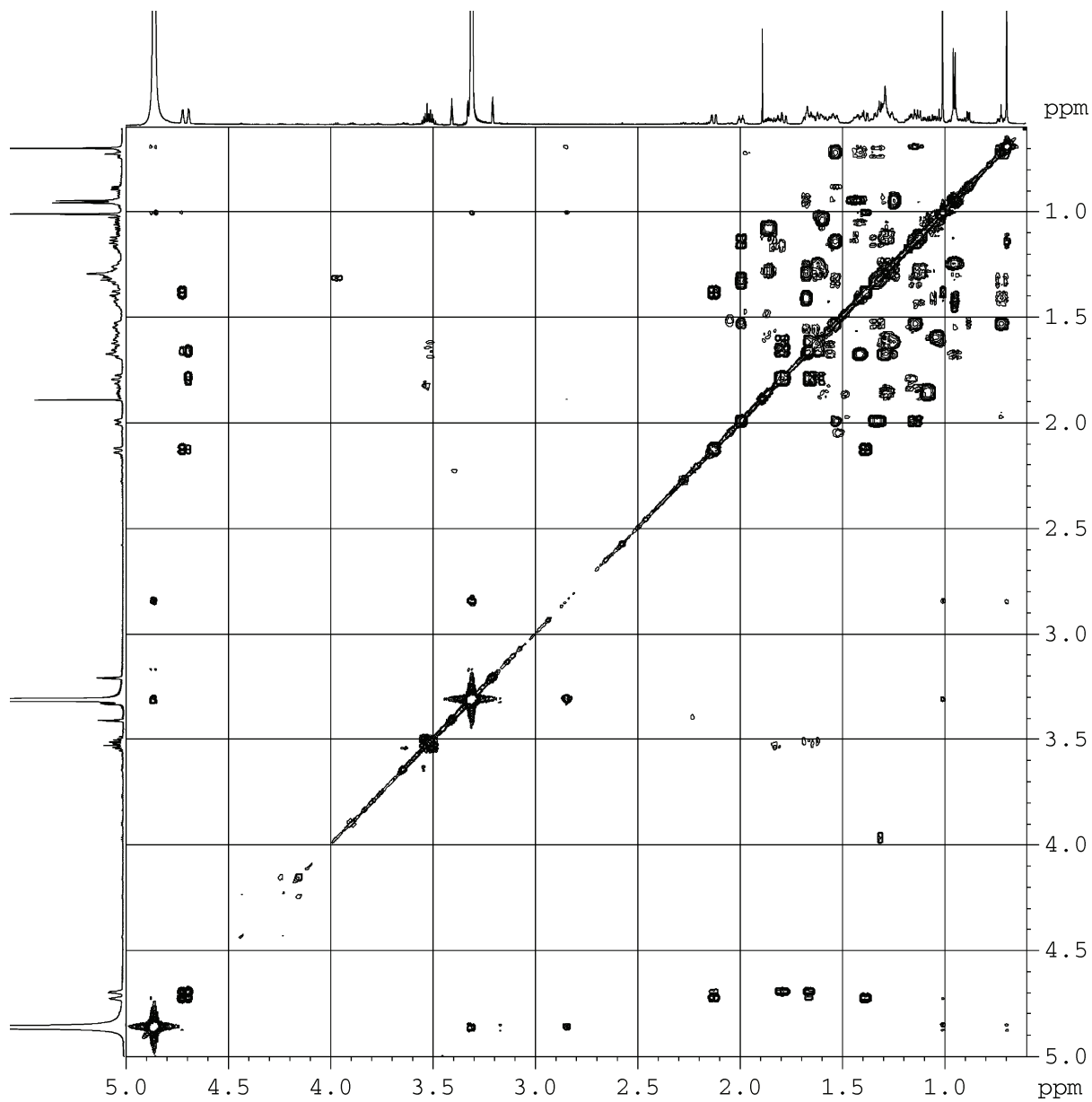


Figure S5. COSY spectrum of chalinulasterol (**1**) (CD_3OD , 700 MHz)

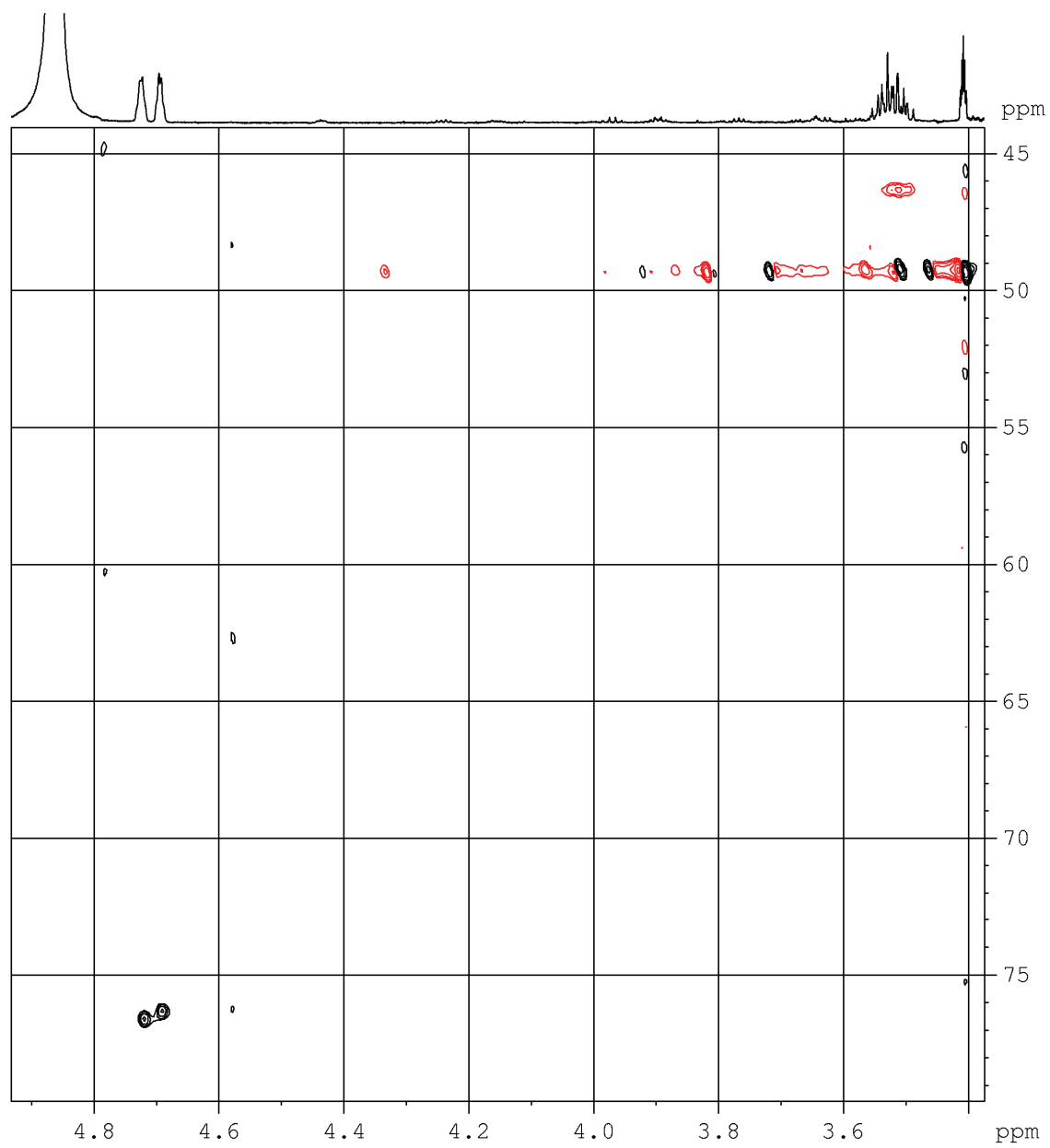


Figure S6. HSQC spectrum of chalinulasterol (**1**) (CD₃OD, 700 MHz) – low-field region

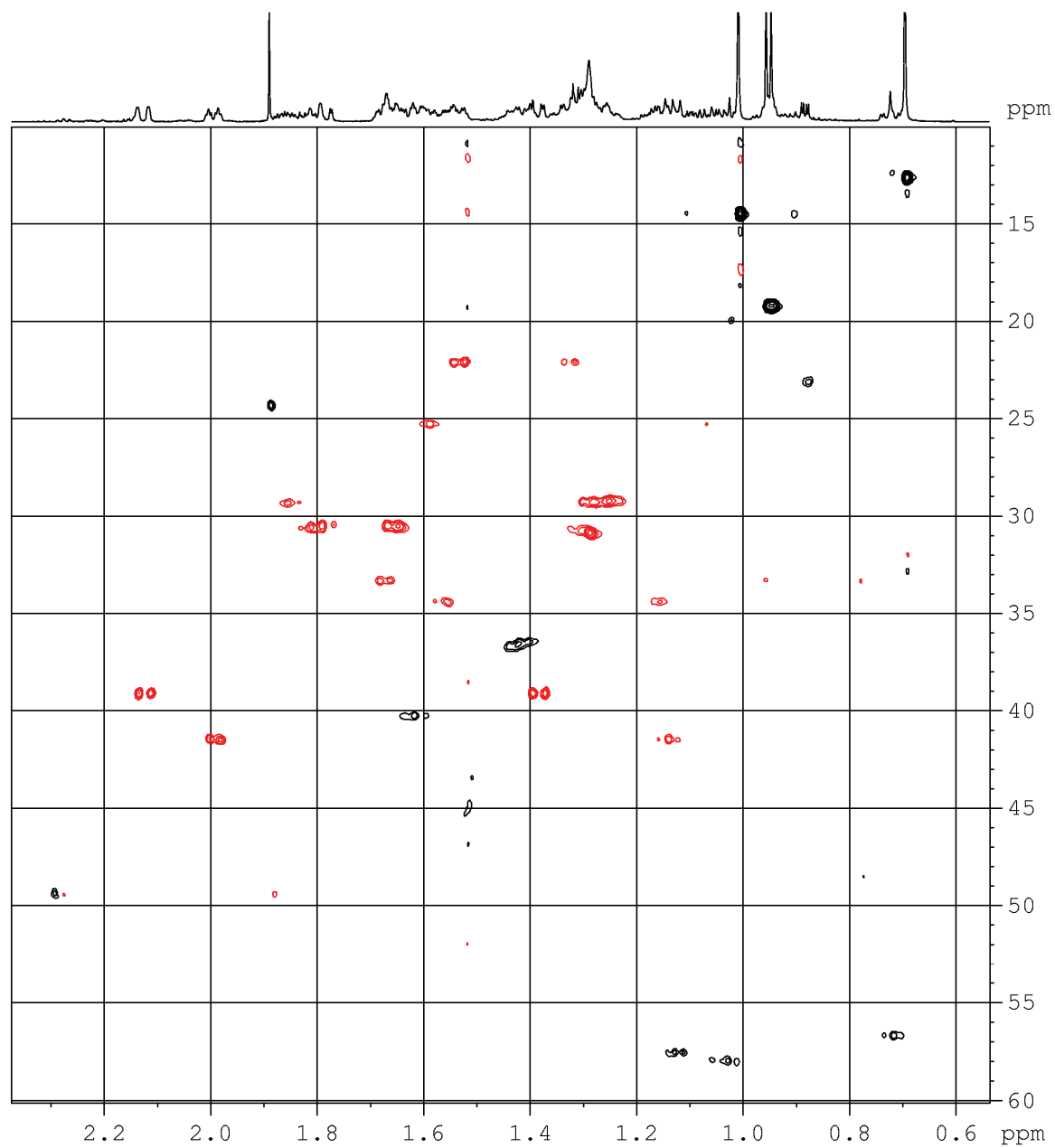


Figure S7. HSQC spectrum of chalinulasterol (**1**) (CD₃OD, 700 MHz) – high-field region

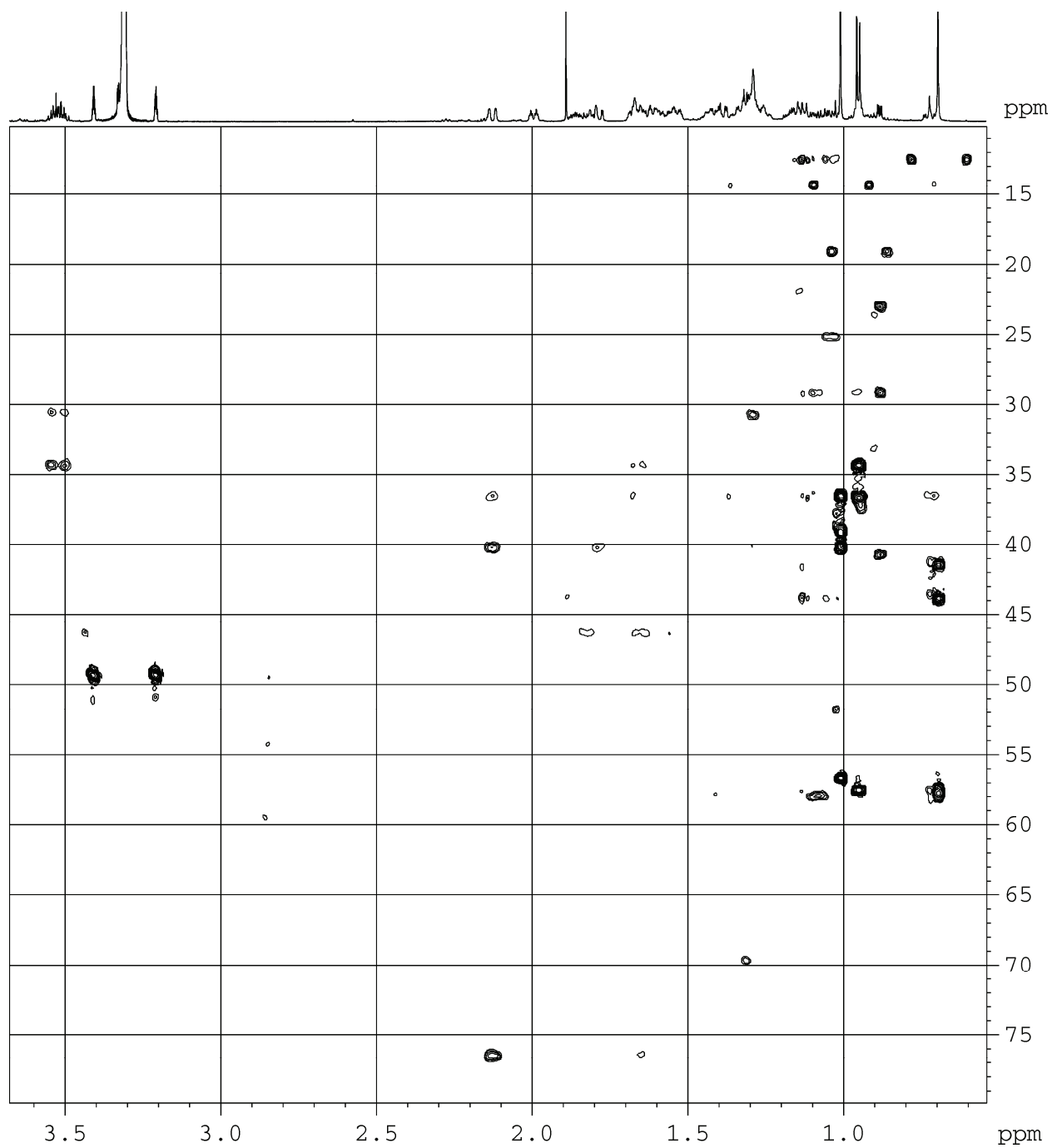


Figure S8. HMBC spectrum of chalinulasterol (**1**) (CD₃OD, 700 MHz)

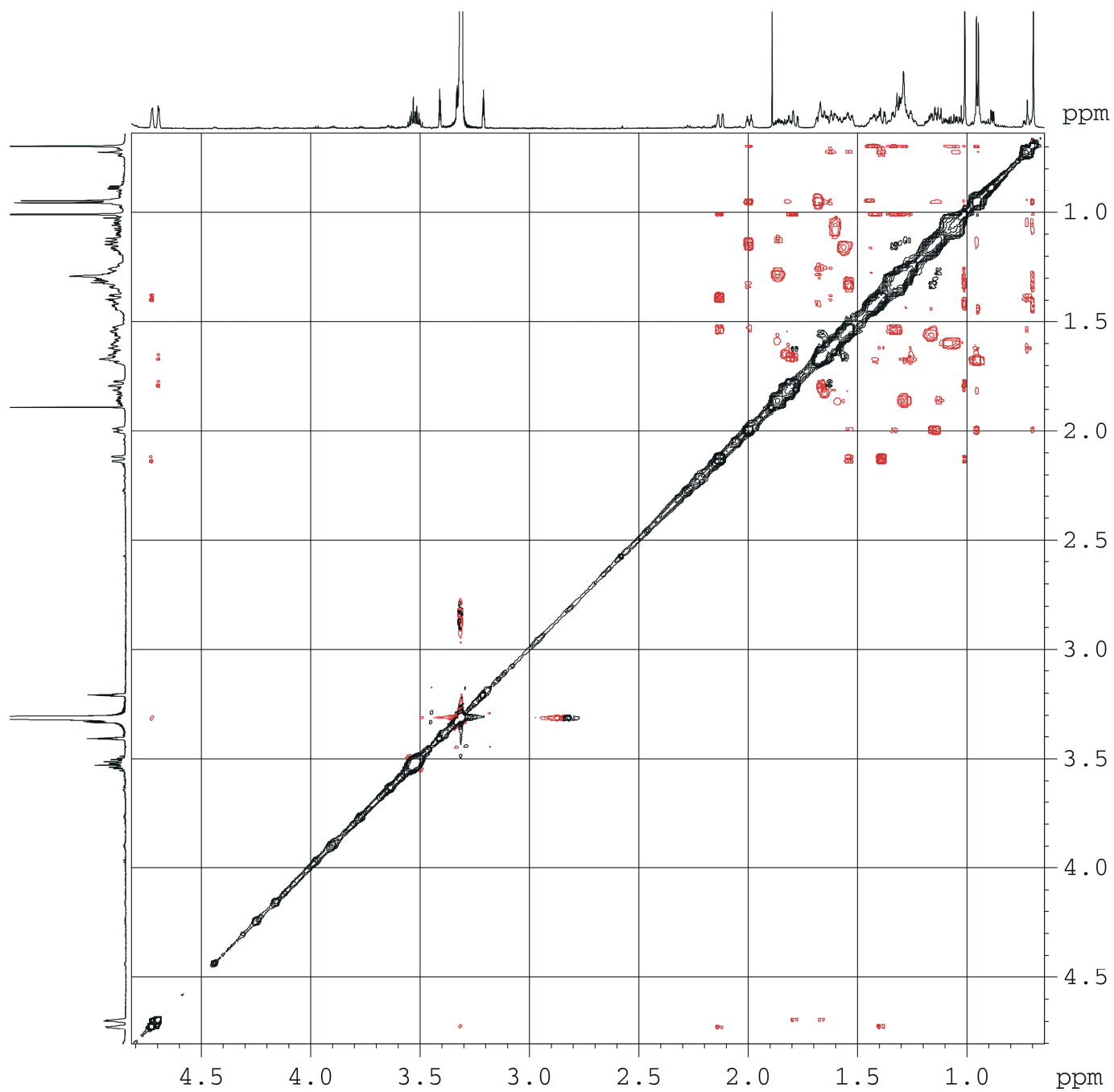


Figure S9. ROESY spectrum of chalinulasterol (**1**) (CD_3OD , 700 MHz)