

## **SUPPLEMENTARY FIGURE LEGENDS**

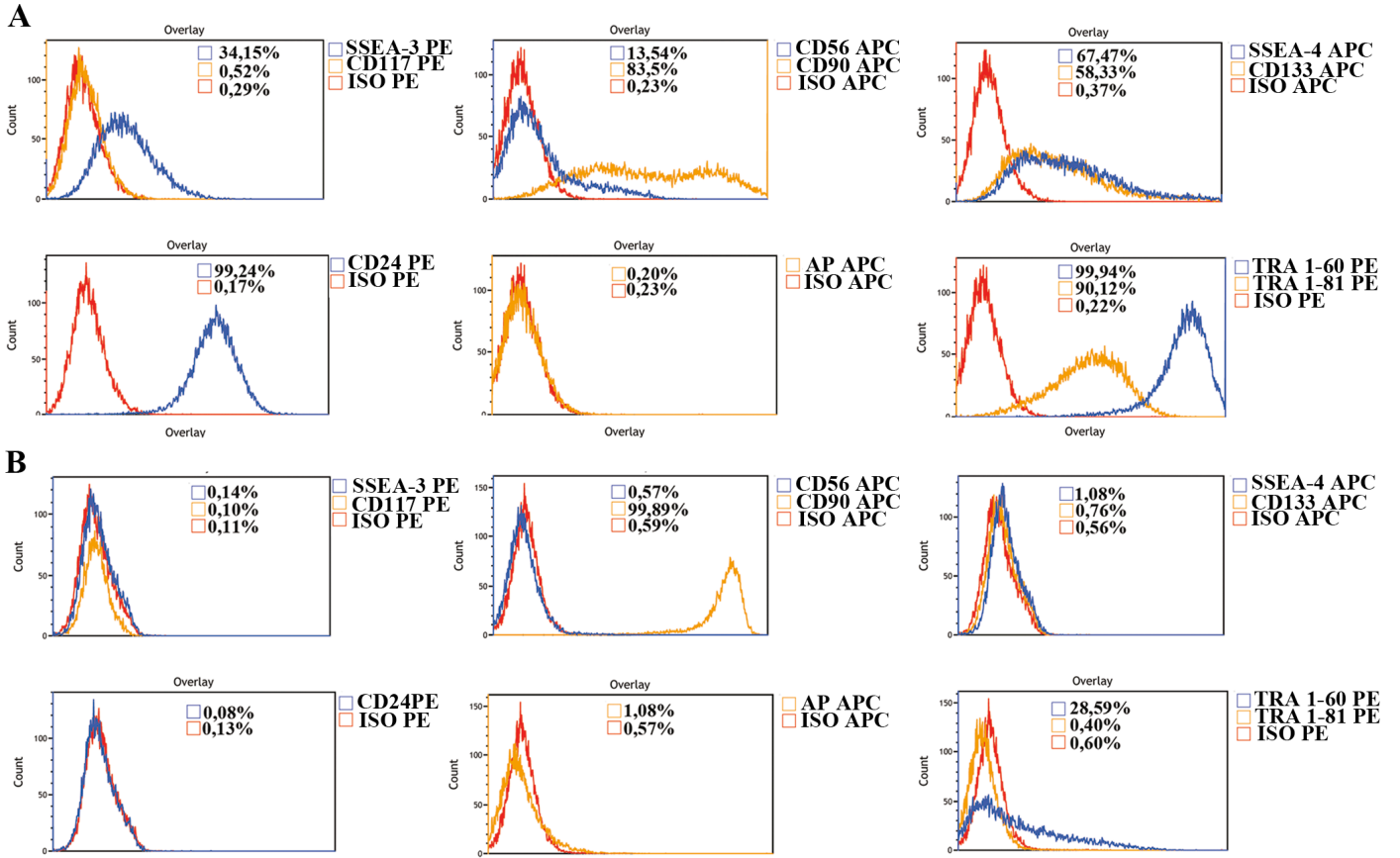
**Supplementary Figure 1.** Flow cytometry analysis of primary renal proximal tubular cells (A) and unrelated somatic fibroblasts samples (B) for selected renal markers.

**Supplementary Figure 2.** Immunofluorescence analysis of kidney sections for specific renal markers. Alpha Anti Trypsin (aAT) and Fructose-1,6-bisphosphatase (FBPase) are enzymatic markers. EMA and CD13 (OCCDN) are adherents junction makers. Scale bars 100 mm.

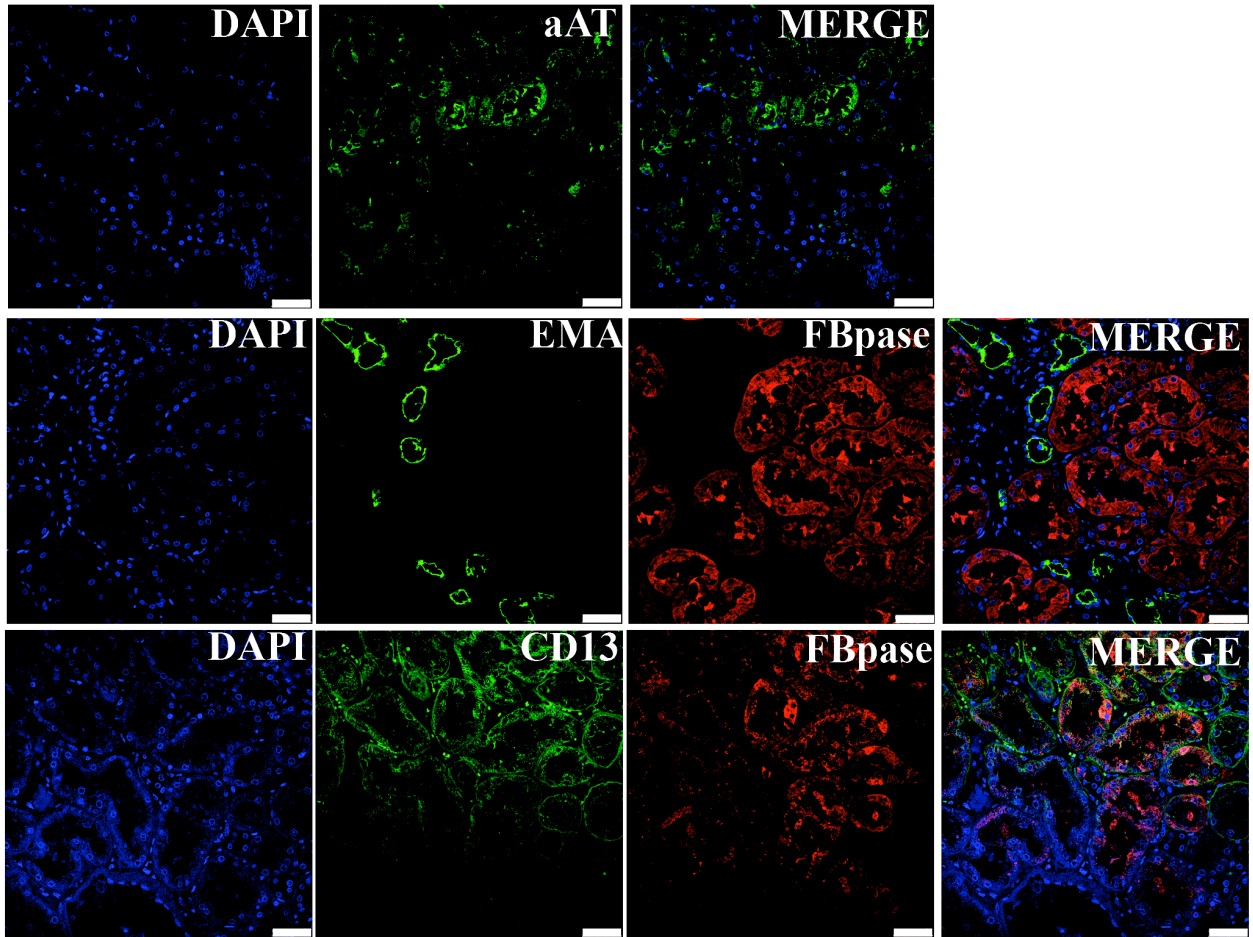
**Supplementary Figure 3.** Characterization of pt-iPS cell lines. pt-iPS-4F#1 cell line after transduction with OSKM retroviruses, express typical pluripotency markers including SSEA-4, SSEA-3, TRA-1-60, TRA-1-81 and the transcription factors OCT4, SOX2 and NANOG whereas expression of the Orange fluorescence protein, indicative of transgene expression, was not detected. Underlying fibroblasts provide a negative control. Scale bars of 100 mm.

**Supplementary Figure 4.** Schematic representation of the OCT4VP16SOX2 tricistronic retrovirus.

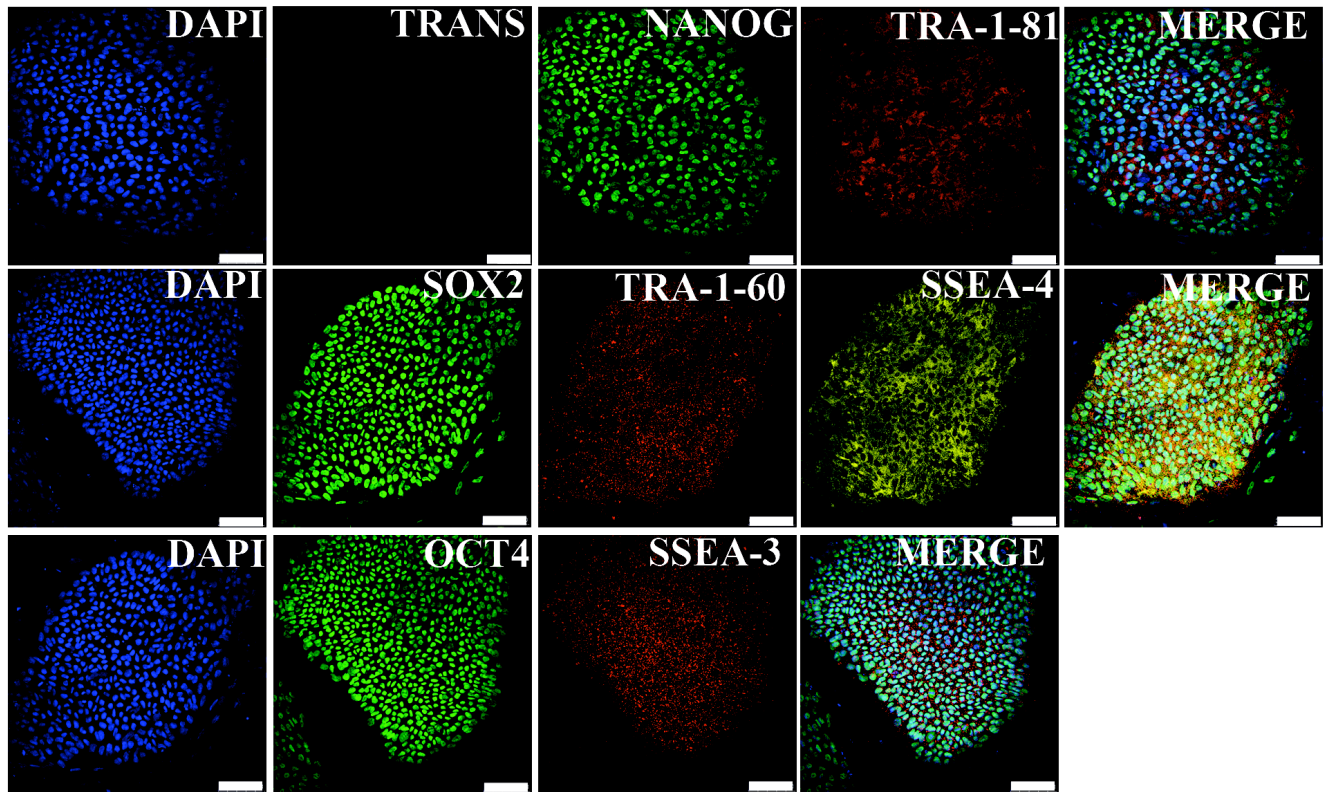
# Supplementary Figure S1



Supplementary Figure S2



Supplementary Figure S3



Supplementary Figure S4

