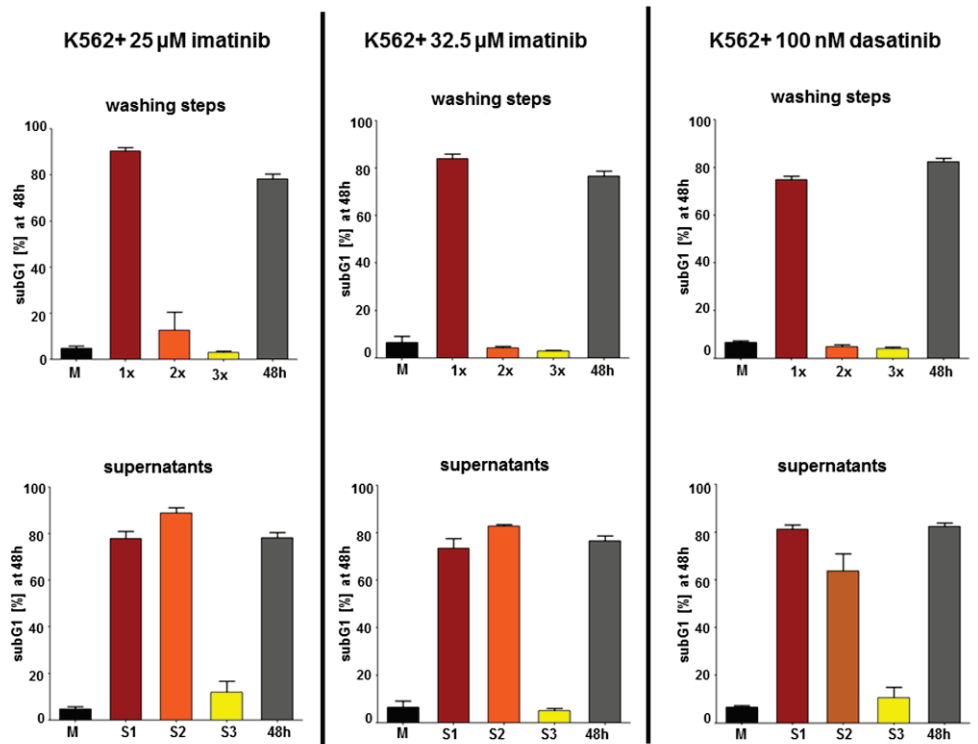


Figure S3

(A)



(B)

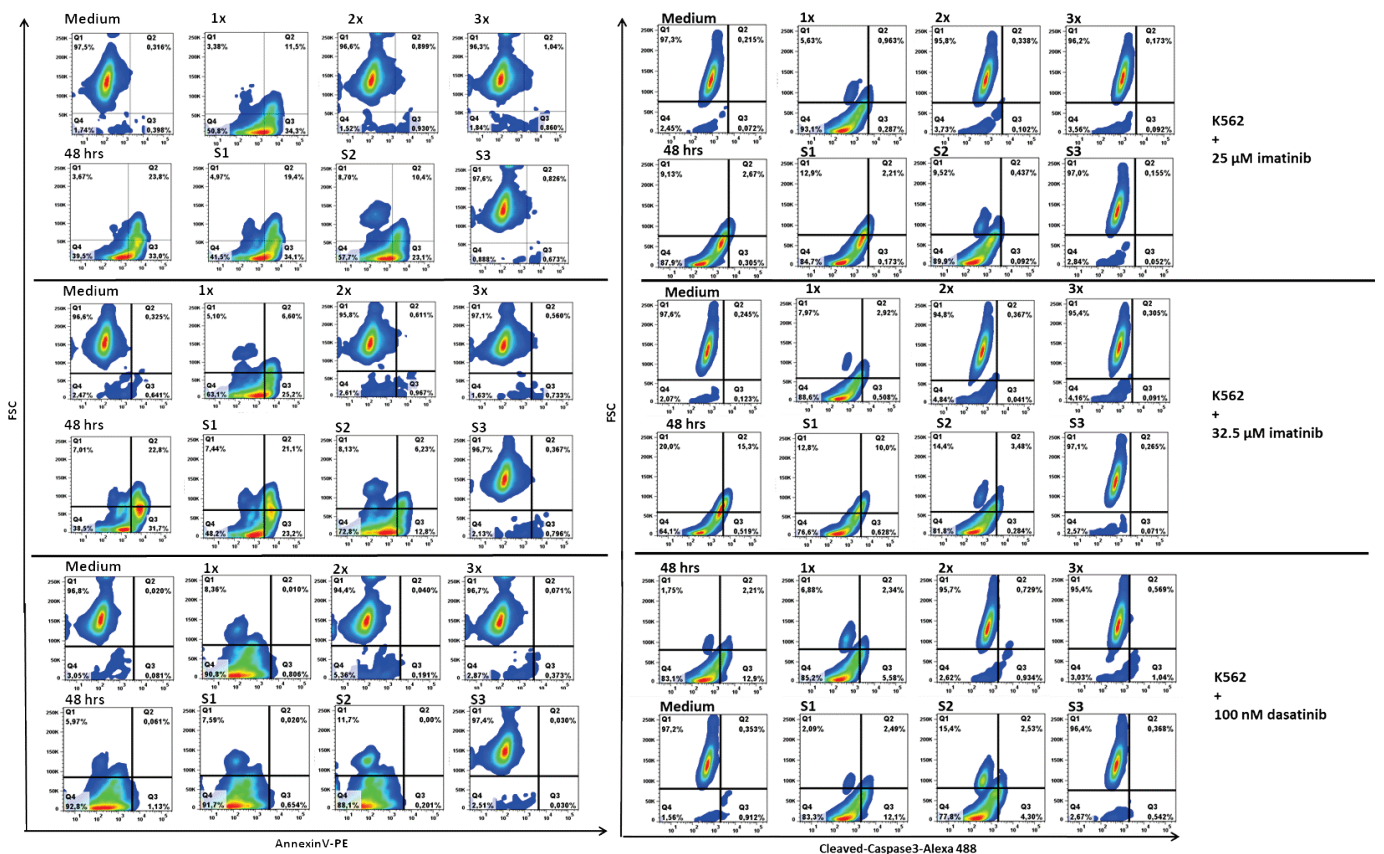


Figure S3: Repetitive washing prevents apoptosis in K562 cells –effect of a different wash-out protocol

K562 cells were treated either with imatinib or dasatinib as indicated. To control for the effects of different washing protocols, in this case the wash-out procedure was performed as previously described by Shah et al. 2008. In brief, cells (5×10^4 cells/ml, total volume 2ml for PI staining and 20 ml for AnnexinV and cleaved caspase3 staining) were washed three times with a volume of medium (containing 10% FCS) that consisted of 50% of the volume of the drug exposure. Cells were afterwards replated in fresh medium (+10% FCS) without inhibitor. For repetitive washing procedures under the same conditions, we generally followed the scheme as is depicted in **Figure 1B**.

(A) Results of PI measurement of cells at 48 hours. Three independent experiments were performed and data are presented as mean percentage of cells in subG1 phase +SEM.

(B) FACS measurement of AnnexinV and cleaved caspase3 at 48 hours. The Y-axis represents forward scatter (linear scale) and the X-axis depicts the signal intensity of AnnexinV (left) and cleaved caspase3 (right) on a log-scale. Three independent experiments were performed. One representative experiment is shown.