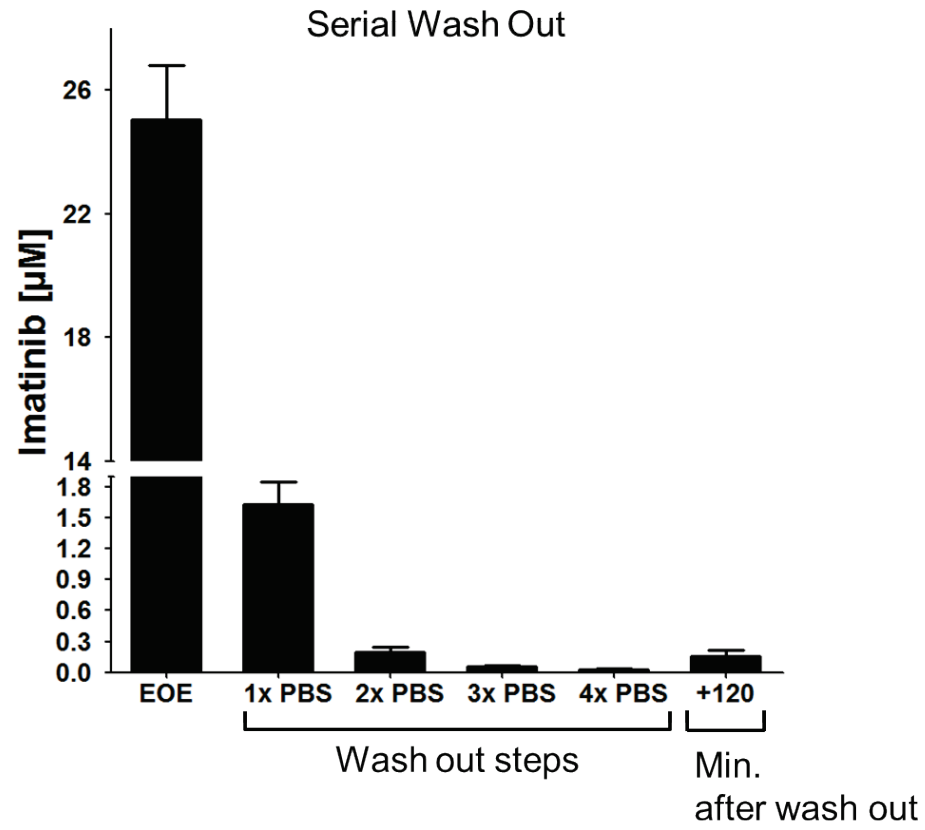


Figure S5



**Figure S5: Determination of washing efficiency**

K562 cells ( $5 \times 10^4$ /ml) were pulse exposed for 2h with  $25 \mu\text{M}$   $^{14}\text{C}$ -labeled imatinib followed by wash-out with PBS (1ml per  $5 \times 10^4$  cells per washing step). Immediately after each washing step the PBS supernatant was subjected to beta-counter analysis to measure the concentration of remaining imatinib. After 4 washing steps, cells were replated into TKI free media. Imatinib concentration was then measured 2h after the last washing step (“+120”). Supernatant analyzed at the end of the TKI exposure (“EOE”) represented a positive control for applied TKI. All measurements were performed in triplicate. Depicted are mean values +SEM of 3 independent experiments. Imatinib concentrations were calculated by fitting the dpm values to a standard curve.