

Peak	Migration Time	Area	% Area	Height
1	3.614	18750	3.05	1176
2	4.088	14191	2.31	911
3	8.454	581040	94.63	9433

Purity = 94.63 %

1. Column: Hibal®250-4 HPLC Column, Lichrospher® 100 RP-18(5 µm)
2. Solvent: 95% Methanol: 5% H₂O (Contain 10 mM H₃PO₄).
3. Wavelength: 254 nm
4. Flow: 1 mL/min
5. HPLC System: Waters 600-717-486 System
6. Software: Empower 2 TM.

Figure S1. HPLC trace of PEG_{3.5K}-EB₂

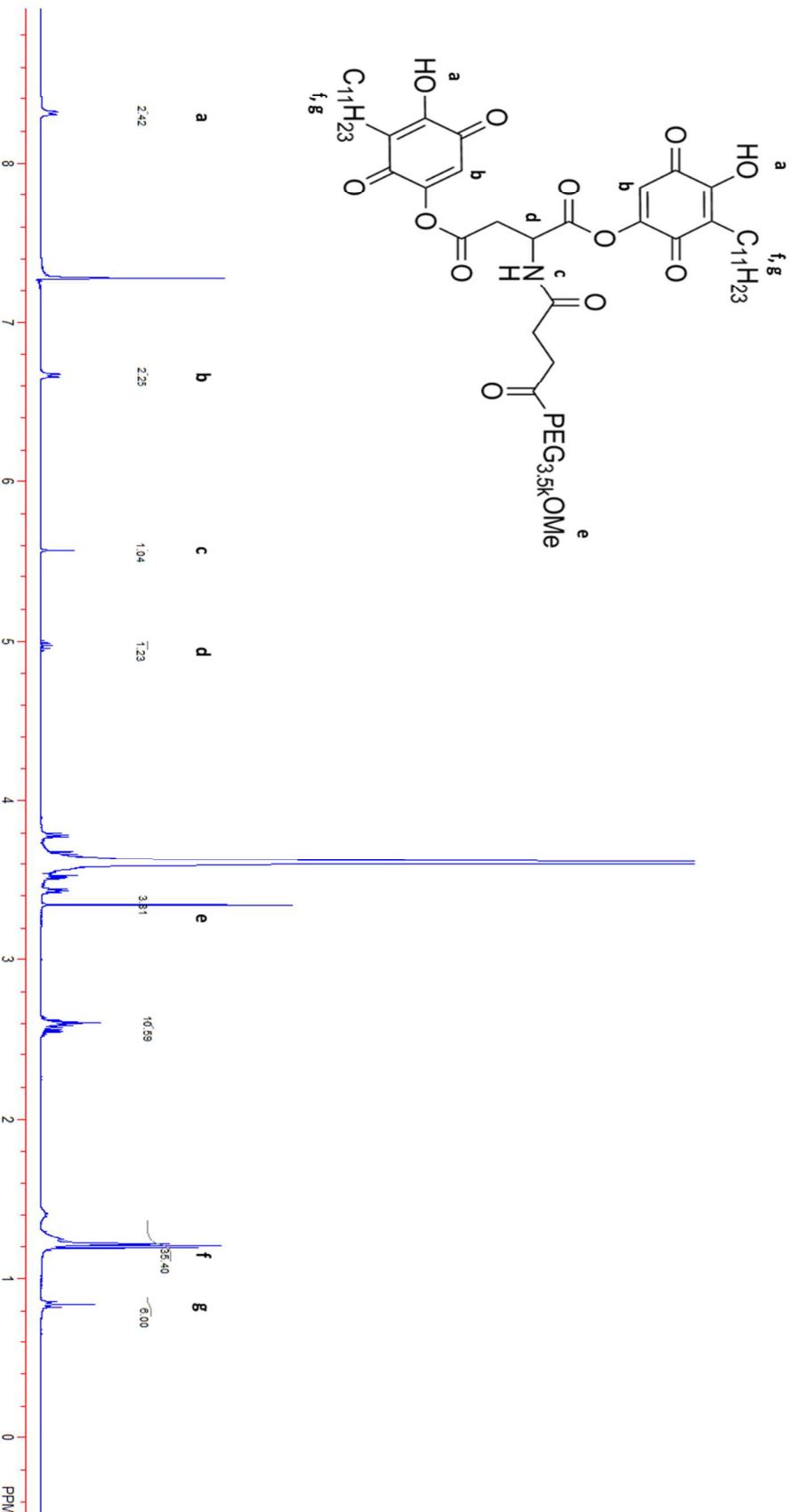


Figure S2. ¹H NMR spectra (400MHz) of PEG_{3.5K}-EB₂ in CDCl₃

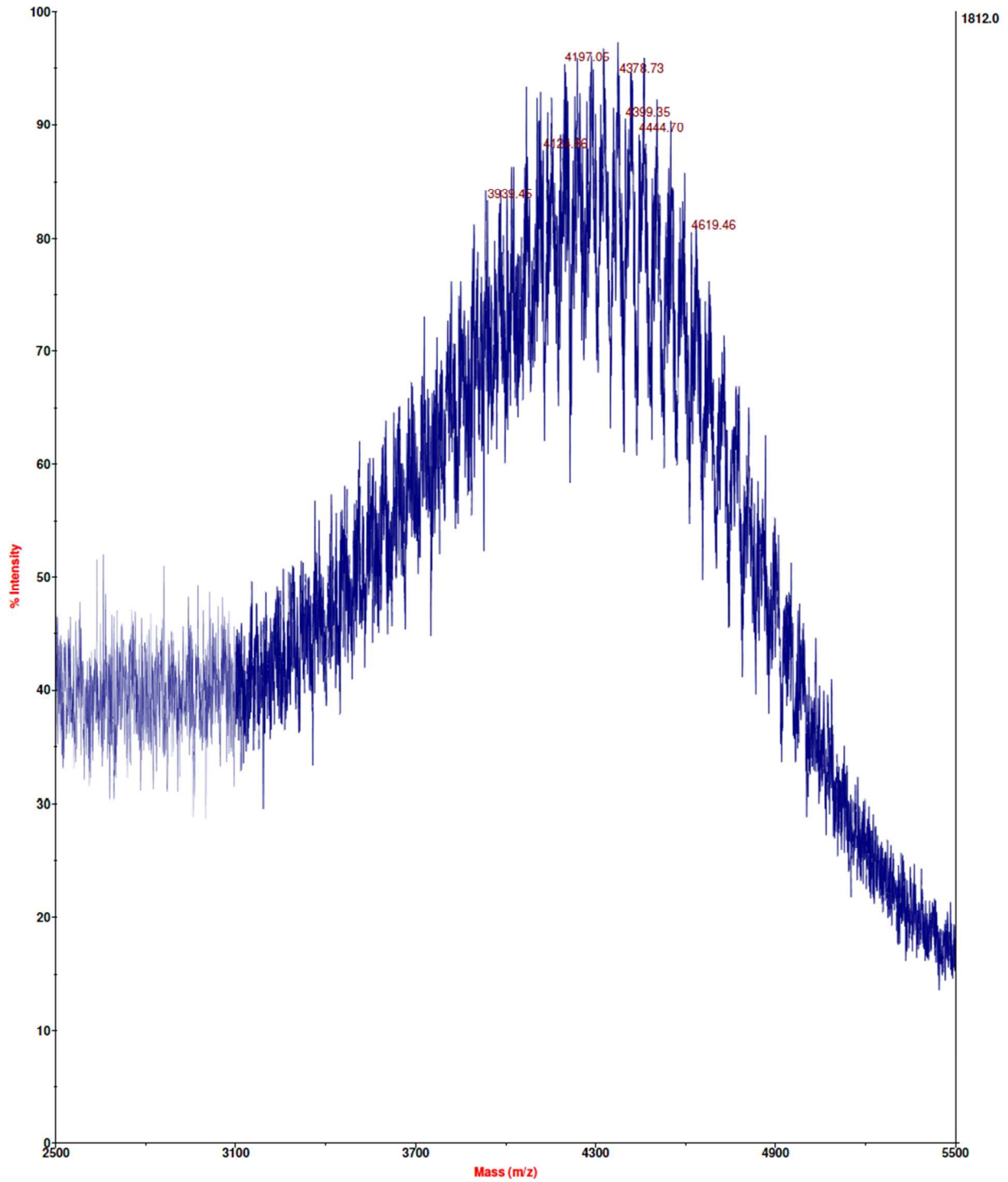


Figure S3. MALDI-TOF of PEG_{3.5K}-EB₂

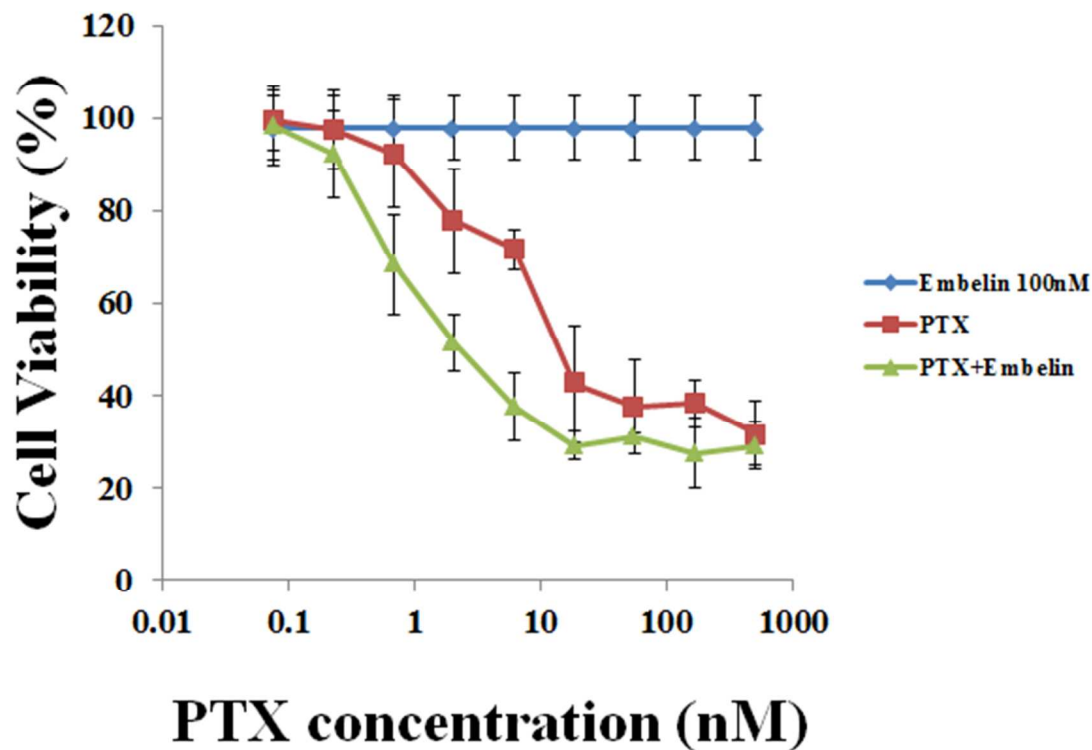


Figure S4. Cytotoxicity of embelin, PTX and the combination of embelin and PTX against prostate cancer cells DU145. Cells were treated with various agents for 48h and cytotoxicity was determined by MTT assay.