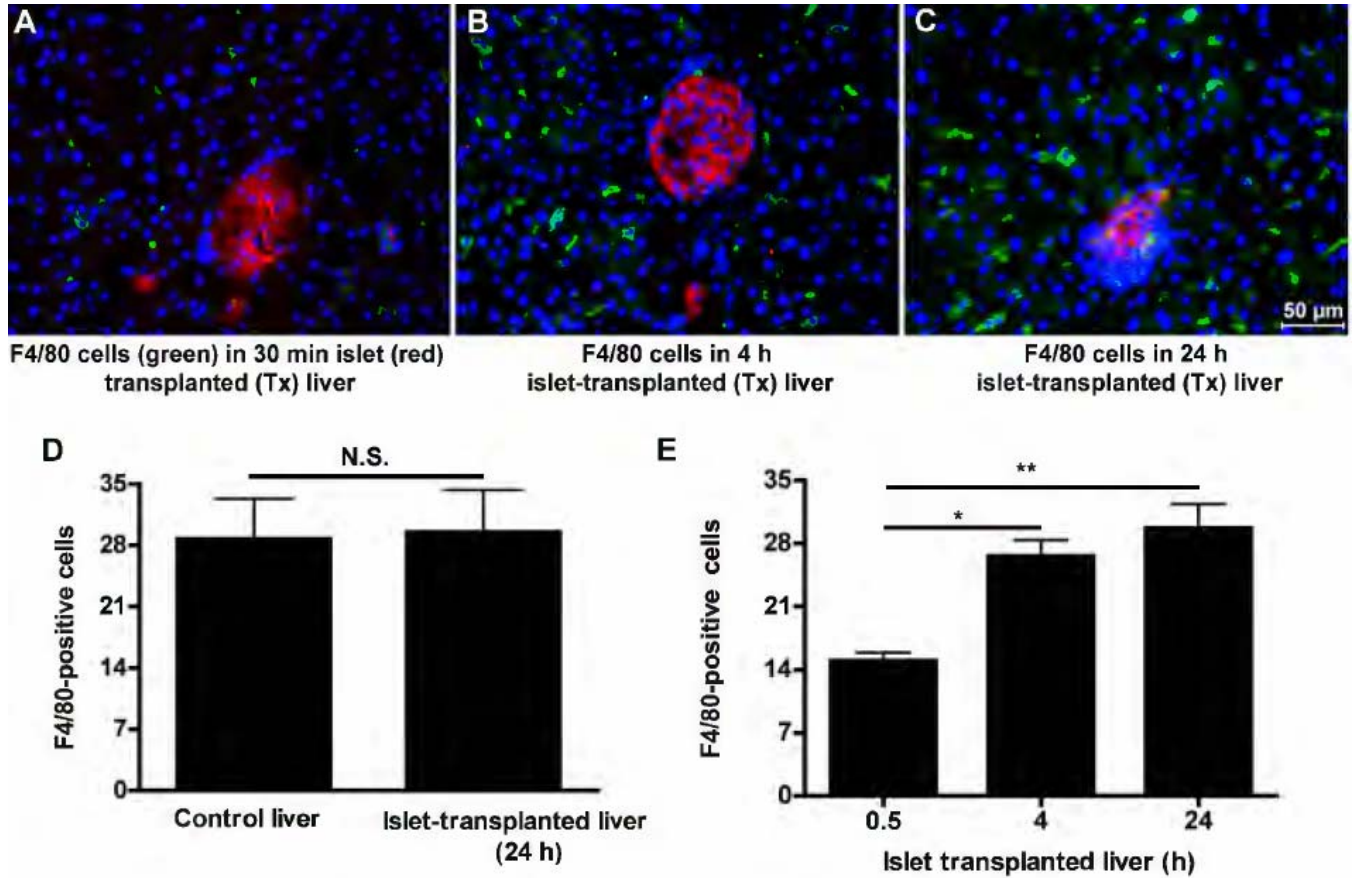


SUPPLEMENTARY DATA

Supplementary Figure 1. Islets were transplanted (Tx) in mice liver and after 30min, 4h and 24h liver was removed and frozen immediately. Cryosections were prepared and stained for F4/80 positive cells (green,). More F4/80 positive cells migrated towards islet transplanted liver after 4h (B, *P<0.05) and 24h (C, **P<0.001) compared to 30min (A). Red color is showing islets and nuclei were stained with DAPI (blue) (200× magnification). (D) Cells were counted by using Image J Software and statistic analysis (GraphPad prism software) was done for comparing control and transplanted liver F4/80 positive cells. (E) Same method was used for counting F4/80 positive cells migration in vicinity of islet at different time point after transplantation. Color of islet and F4/80 cells were interchanged for creating a comparable color with other figures.



SUPPLEMENTARY DATA

Supplementary Figure 2. Gelatinase levels were compared in islets transplanted MMP-9KO and control mice liver by gel-gelatine zymography. There was complete inhibition of MMP-9 in islet transplanted MMP9KO mice.

