

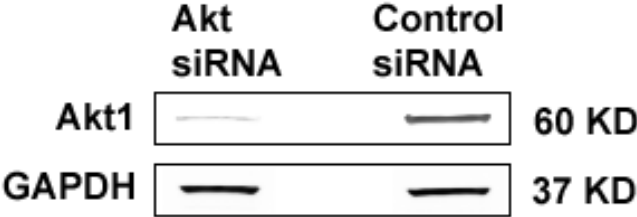
Supplemental figures

Figure legends

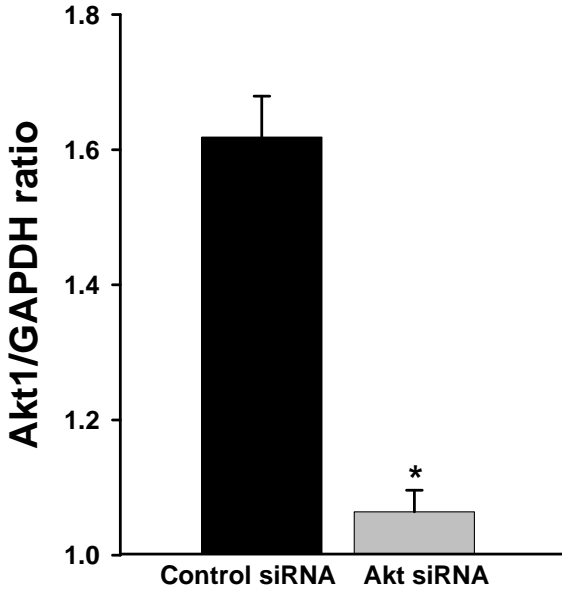
Knockdown of Akt using the specific siRNA duplex against both Akt1 and Akt2. A. Representative blot of Akt1 (from three independent experiments); **B.** Quantification of changes of Akt1; * $p < 0.001$ compared to the control group (n=3). **C.** Representative blot of Akt2 (from three independent experiments); **D.** Quantification of changes of Akt2; * $p < 0.05$ compared to the control group (n=3).

Supplemental figures

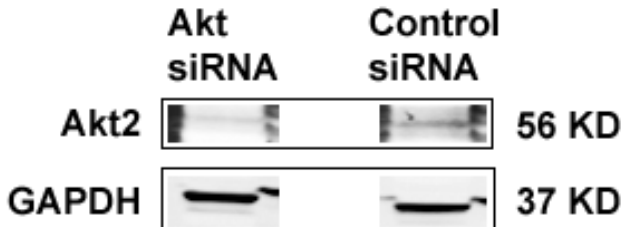
A



B



C



D

