

1 **Supplemental Figure Legends**

2 **Supplemental Figure 1:** LRH-1 and SF-1 activity in granulosa cells. Schematic representation of the (A)
3 LRH-1 LBD and (B) SF-1 LBD GAL4 fusion constructs used in the GAL4 activation assays performed in
4 GRMO2 cells. The data represents the mean \pm SEM of at least 4 independent experiments performed in
5 triplicate. a indicates $P < 0.05$ vs. GAL4 or WT NR5A LBD, b indicates $P < 0.05$ vs. GAL4, and c
6 indicates $P < 0.01$ vs. GAL4 or WT NR5A LBD.

7

8 **Supplemental Figure 2:** Negative control for (A) FHL2 or (B) FHL1 immunohistochemistry.
9 Immunohistochemistry was performed on a paraffin embedded d18 mouse ovary section using only a
10 secondary antibody. Blocking solution was applied to the sections during the primary antibody
11 incubation steps.

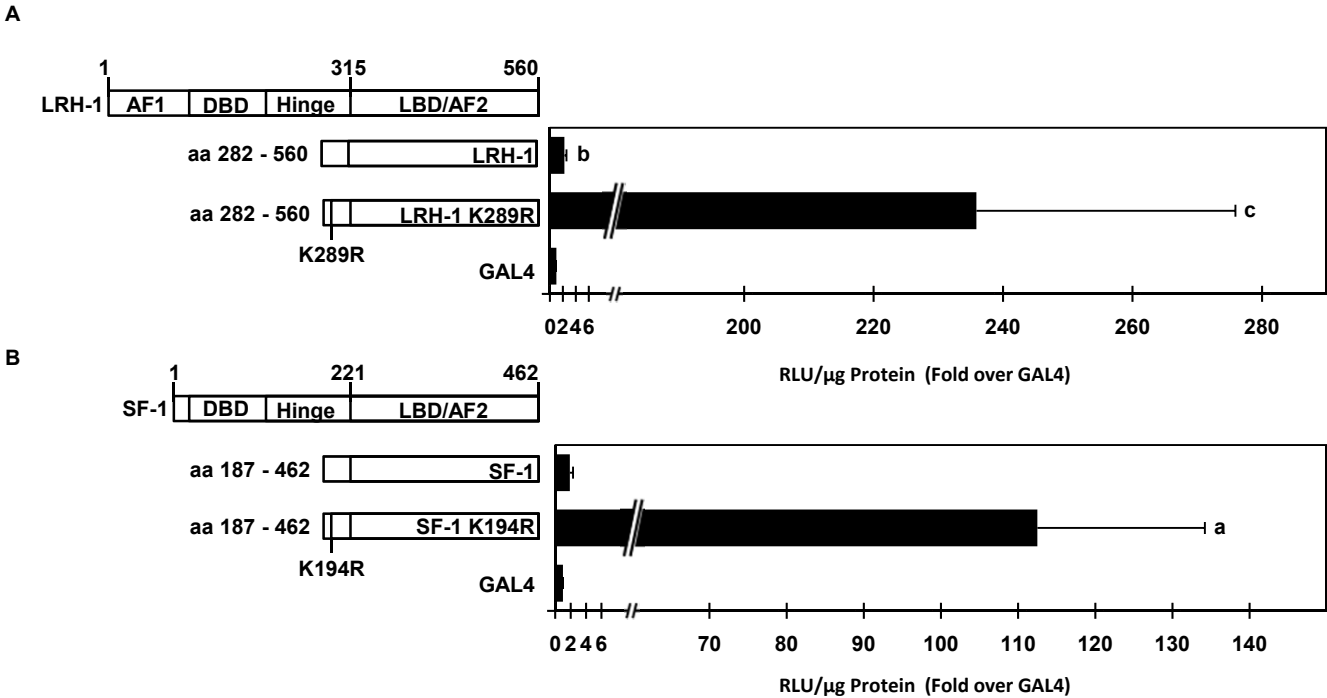
12

13 **Supplemental Figure 3:** FHL2 interacts with CREB *in vivo* and *in vitro* (A) β -gal assays performed with
14 yeast cell lysates. Results are an mean \pm SEM of 3 independent experiments. (B) GST pulldown assays
15 were performed with full length GST-FHL2. 10% of the input sample was run as a control.

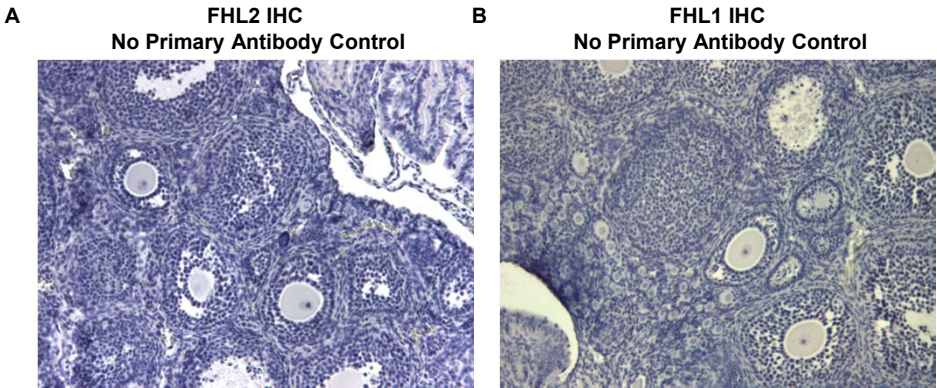
Table 1: List of PCR primers used in this study

Gene	PCR assay	Primer Sequence
RPL19	Semi-quantitative	CTGAAGGTCAAAGGGAATGTG GGACAGAGTCTTGATGATCTC
FHL2	Semi-quantitative	GGCAAGAAGTACATTCTAAAGGAGG CTTGTATTCCATCTTGCGCC
RPL19	qPCR	CGGGAATCCAAGAAGATTGA TTCAGCTTGTGGATGTGCTC
FHL1	qPCR	CTGCGTGGATTGCTACAAGA CCTTCATAGGCCACCACACT
FHL2	qPCR	CAGCTATCTGGGCAACGCTT CCACCAGAGACAGGGAGCACTTC
Inhibin- α	qPCR	GTGGGGATCCTGGAATAAGG GCACCTGTAGCTGGGAAAAG
ER β	qPCR	TGTGTGTGAAGGCCATGATT TCTTCGAAATCACCCAGACC
CREB	qPCR	CCTGCCATCACCCTGTAAC TGTACCCCATCCGTACCATT
P450 _{scc}	qPCR	CTGCCTCCAGACTTCTTTTCG CTGGCTGAAGTCTCGCTTCT
Inhibin- α	ChIP-qPCR	CCTGAATGGGTCAGGTCACT ACCCTTCTCACCCAGTCTC

Supplemental Figure 1:

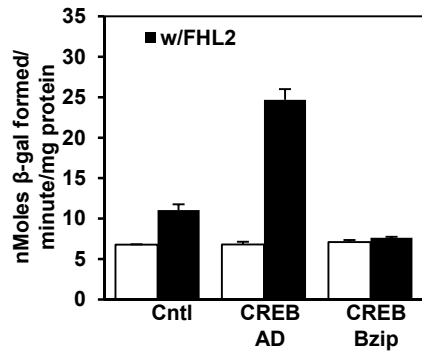


Supplemental Figure 2:



Supplemental Figure 3:

A



B

