



Supplemental Material to:

**Uma Gunasekaran, Courtney W. Hudgens,
Brian T. Wright, Matthew F. Maulis,
and Maureen Gannon**

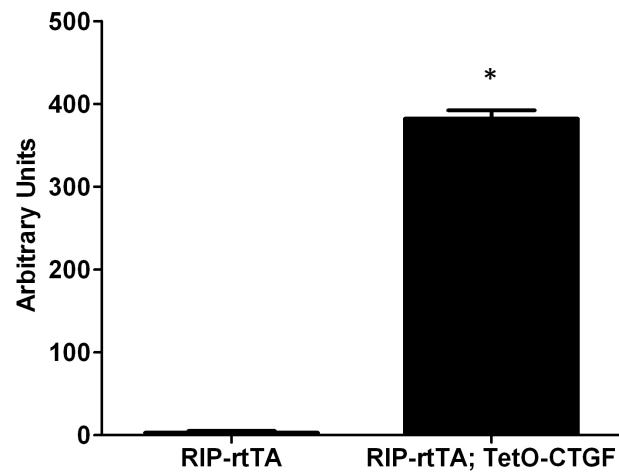
**Differential regulation of embryonic
and adult β cell replication**

2012; 11(11)

<http://dx.doi.org/10.4161/cc>.

<http://www.landesbioscience.com/journals/cc/article/20545>

Supplemental Figure 1



Supplemental Figure 1. Quantitative real time PCR (qRT-PCR) of total *Ctgf* expression. 6.5-7.5 week old control and bigenic mice were treated with doxycycline for one week. qRT-PCR of isolated islets revealed an almost 400-fold increase in total *Ctgf* expression in bigenic islets. * $p=0.02$, $n=2$ for each genotype.

Supplemental Figure 2

RIP-rtTA

RIP-rtTA; TetO-CTGF

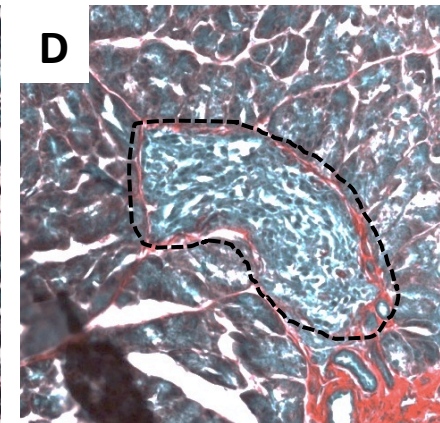
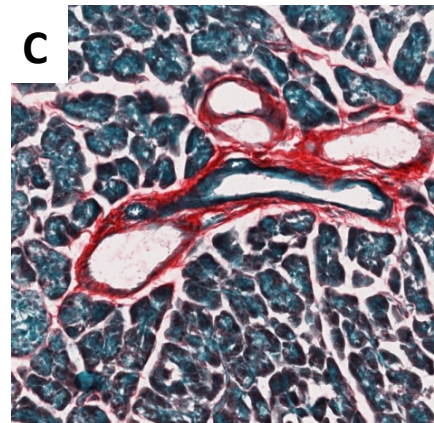
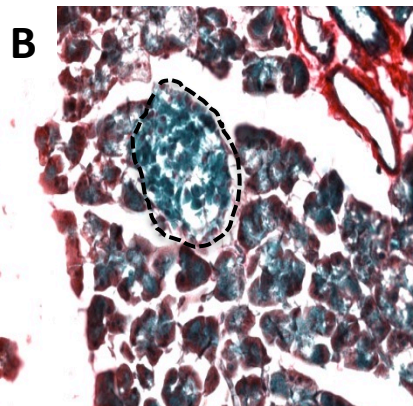
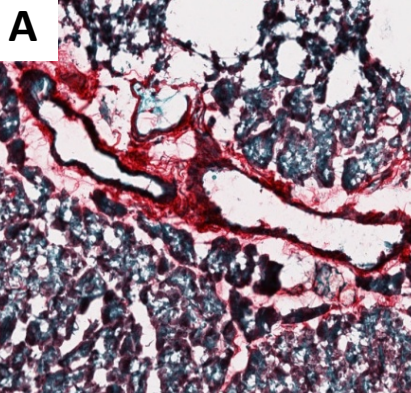
ducts

islet

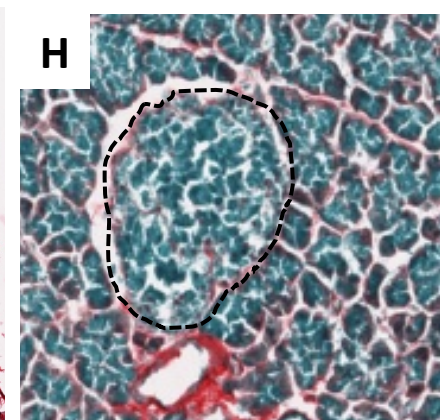
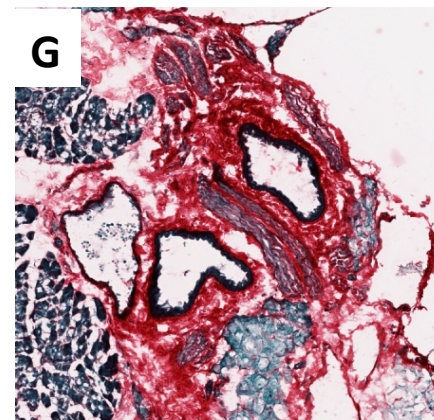
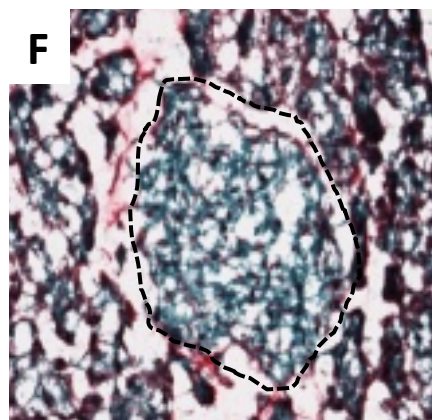
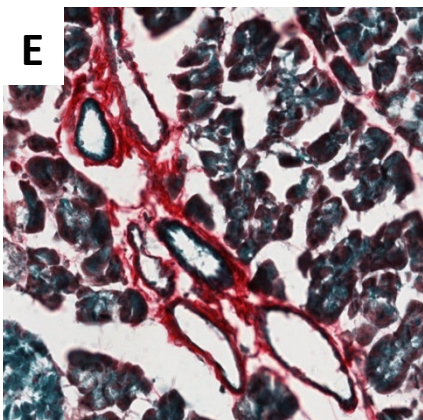
ducts

islet

1 week DOX



5 weeks DOX



Supplemental Figure 2. Assessment of collagen deposition after CTGF over-expression. (A-D) Direct Red 80/Fast Green staining of ~8 week old pancreata for collagen (red) revealed no increase in peri-ductal, peri-vascular, or peri-islet collagen deposition after one week of CTGF induction (C, D) compared with controls (A, B). (E-H) However, after five weeks of CTGF induction, there is evidence of increased peri-ductal and peri-vascular collagen (compare G with E), with no increase in peri-islet collagen (compare F and H). Islets are circled with dotted lines in B, D, F, and H. Magnification 100X for ducts and vessels, 5X for islets.