



Supplemental Material to:

**Virginie M.S. Betin, Thomas D.B. MacVicar,
Stephen F. Parsons, David J. Anstee and Jon D. Lane**

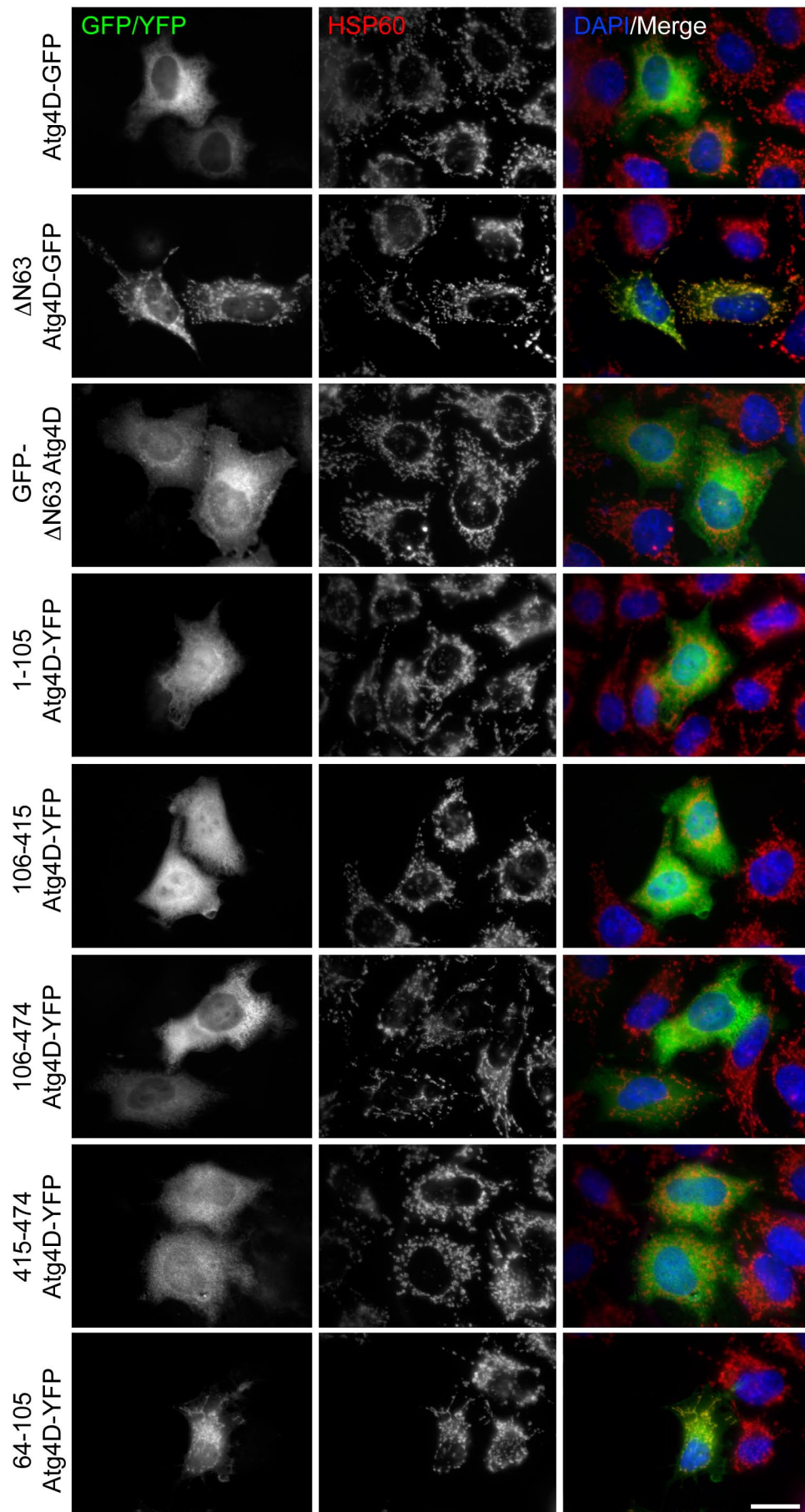
**A cryptic mitochondrial targeting motif in Atg4D links
caspase cleavage with mitochondrial import and oxidative
stress**

Autophagy 2012; 8(4)

<http://dx.doi.org/10.4161/auto.19227>

www.landesbioscience.com/journals/autophagy/article/19227

Betin et al. Suppl. Fig. 1



Betin et al. Suppl. Fig. 2

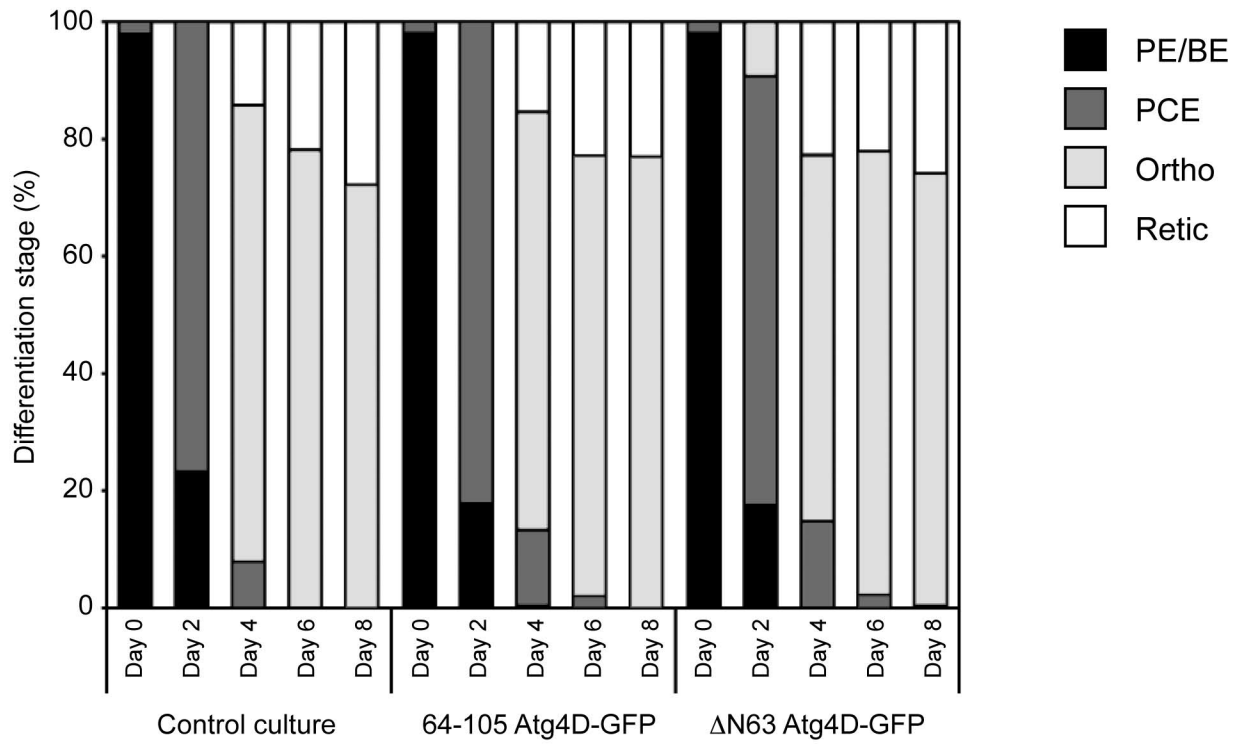


Figure S1. Examples of HeLa cells transiently expressing the constructs indicated in Fig. 1A. Cells were fixed and co-stained with anti-HSP60 antibodies to label mitochondria.

Figure S2: Analysis of erythroid cell differentiation in precursors expressing 64-105 Atg4D-GFP or Δ N63 Atg4D-GFP. Unmodified human erythroid precursors (control culture), and precursors stably expressing 64-105 Atg4D-GFP or Δ N63 Atg4D-GFP were differentiated in vitro. Differentiation status was assessed by light microscope on days 0, 2, 4, 6, 8 post switch to differentiation medium (numbers are normalized to take into account pre-incubation with lenivirus).