

## Supplementary Figures

---

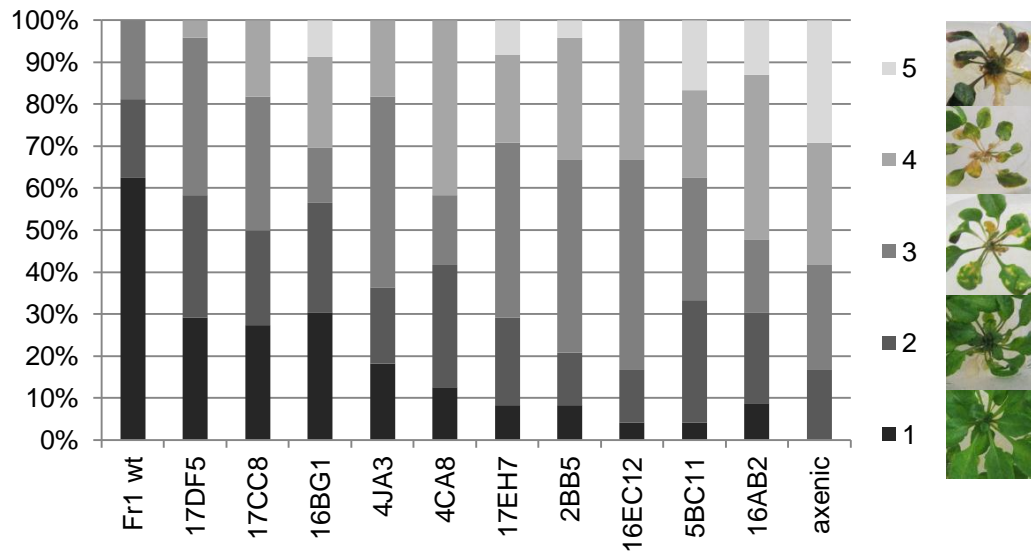
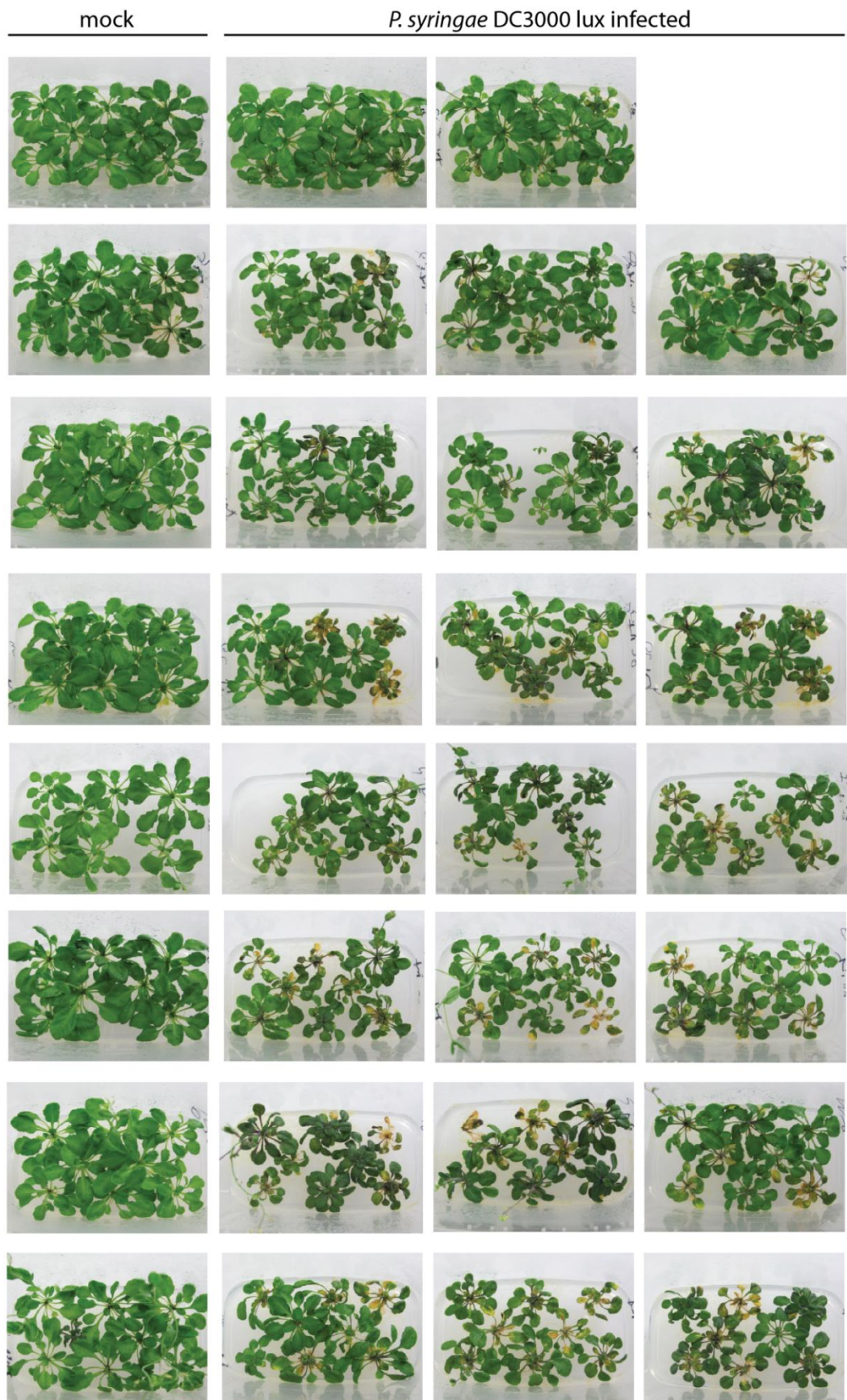


Fig. S1: Distribution of disease phenotypes observed at 20 days post infection. *A. thaliana* plants grown in microboxes were seed-inoculated with *Sphingomonas* sp. Fr1 wild type (Fr1 wt), *Sphingomonas* Tn5 mutant suspension or 10 mM MgCl<sub>2</sub> (axenic). Three week old plants were spray infected with *P. syringae* DC3000 lux. The disease phenotypes are given in numbers from 1-5 (1 no disease symptoms to 5 completely diseased) as described by Whalen et al. (1991). On the right, exemplanary pictures are given for each disease score.



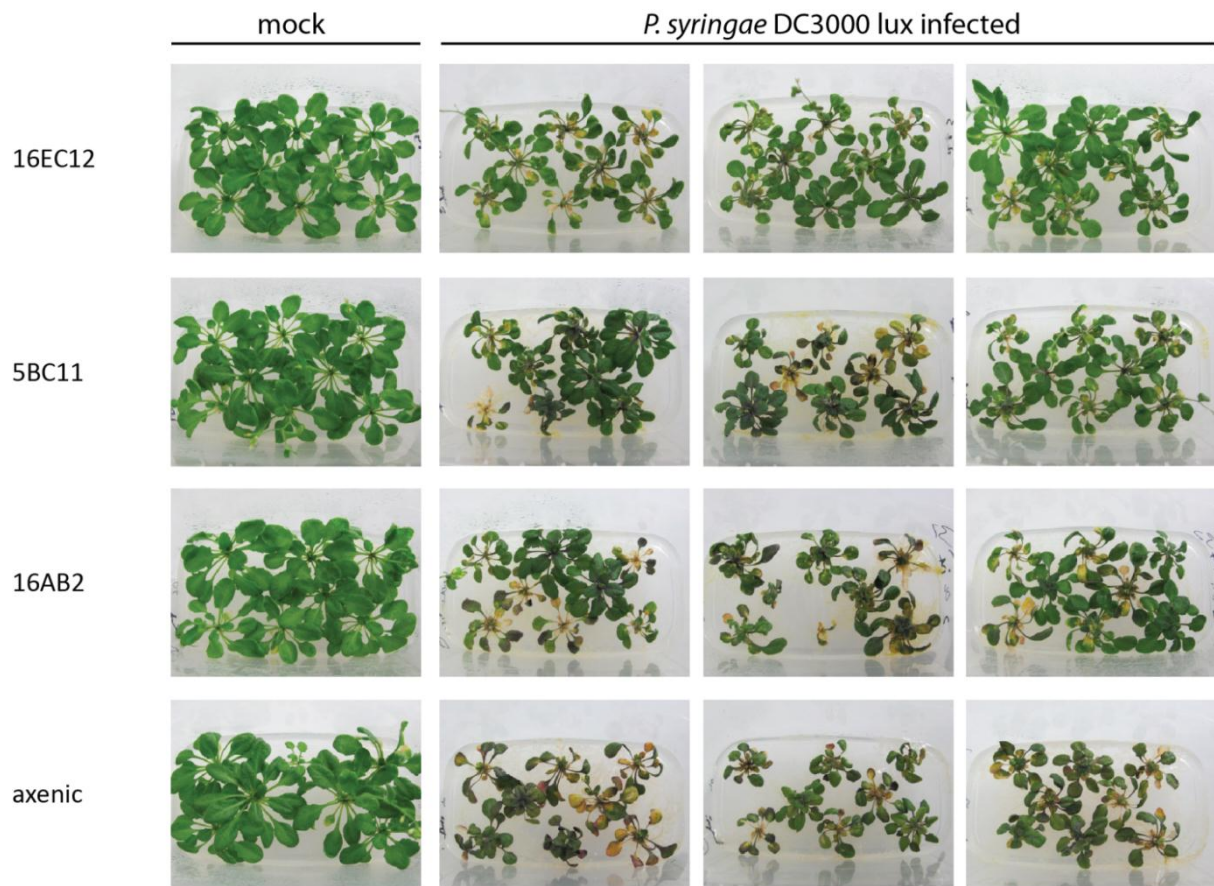


Fig. S2: Evaluation of Tn5 mutant candidates. Phenotype of *Sphingomonas* sp. Fr1 wild type (wt) and Tn5 mutant candidate inoculated plants at twenty days post infection. *A. thaliana* plants grown in microboxes were seed-inoculated with *Sphingomonas* sp. Fr1 wt, *Sphingomonas* Tn5 mutant suspension or 10 mM MgCl<sub>2</sub> (axenic). Three week old plants were spray infected with *P. syringae* DC3000 lux or mock-treated with 10 mM MgCl<sub>2</sub>. Treatments are sorted according to increasing disease severity as determined by the disease severity score.