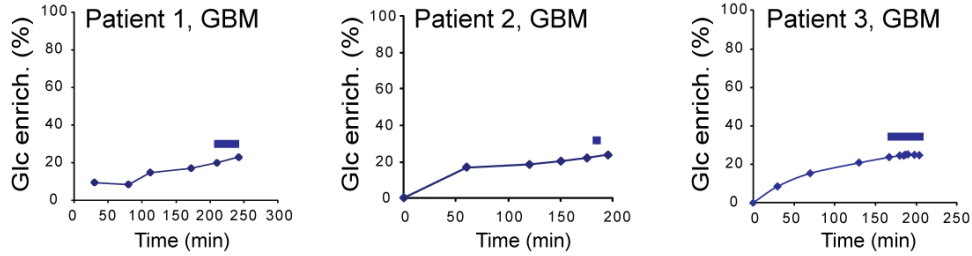


Supporting Information for Maher et al, "Metabolic complexity beyond the Warburg effect characterizes human brain tumors *in vivo*."

4g/hr [U-¹³C]glucose infusion



8g [U-¹³C]glucose bolus, 8g/hr [U-¹³C]glucose infusion

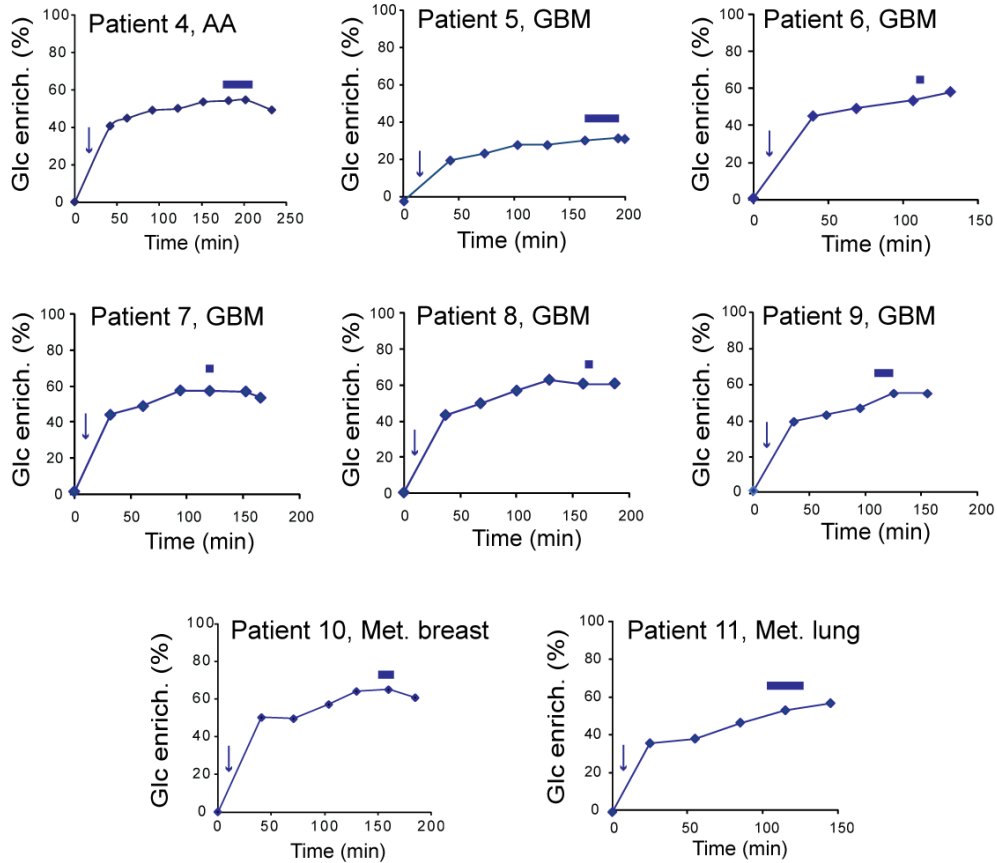


Fig. S1: Time courses for percent ¹³C enrichment in plasma glucose (Glc) for all patients in the study. "Glc enrichment (%)" is the fraction of plasma glucose that was uniformly labeled with ¹³C, analyzed by mass spectrometry. The arrow indicates the end of the bolus of 8g [U-¹³C]-glucose delivered to patients 4-11. The initial plasma sample was often collected >1 hr prior to the bolus. The glucose enrichment in this sample (essentially 0%) is considered to be identical to the enrichment at the beginning of the bolus (time 0). Tumor samples were collected during the periods indicated by the blue bar. Abbreviations: GBM, glioblastoma multiforme; AA, anaplastic astrocytoma; Met., metastasis.