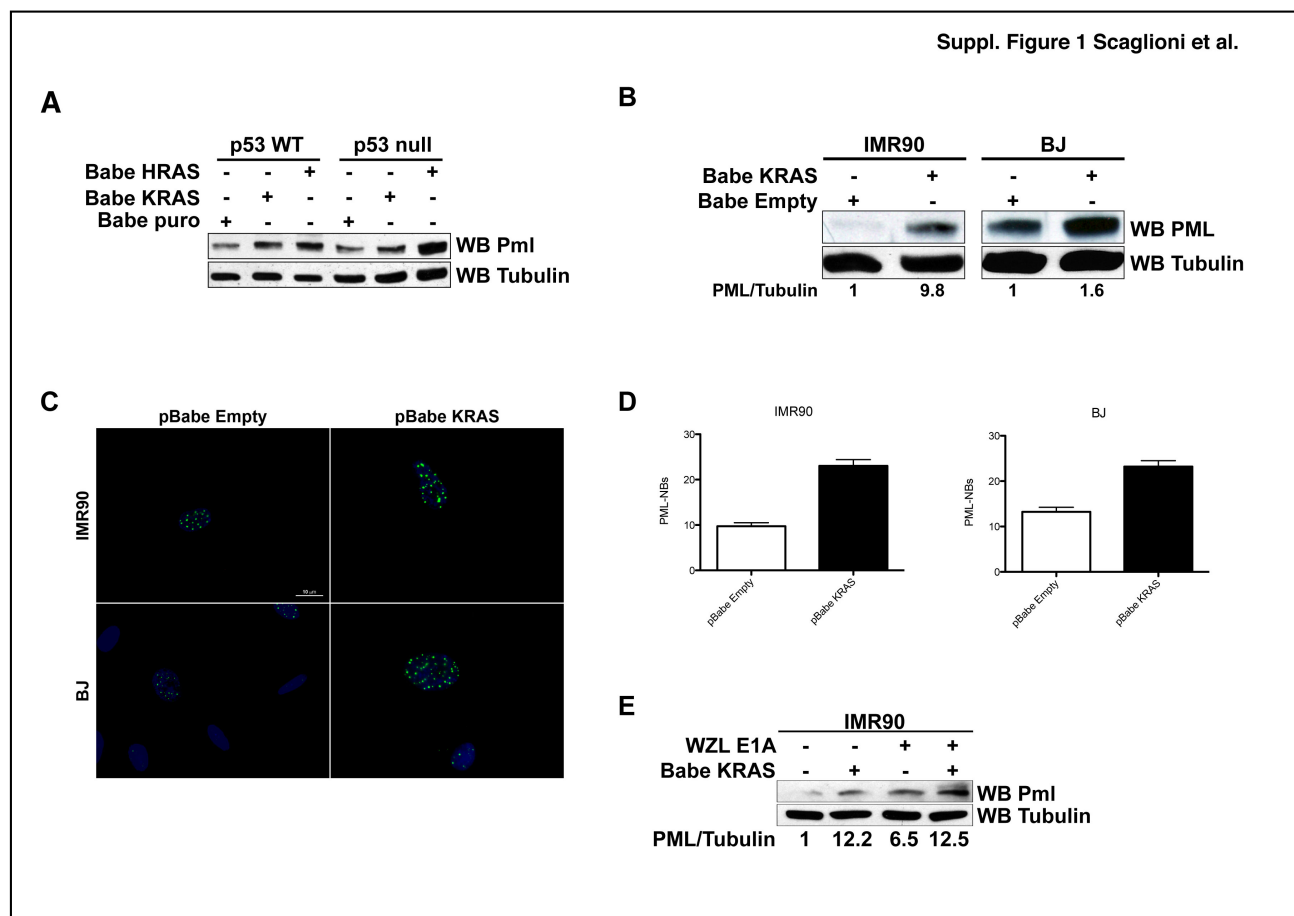


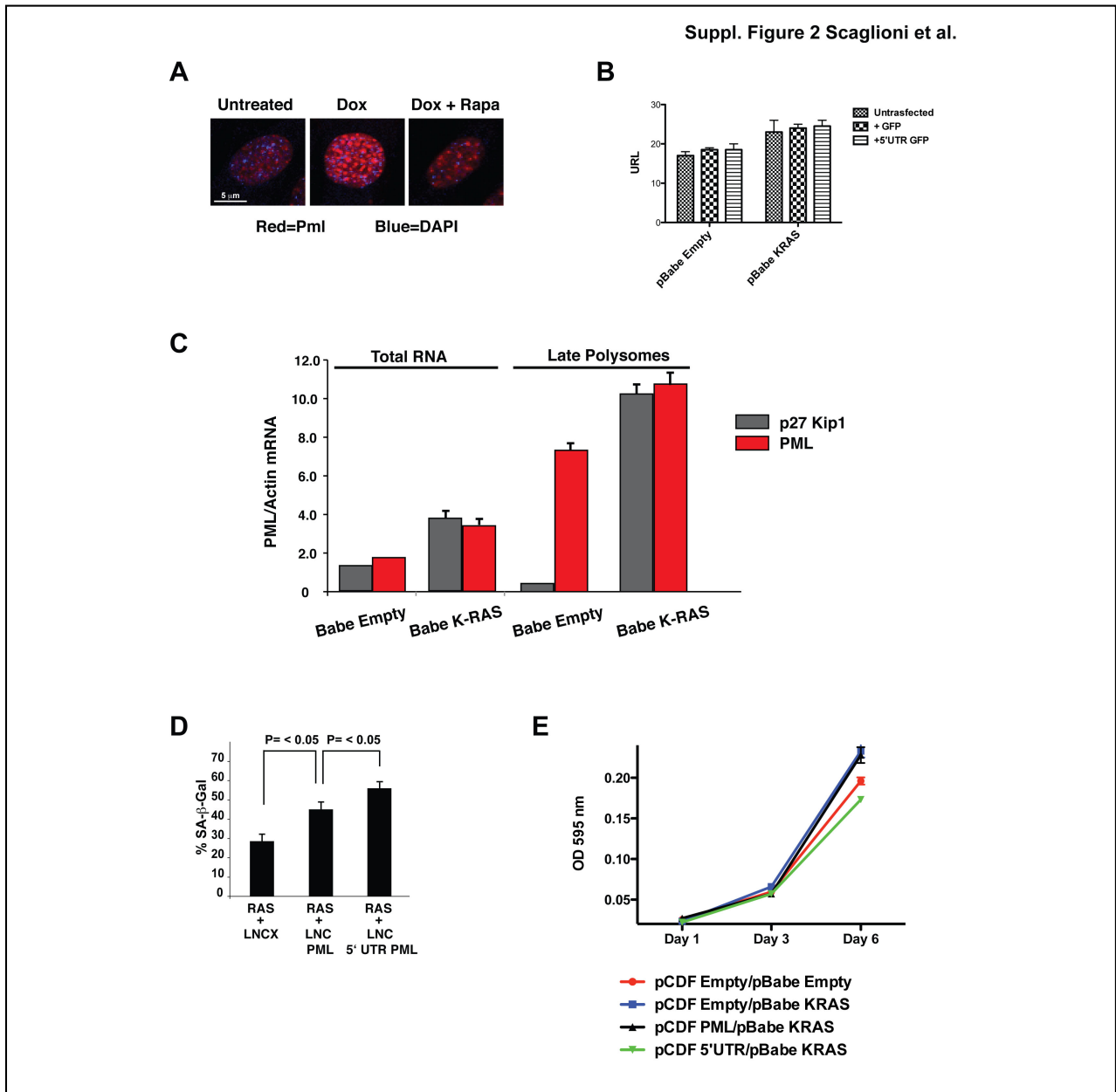
## Supplementary Information

### Table of Content

Supplementary Figure 1	Page 2
Legend to Supplementary Figure 1	Page 2
Supplementary Figure 2	Page 3
Legend to Supplementary Figure 2	Page 3



**Supplementary Figure 1.** **A.** WB analysis of wild type and p53 null MEFS transduced with the indicated retroviruses. **B.** WB of IMR90 and BJ human fibroblasts transduced as indicated. **C.** Immunofluorescence showing representative images of PML nuclear bodies (PML-NBs) in IMR90 and BJ fibroblasts transduced as indicated. Green: PML; Blue: DAPI nuclear stain. Size bar: 10  $\mu$ m. **D.** Histograms show the quantification of PML-NBs in transduced IMR90 and BJ fibroblasts. One hundred nuclei were counted for each condition. Bars represent SEM ( $P < 0.0001$ ). **E.** WB of IMR90 cells transduced as indicated. The intensity of the bands is expressed as a ratio between PML and Tubulin.



**Supplementary Figure 2.** **A.** Immunofluorescence of Tet-*o-K-Ras/p53*<sup>-/-</sup>/rtTA MEFs treated as indicated. Red: endogenous Pml protein. Blue: DAPI nuclear stain. Size bar: 10  $\mu$ m. **B.** The histogram shows luminescence expressed as a signal to noise ratio with arbitrary units in *p53* null MEFs transduced and transfected as indicated. Note that the Renilla expression vector was added to the transfection mix to monitor transfection efficiency of the WB shown in Fig. 4B. This is the representation of 3 independent readings of the same lysates. Error bars represent SEM. **C.** Graph shows *PML* and *p27 Kip1* RNA levels detected by RT-PCR in cytoplasmic cell extracts of BJ human

fibroblasts fractionated through a sucrose gradient to obtain polyribosome fractions. SEM were not drawn when too small to appear on graph. **D.** Histogram shows percentage of perinuclear SA- $\beta$ -Gal staining in IMR90 human fibroblasts cells transduced as indicated. Three hundred cells were scored in three independent experiments. Error bars represent standard deviations. Standard deviations were not drawn when too small to appear on graph. **E.** Growth curve of p53 null MEFs transduced with the indicated retroviral vectors. The results represent three independent experiments. Error bars represent standard deviations. They were not drawn when too small to appear.