

# Supporting Information

## Formation of Acridones by Ethylene Extrusion in the Reaction of Arynes with $\beta$ -Lactams and Dihydroquinolinones

Yuesi Fang,<sup>†</sup> Donald C. Rogness,<sup>†</sup> Richard C. Larock,<sup>\*,†</sup> and Feng Shi<sup>\*,‡</sup>

<sup>†</sup>*Department of Chemistry, Iowa State University, Ames, IA 50011, U.S.A.*

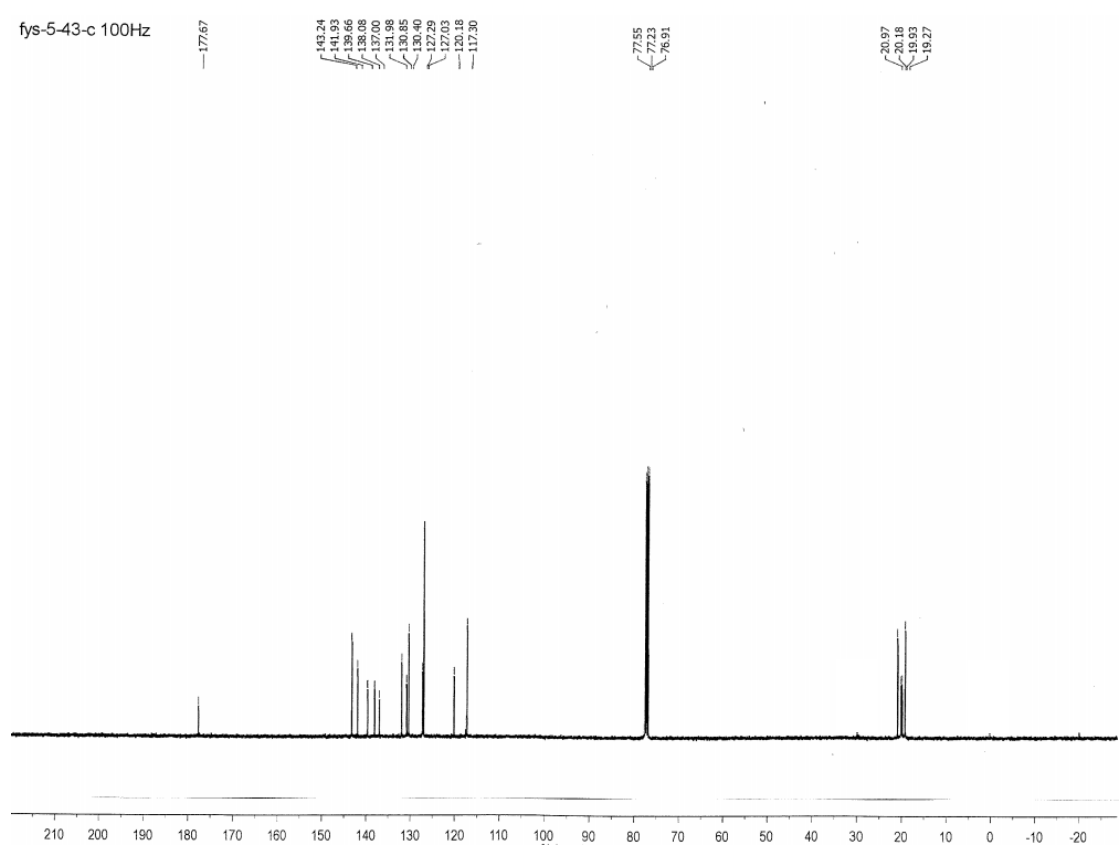
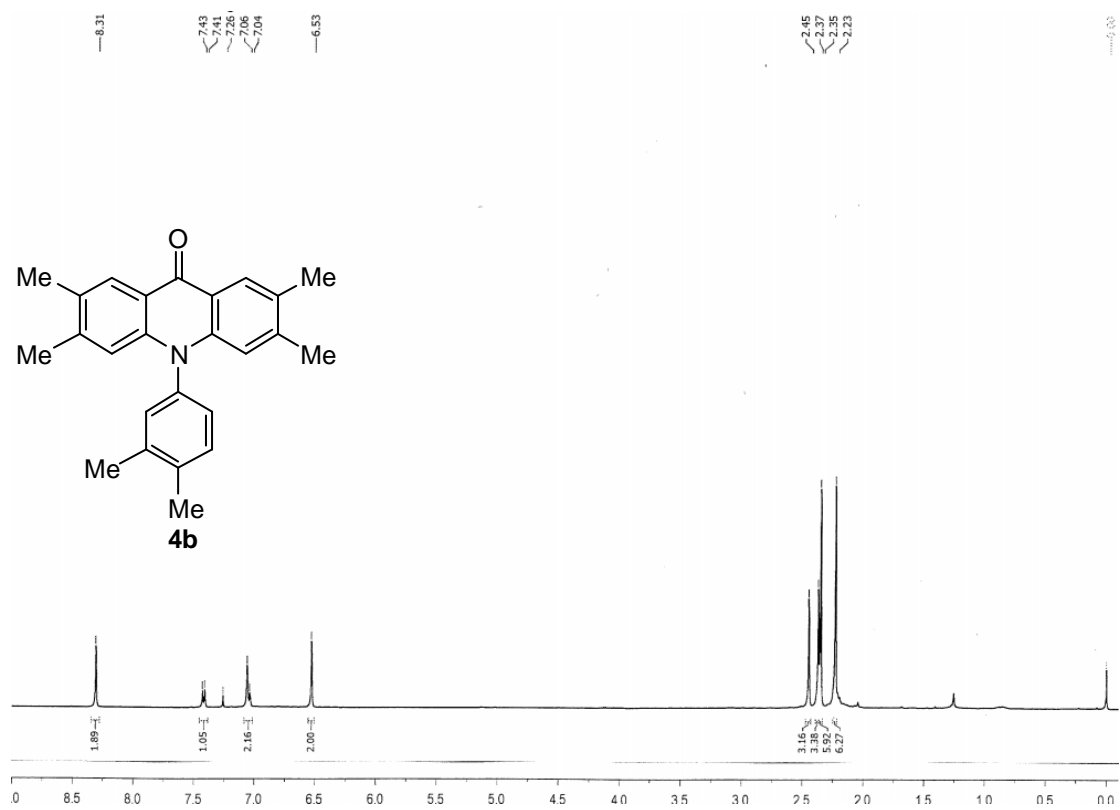
<sup>‡</sup>*Key Laboratory of Natural Medicine and Immuno-Engineering of Henan Province, Henan  
University, Jinming Campus, Kaifeng, Henan 475004, China PR*

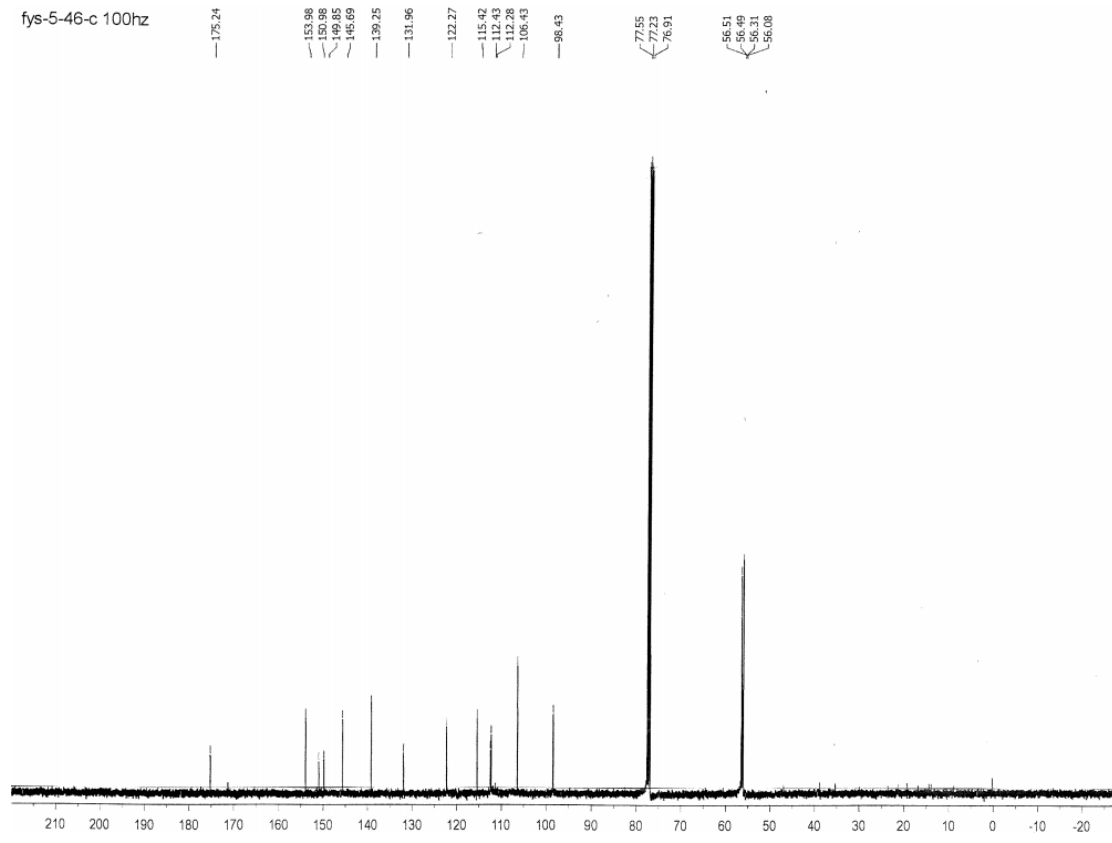
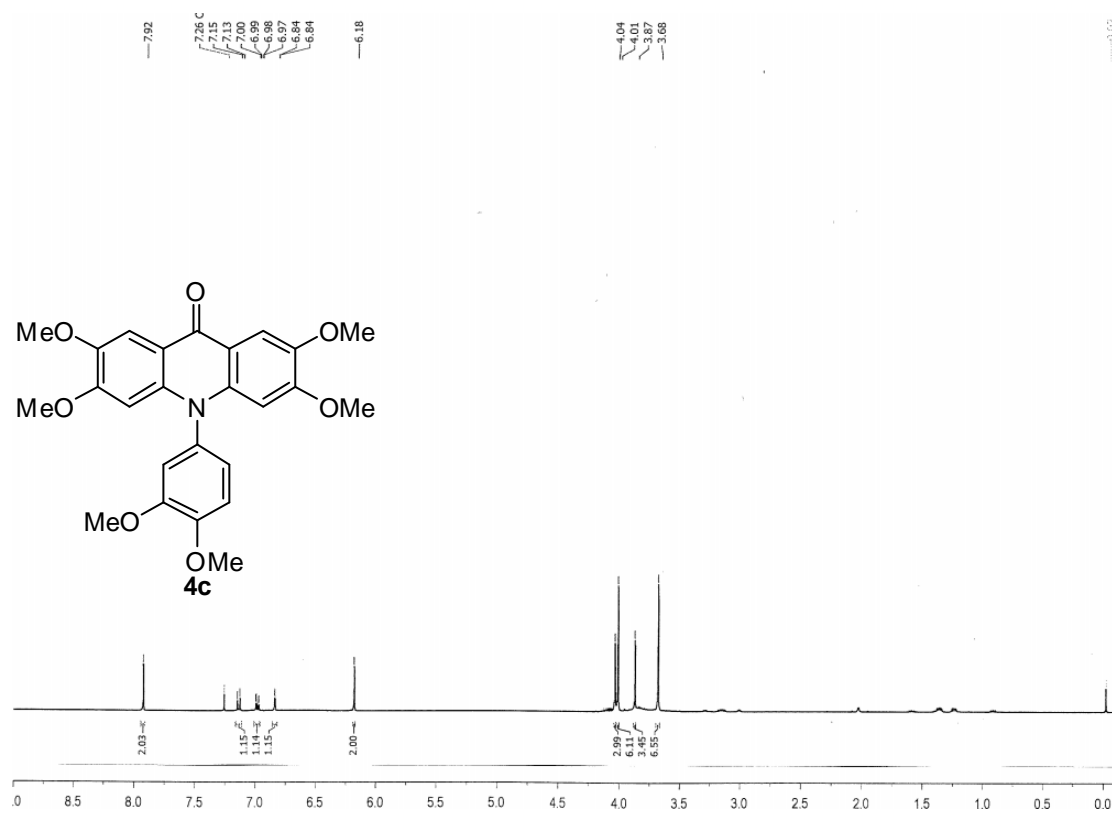
[fshi@henu.edu.cn](mailto:fshi@henu.edu.cn), [larock@iastate.edu](mailto:larock@iastate.edu)

### Table of Contents

Copies of <sup>1</sup> H and <sup>13</sup> C NMR Spectra.....	S2-S20
---	--------





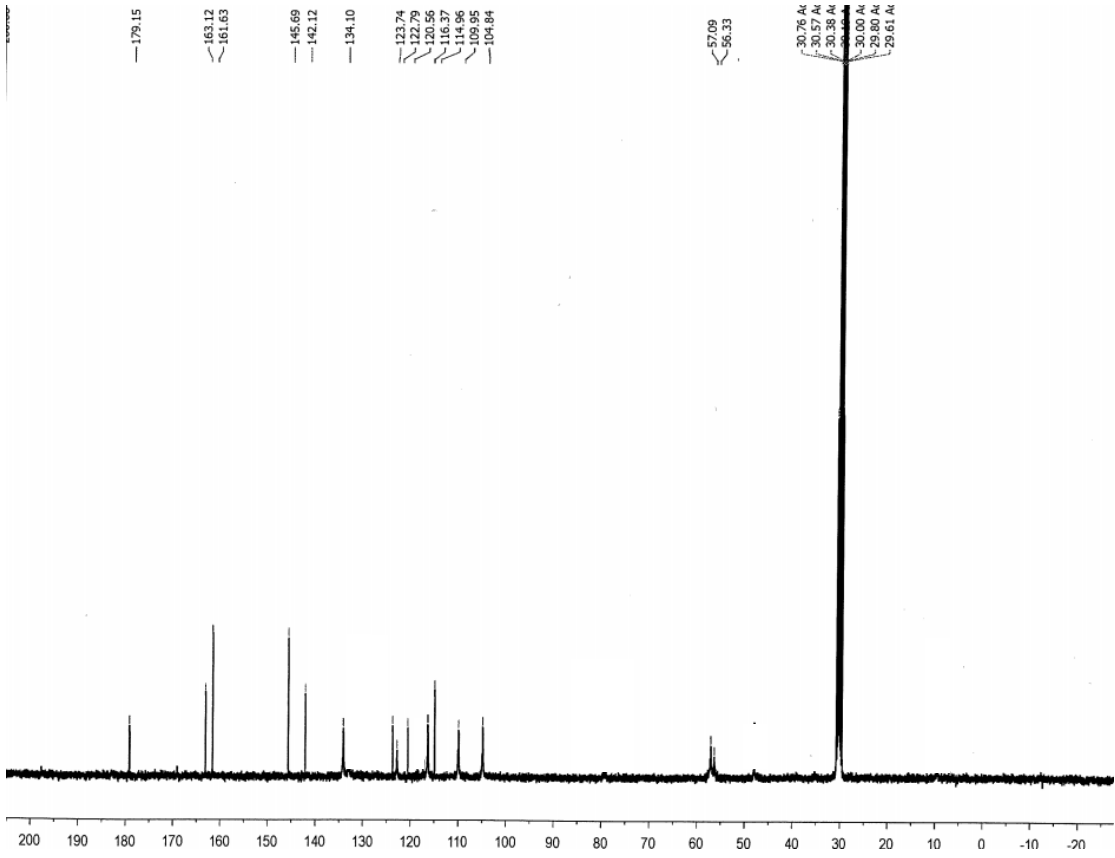
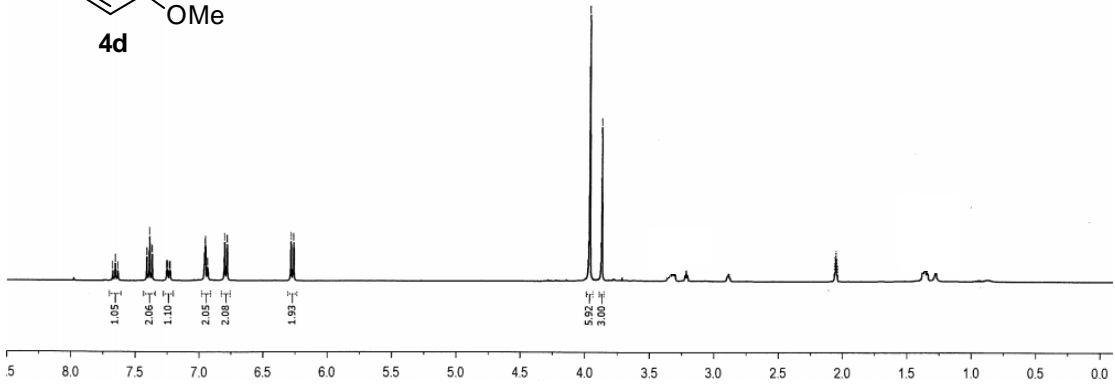
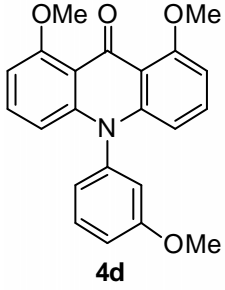


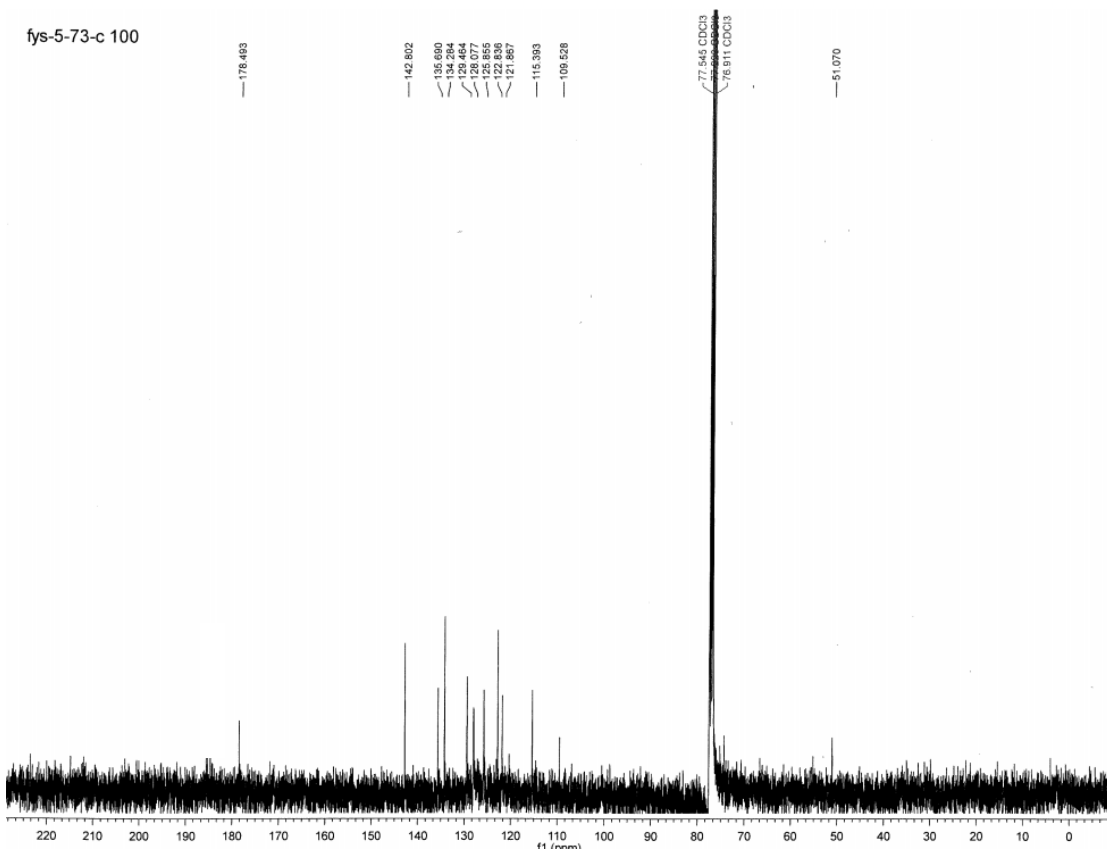
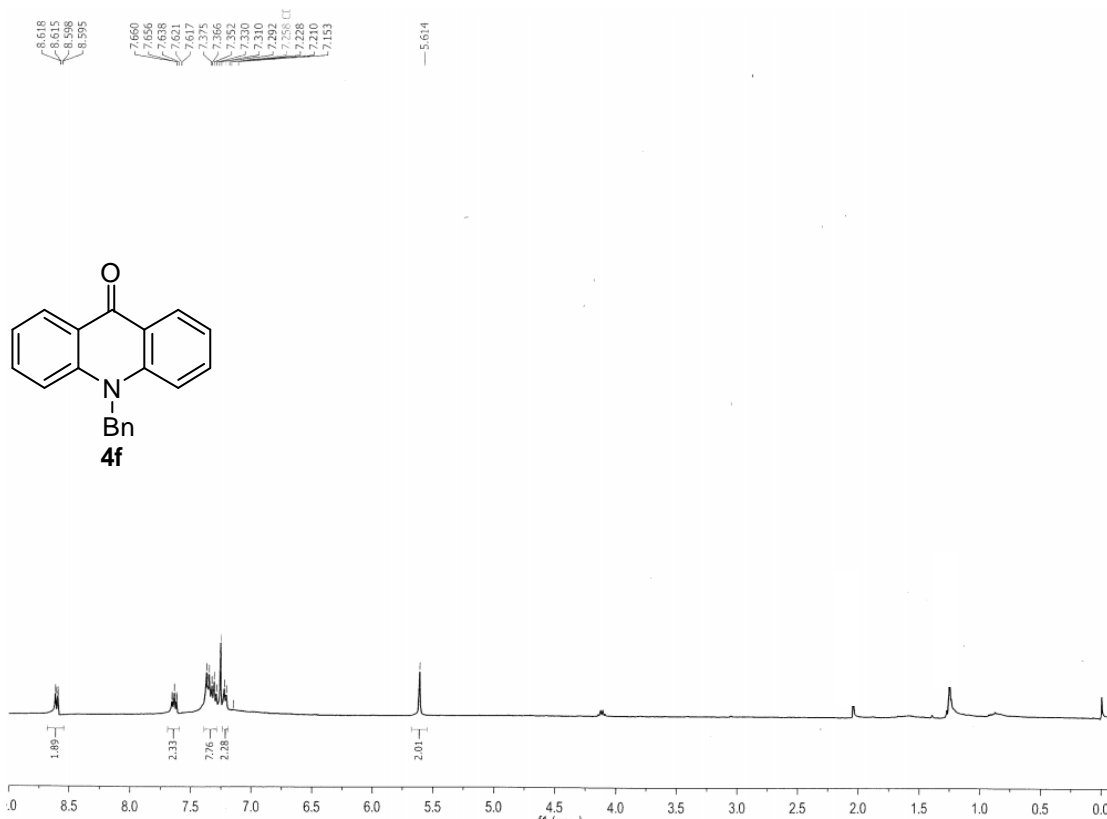
Acetone

7.674  
7.674  
7.634  
7.409  
7.385  
7.387  
7.251  
6.955  
6.932  
6.801  
6.780  
6.284  
6.263

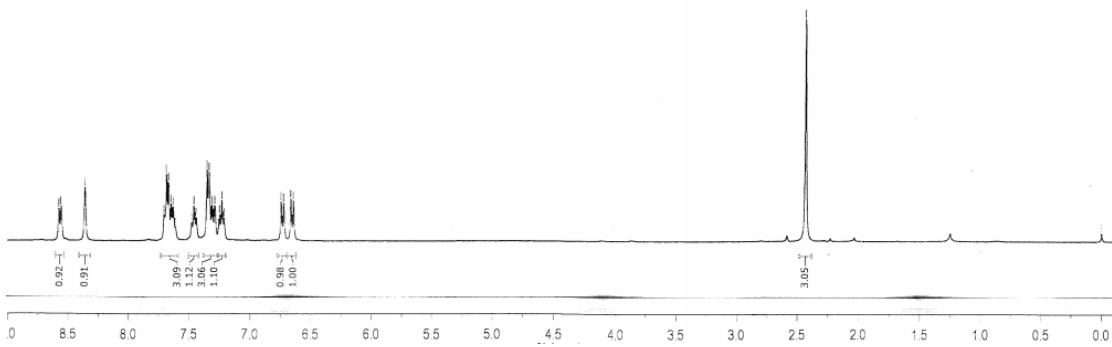
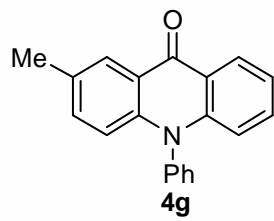
3.963  
3.889

2.063 Ace  
2.057 Ace  
2.052 Ace  
2.046 Ace  
2.041 Ace

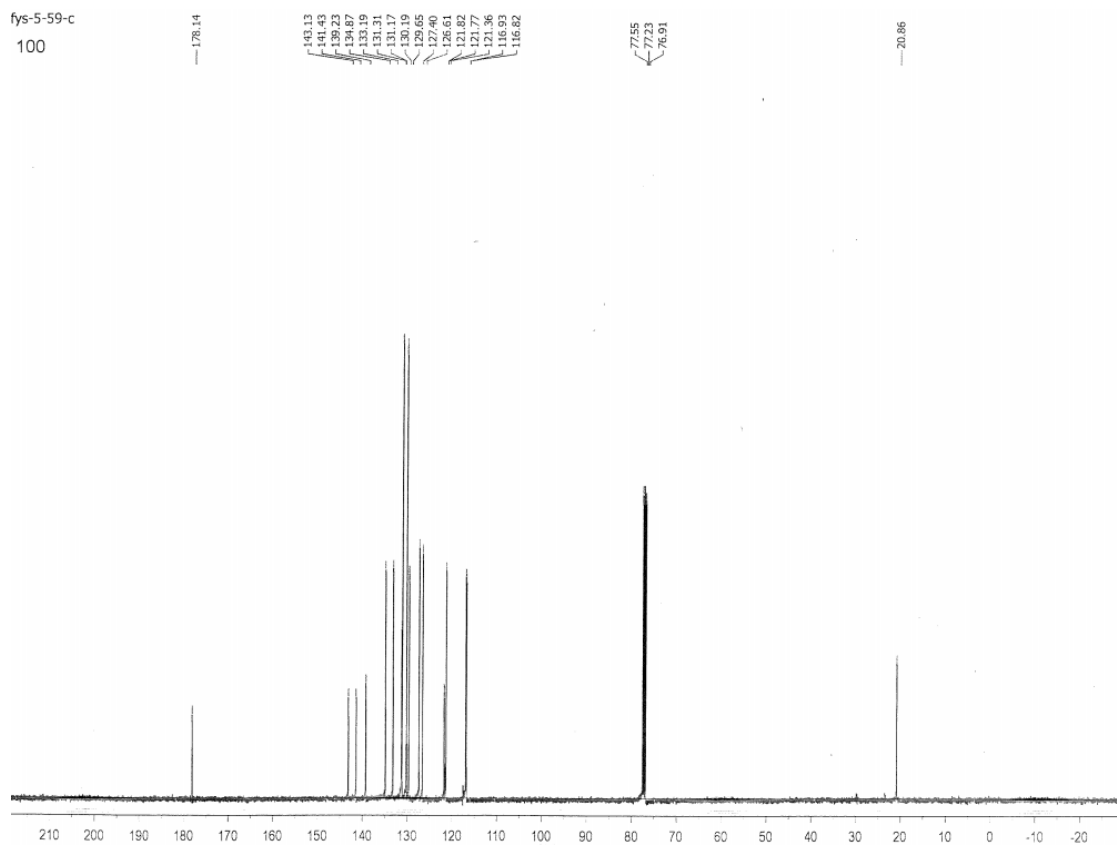


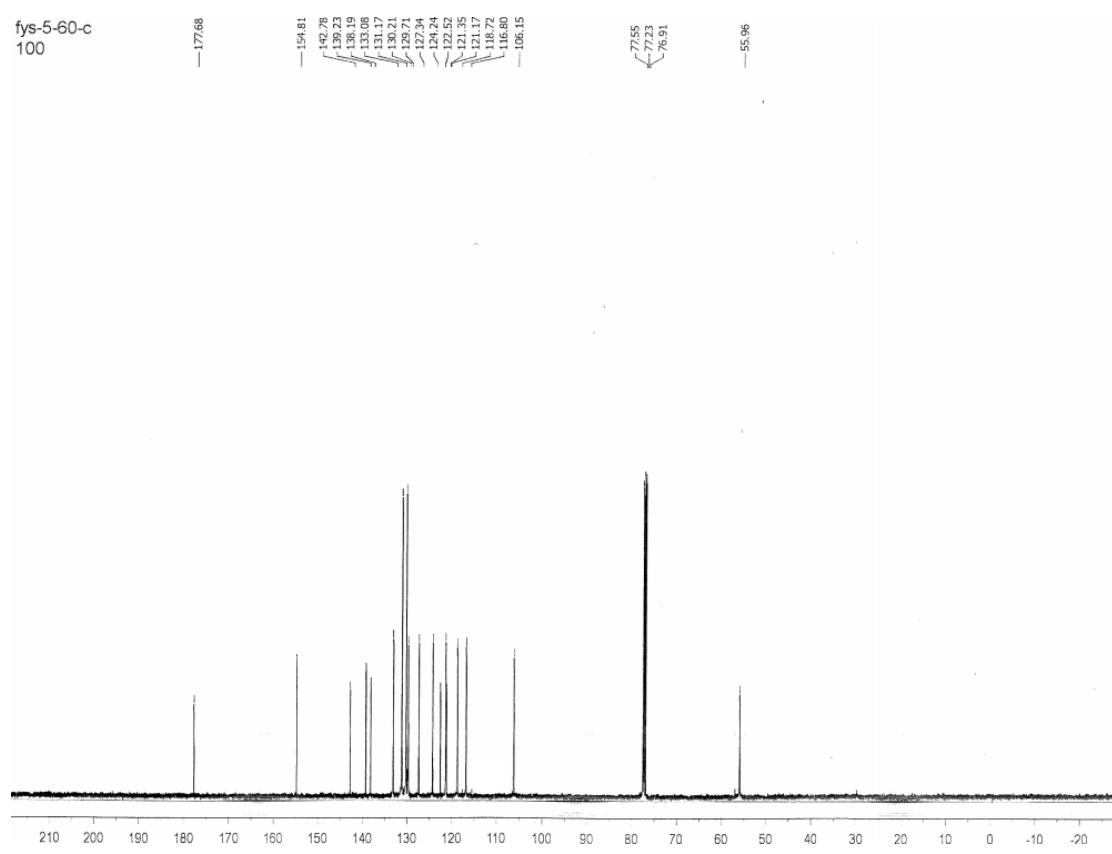
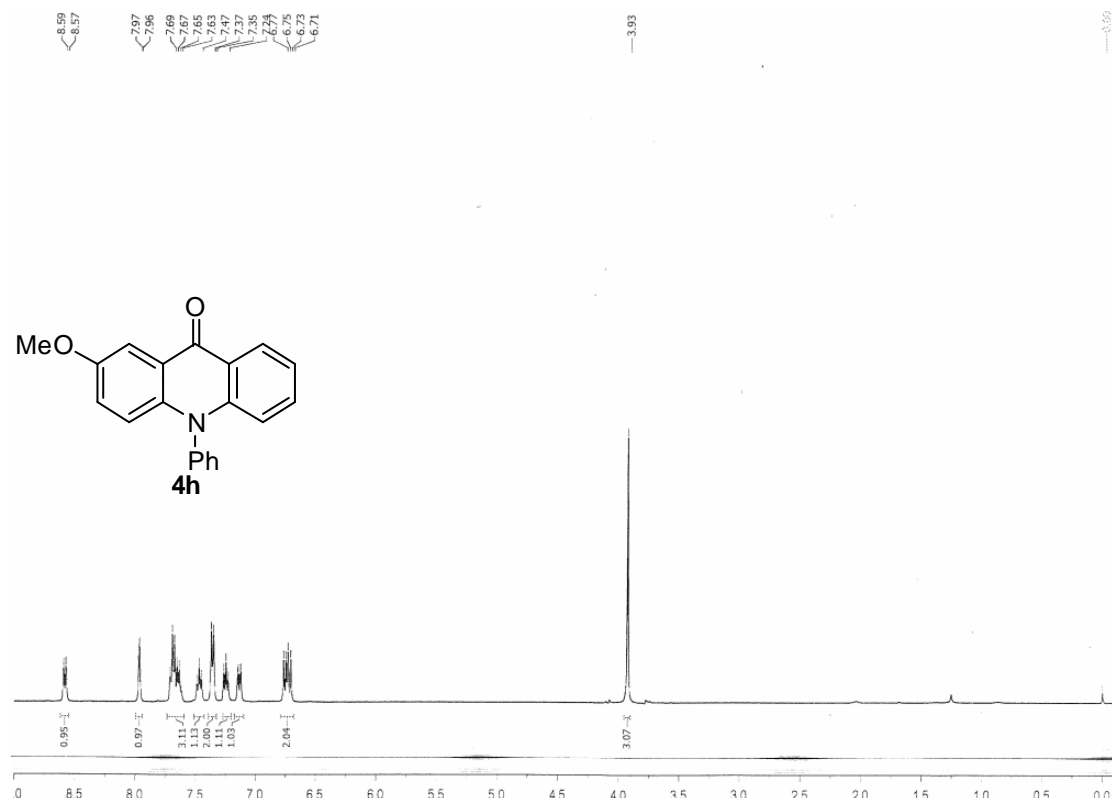


fys-5-5g  
400



fys-5-59-c  
100



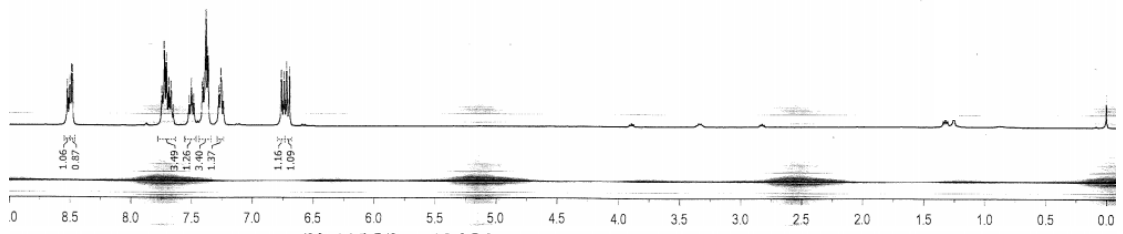
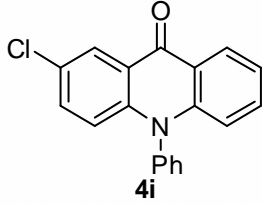




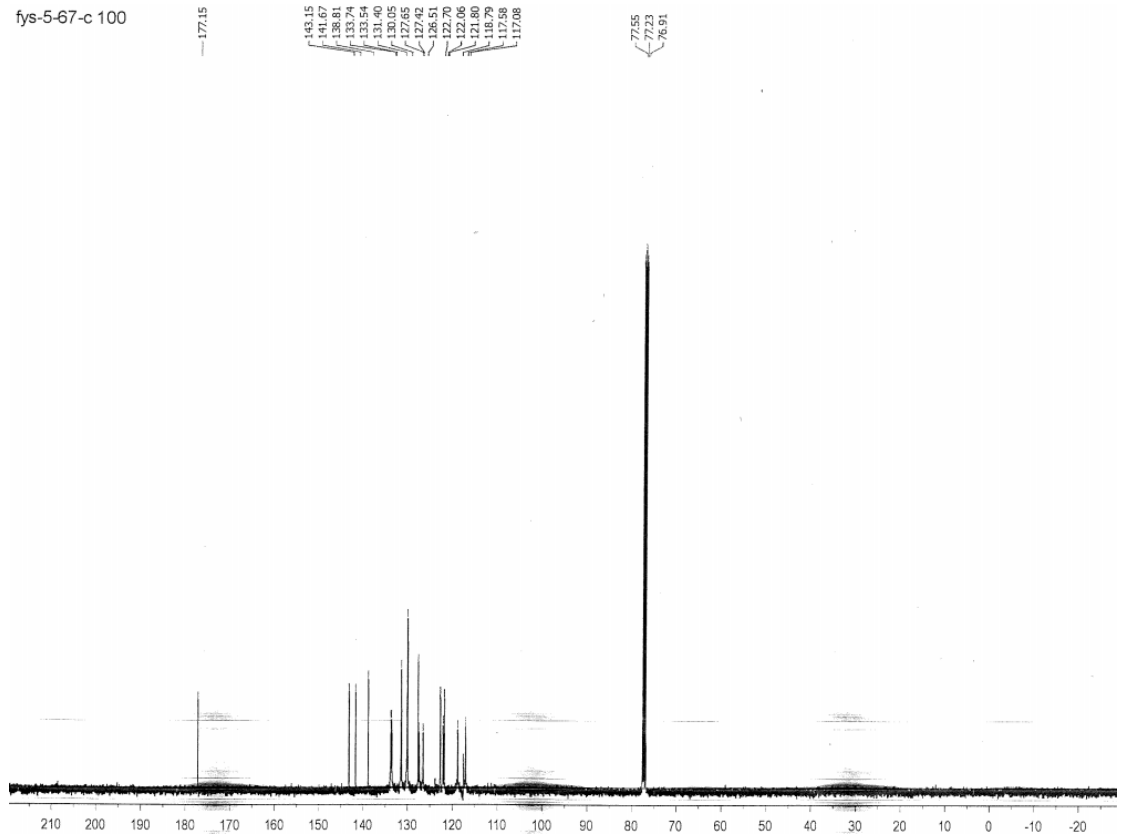
tys-5-6/ 400

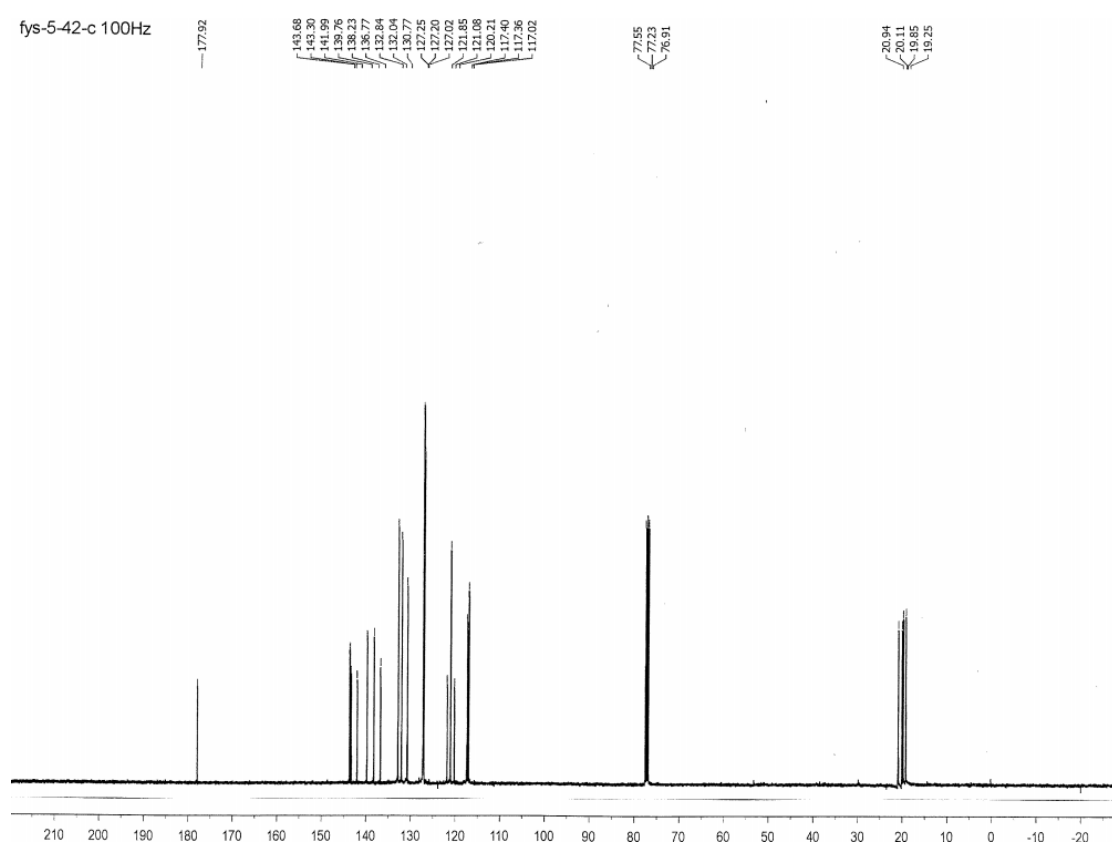
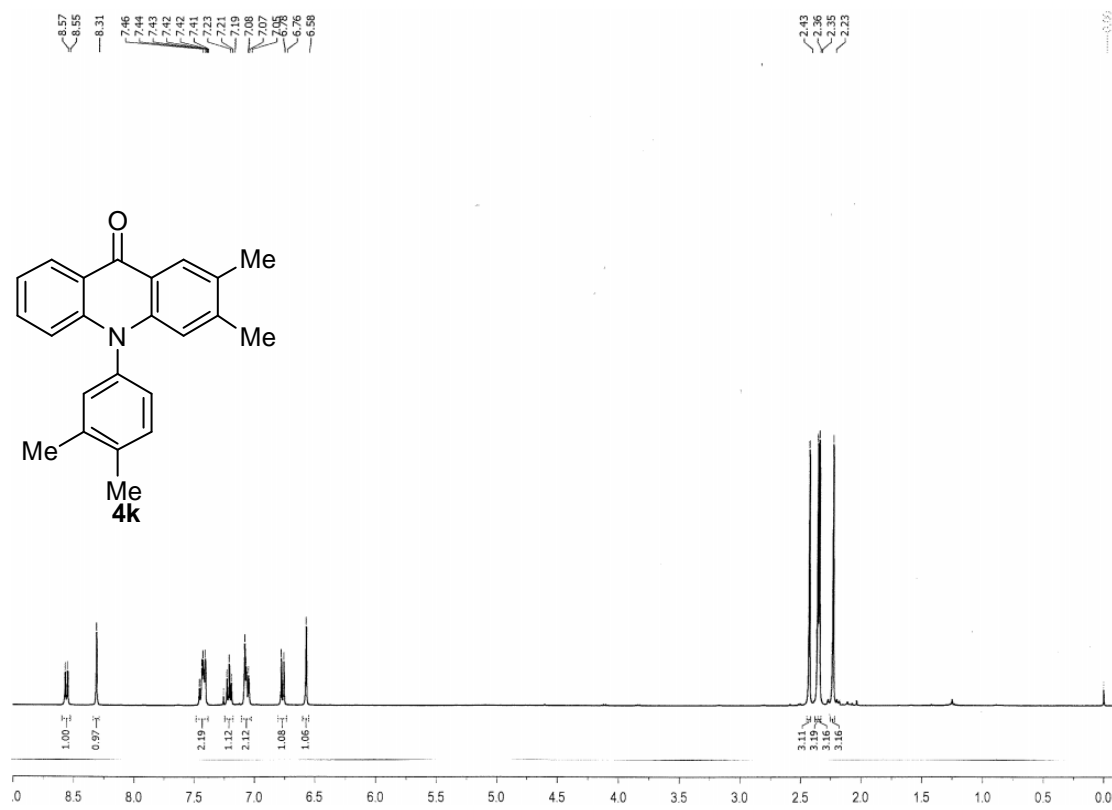
8.53  
8.51  
8.49  
8.48  
7.73  
7.71  
7.69  
7.67  
7.51  
7.42  
7.41  
7.39  
7.37  
7.27 CDCl<sub>3</sub>  
7.27  
6.77  
6.75  
6.72  
6.70

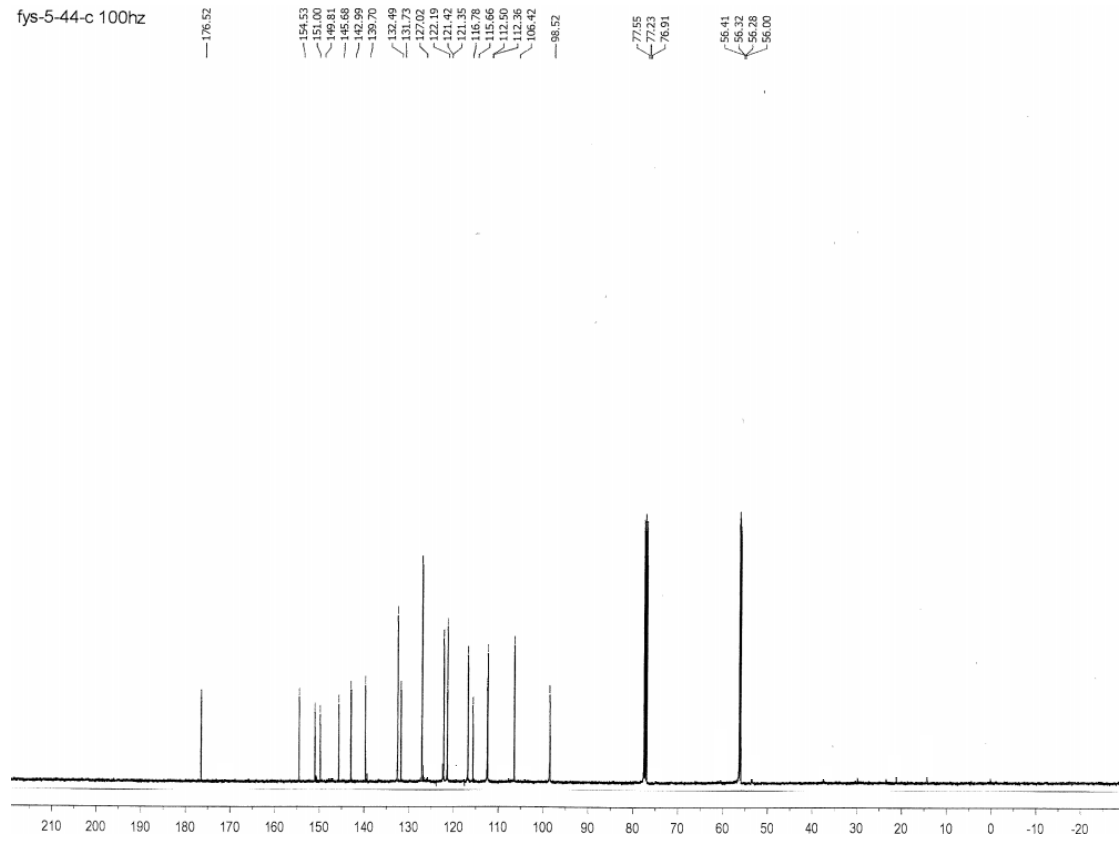
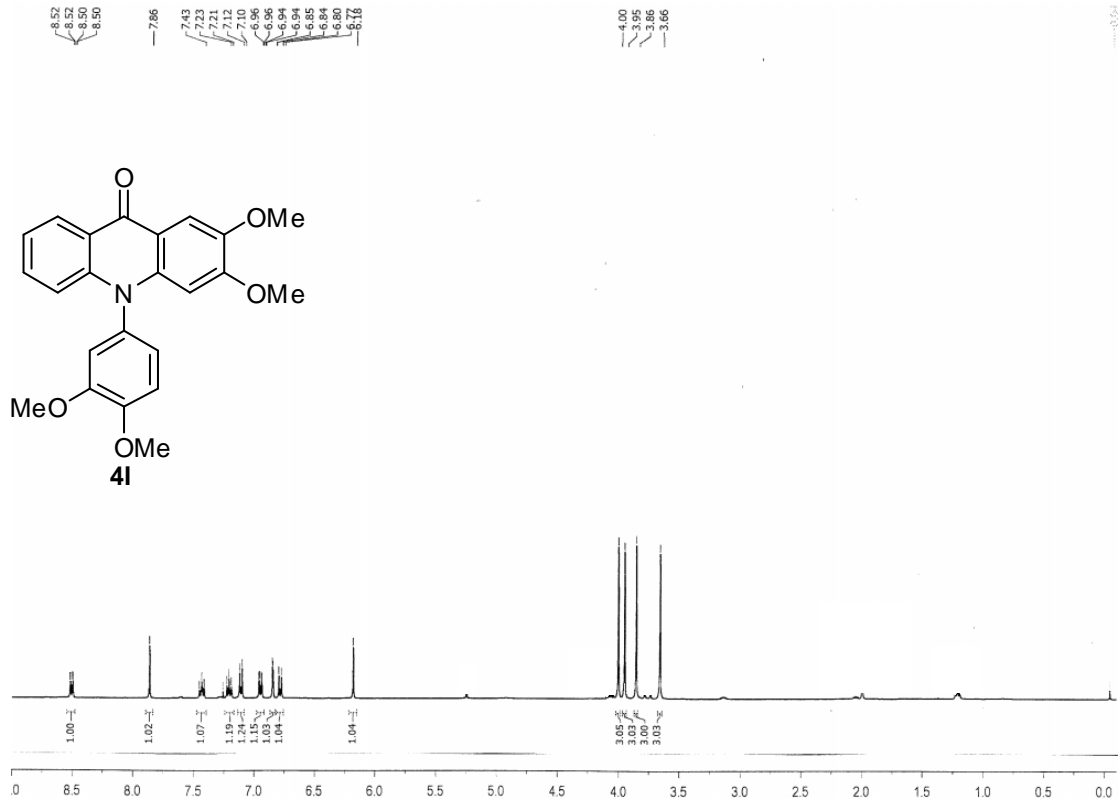
0.01



fys-5-67-c 100



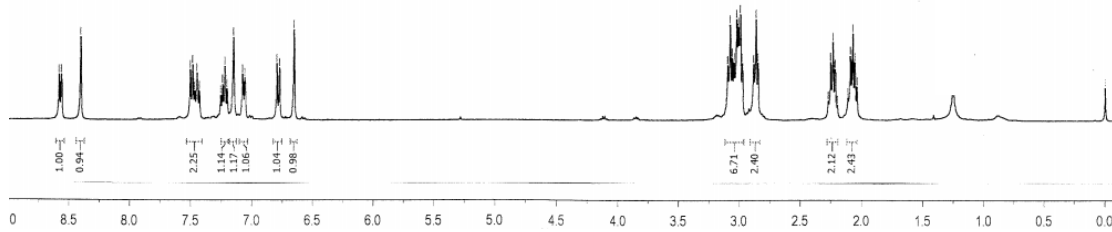
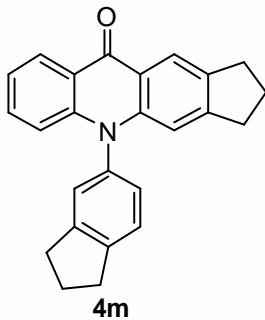




fys-5-45 400Hz

8.58  
8.56  
8.41  
7.51  
7.47  
7.47  
7.43  
7.26 CDCl<sub>3</sub>  
7.24  
7.22  
7.21  
7.15  
7.08  
7.01  
6.78  
6.66

3.10  
3.08  
3.06  
3.05  
3.03  
3.01  
3.00  
2.98  
2.89  
2.87  
2.85  
2.27  
2.24  
2.22  
2.20  
2.11  
2.10  
2.08  
2.06

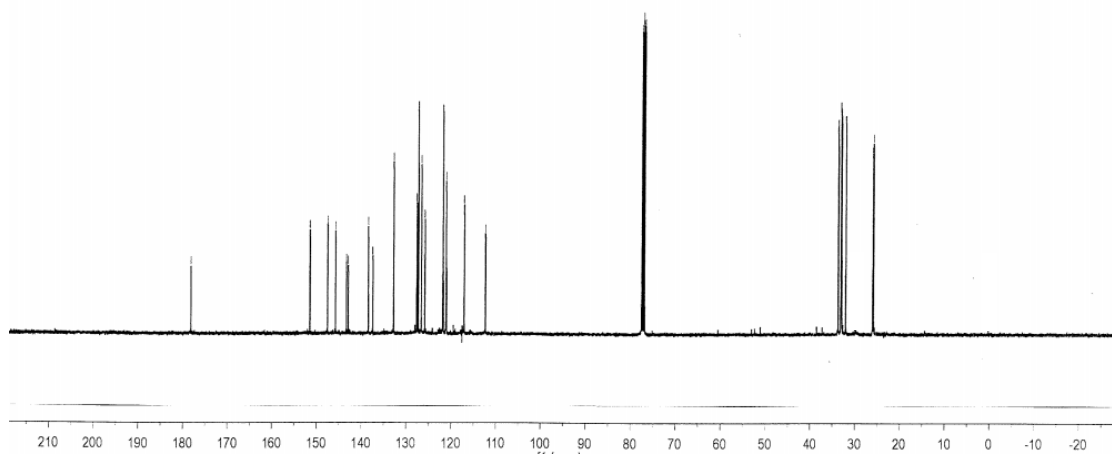


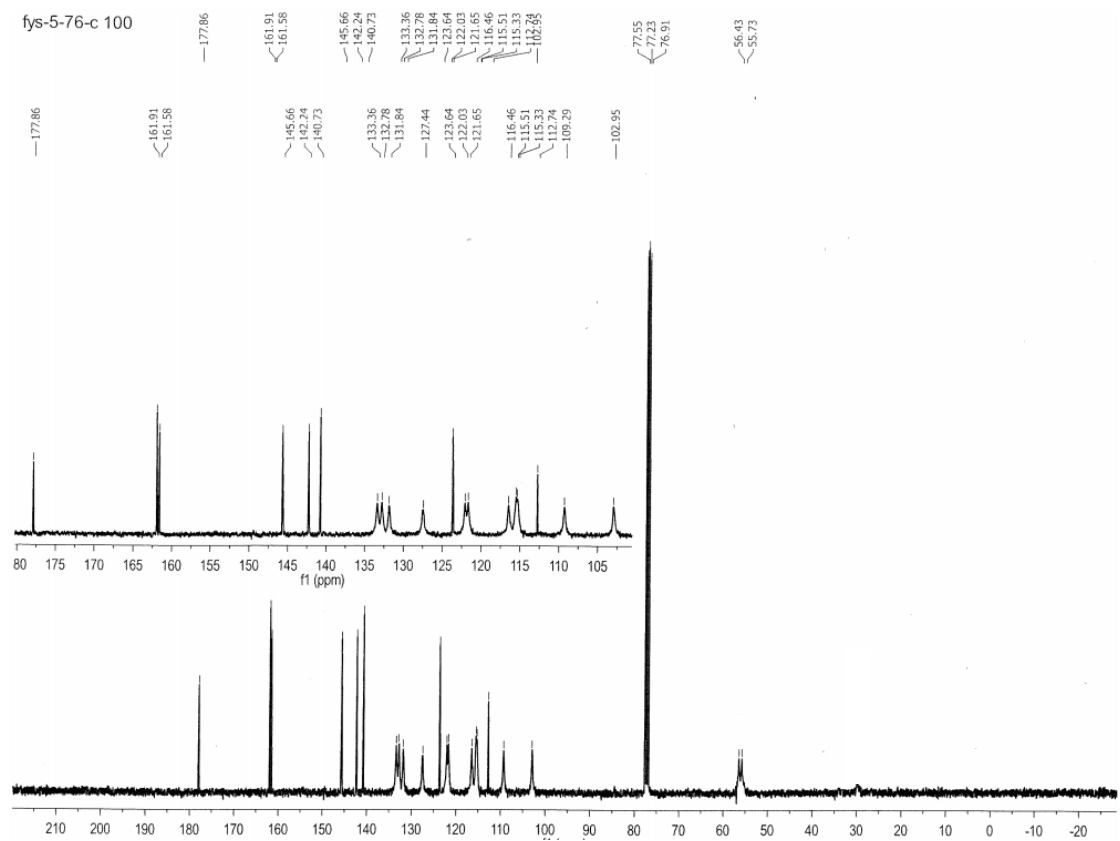
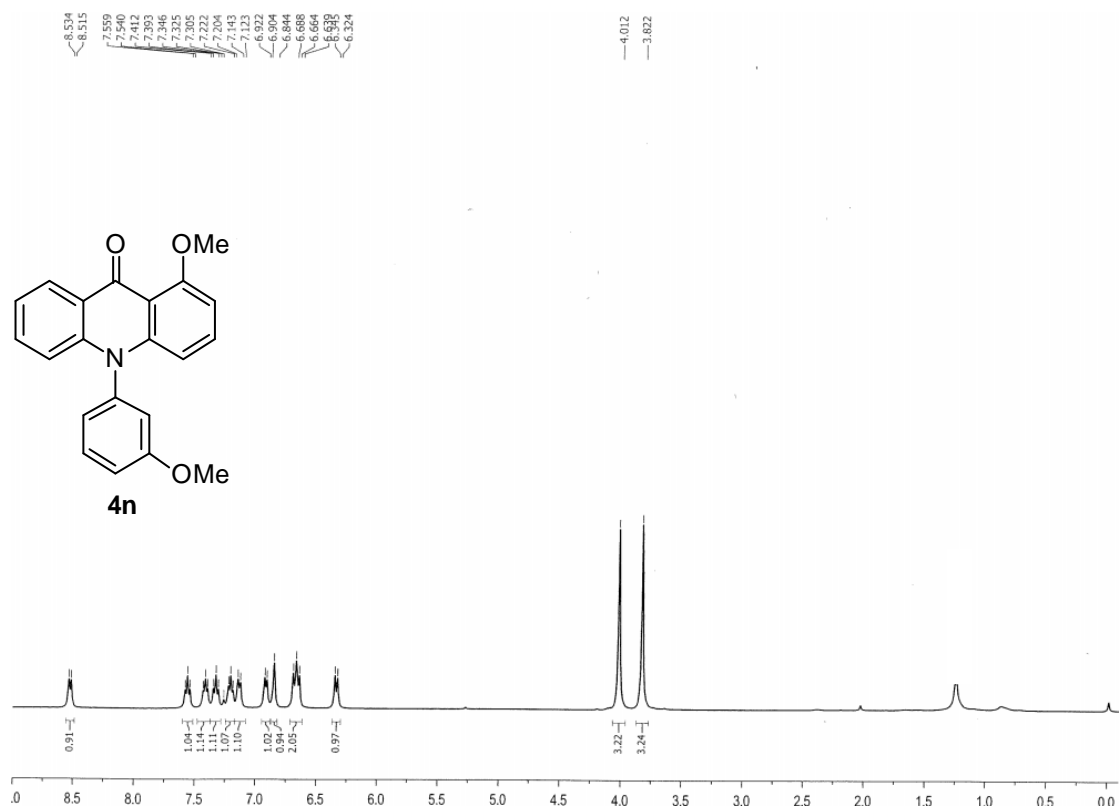
fys-5-45-c 100hz

178.19  
151.51  
147.57  
145.82  
143.36  
143.36  
138.47  
137.48  
132.83  
127.70  
127.32  
126.64  
125.87  
125.87  
121.25  
121.14  
121.01  
117.11  
112.37

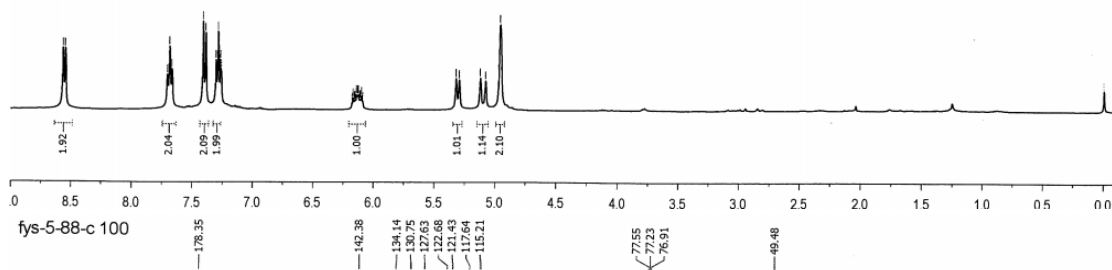
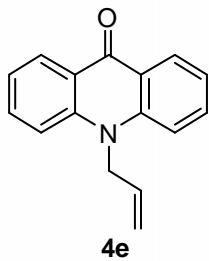
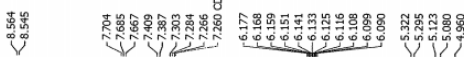
77.55  
77.23  
76.91

33.75  
33.16  
32.96  
32.06  
29.01  
25.65

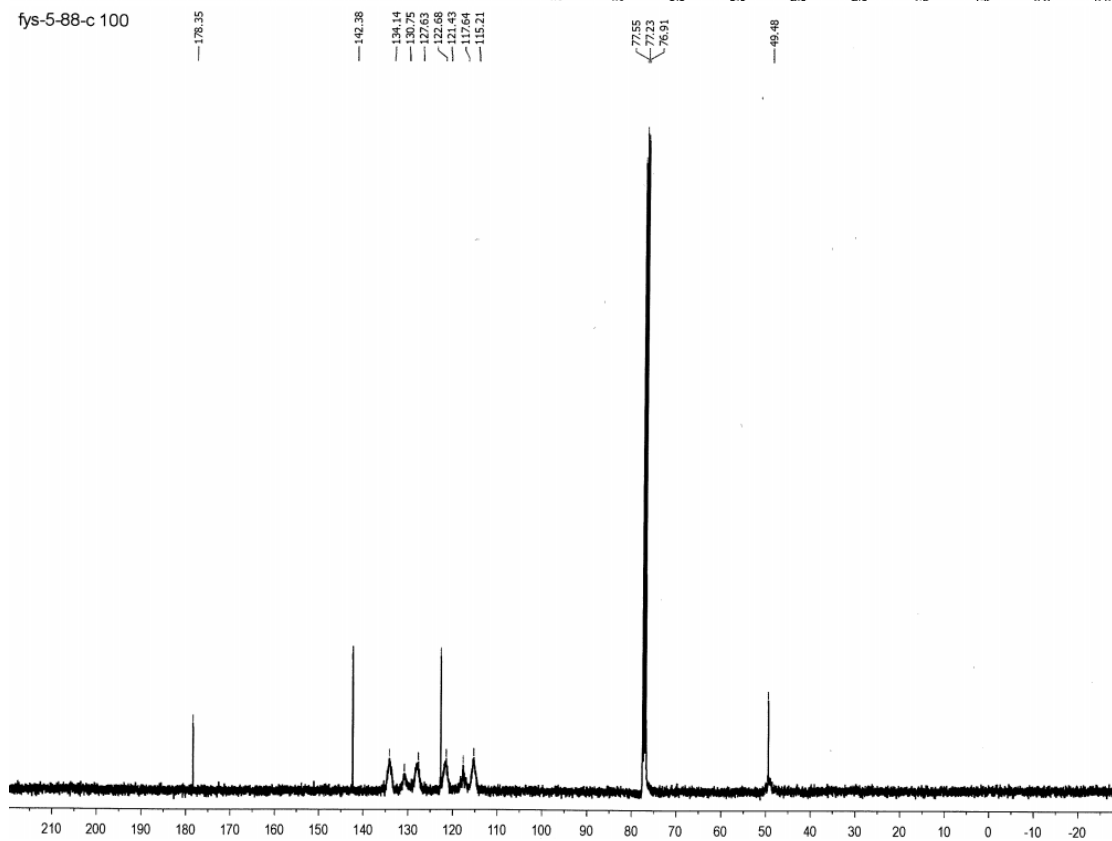




fys-5-88 400



fys-5-88-c 100

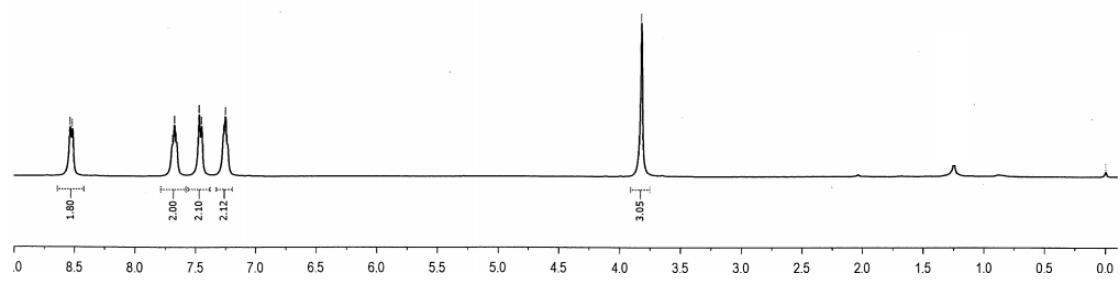
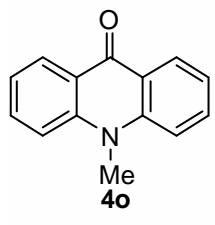


fys-0-0U 4UU

8.538  
8.520  
7.693  
7.677  
7.660  
7.472  
7.452  
7.269  
7.254  
7.237

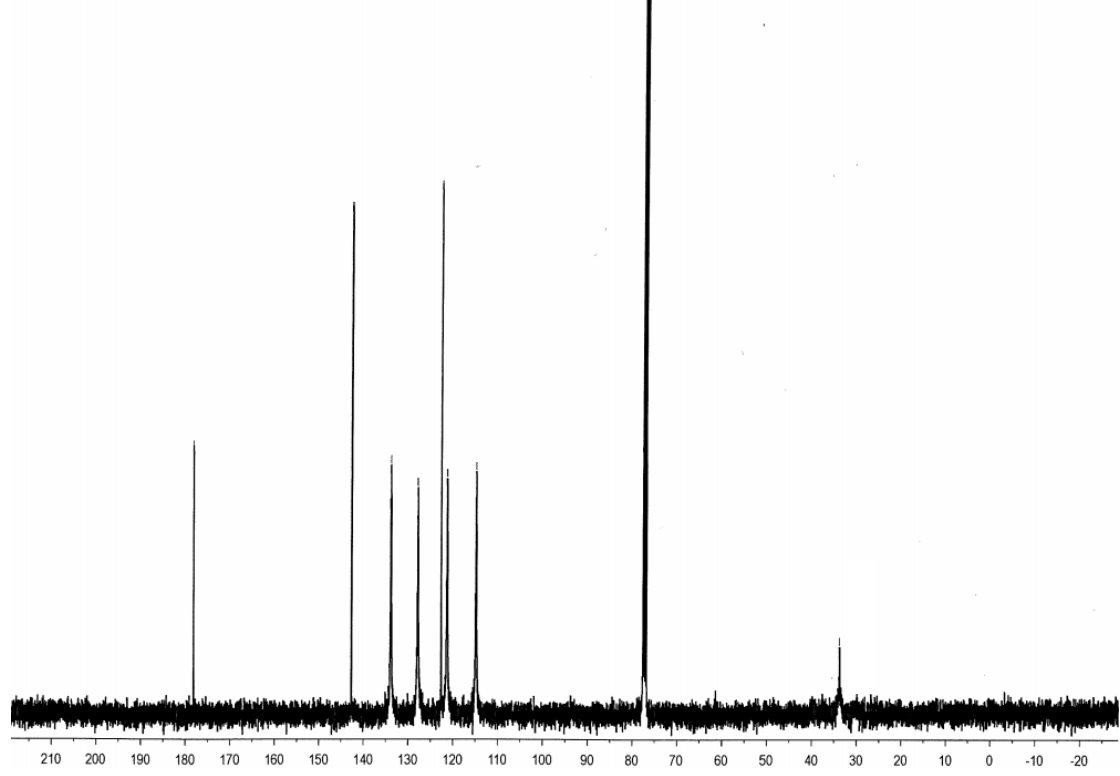
3.825

0.002



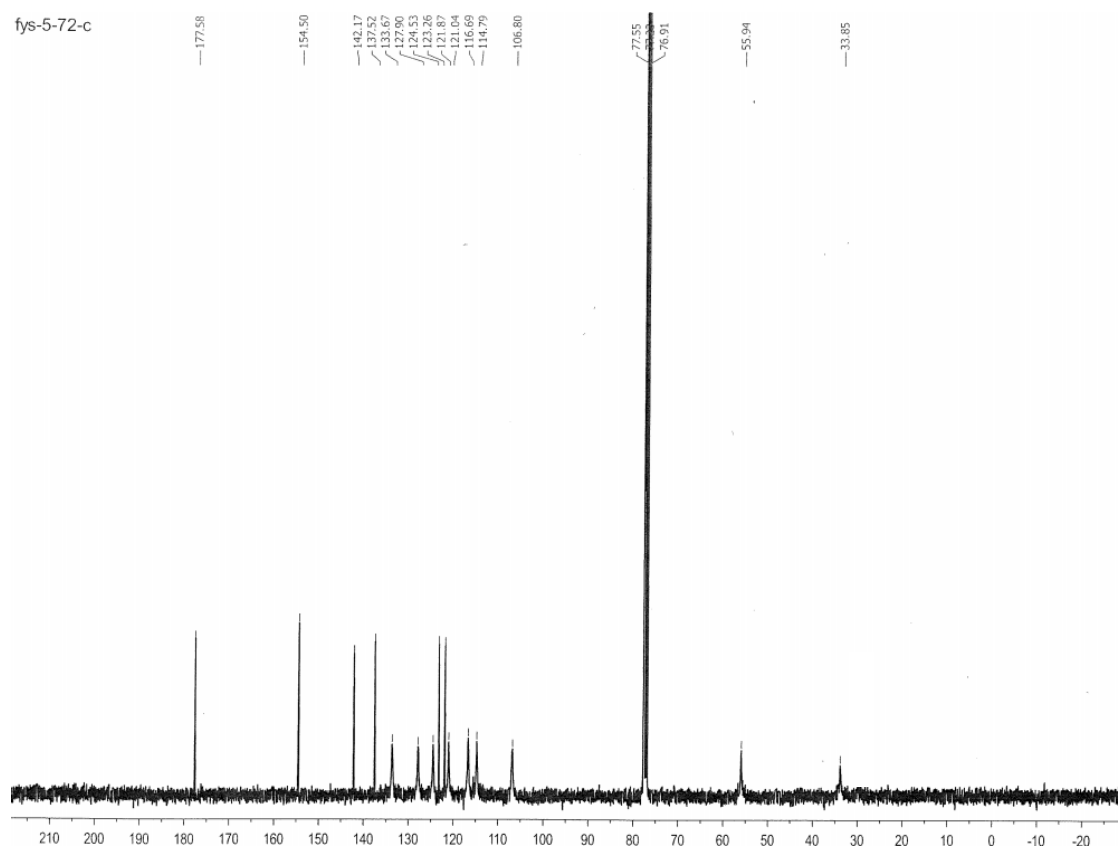
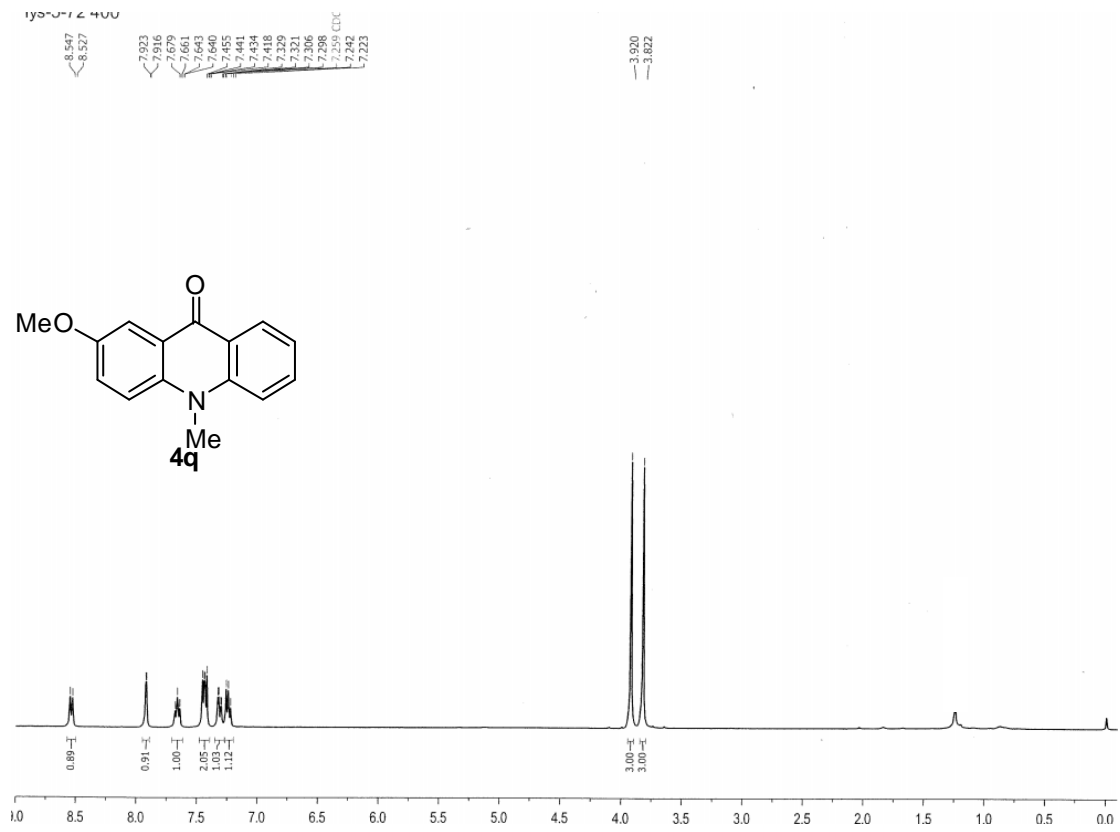
fys-5-80-c 100

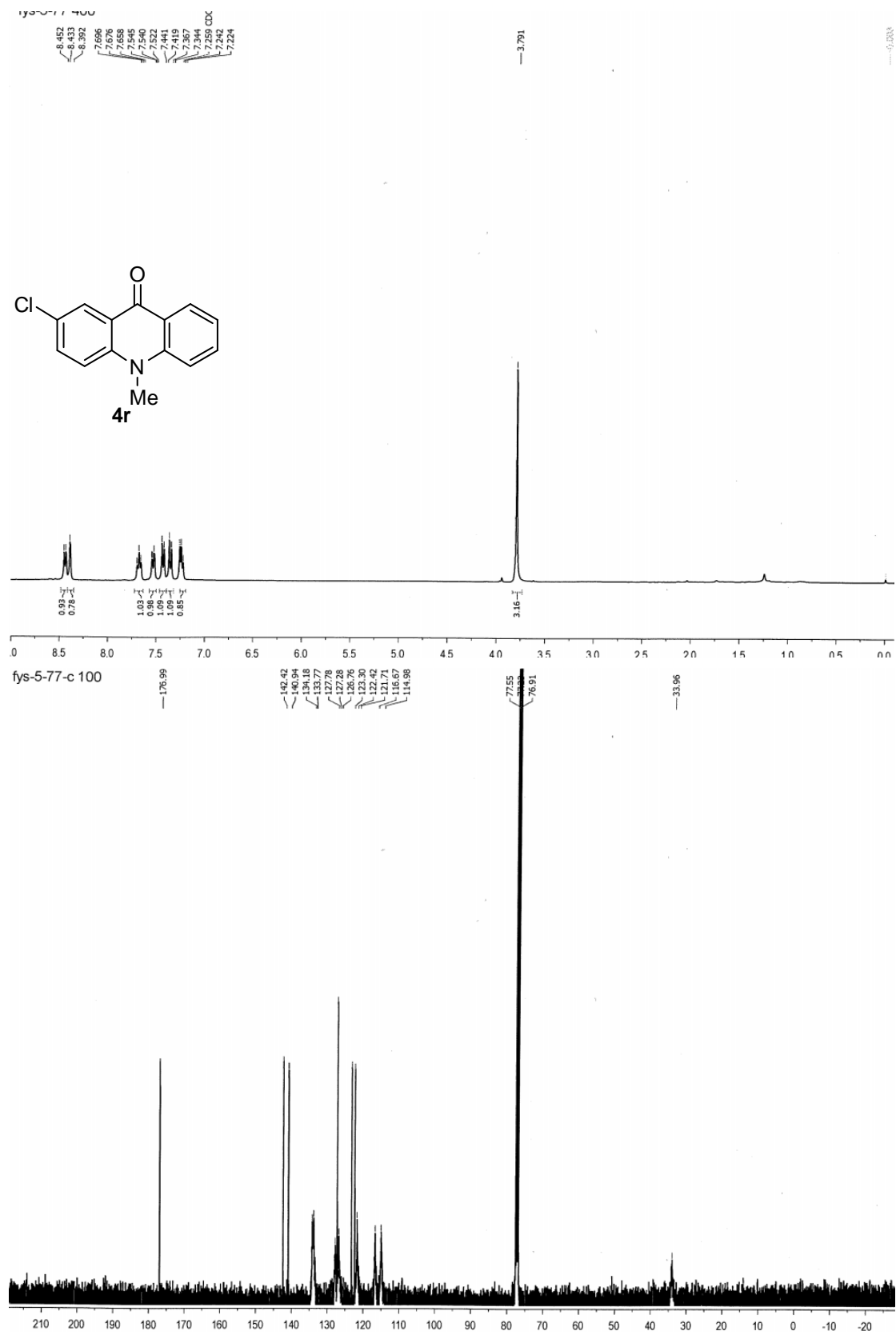
178.19  
142.67  
133.89  
127.86  
122.65  
121.35  
114.88  
77.55  
76.91  
33.76



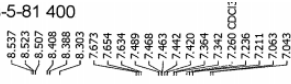




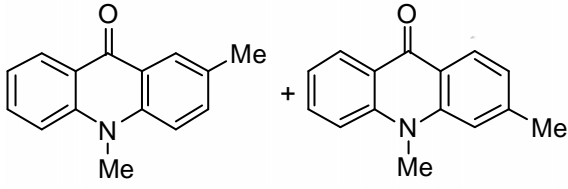




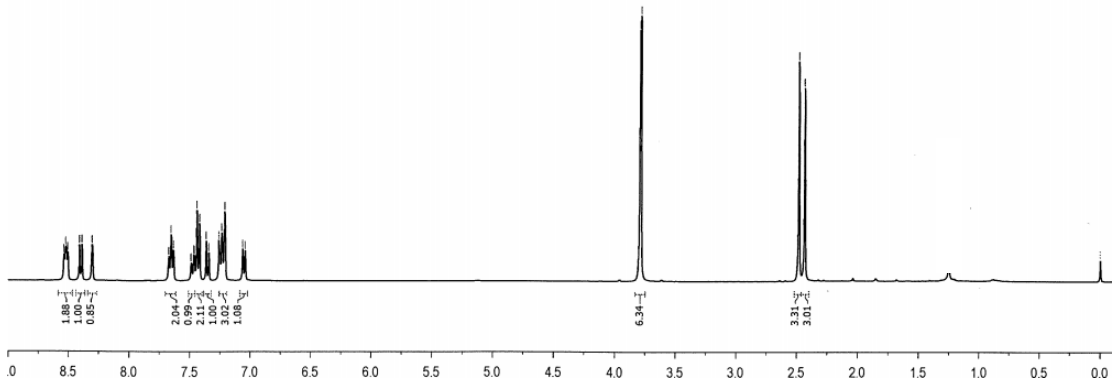
fys-5-81 400



0.000



4s + 4s'



fys-5-81-c 100

