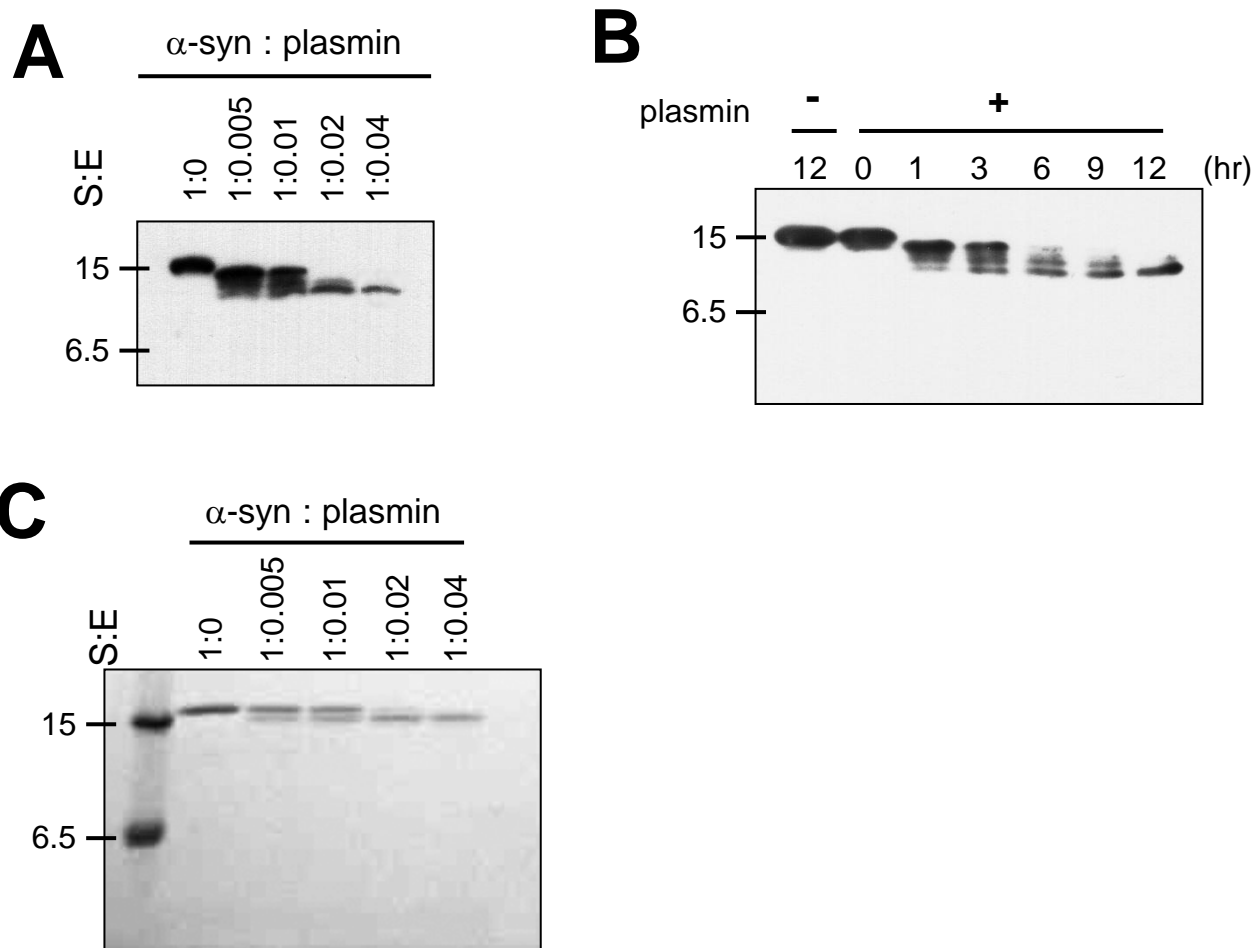


Supplemental Figure 1. Kim et al.



Supplemental Figure 1 Legend

Plasmin-derived α -syn fragments are detected by an α -syn antibody which detects the C-terminal region of α -syn or Coomassie Blue staining. A. After incubation of 1.735 μ M α -syn with plasmin at the indicated molar ratios for 12 hr at 37°C, (B) after incubation of 1.735 μ M α -syn with plasmin at the 1:0.04 molar ratio for the indicated times at 37°C, the samples were loaded into SDS-PAGE gels, then Western blots for α -syn (Santa Cruz Biotechnology, Santa Cruz, CA) were performed. C. After incubation of 1.735 μ M α -syn with plasmin at the indicated molar ratios for 12 hr at 37°C, the samples were loaded into SDS-PAGE gels, then Coomassie Blue staining was performed.

Supplemental Table I. Observed peptides by LC/MS/MS analysis

sequence	Observed molecular mass (Da)	Theoretical Molecular mass (Da)	Possible sequence matches
AKEGVVAAAEK	1071.63	1071.59	11-21
AKEGVVAAAEKTK	1300.80	1300.73	11-23
AKEGVVAAAEKTKQGVAEAAGK	2112.25	2112.15	11-33
TKEGVLYVGSK	1179.67	1179.64	33-43
TKEGVVHGVATVAEKT	1753.06	1752.97	44-60
TKEGVVHGVATVAEKTKEQVTNVGGAVVTGVTAVAQK	3662.18	3662.00	46-80
TKEGVVHGVATVAEKTKEQVTNVGGAVVTGVTAVAQKTVEGAGSIAAATGFVKK	5251.16	5249.86	46-97
EGVVHGVATVAEK	1294.72	1294.68	46-58
EGVVHGVATVAEKT	1505.90	1505.82	46-60
EGVVHGVATVAEKTKEQVTNVGGAVVTGVTAVAQK	3433.04	3432.85	46-80
EGVVHGVATVAEKTKEQVTNVGGAVVTGVTAVAQKTVEGAGSIAAATGFVKK	5021.03	5022.68	46-97
TKEQVTNVGGAVVTGVTAVAQK	2156.25	2156.18	59-80
TKEQVTNVGGAVVTGVTAVAQKTVEGAGSIAAATGFVKK	3744.24	3744.04	59-97
EQVTNVGGAVVTGVTAVAQK	1927.11	1927.03	61-80
TVEGAGSIAAATGFVK	1477.81	1477.77	81-97
TVEGAGSIAAATGFVKK	1605.91	1605.87	81-98
DQLGKNEEGAPQEGILEDMPVDPDNEAYEMPSEEGYQDYEPEA	4844.23	4843.99	98-140