

# Supporting Information

Qian et al. 10.1073/pnas.1205207109

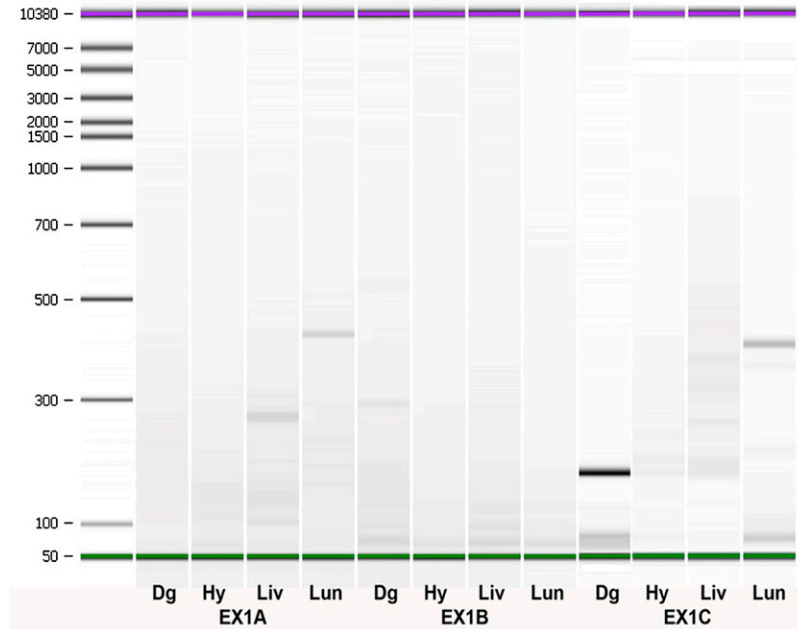


Fig. S1. Electrophoresis results of the nested PCR targeting TSS upstream of exon 2. RNAs used in CapFishing were extracted from the following tissues: dentate gyrus (Dg), hypothalamus (Hy), liver (Liv), and lung (Lun).

Table S1. Sequence of primers used in nested PCR

Name	Sequence (5'→3')	Application
5' RACE primer	GTCTACCAGGCATTTCGCTTCAT	5' RACE PCR
3'-GAPDH-R	TGAGCCCTCCACAATGCCA	5' RACE PCR control
EX1A1R	CATTTGTGTTGTTACGGTTCGG	3' target outer primer
P1-1R	TGGGAACCTGATGACATCCAG	3' target inner primer
EX1B R	TGGGCGTGCCCGGT	3' target outer primer
P2-1R	AGTGCGATGTTCAACAATCC	3' target inner primer
P3 RTmR	CAGCGAATGTCTCAGTGTC	3' target outer primer
P3-858R	CAGTTCTCCGATTGGGAG	3' target inner primer
EX3 U1-R	TGGAGTAAGAGGACACTTGC	3' target inner primer
EX3-R	CATTCTGCTGATGAATCTG	3' target outer primer
EX4-48R	TCTAACACAGTTACGGTTAC	3' target inner primer
EX4-71R	CTGTAACACAAGCCAGGGTC	3' target outer primer
EX5-R	CTCACGTTGTCAAGAAGCAG	3' target inner primer
EX6-15R	CTCAGGATAACAGGTCCTGTC	3' target outer primer

Primers in green, pink, blue, and red represent 3' primer pairs targeting exons 1A, 1B, 1C, and 3–6, respectively.