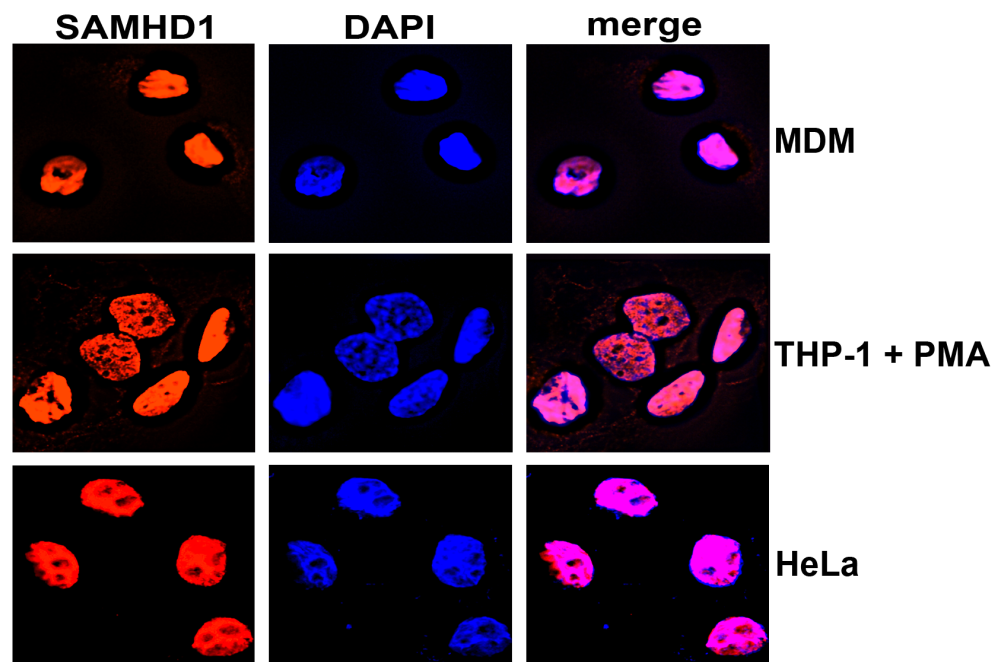


**Additional File 1. Intracellular distribution of SAMHD1 in different types of**

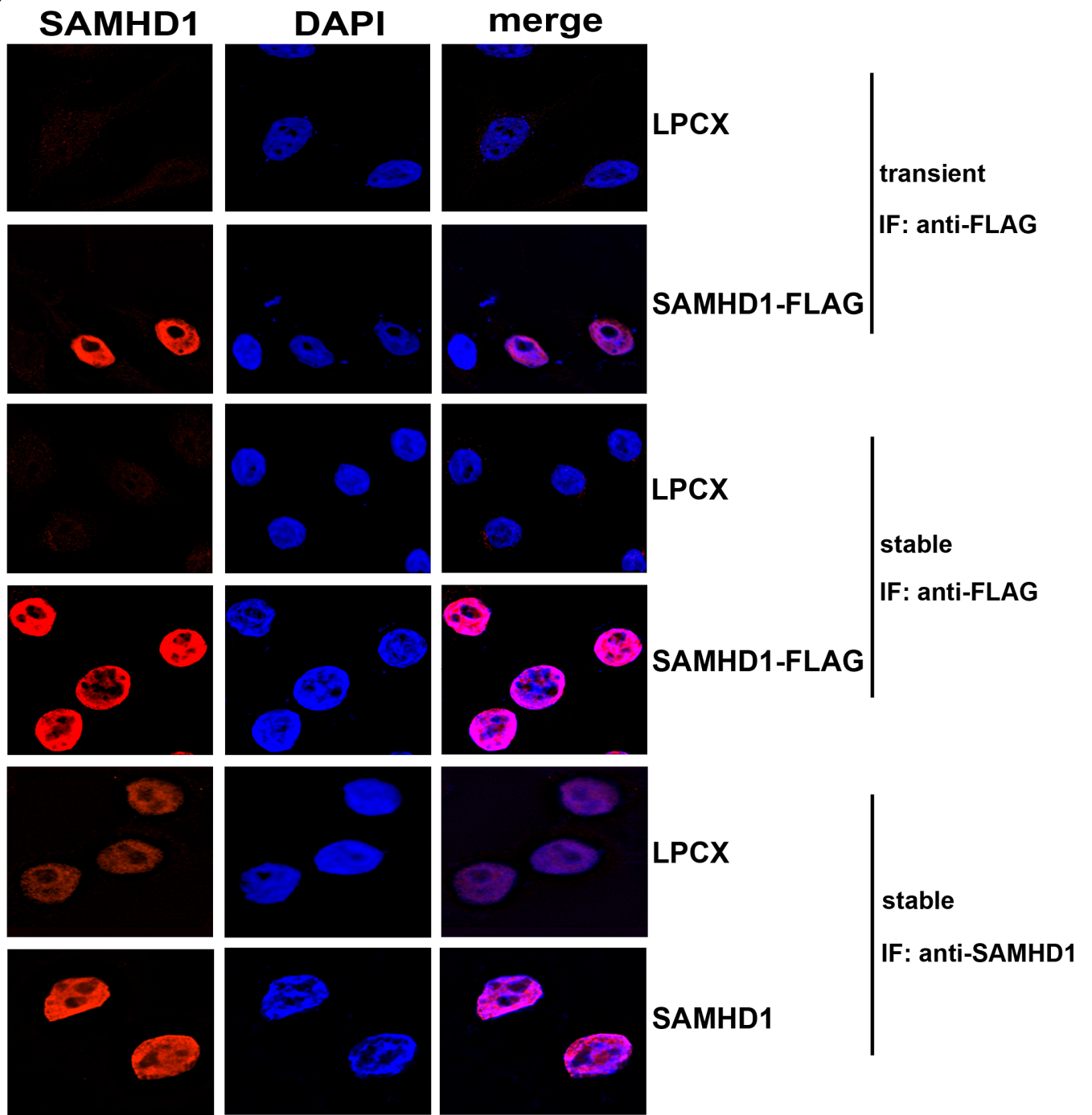
**cells. (A)** The intracellular distribution of endogenous SAMHD1 was studied in human monocyte derived macrophages (MDM), PMA-treated human THP-1 monocytic cells, and human HeLa cells. Cells were fixed and immunostained using antibodies against SAMHD1(red), as described in Materials and Methods. The cellular nuclei was stained using DAPI (blue). Image quantification for three independent experiments is shown in Table 1. **(B)** Localization of exogenously expressed SAMHD1 in HeLa cells. Transfected or transduced cells with plasmids expressing the indicated proteins and immunostained using antibodies against SAMHD1(red) or FLAG(red), as indicated. Similarly, the nuclei were stained with DAPI (blue). Image quantification for three independent experiments is shown in Table 1. **(C)** Expression of SAMHD1 in the indicated cells was analyzed by Western blotting using antibodies against SAMHD1 or FLAG. As a control, cell lysates were Western blotted using antibodies against GAPDH. **(D)** HeLa cells transfected with SAMHD1-FLAG were stained using antibodies against FLAG(red) and fibrilarin (green). DAPI was used to label the cellular nuclei. Similar results were obtained in three independent experiments and a representative experiment is shown.

**A**



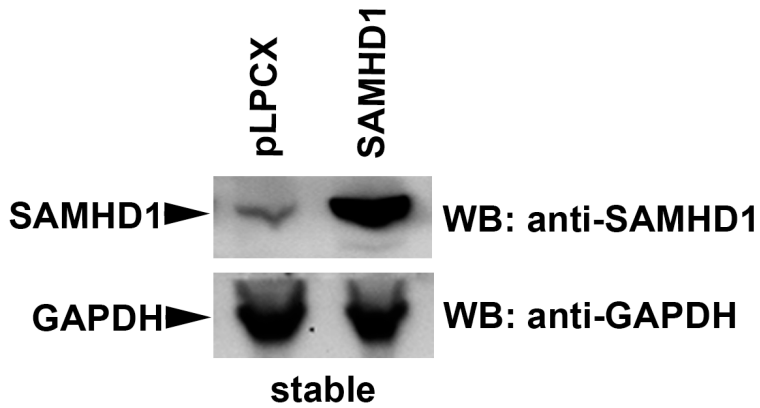
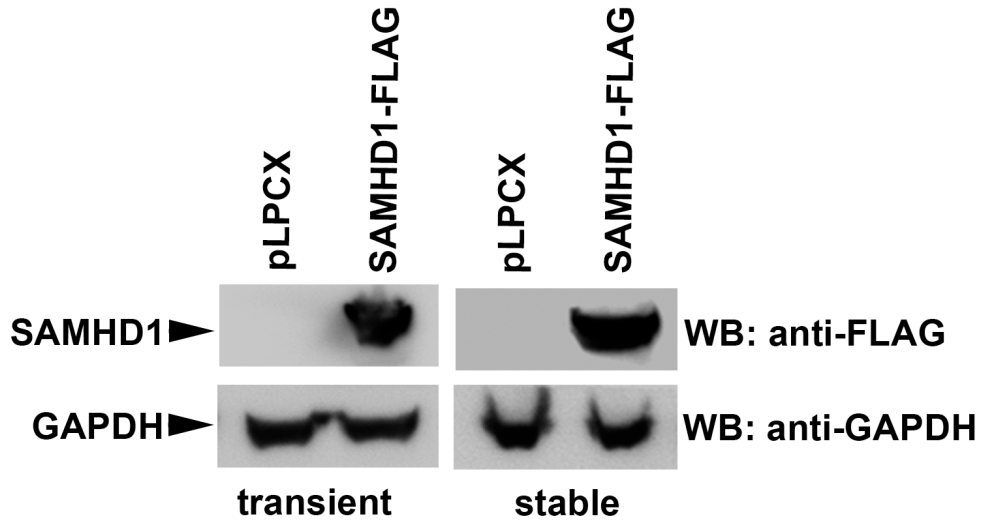
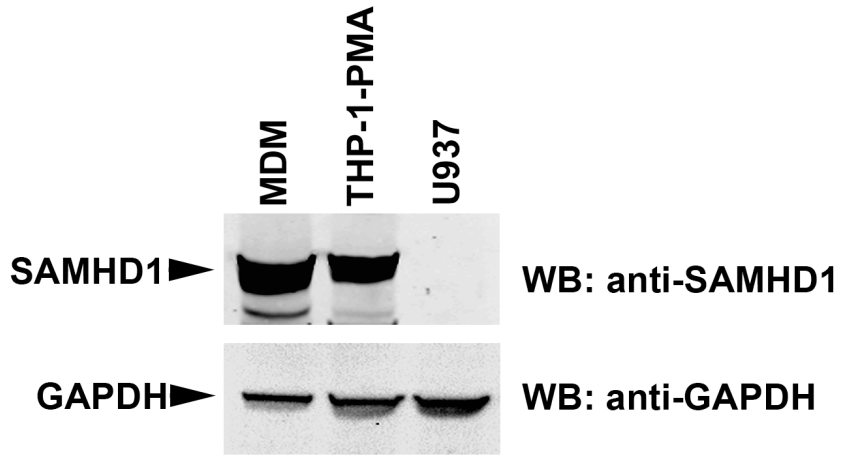
**AF1**

**B**



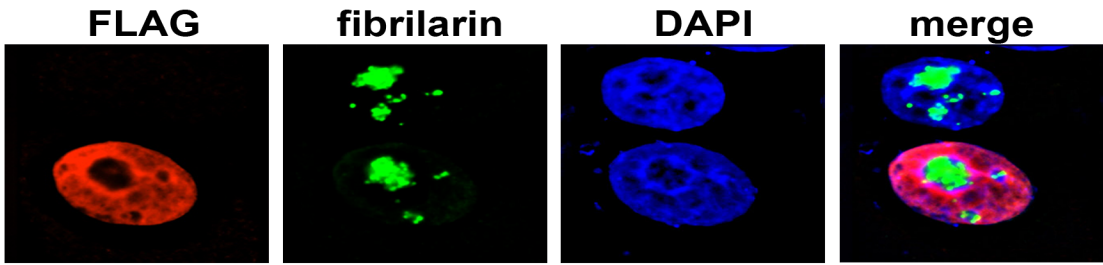
**AF1**

**C**



**AF1**

**D**



**AF1**