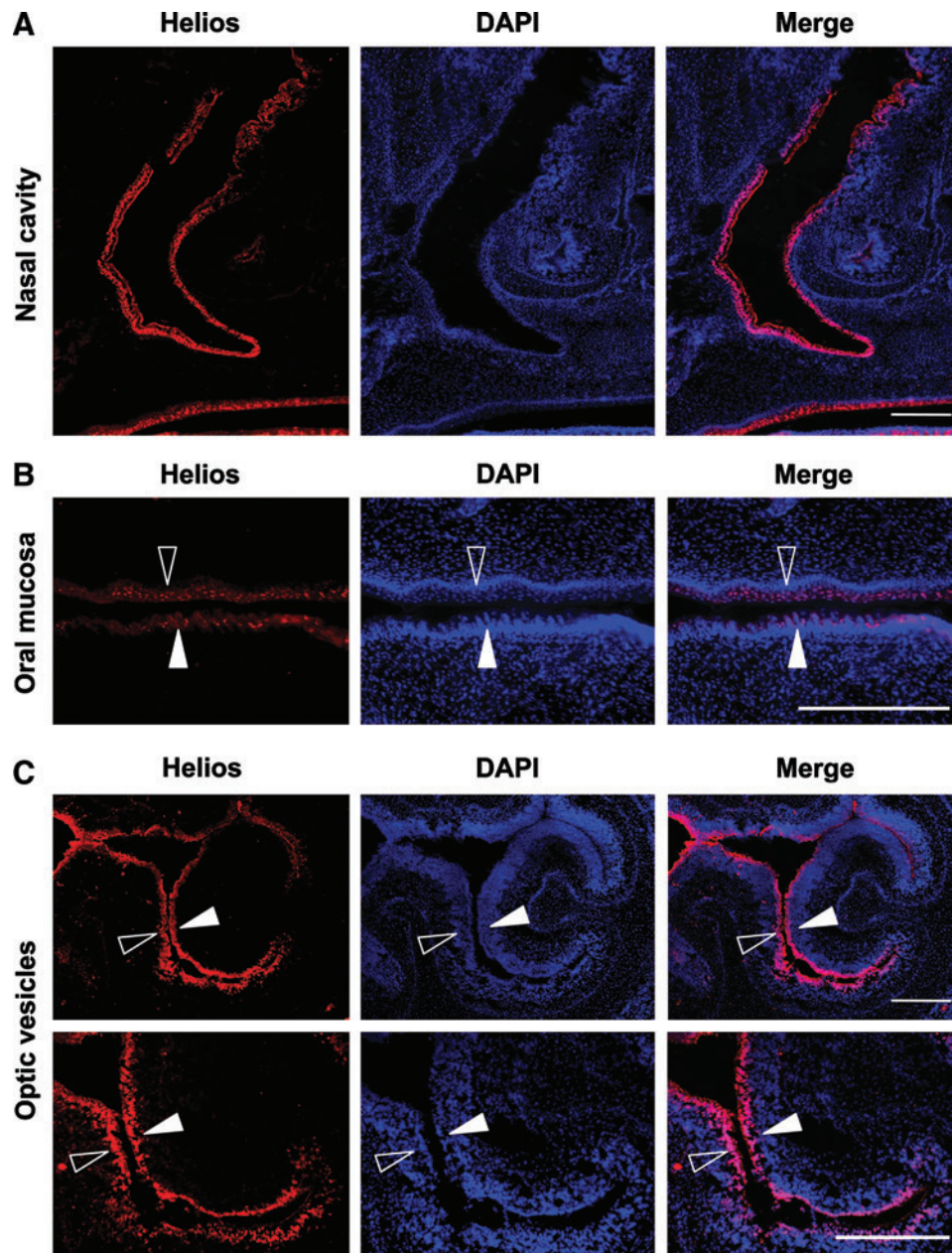
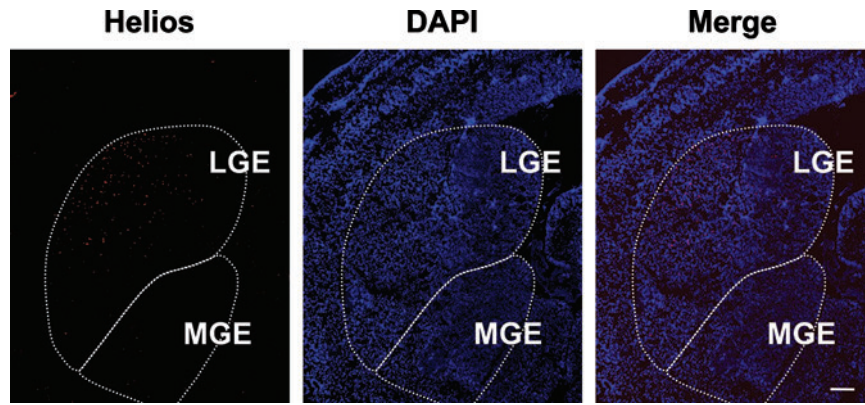


Supplementary Data



SUPPLEMENTARY FIG. S1. *Helios* is expressed in sensitive organs during embryonic development. *Helios* is expressed in the nasal (**A**) and the oral mucosa (**B**). Note that *Helios* is located in the palate (open arrowheads; **B**) and in the taste buds (closed arrowheads; **B**). This zinc finger transcription factor is also expressed in the optic vesicles at E16.5 (**C**). Within this structure, *Helios* is expressed in the pigmented layer (open arrowheads; **C**) and in the nervous layer of the retina (closed arrowheads; **C**). Scale bars: 200 μm .



SUPPLEMENTARY FIG. S2. Specific expression of *Helios* in the ventral telencephalon. *Helios* is exclusively detected in the LGE at E14.5 and no signal can be observed in the MGE. LGE: lateral ganglionic eminence; MGE: medial ganglionic eminence. Scale bars 500 μm .