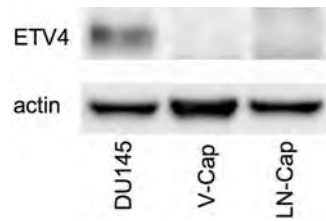


Supplementary Figure 1



Supplementary Figure 1.

ETV4 western blot analysis of three human prostate cell lines: *DU145*, *V-Cap* and *LN-Cap*. The 54 kD *ETV4* band is present in the *DU145* cell line and not in the *V-Cap* and *LN-Cap* cell lines that express undetectable levels of *ETV4* mRNA.