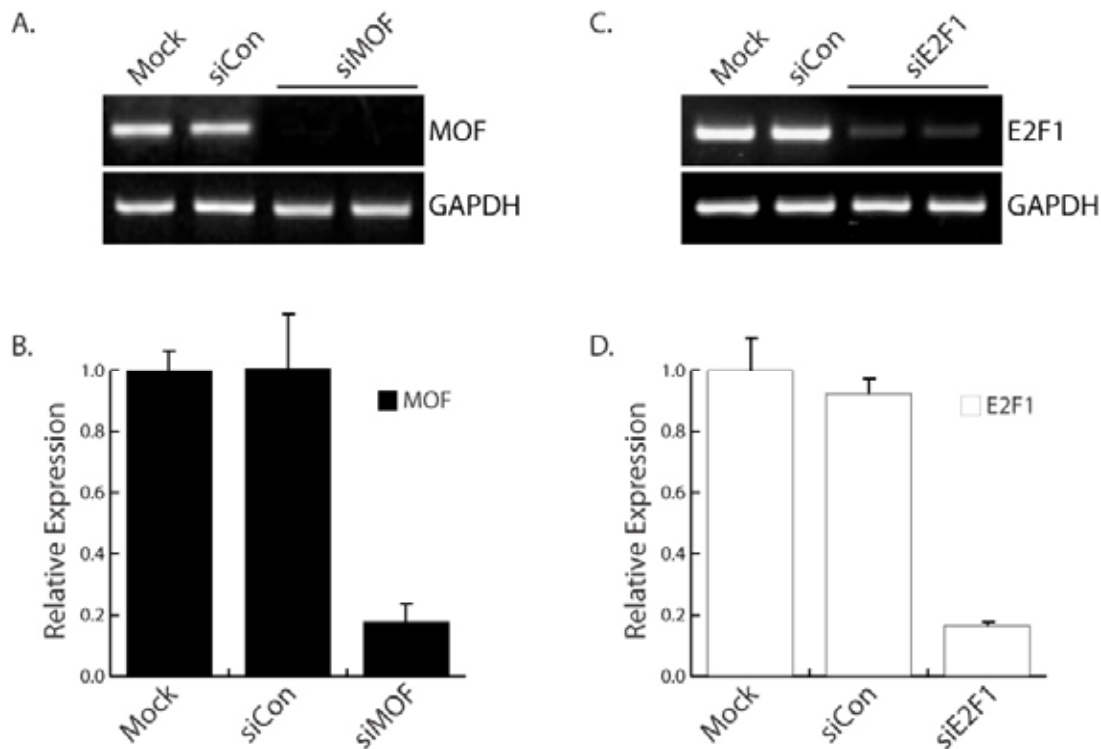


## SUPPLEMENTARY INFORMATION



**Supplementary Fig. (1). Efficient knockdown of MOF and E2F1 by RNAi.** (A) PC-3 cells were transfected at 50 nM siCon or siMOF for 72 hours. Mock treatments were transfected in the absence of siRNA. MOF and GAPDH mRNA levels were assessed by standard RT-PCR. GAPDH served as a loading control. (B) Relative expression of MOF was determined by real-time PCR (mean  $\pm$  standard error from three independent experiments). Values of MOF were normalized to GAPDH. (C) PC-3 cells were transfected at 50 nM siCon or siE2F1 for 72 hours. E2F1 and GAPDH transcript levels were assessed by standard RT-PCR. (D) Relative expression of E2F1 was determined by real-time PCR (mean  $\pm$  standard error from three independent experiments).

**Supplementary Table 1. Duplex RNAs and Oligonucleotide Sequences**

<b>saRNA/siRNA</b>	<b>Sequence (5' - 3')*</b>
siMOF S	GUGAUCCAGUCUCGAGUGAUU
siMOF AS	UCACUCGAGACUGGAUCACUU
siE2F1 S	UGGACUCUUCGGAGAACUU [dT] [dT]
siE2F1 AS	AAGUUCUCCGAAGAGUCCA [dT] [dT]
siAgo1 S	GAGAAGAGGUGCUCAAGAA [dT] [dT]
siAgo1 AS	UUCUUGAGCACCUCUUCUC [dT] [dT]
siAgo2 S	GCACGGAAGUCCAUCUGAA [dT] [dT]
siAgo2 AS	UUCAGAUGGACUUCGUGC [dT] [dT]
siAgo3 S	GAAAUUAGCAGAUUGGUAA [dT] [dT]
siAgo3 AS	UUACCAAUCUGCUAAUUUC [dT] [dT]
siAgo4 S	GGCCAGAACUAAUAGCAAU [dT] [dT]
siAgo4 AS	AUUGCUAUUAGUUCUGGCC [dT] [dT]
siCon S	UUCUCCGAACGUGUCACGU [dT] [dT]
siCon AS	ACGUGACACGUUCGGAGAA [dT] [dT]
dsEcad-215 S	AACCGUGCAGGUCCCAUAA [dT] [dT]
dsEcad-215 AS	UUAUGGGACCUGCACGGUU [dT] [dT]
dsP21-322 S	CCAACUCAUUCUCCAAGUA [dT] [dT]
dsP21-322 AS	UACUUGGAGAAUGAGUUGG [dT] [dT]
dsControl S	ACUACUGAGUGACAGUAGA [dT] [dT]
dsControl AS	UCUACUGUCACUCAGUAGU [dT] [dT]
dsEcad-215-S-5'Bio S	Bio-AACCGUGCAGGUCCCAUAA [dT] [dT]
dsEcad-215-S-5'Bio AS	UUAUGGGACCUGCACGGUU [dT] [dT]
dsEcad-215-AS-5'Bio S	AACCGUGCAGGUCCCAUAA [dT] [dT]
dsEcad-215-AS-5'Bio AS	Bio-UUAUGGGACCUGCACGGUU [dT] [dT]
dsP21-322-S-5'Bio S	Bio-CCAACUCAUUCUCCAAGUA [dT] [dT]
dsP21-322-S-5'Bio AS	UACUUGGAGAAUGAGUUGG [dT] [dT]

dsP21-322-AS-5'Bio S dsP21-322-AS-5'Bio AS	CCAACUCAUUCUCCAAGUA [dT] [dT] Bio-UACUUGGAGAAUGAGUUGG [dT] [dT]
dsEcad-215-S-MM S dsEcad-215-S-MM AS	AACCGUGCAGGUCCCAUAA [dT] [dT] UUAUGGGACCUGCACGGUA [dT] [dT]
dsEcad-215-AS-MM S dsEcad-215-AS-MM AS	AACCGUGCAGGUCCCAUAU [dT] [dT] UUAUGGGACCUGCACGGUU [dT] [dT]
dsP21-322-S-MM S dsP21-322-S-MM AS	CCAACUCAUUCUCCAAGUA [dT] [dT] UACUUGGAGAAUGAGUUGC [dT] [dT]
dsP21-322-AS-MM S dsP21-322-AS-MM AS	CCAACUCAUUCUCCAAGUU [dT] [dT] UACUUGGAGAAUGAGUUGG [dT] [dT]
dsP21-322-AS-5'Bio-S-MM S dsP21-322-AS-5'Bio-S-MM AS	CCAACUCAUUCUCCAAGUU [dT] [dT] Bio-UACUUGGAGAAUGAGUUGG [dT] [dT]
dsP21-322-S-2'OMe S dsP21-322-S-2'OMe AS	CCAACUCAmUmUCUCCAAGUA [dT] [dT] UACUUGGAGAAUGAGUUGG [dT] [dT]
dsP21-322-AS-2'OMe S dsP21-322-AS-2'OMe AS	CCAACUCAUUCUCCAAGUA [dT] [dT] UACUUGGAmGmAAUGAGUUGG [dT] [dT]
dsEcad-215-3'Bio S dsEcad-215-3'Bio AS	AACCGUGCAGGUCCCAUAA [dT] [dT] -Bio UUAUGGGACCUGCACGGUU [dT] [dT] -Bio
dsEcad-215-S-5'Bio-AS-MM S dsEcad-215-S-5'Bio-AS-MM AS	Bio-AACCGUGCAGGUCCCAUAU [dT] [dT] UUAUGGGACCUGCACGGUU [dT] [dT]
<b>RT-PCR Primers</b>	<b>Sequence (5' - 3')</b>
E-cadherin S E-cadherin AS	CCTGGGACTCCACCTACAGA GGATGACACAGCGTGAGAGA
p21 S p21 AS	GCCCAGTGGACAGCGAGCAG GCCGGCGTTTGGAGTGGTAGA
MOF S MOF AS	ATCCACATCGGGA ACTACGA TCTTTGCCATCAACTTCGTG

E2F1 S	CATCTATGACATCACCAACGTC
E2F1 AS	GCTTTGATCACCATAACCATCT
Ago1 S	GCGAATTGGGAAGAGTGGTA
Ago1 AS	GCAGGTGCTGGGATAGAGAC
Ago2 S	CGCGTCCGAAGGCTGCTCTA
Ago2 AS	TGGCTGTGCCTTGTA AACGCT
Ago3 S	ATCCCAGCTGGAACAACAGT
Ago3 AS	GCGTACGTAAGTGTGGCAGA
Ago4 S	GGGTAGGGAAAAGTGGCAAT
Ago4 AS	GAGCGAGTGCACCTCACATA
GAPDH S	TCCCATCACCATCTTCCA
GAPDH AS	CATCACGCCACAGTTTCC
<b>pMIR Insert Sequences</b>	<b>Sequence (5' - 3')</b>
pOffTar S	CTAGTAGATCTTGTGTGTGTGTTATGGGACCTGCA CGGTTGAACATACACA
pOffTar AS	AGCTTGTGTATGTTCAACCGTGCAGGTCCCATAAC ACACACACAAGATCTA
pNonSpec S	CTAGTAGATCTTGTGTGTGTGGGTAGGCGTCAAGT AGATAGCGAACATACACA
pNonSpec AS	AGCTTGTGTATGTTTCGCTATCTACTTGACGCCTAC CCACACACACAAGATCTA

\*Bio: biotin, m: 2'-O-Methyl