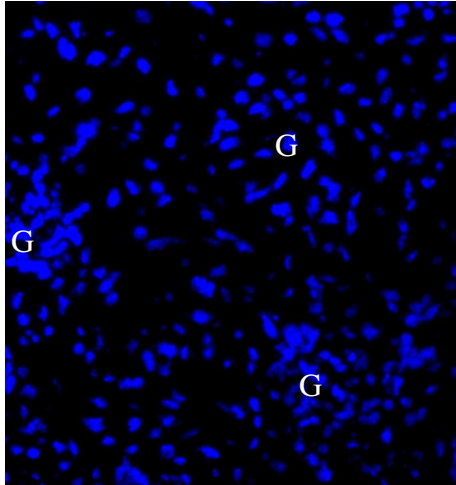


1
2
3 **Supplemental Figures**

4
5
6 **Supplemental Figure 1**

7
8 Fig. 1a



27
28
29
30
31
32
33
34
35
36
37
38
39
40
41
42
43
44
45
46
47
48
49
50
51
52
53
54
55
56
57
58
59
60

Fig. 1b

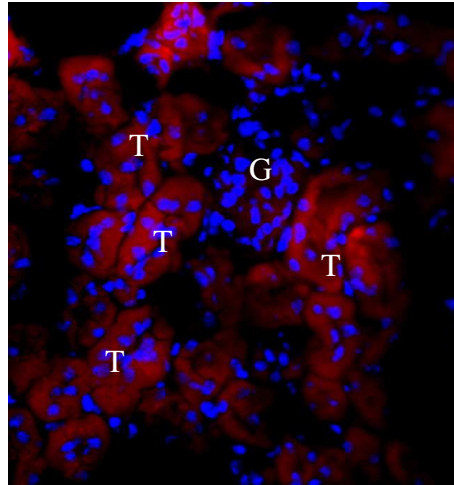


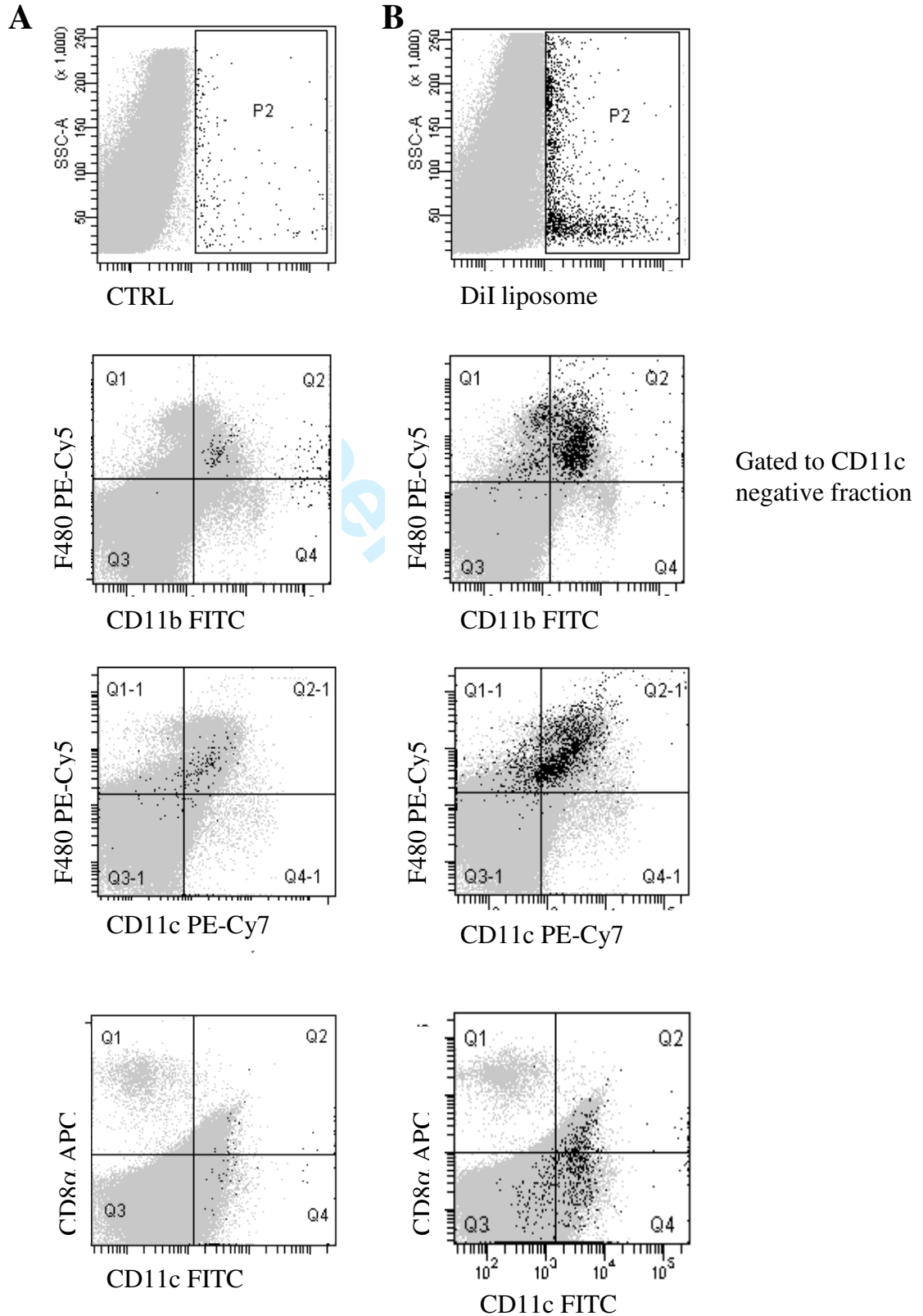
Figure legend

Figure 1 DiI-labelled liposomes are endocytosed by renal tubular epithelial cells.

Twenty-four hours after injection, kidneys of C57BL/6 mice injected intravenously with (a) PBS or (b) DiI-labelled (red fluorescent) liposomes were removed and snap frozen in OCT. Sections of frozen kidney were stained with DAPI as shown (original magnification x200). Liposomes located to renal tubular epithelial cells (Fig. 1b; G=glomerulus, T=tubule).

Supplemental Figure

Supplemental Figure 2



1
2
3
4
5
6
7
8
9
10
11
12
13
14
15
16
17
18
19
20
21
22
23
24
25
26
27
28
29
30
31
32
33
34
35
36
37
38
39
40
41
42
43
44
45
46
47
48
49
50
51
52
53
54
55
56
57
58
59
60