

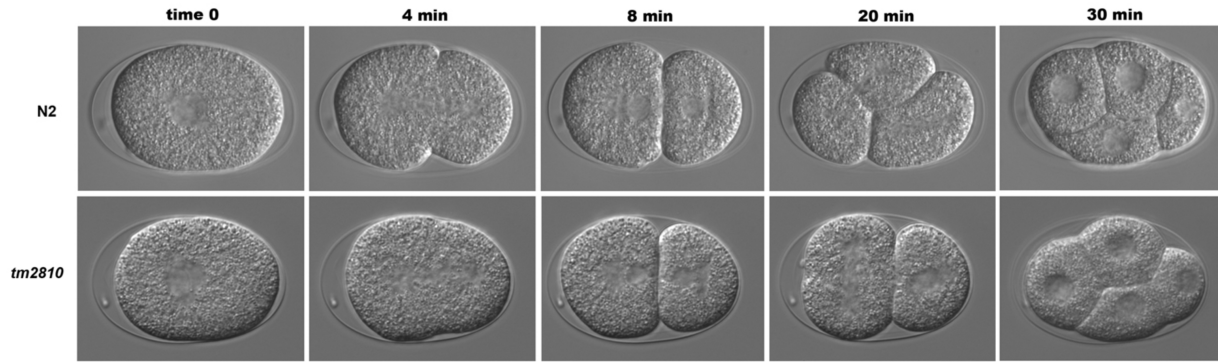
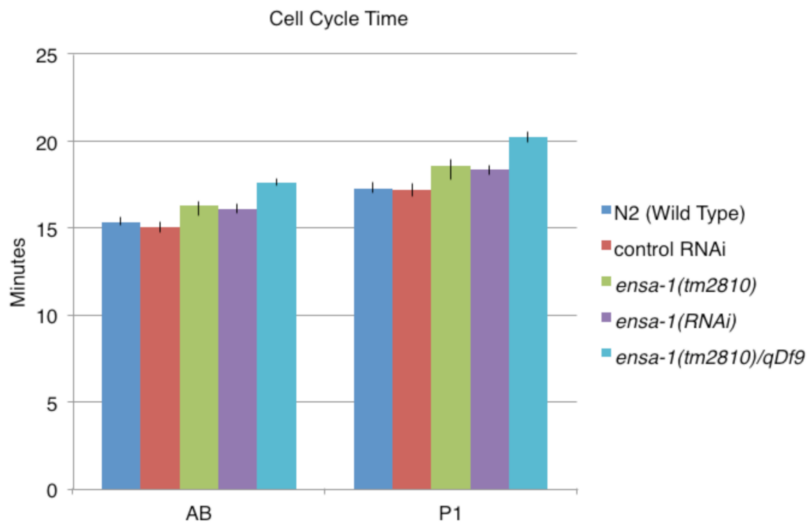
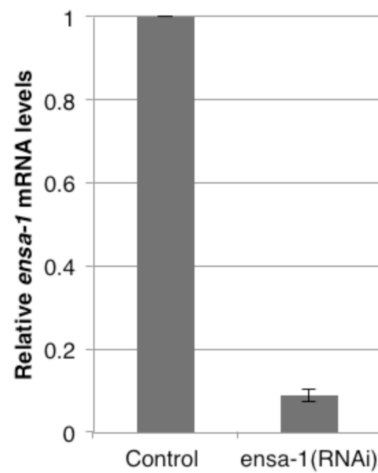
A**B****C**

Figure S6 Ablation of *ensa-1* causes minor delays during the first two embryonic cell cycles in *C. elegans*. (A) Images are taken from a time-lapse movie at 20°C. Wildtype (top) and *ensa-1(tm2810)* embryos were mounted for viewing just prior to first cleavage. Mutant embryos initiate each of the first two divisions about 1 min later than wildtype. (B) Depiction of quantitative data from Table 5 for timing of the first two cell cycles of *ensa-1(tm2810)*, *ensa-1(RNAi)*, and *ensa-1(tm2810)/qDf9* embryos. (C) Reduction of *ensa-1* mRNA by RNAi. qRT-PCR from control (L4440) and *ensa-1* RNAi-treated worms (see Materials and Methods).