

Figure S1: (A) HF diet

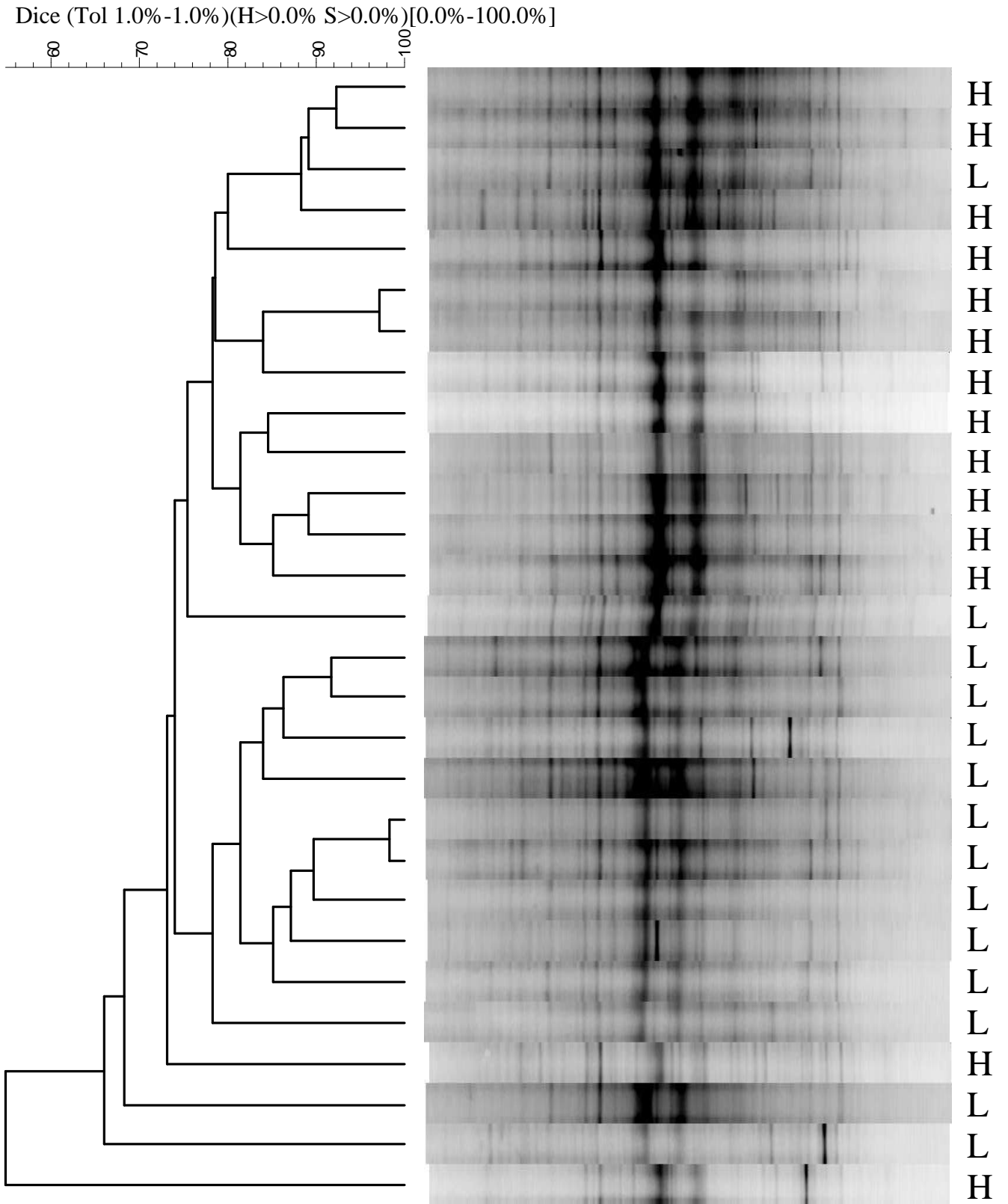
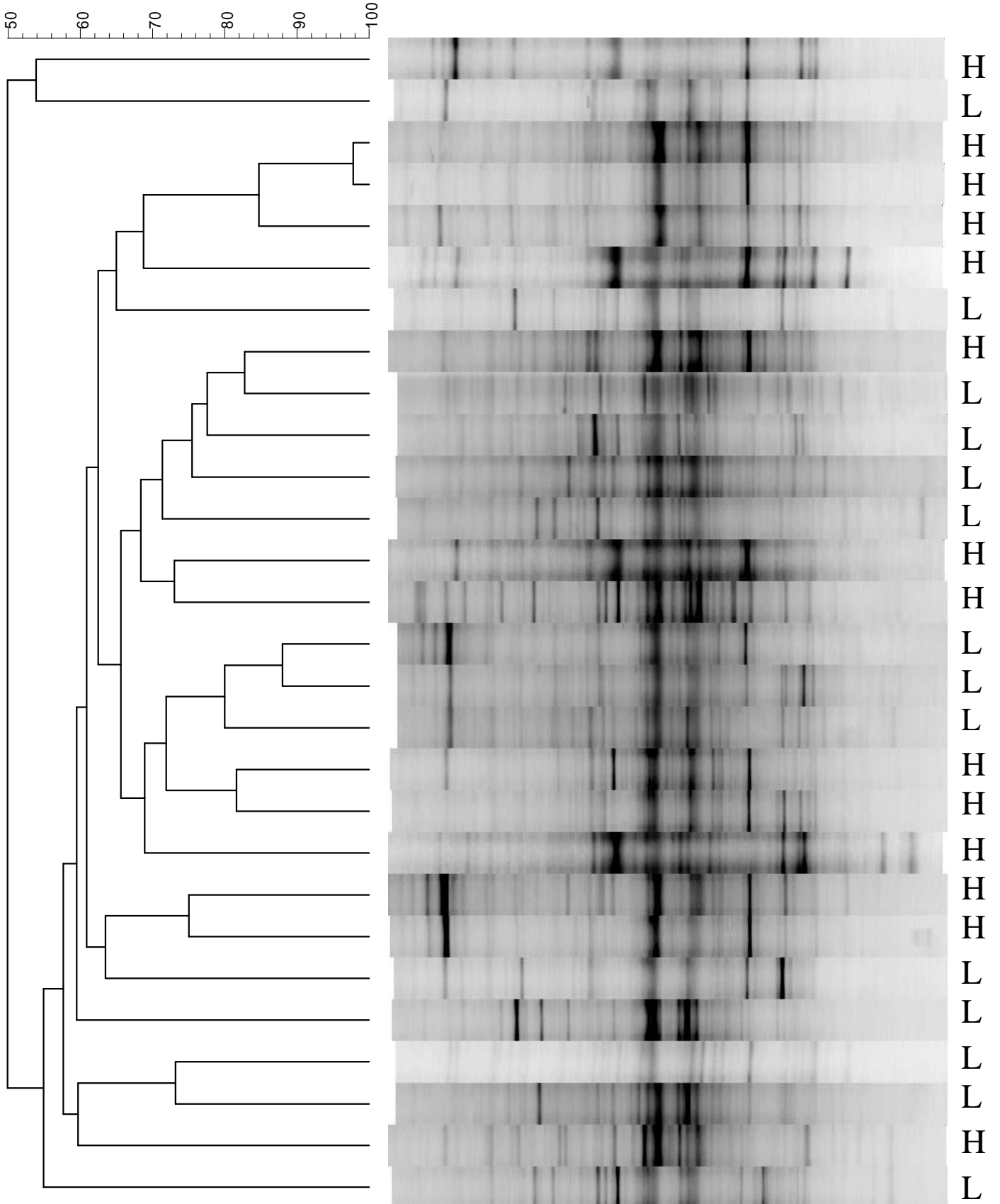


Figure S1: (B) LF diet

Dice (Tol 1.0%-1.0%)(H>0.0% S>0.0%)[0.0%-100.0%]



**Figure S1.** PCR-DGGE profiles generated from ruminal fluid DNA from 28 animals using primers HDA1-GC and HDA2 (40-60% DGGE). The RFI group is indicated beside each lane shown by the letters H and L, representing the animals with H-RFI (inefficient) and L-RFI (efficient) respectively.

Comparison of PCR-DGGE profiles was generated with the gelcompar II software package as described in the text for all 28 animals when **(A)** offered the HF grass silage diet and **(B)** offered the LF TMR diet. The indices of the cluster analysis are listed on top of each comparison. Tol (position tolerance) displayed in a setting of 1.0%; H (minimum height), S (minimum surface) set to 0% for the comparison; 0.0%-100%, covering the entire length of each lane.