

Figure S2: High and Low energy diet

Dice (Tol 1.0%-1.0%)(H>0.0% S>0.0%)[0.0%-100.0%]

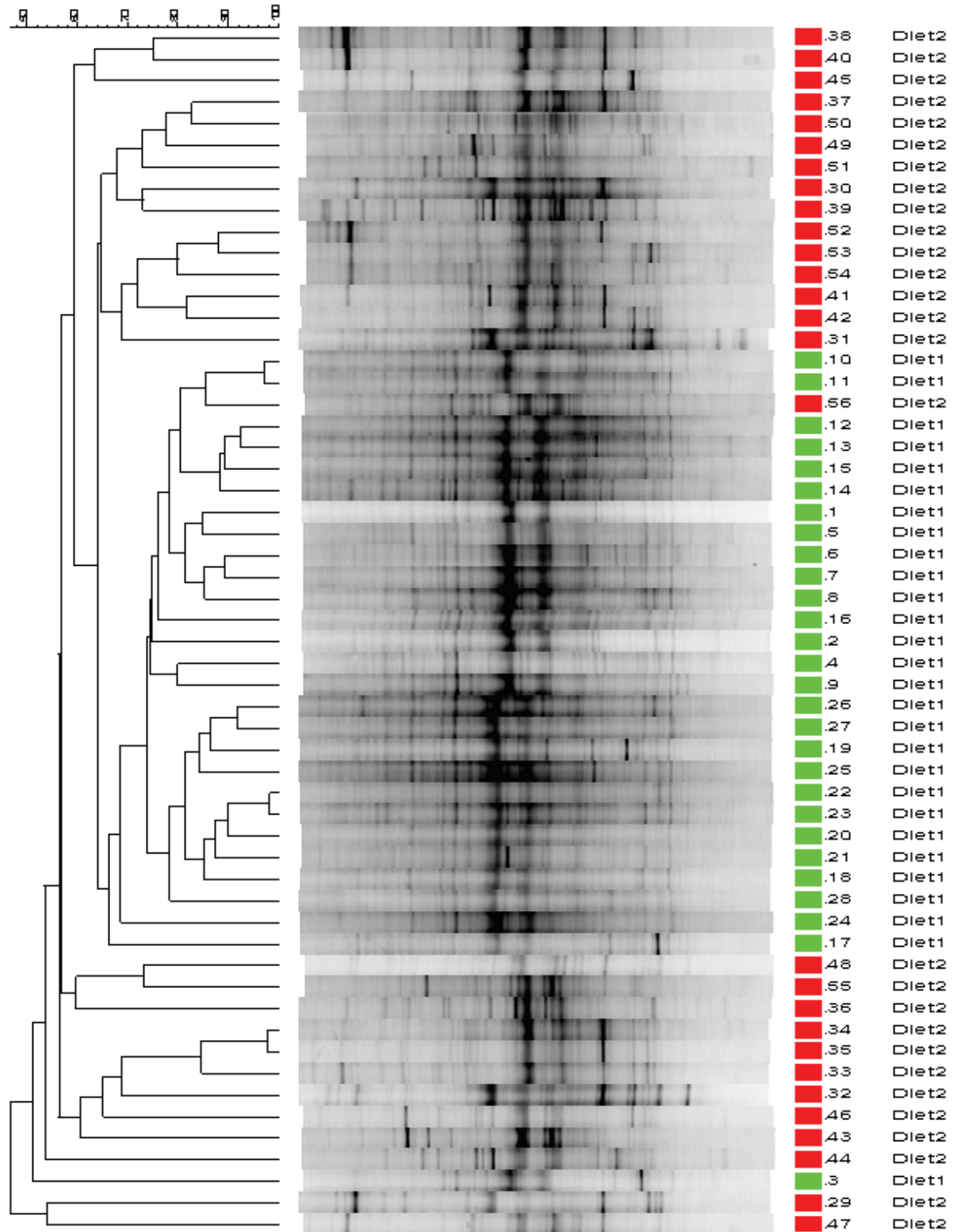


Figure S2: PCR-DGGE profile generated from ruminal fluid from 28 animals offered both low energy and high energy diets at different dietary periods using HDA1-GC and HDA2 (40-60% DGGE). The indices of the cluster analysis are listed on top of each comparison. Tol (position tolerance) displayed in a setting of 1.0%; H (minimum height), S (minimum surface) set to 0% for the comparison; 0.0%-100%, covering the entire length of each lane. The numbers on the right indicate the animals and corresponding diets (i.e. 1-14, H-RFI HF diet, 15-28 L-RFI HF diet, 29-42, H-RFI LF diet and 43-56, L-RFI LF diet respectively). Diet 1, corresponds to the high forage low energy diet and diet 2 corresponds to the low forage high energy diet.