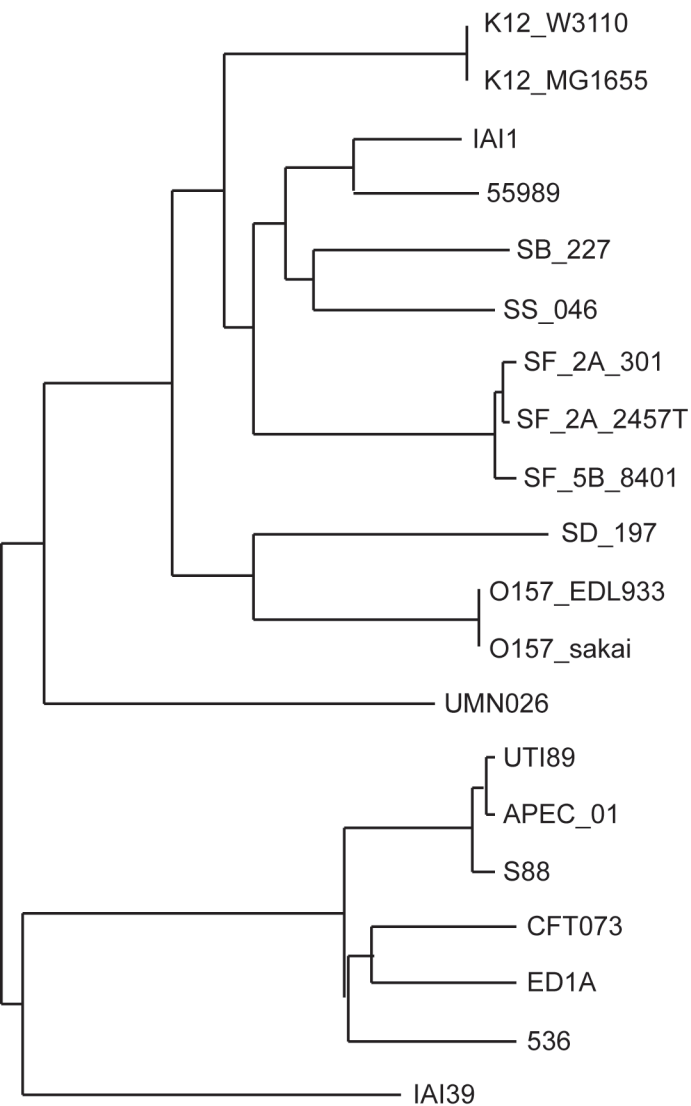


Two phylogenetic trees inferred using two different alignments. The Touchon tree was traced from the tree published by Touchon *et al.* (PLoS Genet 5:e1000344, 2009). The genomes from the Touchon tree were aligned with Mugsy and the WGA phylogeny is also shown. The two trees have the same topology, which suggests that the topology is robust.

## Touchon



## Mugsy WGA

