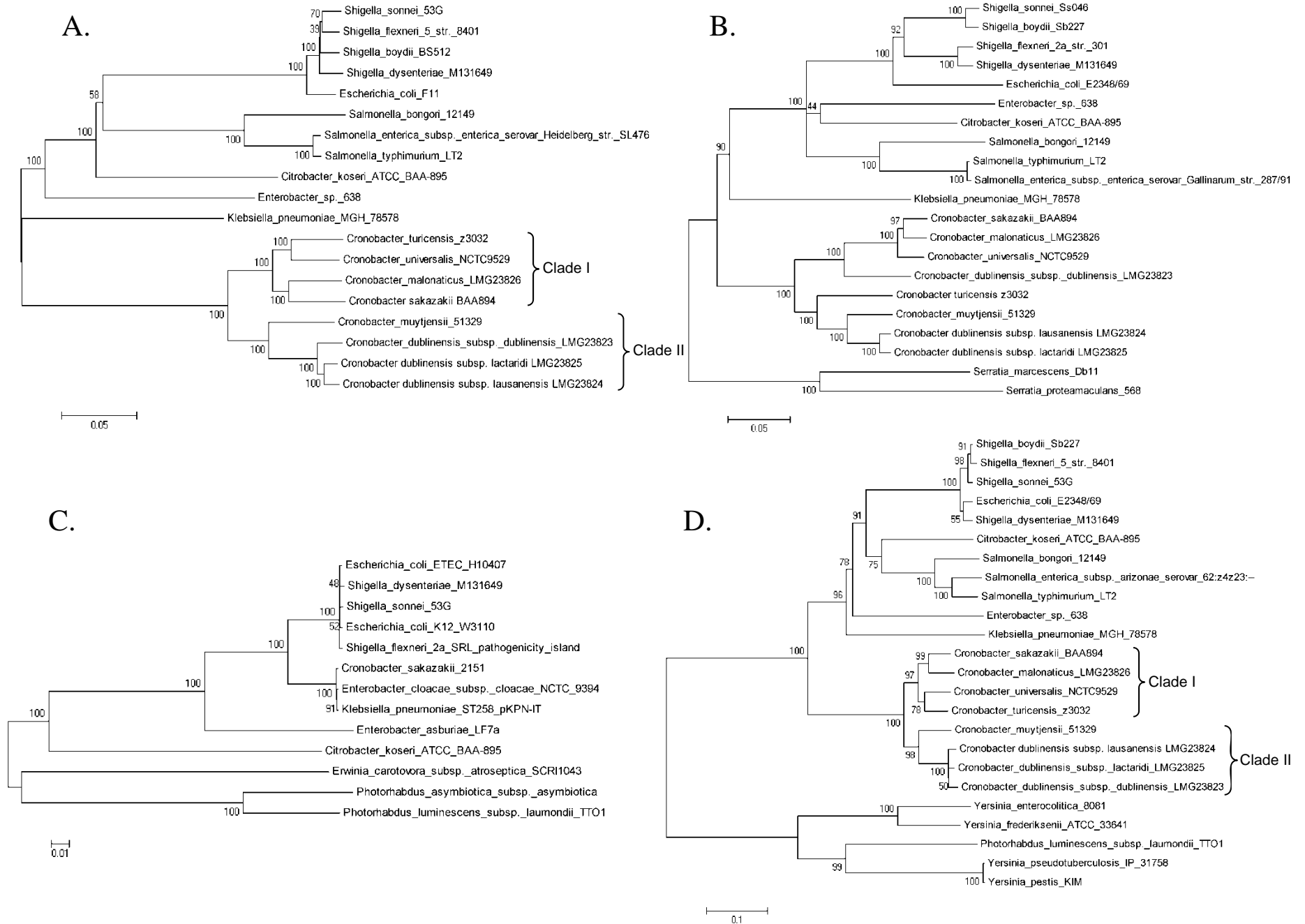
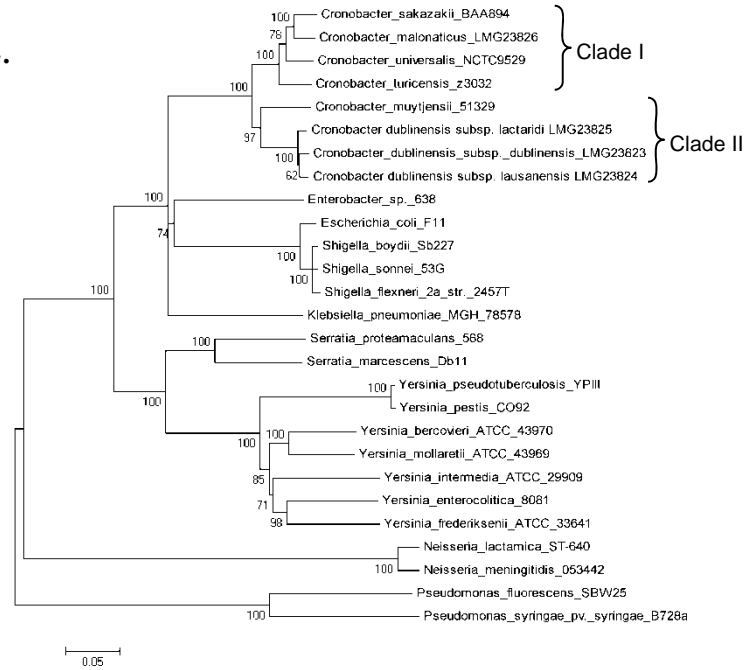
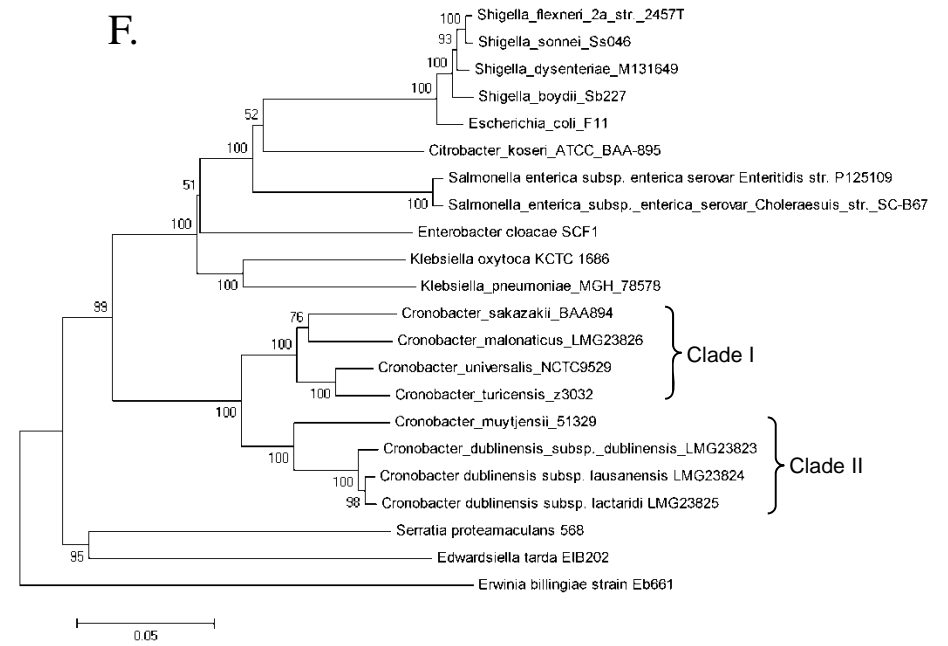
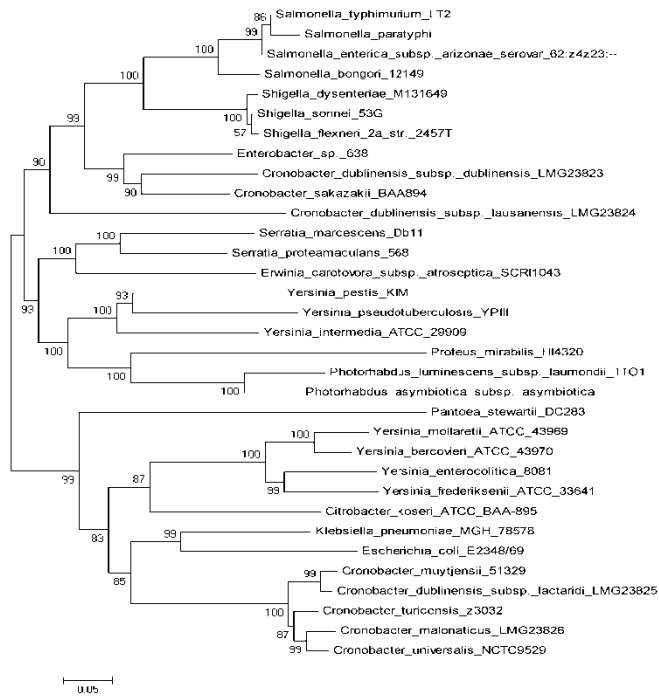


**Supplementary Figure S1.** Evolutionary history of iron acquisition system genes, A, small enterobactin gene cluster in *Cronobacter* spp., *entD/fepA/fes/ybdZ/entF*; B., the ferric iron siderophore transporter, *fhuACDB*; C., the ferric iron dicitrate transporter, *fecIRABCDE*; D., the ferric iron reductase, *fhuF*; the ferrous iron transporters, E., *efeUOB*; and F., *feoABC*; the TonB receptor encoding genes, G., *btuB*; H., *fcr*; I., *fhuE*; J., *pfeA*; K., *yncD*; and L., the heme-iron extractor encoding gene, *yfeX*.



**E.****F.****G.****H.**