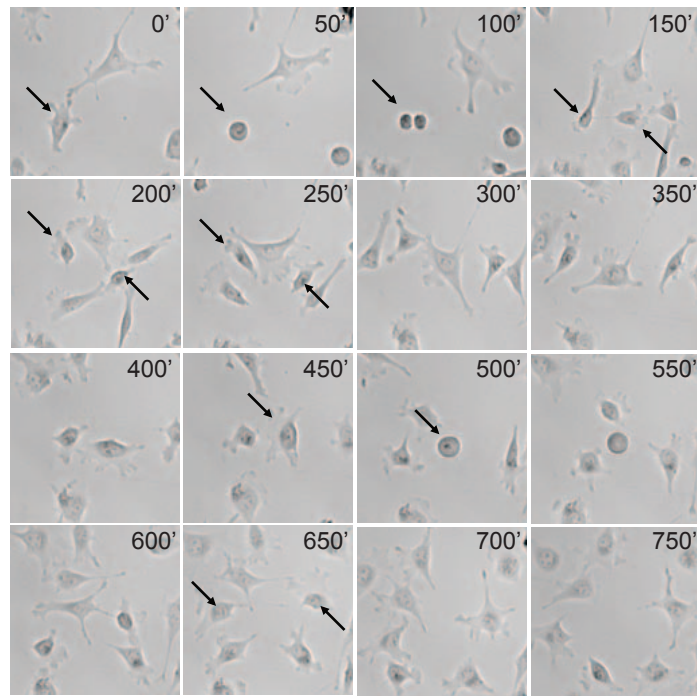


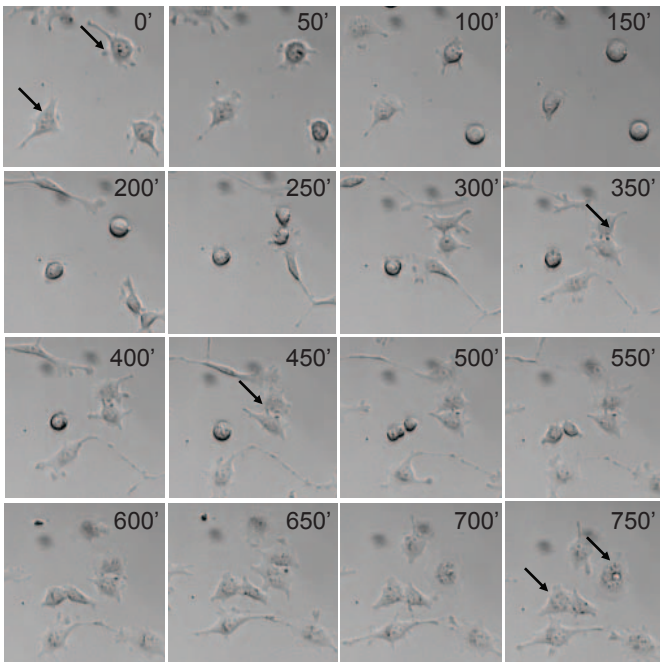
A

HeLa control shRNA



B

HeLa NAC1 shRNA2



C

HeLa PFN1 shRNA1

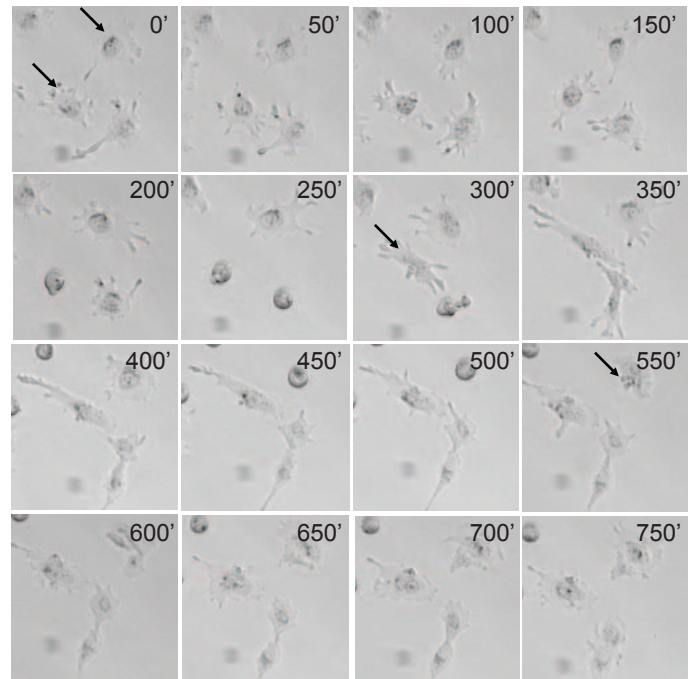


Figure S3. HeLa cells treated with **A.** control **B.** NAC1 and **C.** profilin-1 lentiviral shRNA particles were captured using time-lapse microscopy to observe the process of cancer cell division. Each frame has an interval of 50 minutes in real time. **A.** Control shRNA treated cells separated into two distinct daughter cells after cytokinesis. Arrows denote cells of interest undergoing cell division and the successful formation of daughter cells by 150 minutes. **B, C.** However during the process of cytokinesis in the NAC1 or profilin-1-silenced cells, there was incomplete abscission and the formation of multi-nucleated cells at the end of 750 minutes. Arrows denote cells of interest attempting division but failed.