

1 **Legends for supplementary figures**

2 **Fig. S1.** HSV-1 infection induces the outgrowth of filopodia and lamellipodia during
3 the early infection. (A) SK-N-SH cells were infected with HSV-1 (MOI=30) for 2 and
4 4 h respectively, fixed, permeabilized and stained with TRITC-Phalloidin and DAPI.
5 Images were then recorded by LSM. (B) Cells were infected with HSV-1 (MOI=5)
6 for 1 h and treated for LSM detection.

7 **Fig. S2.** Cell viabilities at different time points post infection. SK-N-SH cells were
8 infected with HSV-1 (MOI=5) for 2, 6, 12 and 20 h, respectively. Cell viabilities were
9 then determined by MTT assay. Each value represents mean \pm s.d. of 3 separate
10 experiments. (*: $p < 0.05$; **: $p < 0.01$, compared with the samples at 0 h p.i.).

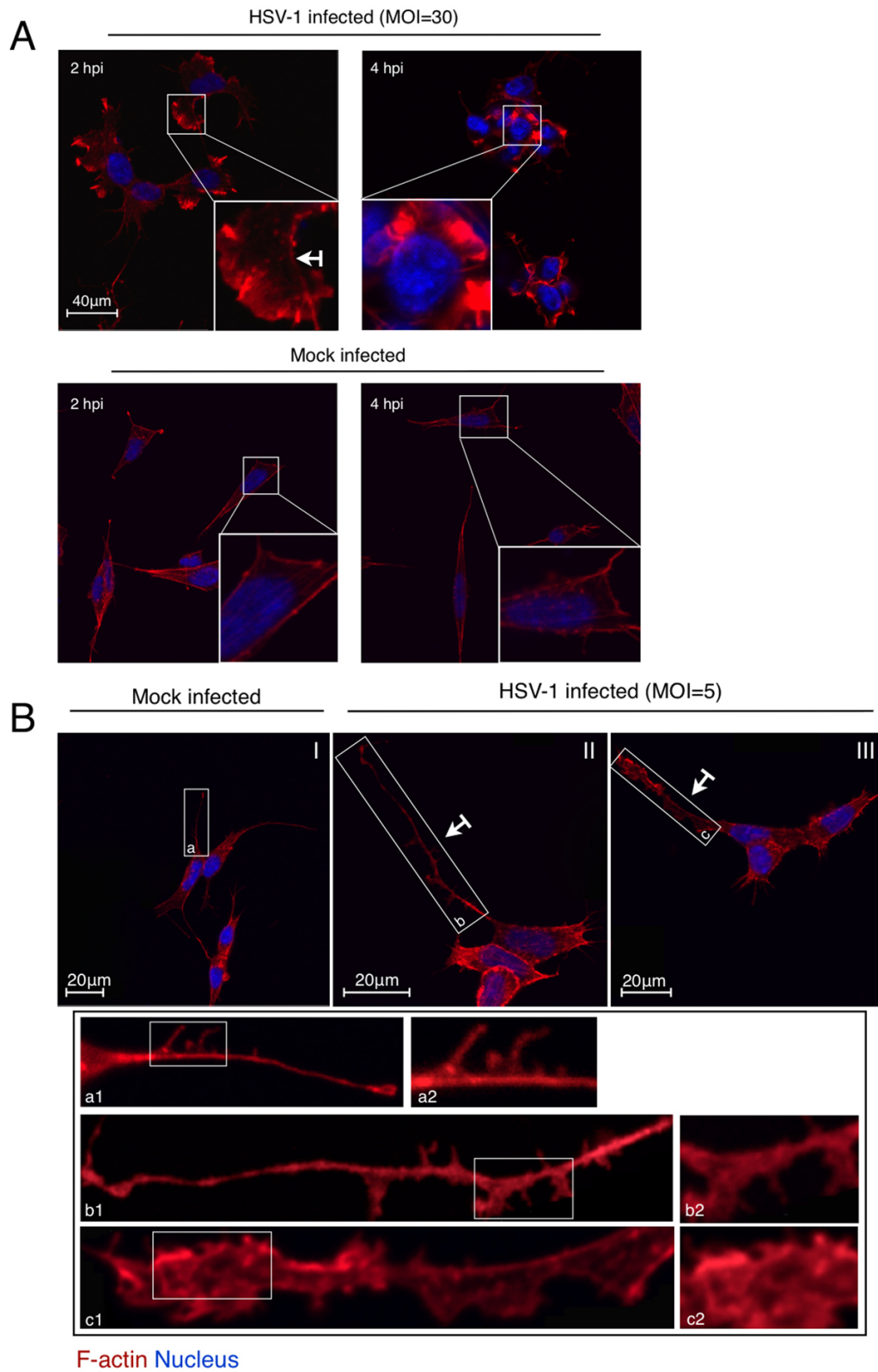
11 **Fig. S3.** Cytotoxicity of CytoD, Lat A and Jas on SK-N-SH cells. SK-N-SH cells
12 grown in glass bottom dish were treated with different inhibitors at indicated
13 concentrations for 5 h. One hour prior to fixation, cells were labeled with 10 $\mu\text{g/mL}$
14 PI/PBS and then fixed with 4% paraformaldehyde/PBS for 15 min, and followed by
15 counterstaining with 1 mg/mL DAPI/PBS. Images were then acquired by LSM.

16 **Fig. S4.** Effects of CytoD, Lat A and Jas on F-actin and microtubule networks of
17 HSV-1 infected SK-N-SH cells. Cells were pretreated with CytoD (0.5 $\mu\text{g/mL}$), Lat A
18 (0.5 μM) or Jas (0.5 μM) for 1 h and then infected with HSV-1 (MOI=30) for 4 h in
19 the presence of inhibitors. The cells were then fixed and stained for LSM observation.

20 **Fig. S5.** Effects of CytoD, Lat A and Jas on F-actin and microtubule networks of
21 normal SK-N-SH cells. Cells were treated with CytoD (0.5 $\mu\text{g/mL}$), Lat A (0.5 μM)
22 or Jas (0.5 μM) for 5 h and then fixed and stained for LSM observation.

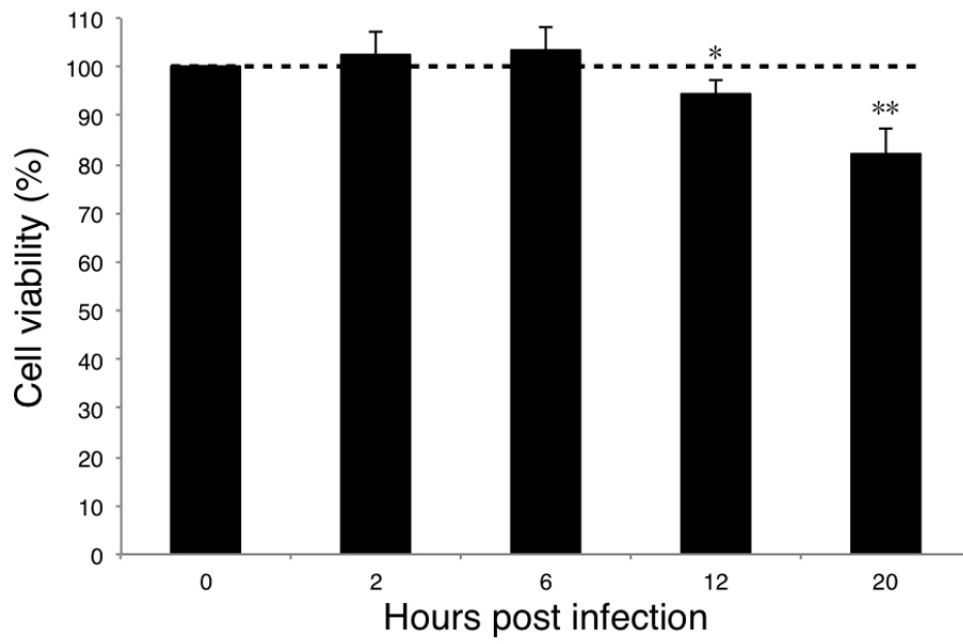
23
24
25
26

1 Fig. S1



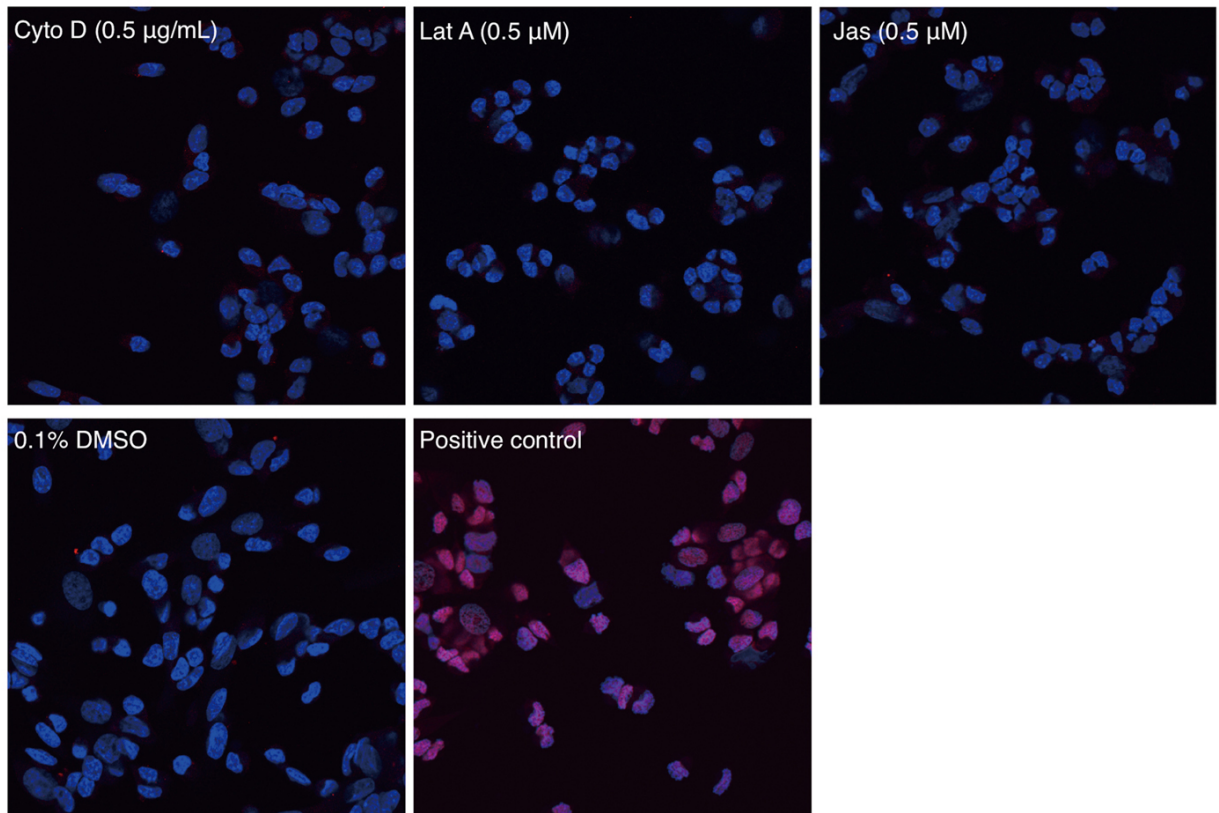
2
3
4
5

1 Fig. S2



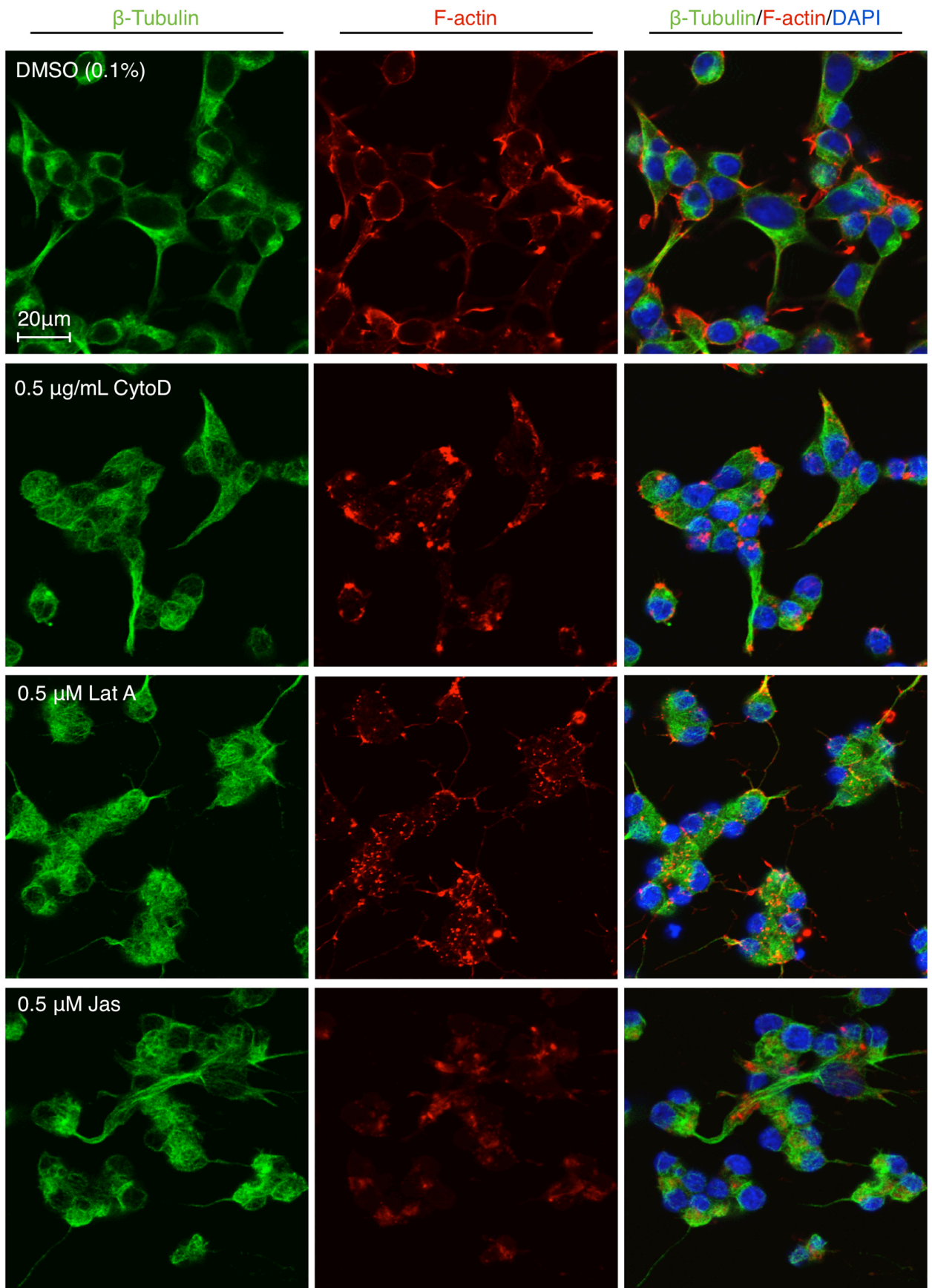
2
3
4
5
6
7
8
9
10
11
12
13
14
15
16
17
18
19
20
21

1 Fig. S3



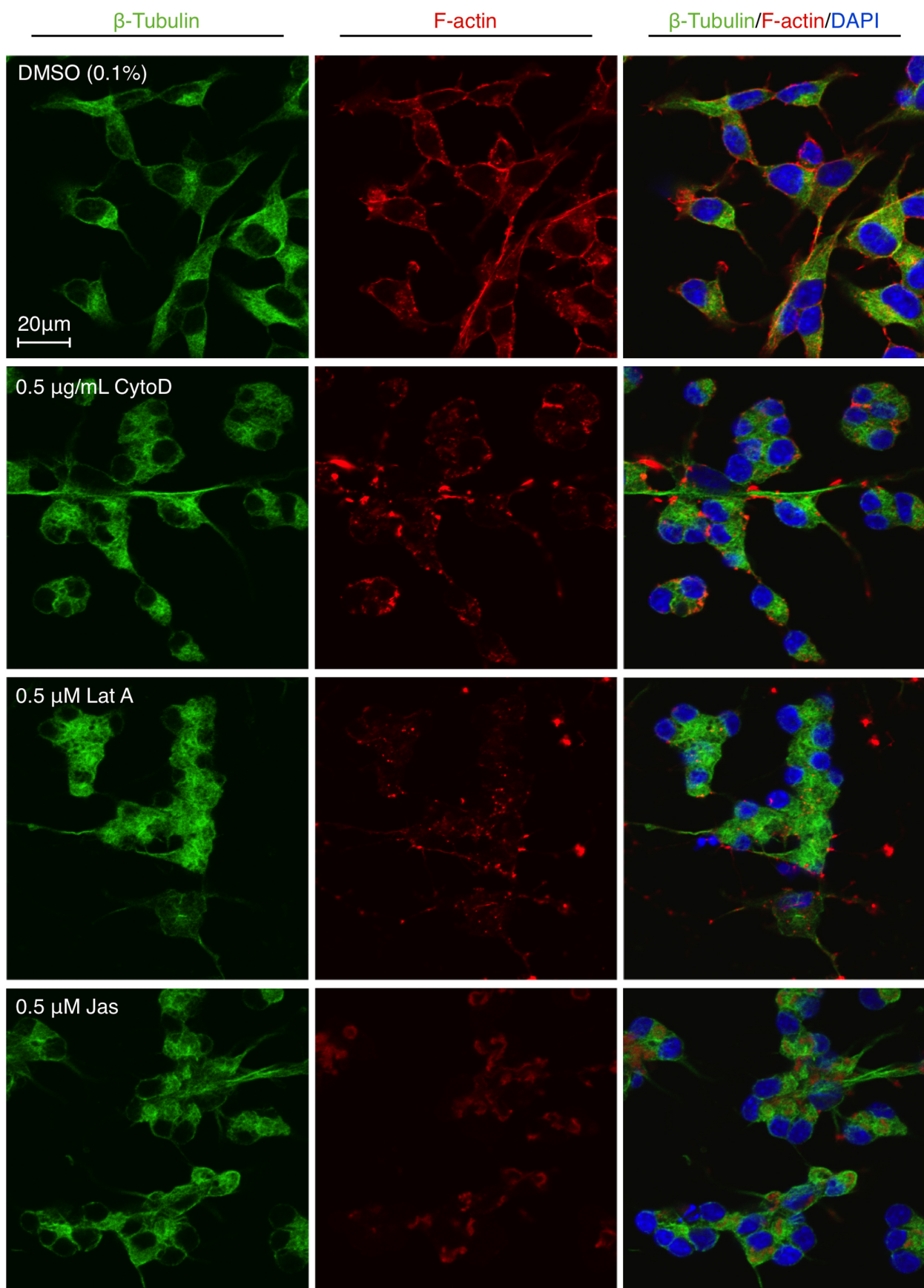
2
3
4
5
6
7
8
9
10
11
12
13
14
15
16
17
18
19

1 Fig. S4



2

1 Fig. S5



2