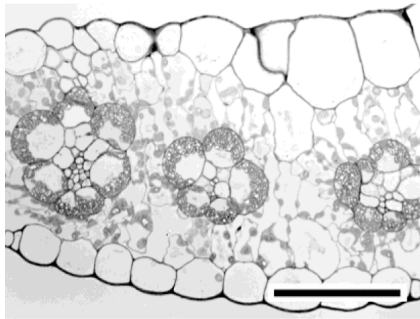
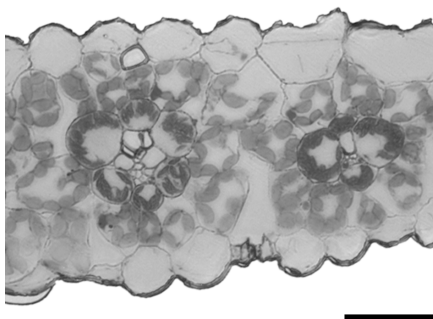
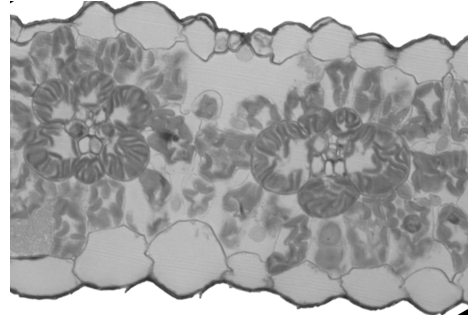


A**B****C****B73****Mo17****Seneca60**Intervein distance (μm) 134 ± 12 128 ± 5 126 ± 5

Intervening M cells

 2.1 ± 0.1 1.9 ± 0.1 1.9 ± 0.1 PBS Cell Area (μm^2) 702 ± 55 589 ± 28 787 ± 134