

Figure S2.

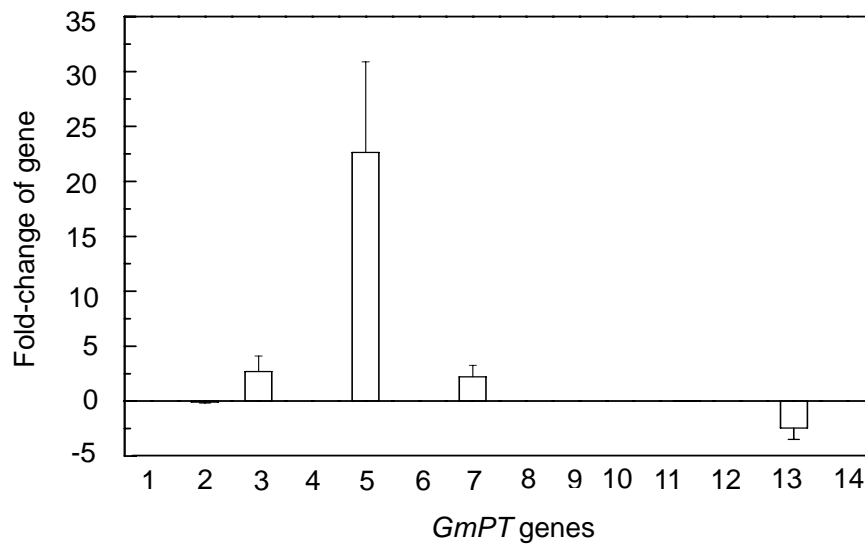


Figure S2. The fold-changes of the expressions of *GmPT* genes between low P and high P supplies in soybean nodules. Total RNA was extracted from the soybean nodules at 30 days after inoculation with rhizobial strain BXYD3 in nutrient solution with 5 μ M P (low P) or 250 μ M P (high P) supply under low N conditions. The fold-change was calculated by the relative expression value of the corresponding *GmPT* at low P divided by that at high P in nodules. The negative value represented that the expression value of the corresponding *GmPT* was higher at high P than that at low P. There were four biological replicates for each treatment and bars showed mean and standard errors.