

Fig. S1

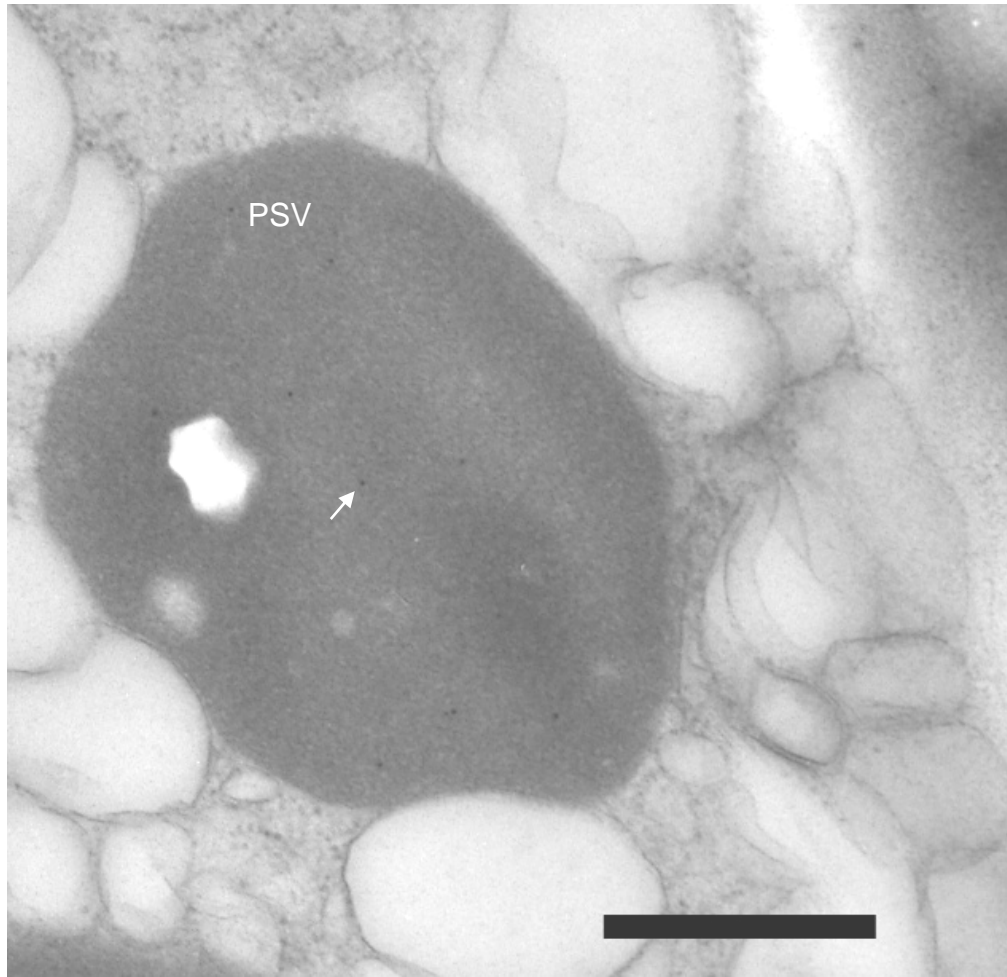


Fig. S2

Supplementary Figure Legends

Fig. S1. Comparison of uptake of imiglucerase and *cgl*-GCCase by RAW mouse macrophages. **A.** Equivalent units of imiglucerase (white bar) or *cgl*-GCCase (black bar) were added to cells. Shown are levels of GCCase activity (nmoles/h MU released from MUGP substrate) present in the buffers (containing or lacking 20 mg/ml yeast mannan) added to the macrophage cell line. **B.** GCCase activity (nmoles/h MU released from MUGP substrate) in lysates from cells treated with imiglucerase (white bar), *cgl*-GCCase (black bar) or mock (gray bars) in buffer containing or lacking mannan. GCCase activity was normalized to intracellular β -*N*-acetylhexosaminidase activity. (* $p < 0.05$).

Fig. S2. Immunogold EM localization of GCCase in transgenic *cgl* seeds. The arrow indicates a gold particle. PSV, protein storage vacuole. Bar = 500 nm.