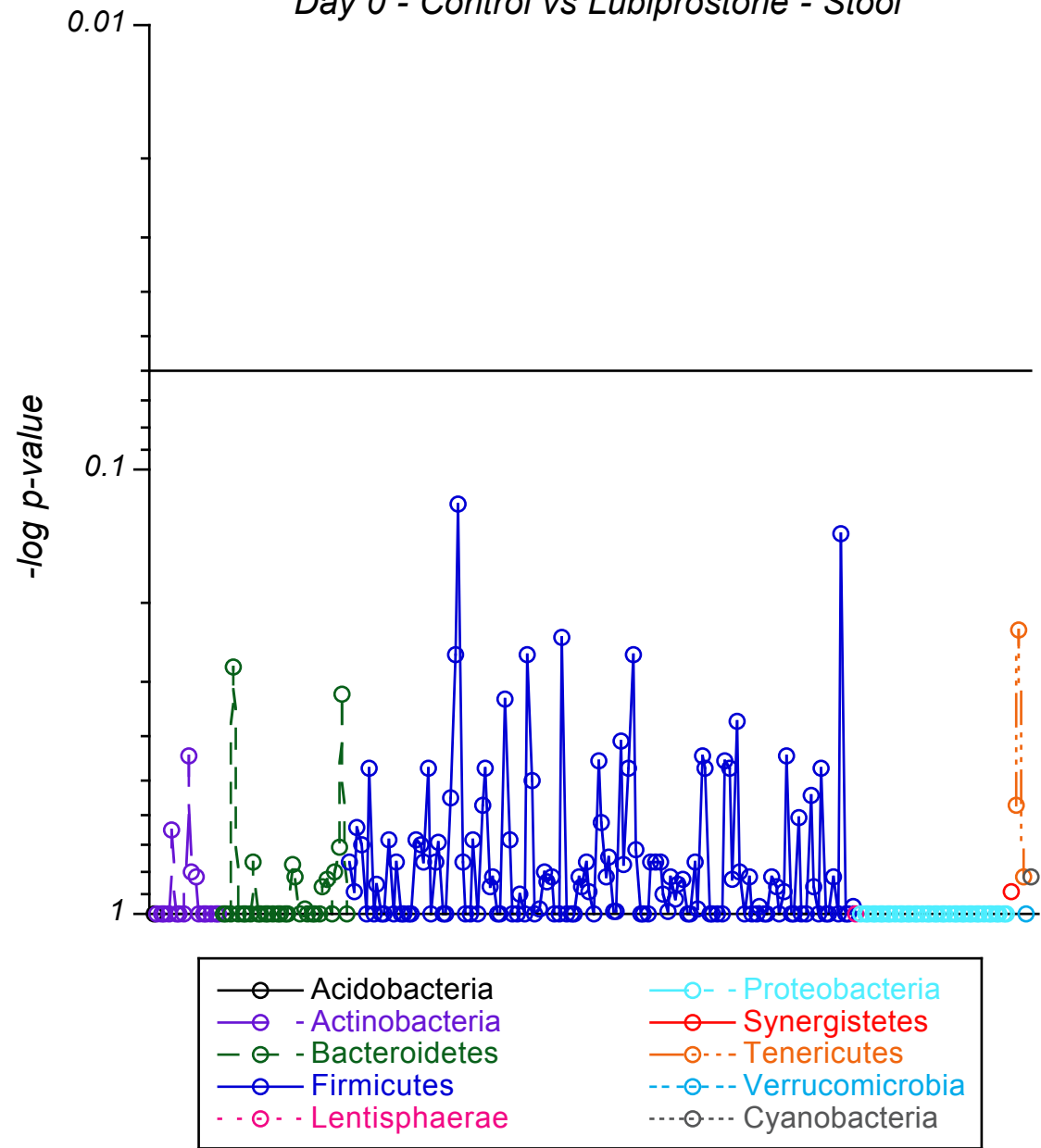


Supplemental Material to:

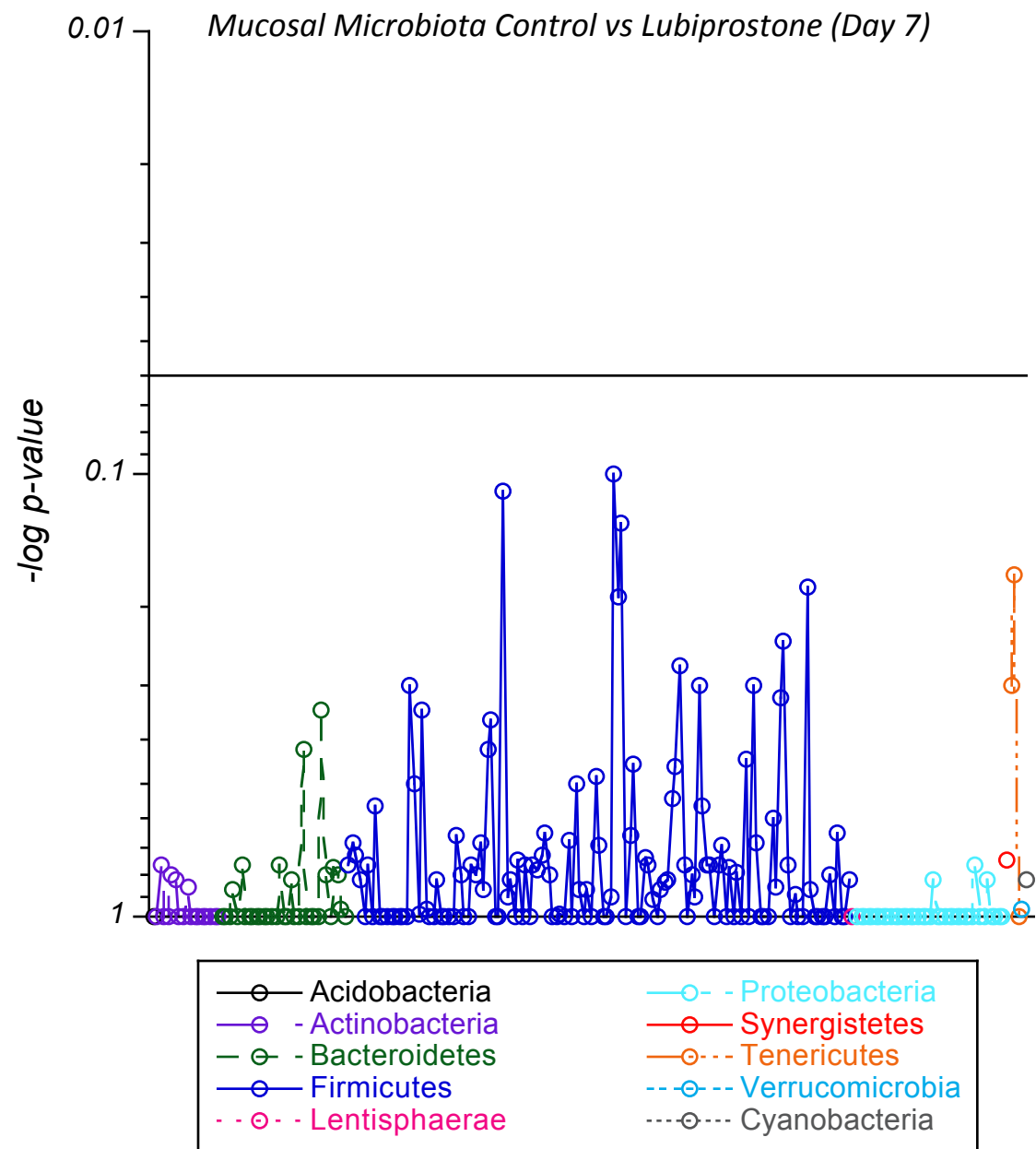
Simon Keely, Caleb Kelly, Thomas Weissmueller, Adrienne Burgess, Brandie Wagner, J Harris, et al. Activated fluid transport regulates bacterial-epithelial interaction and significantly shifts the murine colonic microbiome. *Gut Microbes* 2012; 3(3); <http://www.landesbioscience.com/journals/gutmicrobes/article/20529/>

Supp Figure 1

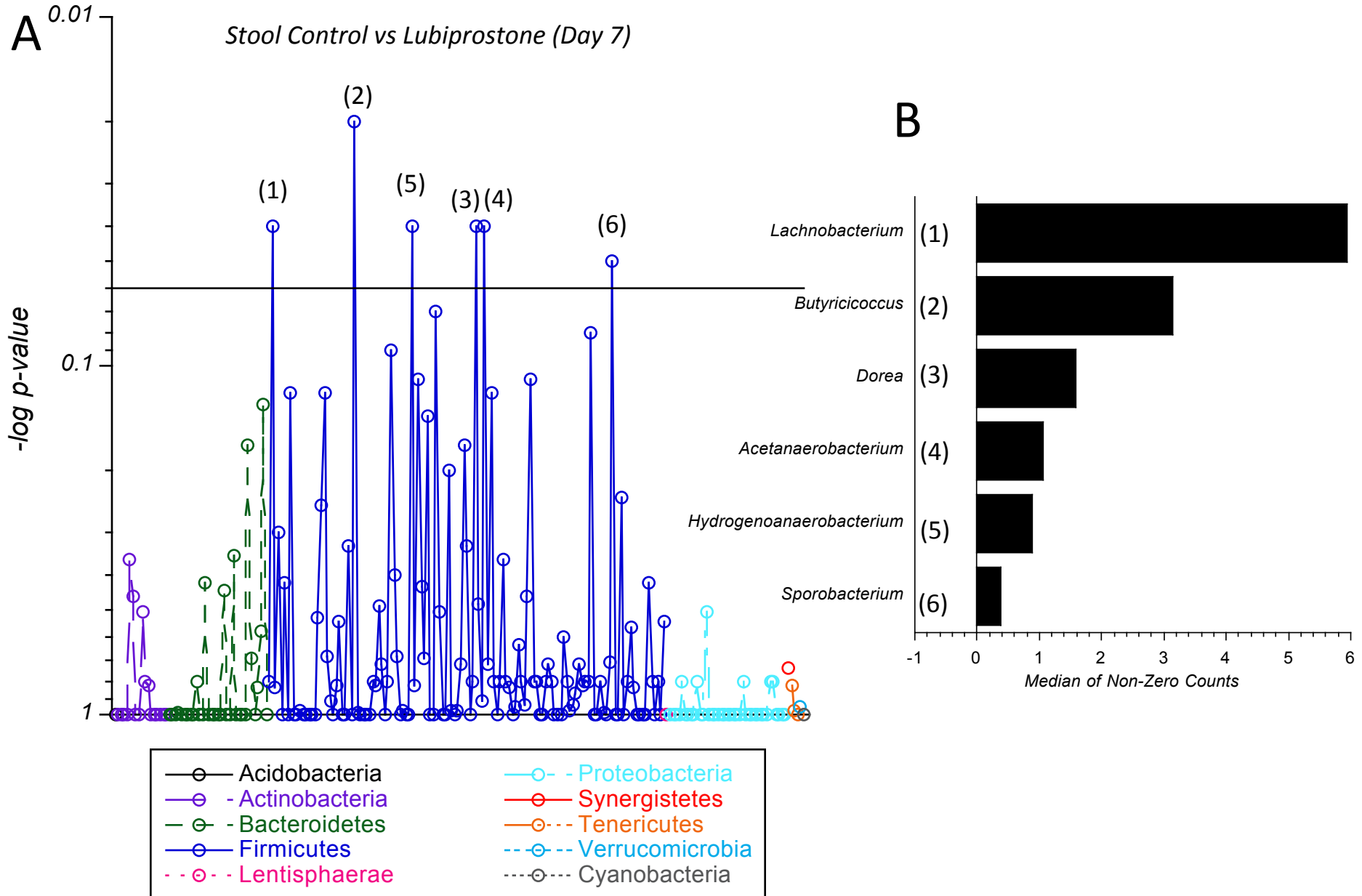
Day 0 - Control vs Lubiprostone - Stool



Supp Figure 2



Supp Figure 3



Mucosa vs Stool – Control (Day 7)

