

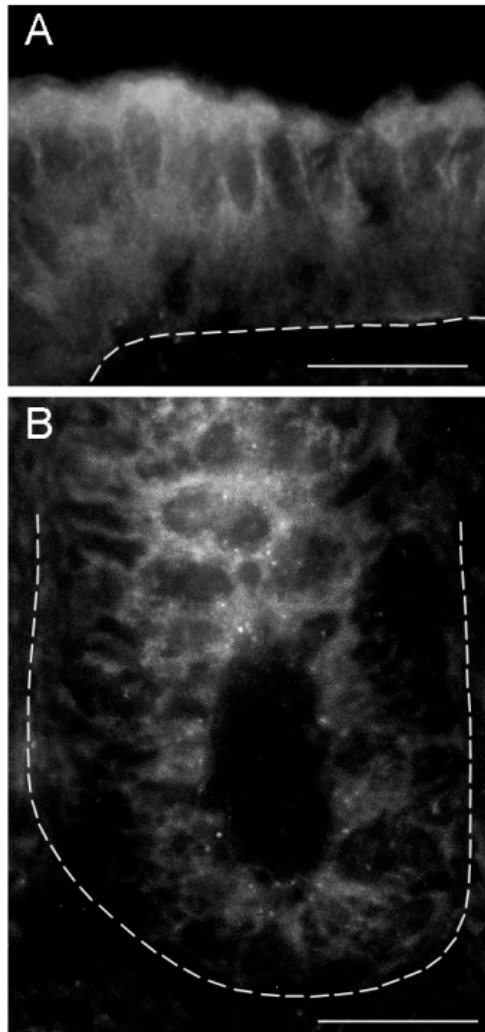
**Supplemental Material to:**

**Jean-Francois Groulx, Taoufik Khalfaoui, Yannick D. Benoit,  
Gérald Bernatchez, Julie C. Carrier, Nuria Basora  
and Jean-François Beaulieu**

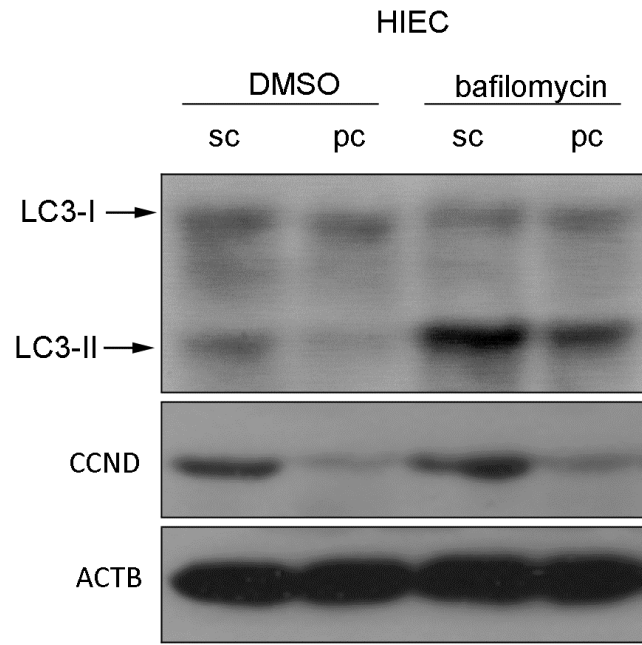
**Autophagy is active in normal colon mucosa**

**Autophagy 2012; 8(6); [http://dx.doi.org/10.4161/  
auto.19738](http://dx.doi.org/10.4161/auto.19738)**

**[www.landesbioscience.com/journals/autophagy/article/19738](http://www.landesbioscience.com/journals/autophagy/article/19738)**



**Figure S1. Representative immunofluorescence images for LC3 staining in normal human colon.** (A) Surface epithelium shows diffuse staining of LC3. (B) Crypt epithelium shows diffuse staining and dot staining. Epithelial cell organization is outlined with a dotted line. (n=3). Scale bars: A-B=25 $\mu$ m.



**Figure S2. Representative western blots for LC3, CCND/cyclin D and ACTB in sub-confluent (sc) and post-confluence (pc) HIEC cells. Cells were treated with DMSO or bafilomycin for 4h. (n=3)**