

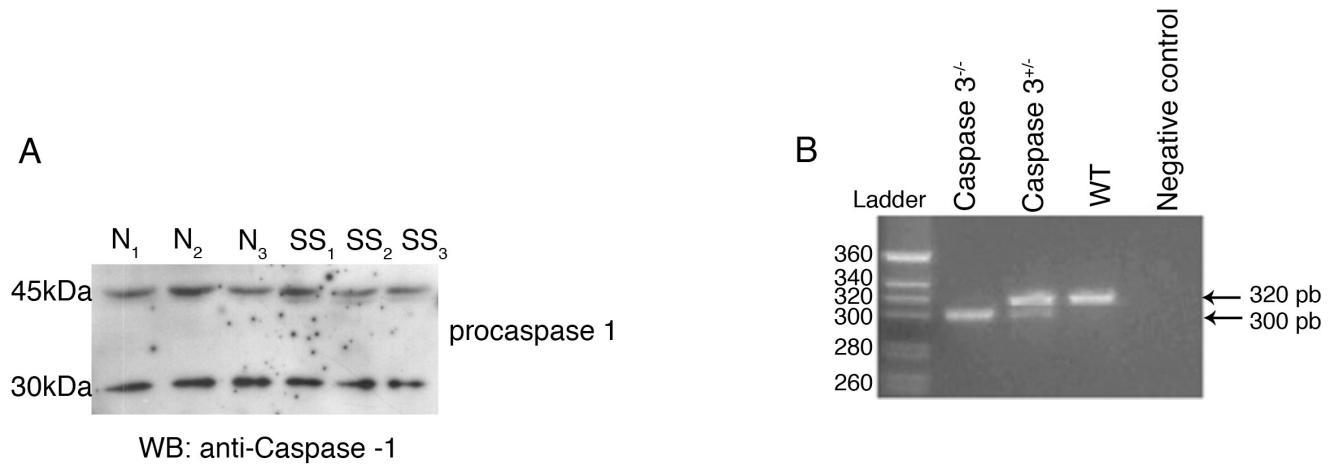
**Supplemental Material to:**

**Isabelle Sirois, Jessika Groleau, Nicolas Pallet, Nathalie Brassard, Katia Hamelin, Irène Londono, Alexey Pshezhetsky, Moise Bendayan and Marie-Josée Hébert**  
**Caspase activation regulates the extracellular export of autophagic vacuoles**

**Autophagy 2012; 8(6); <http://dx.doi.org/10.4161/auto.19768>**

**[www.landesbioscience.com/journals/autophagy/article/19768](http://www.landesbioscience.com/journals/autophagy/article/19768)**

### Supplementary Material Figure S1



Supplementary Figure S1. (A) Representative western blots of pro-caspase-1 in human endothelial cells exposed to normal medium (N) or serum starved for 4 hours (SS) (n=3 different experiments). (B) Genotyping of Caspase 3<sup>-/-</sup>, Caspase 3<sup>+/-</sup> and wild type (WT) mice was performed by PCR.

### Supplementary Table S1

Gene name	Accession #	Peptide sequence	% protein coverage	spi (%)	score	Parent charge	Parent M/Z	Matched parent mass	Delta parent mass	Spectra intensity
MAP1LC3B	Q49A36	(R)HLSTQQYRGTLFANQPK(M)	5.7	79.4	9.8	3.0	663.8	1989.031	0.354	1.2E+07
ATG4D	Q86TL0	(R)DWRWVEGTGLASSEMPGPASPSR(C)	8.0	87.0	8.1	3.0	824.81	2473.157	-0.743	1.2E+07
ATG16L1	Q175G0	(K)QHSSSINAVAWAPSGLHVVSVDK(G)	4.0	82.3	6.1	3.0	796.62	2389.226	-1.382	1.4E+07
VPS4B/SKD1	O75351	(K)EGQPSPADEK(G)	12.1	54.3	6.4	2.0	528.35	1057.48	-1.788	1.7E+07
VPS16	A1A4H0	(K)DVSEDEVAR(A)	1.3	90.4	7.9	2.0	503.42	1005.449	0.383	1.7E+08
Lamp2	P13473	(K)VTYNGSSCGDDKNGAK(I)	3.4	83.4	9.0	2.0	837.13	1672.724	0.528	2.8E+07
RAB7A	P51149	(R)DDVLAKIIPMEQSYPMVVLGNK(I)	10.6	91.0	6.3	3.0	820.06	2460.288	-2.124	1.3E+07

Supplementary Table S1. Primary data of autophagy-related proteins presented in Table 1. Gene names and primary accession numbers were obtained from <http://ca.expasy.org/sprot/>. MS/MS parameters were generated from Spectrum Mill Software (Agilent Technologies).