

Supplementary Material to:

Tumor Antigen Specific iTreg Accumulate in the Tumor Microenvironment and Suppress Therapeutic Vaccination

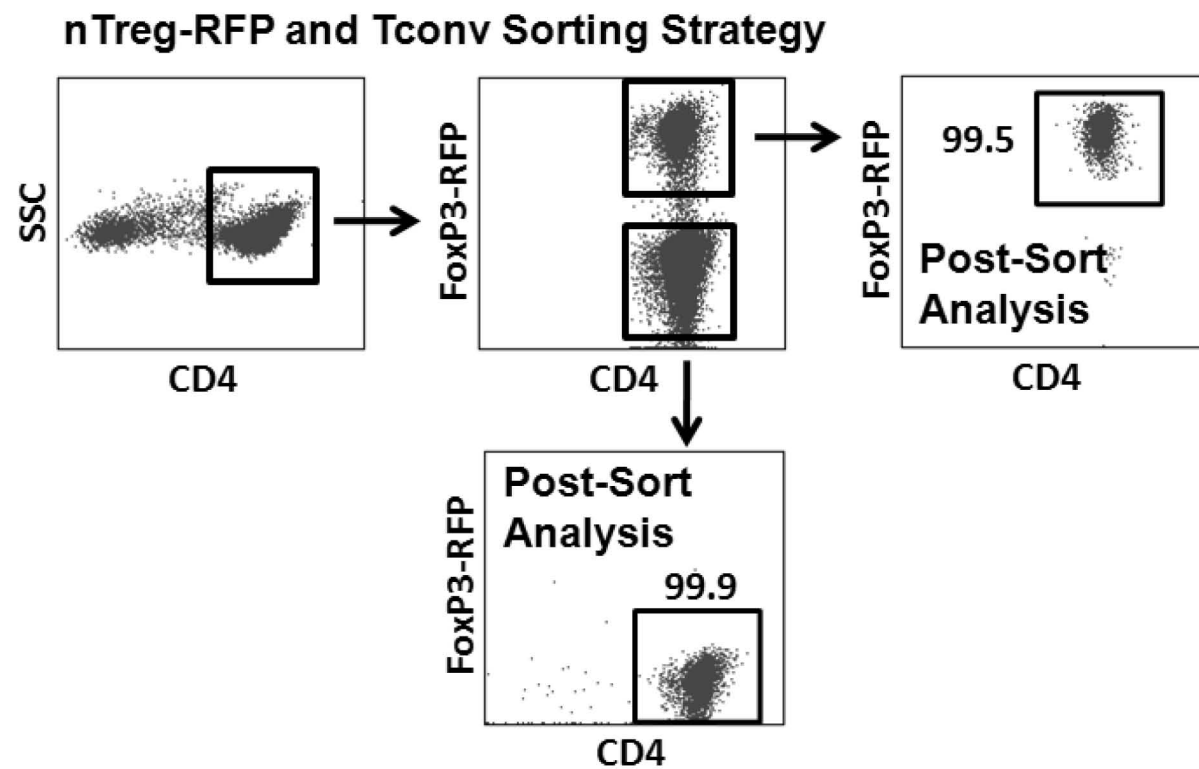
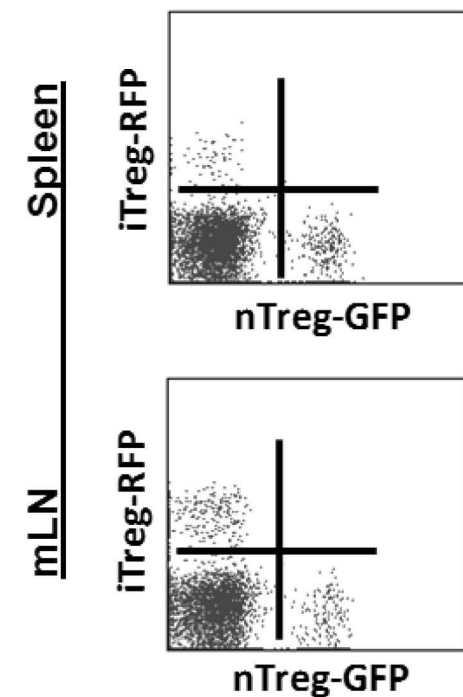
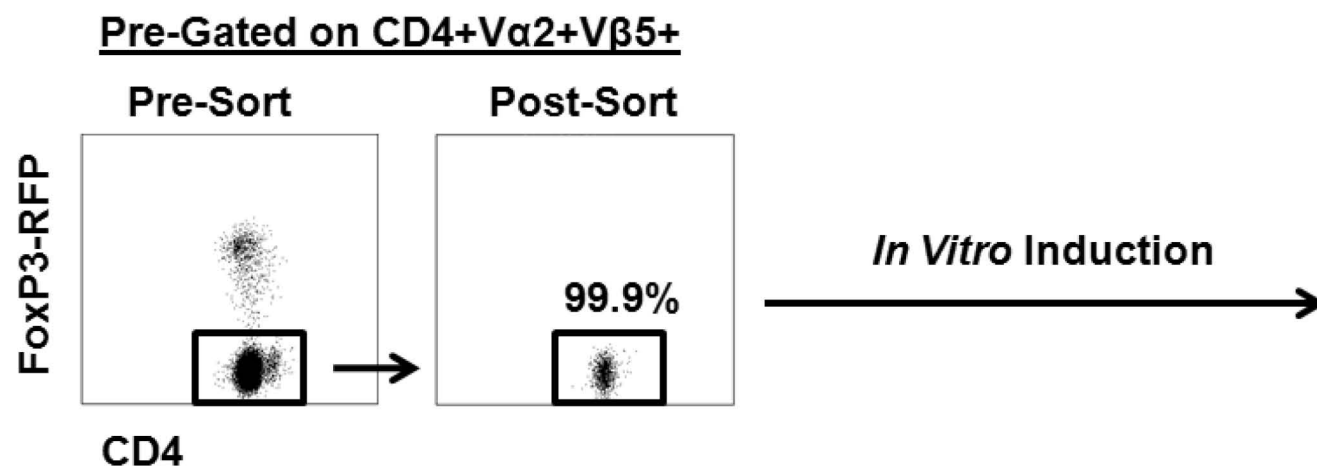
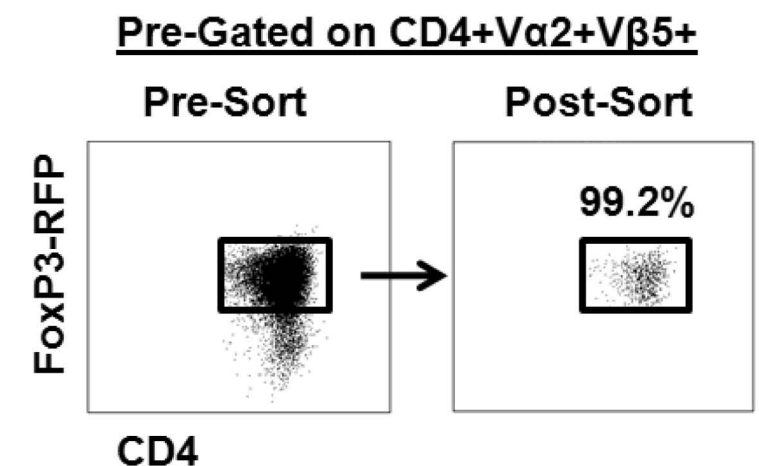
Taylor H. Schreiber, Dietlinde Wolf, Maria Boderro, Eckhard R. Podack

Oncolmmunology 2012; 1(7): DOI: 10.4161.onco.20298

<http://www.landesbioscience.com/journals/oncoimmunology/article/20298>

Primer Segment	Sequence (5' → 3')
<i>Vβ4</i>	GCCTCAAGTCGCTTCCAACCTC
<i>Vβ7</i>	TACAGGGTCTCACGGAAGAAGC
<i>Vβ8.2</i>	CATTATTCATATGGTGCTGGC
<i>Vβ8.3</i>	TGCTGGCAACCTTCGAATAGGA
<i>Vβ9</i>	TCTCTCTACATTGGCTCTGCAGGC
<i>Vβ11</i>	GCACTCAACTCTGAAGATCCAGAGC
<i>Vβ12</i>	GATGGTGGGGCTTTCAAGGATC
<i>Vβ14</i>	ACGACCAATTCATCCTAAGCAC
<i>Cβ</i>	CTTGGGTGGAGTCACATTTCT
<i>Jβ1.1</i>	FAM- ACT GTGAGTCTGGTTCCTTTACC

Supplemental Table 1: Primer sequences used for primary and secondary PCR reactions in TCR spectratyping analysis.

A.**B.****Polyclonal iTreg and nTreg Analysis Plots****C.****D.**

Supplemental Figure 1: Sorting and detection strategies for iTreg and nTreg populations. (A) Representative sorting strategy for purification of polyclonal Tconv (CD4+FoxP3-RFP negative) and nTreg (CD4+FoxP3-RFP positive) cells from FIR mice. (B) Representative analysis plots for detection of adoptively transferred polyclonal iTreg and nTreg in the mLN and spleen from CD4^{-/-} mice as shown in Figure 1. (C) Example sorting profile for OT-II Tconv cells from OT-II/FIR mice. For some experiments the OT-II Tconv were used directly, and for some experiments these cells were subsequently used for *in vitro* induction to OT-II iTreg and re-sorted as shown in (D).