

## SUPPLEMENTAL MATERIAL

### **Perinatal Nicotine Exposure Increases Vulnerability of Hypoxic-Ischemic Brain Injury in Neonatal Rats: Role of Angiotensin II Receptors**

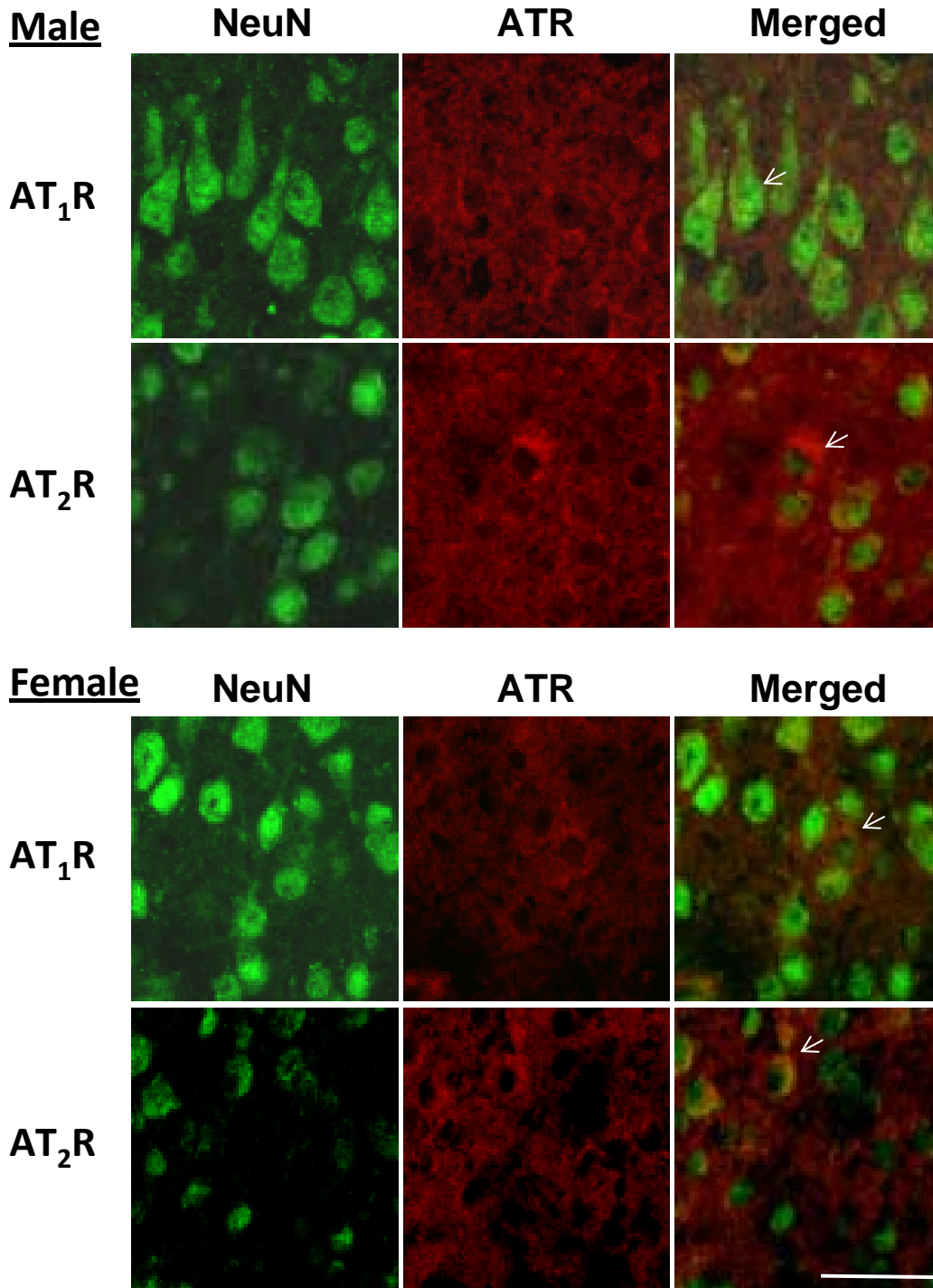
By

Yong Li, MD, Daliao Xiao, PhD, Chiranjib Dasgupta, PhD, Fuxia Xiong, MD, PhD,  
Wenni Tong, PhD, Shumei Yang, PhD, Lubo Zhang, PhD  
Center for Perinatal Biology (Y.L., D.X., C.D., F.X., W.T., L.Z.), Division of  
Pharmacology, Department of Basic Sciences, Loma Linda University School of  
Medicine, Loma Linda, CA; Department of Chemistry and Biochemistry (S.Y.),  
California State University, San Bernardino, CA; Department of Neurology (Y.L.), First  
Affiliated Hospital of Chongqing Medical University, Chongqing, China

#### **Correspondence and Reprint Requests:**

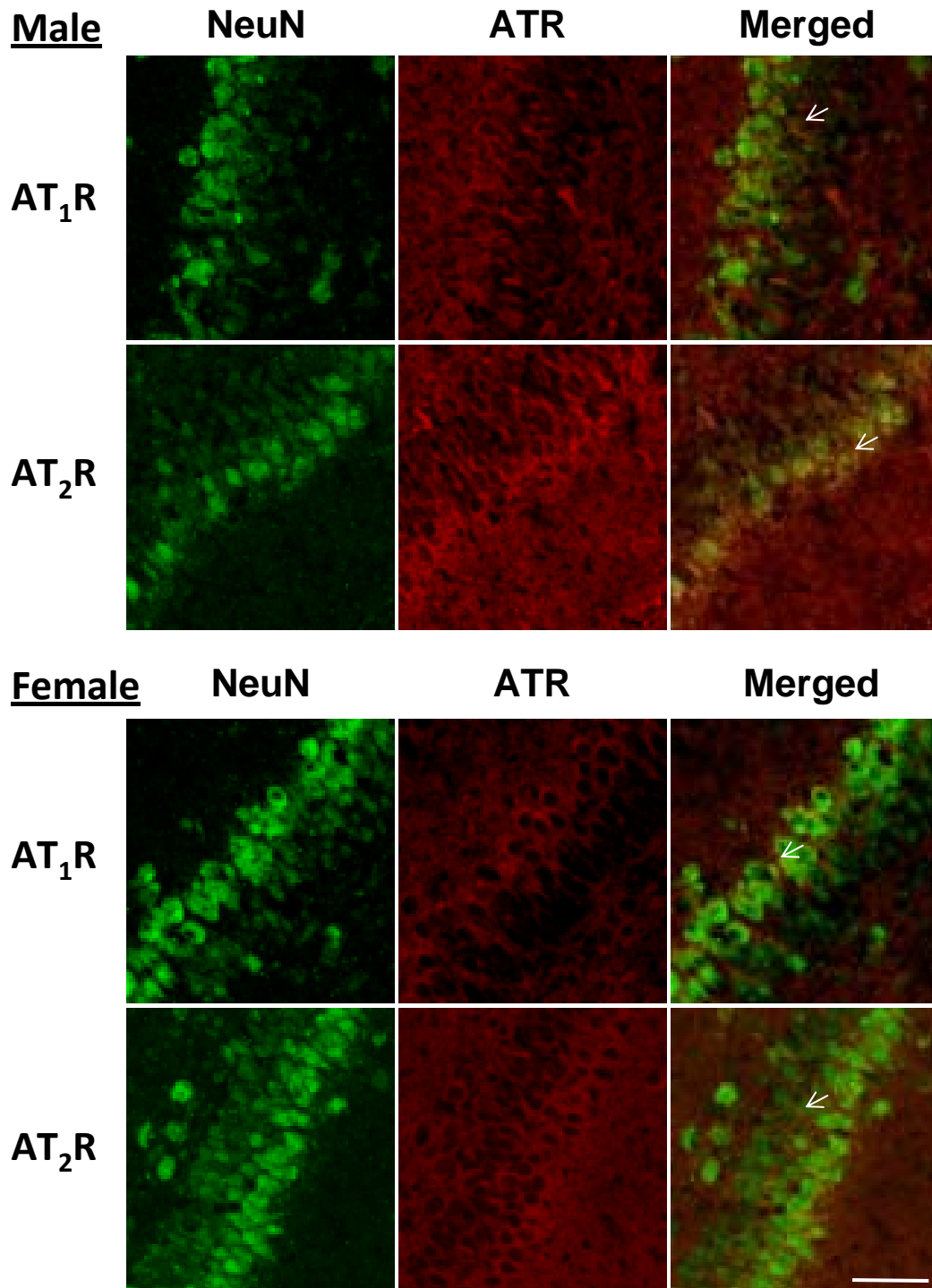
Lubo Zhang, PhD  
Center for Perinatal Biology  
Division of Pharmacology  
Department of Basic Sciences  
Loma Linda University  
School of Medicine  
Loma Linda, CA 92350  
Tel: 909-558-4325  
Fax: 909-558-4029  
Email: [lzhang@llu.edu](mailto:lzhang@llu.edu)

## Supplemental Material



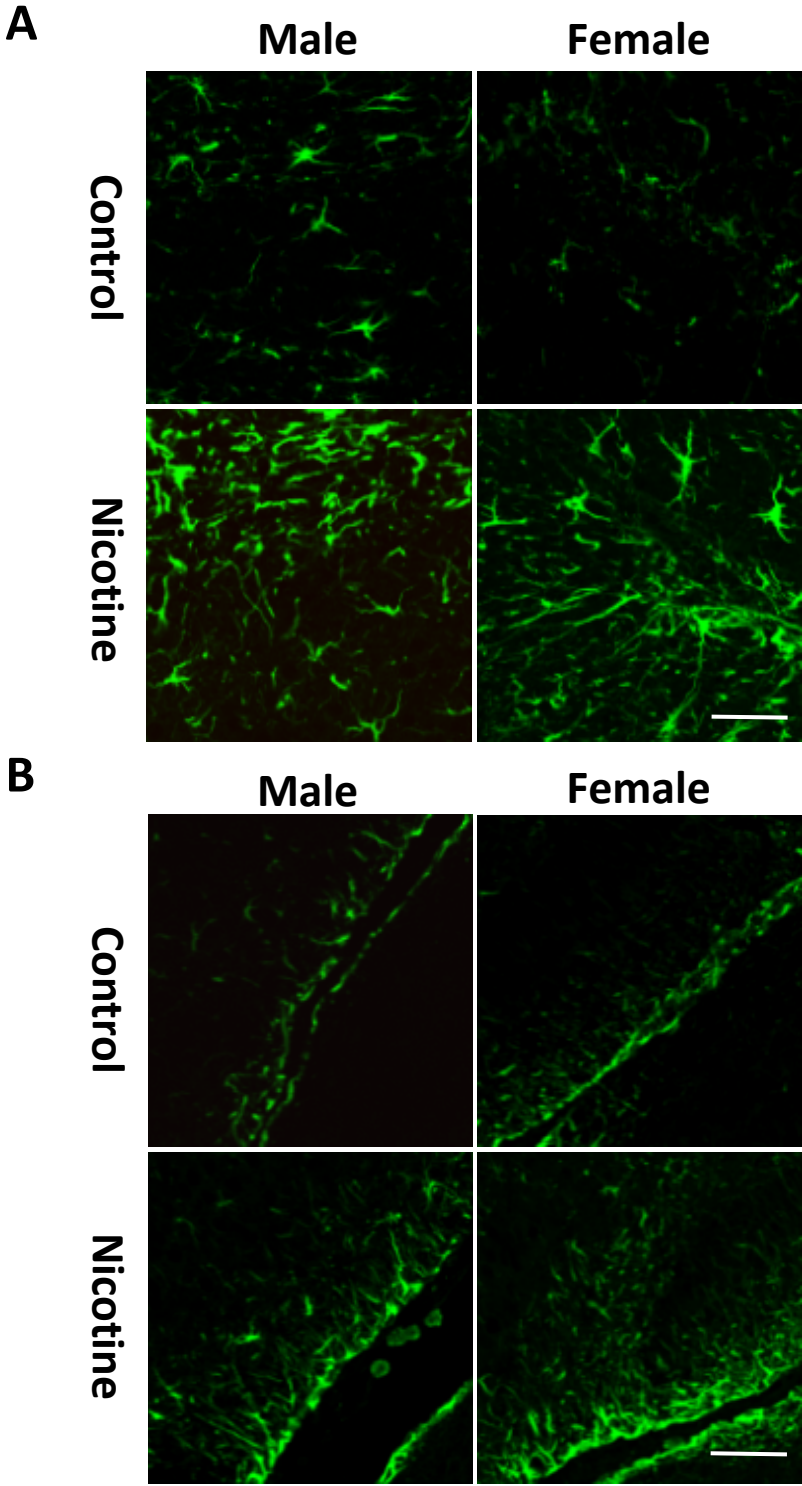
**Figure 1.** Immunoreactivity of AT<sub>1</sub>R and AT<sub>2</sub>R in the cortex of P10 pup brains. NeuN is visualized by FITC (green). AT<sub>1</sub>R and AT<sub>2</sub>R are visualized with Texas Red (red). Arrows show the peri-nuclear location of AT<sub>1</sub>R and AT<sub>2</sub>R. Scale bar: 50  $\mu$ m. Representative immunofluorescence confocal images of samples from 3 animals in each group are shown.

## Supplemental Material



**Figure 2.** Immunoreactivity of AT<sub>1</sub>R and AT<sub>2</sub>R in the hippocampus of P10 pup brains. NeuN is visualized by FITC (green). AT<sub>1</sub>R and AT<sub>2</sub>R are visualized with Texas Red (red). Arrows show the peri-nuclear location of AT<sub>1</sub>R and AT<sub>2</sub>R. Scale bar: 50  $\mu$ m. Representative immunofluorescence confocal images of samples from 3 animals in each group are shown.

**Supplemental Material**



**Figure 3.** Immunostaining of astrocytes with GFAP in the cortex (A) and hippocampus (B) of P10 pup brains. Scale bar: 50  $\mu$ m. Representative immunofluorescence confocal images of samples from 3 animals in each group are shown.