

Involvement of Disperse Repetitive Sequences in Wheat/Rye Genome Adjustment

Supplementary Information

Figure S1. 20H1 Alignment. Full multiple alignments obtained with BioEdit of the expected segment of pSc20H (pSc20H_20H1) and 20H1 internal sequence amplified from rye and wheat-rye addition lines 1R, 5R and 6R.

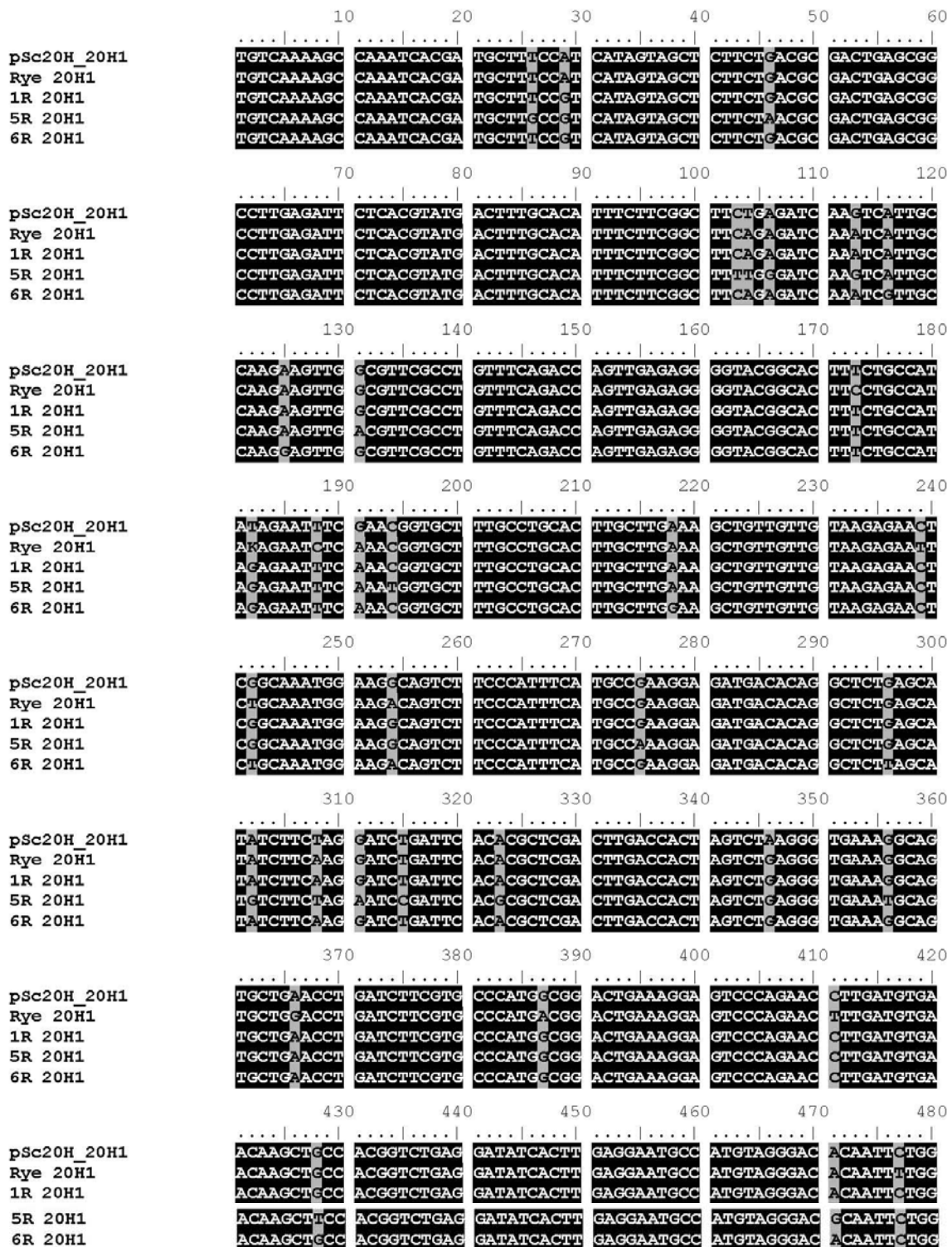


Figure S1. Cont.

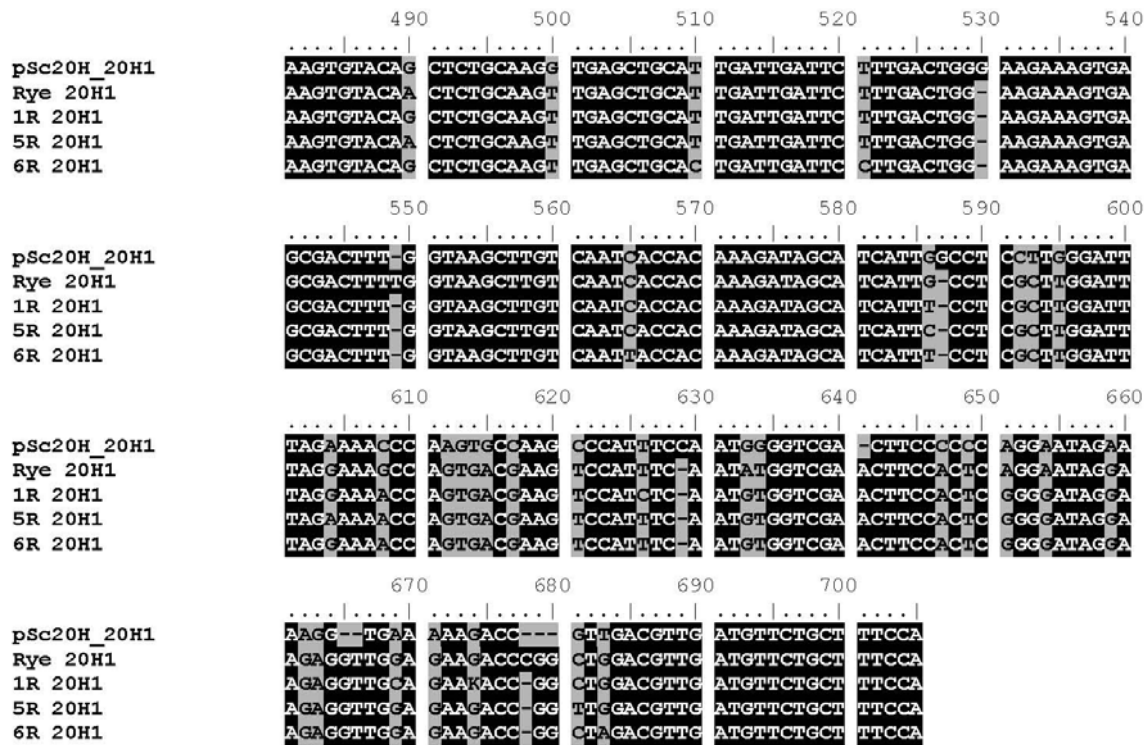


Figure S2. 20H1 Alignment. Full multiple alignments obtained with BioEdit of 20H1 internal sequence amplified from wheat and wheat-rye addition lines 3R, 4R and 7R and *T.aestivum* BAC400N24 (JF292901.1).

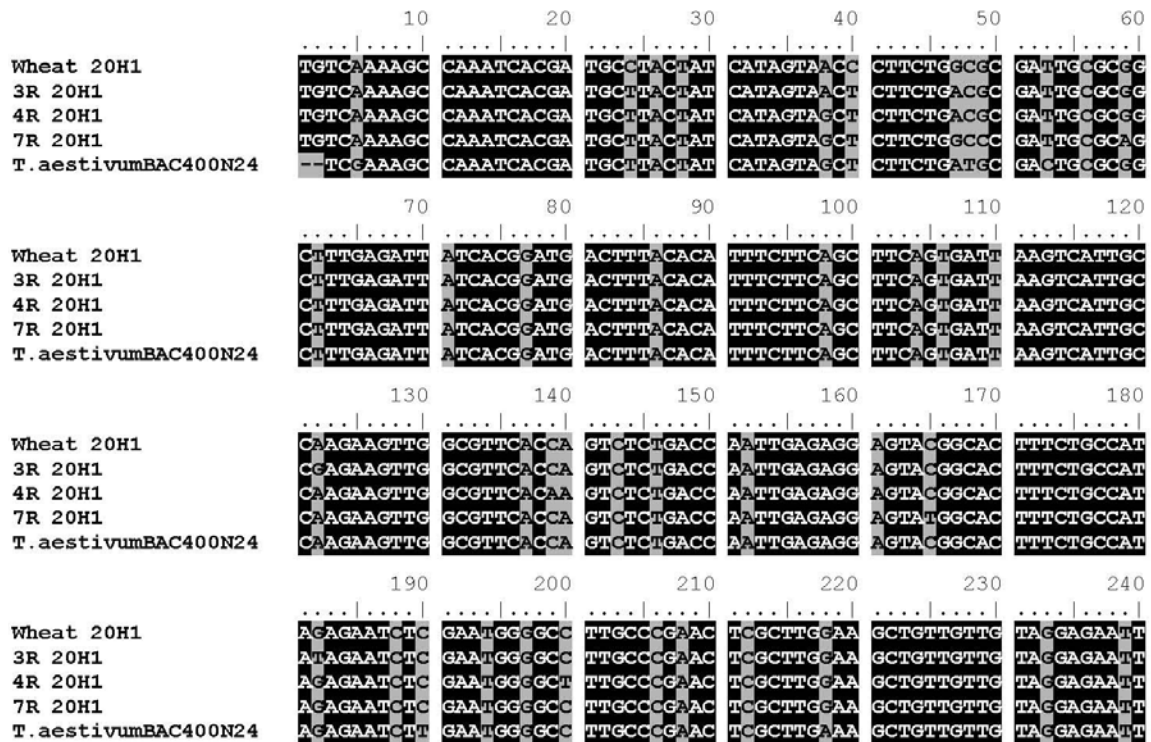


Figure S2. Cont.

