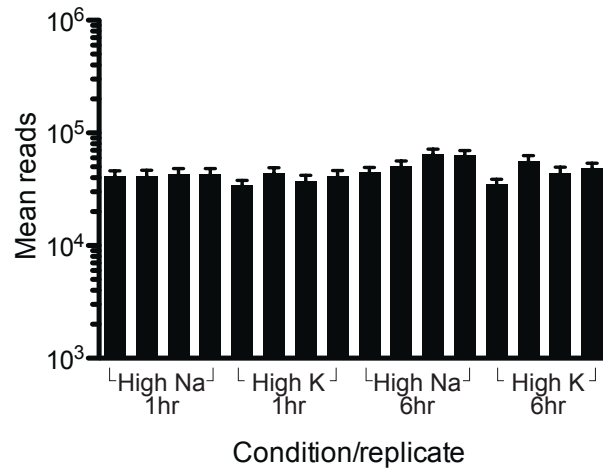
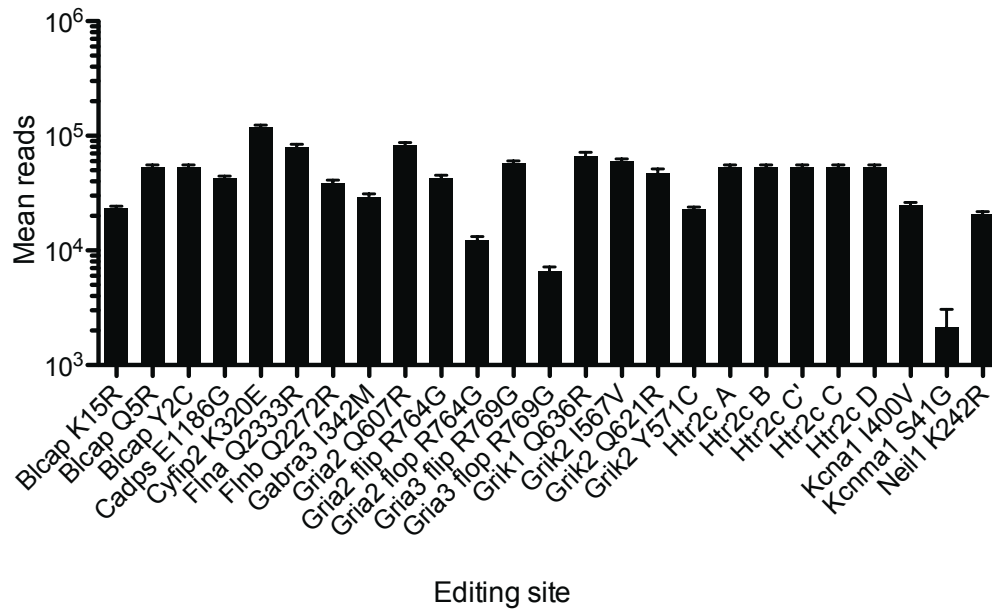
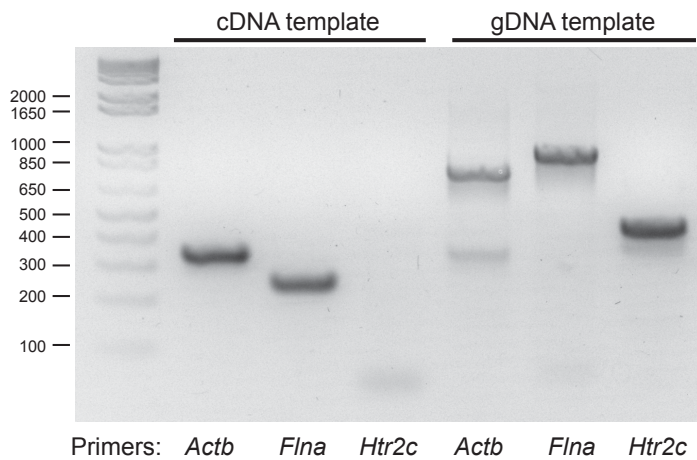


**A****B**

**Figure S1 Read uniformity across conditions and editing sites.** Counts of the average number of sequencing reads per editing site and per condition in one multiplexed Illumina sequencing run. **a**, Mean number of sequencing reads per condition/replicate averaged across editing sites ( $n=25$ ). In each condition in the sequencing run (High Na 1hr, High K 1hr, High Na 6hr, High K 6hr), reads counts are plotted for 4 separate biological replicates. **b**, Mean number of sequencing reads per editing site averaged across different conditions/replicates ( $n=12$ ). In both panels, error bars indicate s.e.m.



**Figure S2 Saturation PCR for gDNA contamination in cDNA.** Sample gel result from saturation PCR using 3 primers that produce different size bands depending on whether gDNA is present or not. (See Supplementary Table 1 for template-dependent band sizes.) The template used (cDNA from isolated RNA or gDNA) is labeled above the gel image and the primer is labeled below. None of the gDNA bands are present when cDNA is used as a template. This procedure was repeated for all extracted RNA to verify absence of gDNA contamination.

## File S1

### Supporting Materials and Methods

#### Primary cortical neuron culture

Dissociated P0 rat cortical neurons were obtained from animals of either sex using a protocol similar to one described elsewhere (BANKER and GOSLIN 1998; SANJANA and FULLER 2004). Briefly, cortical tissues were proteolyzed with papain for 40 min at 37°C, followed by rinsing and trituration in the plating medium. The plating medium consisted of serum-free Neurobasal-A without phenol red, with 2% B27 and 2 mM Glutamax (Gibco/Invitrogen) (BREWER *et al.* 1993). Cells were plated at a density of 200,000/mL on tissue-culture-treated plastic and placed in a 37°C 5% CO<sub>2</sub> incubator. Feeding of the culture was done with the same serum-free medium (50% replacement every 4 days *in vitro*).

#### Neuron activity modulation

For short-term activity modulation, neurons were depolarized for 1 or 6 hours with high potassium (60 mM) buffer (LIN *et al.* 2008). The depolarization buffer consisted of 120 mM KCl, 1.8 mM CaCl<sub>2</sub>, 0.8 mM MgCl<sub>2</sub>, 10 mM HEPES (pH 7.35, 285 mOsm). The control buffer was identical except 120 mM NaCl was substituted for KCl. Approximately 1 volume of the appropriate medium was added to the culture medium to achieve the desired final concentration. For short-term activity reduction, we bathed neurons in 2 μM TTX (Sigma) for 6 hours. In experiments where Ca<sup>2+</sup> was blocked, cultures were pre-treated with 2 mM EGTA for 30 minutes before adding a modified depolarization buffer with 2 mM EGTA.

For long-term activity modulation, neurons were placed in culture media supplemented with 2 μM TTX, 20 μM bicuculline methiodide (Tocris), or the same amount of new Neurobasal-A (control) for 48 hours (TURRIGIANO *et al.* 1998; WIERENGA *et al.* 2006). After 24 hours, half of the culture media was replaced with fresh media and/or drug treatments.

#### RNA extraction and cDNA library creation

Total RNA and gDNA were purified from neuron cultures (Qiagen AllPrep). For each sample, 0.5-1 μg of isolated RNA was reverse-transcribed in a 20-40 μl reaction volume using a mixture of random hexamer and oligo-dT primers (qScript cDNA SuperMix). To ensure no gDNA contamination was introduced during RNA isolation, PCR was conducted on cDNA templates (50 cycles, Invitrogen Platinum PCR SuperMix High Fidelity 12532-016). We used two exon-spanning primers sets (*Actb*, *Flna*) that produce smaller amplicons for cDNA templates and one primer set (*Htr2c*) that only hybridizes to an intronic sequence (Supplementary Figure 2). (See Supplementary Table 1 for primer sequences.)

#### Quantitative PCR of immediate early genes and adenosine deaminases

Relative transcript abundance was calculated by the ΔΔCt method with primer efficiencies derived from standard curves (Microsoft Excel 2008) (PFAFFL 2001). For primer sequences, see Supplementary Table 2. Two-tailed *t*-tests ( $\alpha=0.05$ ) were used to test for significant differences in expression from a matched control after first testing for equality of variances using Bartlett's test (Matlab R2009a). Data with unequal variance was first log-transformed and then re-tested for equal variance before applying *t*-tests.

### Identification of A-to-I editing sites in rat exons

Recent studies have found that A-to-I RNA editing is extremely abundant in human transcripts (ATHANASIADIS *et al.* 2004; BLOW *et al.* 2004; KIM *et al.* 2004; LEVANON *et al.* 2004). However, most of these sites are located in regions that are not evolutionary conserved and have no corresponding position in the rat genome. In order to study RNA editing in the rat, we collected almost all of the known evolutionary conserved, exonic editing sites in human (ATHANASIADIS *et al.* 2004; BLOW *et al.* 2004; HOOPENGARDNER *et al.* 2003; LI *et al.* 2009) and found their position in the rat genome using the Batch Coordinate Conversion (liftOver) utility at the UCSC Genome Browser (FUJITA *et al.* 2011). The location of each site was verified manually by comparison of the human and rat protein sequence at the position.

### Editing transcript PCR and Illumina sequencing library preparation

For each cDNA sample, a PCR reaction was carried out with primer pairs flanking the editing site(s) in each transcript (see Supplementary Table 3 for primer sequences). We set up a 20  $\mu$ l PCR reaction containing 10  $\mu$ l of KAPA SYBR FAST Universal 2X qPCR Master Mix, 0.5  $\mu$ l of cDNA template, and 500 nM each of forward and reverse primers. At the 5' end of the forward primer, we added a common sequence (Supplementary Table 4) followed by a 4-base unique barcode sequence (Supplementary Table 5) and then the editing site-specific sequence (Supplementary Table 3). At the 5' end of the reverse primer, we added similar site-specific and common sequences but no barcode. The PCR program is: 95°C for 3 minutes, 40 cycles of 95°C for 3 seconds and 60°C for 30 seconds, and 72°C for 3 minutes. Twelve PCR products with different barcodes were pooled. For each pool, we carried out a 100  $\mu$ l of PCR reaction to attach sequencing adaptors containing 50  $\mu$ l of KAPA SYBR FAST Universal 2X qPCR Master Mix, 5  $\mu$ l of mixed PCR products, and 500 nM each of PAGE-purified primers. The PCR program used was: 95°C for 3 minutes, 8 cycles of 95°C for 3 seconds and 60°C for 30 seconds, and 72°C for 3 minutes. After purification (Qiagen QiaQuick), each pool of 12 samples was sequenced in one lane of Illumina GAIIx.

### Sequencing read alignment and RNA editing quantification

Reads were converted into Sanger FASTQ format using the Mapping and Assembly with Qualities (MAQ) package (LI *et al.* 2008) and 4-base barcodes were used to separate reads into experimental conditions (Figure 2b). Barcodes differed by at least 2 bases from each other (Supplementary Table 5), preventing any sample misidentification due to single nucleotide sequencing error. Almost all reads (>98%) had a perfect match to one of the 12 possible 4-base barcodes in their first 4 nucleotides. Reads without a perfect barcode match in this location were discarded and not analyzed further. Reads were aligned to reference sequences using BWA (Burrows-Wheeler Aligner) (LI and DURBIN 2009) with the maximum number of allowable mismatches equal to maximum number of editing sites expected in a single read. To detect significant changes in editing levels, we conducted two-sample *t*-tests for each editing site with Benjamini-Hochberg false-discovery rate multiple hypothesis correction (BENJAMINI and HOCHBERG 1995) with type I error rate  $\alpha=0.05$  (Matlab R2009a). The margin of error in the editing proportion at 95% confidence was estimated using Bernoulli parameter  $p=0.5$ , making it an upper bound: margin of error  $\approx 0.98/(\text{reads})^{0.5}$ . The mean and standard error of the change in editing across 4 biological replicates for each experiment is shown in Supplementary Table 6.

#### LITERATURE CITED

- ATHANASIADIS, A., A. RICH and S. MAAS, 2004 Widespread A-to-I RNA editing of Alu-containing mRNAs in the human transcriptome. *PLoS biology* **2**: e391.
- BANKER, G., and K. GOSLIN, 1998 *Culturing nerve cells*. MIT Press, Cambridge, Mass.
- BENJAMINI, Y., and Y. HOCHBERG, 1995 Controlling the false discovery rate: a practical and powerful approach to multiple testing. *Journal of the Royal Statistical Society. Series B (Methodological)* **57**: 289-300.
- BLOW, M., P. A. FUTREAL, R. WOOSTER and M. R. STRATTON, 2004 A survey of RNA editing in human brain. *Genome research* **14**: 2379-2387.
- BREWER, G. J., J. R. TORRICELLI, E. K. EVEGE and P. J. PRICE, 1993 Optimized survival of hippocampal neurons in B27-supplemented Neurobasal, a new serum-free medium combination. *Journal of neuroscience research* **35**: 567-576.
- FUJITA, P. A., B. RHEAD, A. S. ZWEIG, A. S. HINRICH, D. KAROLCHIK *et al.*, 2011 The UCSC Genome Browser database: update 2011. *Nucleic acids research* **39**: D876-882.
- HOOPENGARDNER, B., T. BHALLA, C. STABER and R. REENAN, 2003 Nervous system targets of RNA editing identified by comparative genomics. *Science* **301**: 832-836.
- KIM, D. D., T. T. KIM, T. WALSH, Y. KOBAYASHI, T. C. MATISE *et al.*, 2004 Widespread RNA editing of embedded alu elements in the human transcriptome. *Genome research* **14**: 1719-1725.
- LEVANON, E. Y., E. EISENBERG, R. YELIN, S. NEMZER, M. HALLEGGGER *et al.*, 2004 Systematic identification of abundant A-to-I editing sites in the human transcriptome. *Nature biotechnology* **22**: 1001-1005.
- LI, H., and R. DURBIN, 2009 Fast and accurate short read alignment with Burrows-Wheeler transform. *Bioinformatics* **25**: 1754-1760.
- LI, H., J. RUAN and R. DURBIN, 2008 Mapping short DNA sequencing reads and calling variants using mapping quality scores. *Genome research* **18**: 1851-1858.
- LI, J. B., E. Y. LEVANON, J. K. YOON, J. AACH, B. XIE *et al.*, 2009 Genome-wide identification of human RNA editing sites by parallel DNA capturing and sequencing. *Science* **324**: 1210-1213.
- LIN, Y., B. L. BLOODGOOD, J. L. HAUSER, A. D. LAPAN, A. C. KOON *et al.*, 2008 Activity-dependent regulation of inhibitory synapse development by Npas4. *Nature* **455**: 1198-1204.
- PFAFFL, M. W., 2001 A new mathematical model for relative quantification in real-time RT-PCR. *Nucleic acids research* **29**: e45.
- SANJANA, N. E., and S. B. FULLER, 2004 A fast flexible ink-jet printing method for patterning dissociated neurons in culture. *Journal of neuroscience methods* **136**: 151-163.
- TURRIGIANO, G. G., K. R. LESLIE, N. S. DESAI, L. C. RUTHERFORD and S. B. NELSON, 1998 Activity-dependent scaling of quantal amplitude in neocortical neurons. *Nature* **391**: 892-896.
- WIERENGA, C. J., M. F. WALSH and G. G. TURRIGIANO, 2006 Temporal regulation of the expression locus of homeostatic plasticity. *Journal of neurophysiology* **96**: 2127-2133.

**Table S1 Primers to test cDNA for gDNA contamination**

Intron-spanning or intron-annealing primers to verify absence of gDNA in prepared cDNA libraries. *Actb* and *Flna* are exon-spanning and *Htr2c* only amplifies an intronic sequence.

Gene	Forward primer	Reverse primer	RNA band (bp)	DNA band (bp)
<i>Actb</i>	CTAAGGCCAACCGTGAAAAG	GCTCGAAGTCTAGGGCAACA	339	805
<i>Flna</i>	AAAGGATGGCTCTTGTGGTG	CTATGCACCTTGGCATCAAT	246	988
<i>Htr2c</i>	AACCGATCAAACGCAATGTT	CAATGCTATCATCACTGGGAAA	None	454

**Table S2 qRT-PCR primers for immediate early genes**

Forward and reverse primers used for quantitative reverse-transcription polymerase chain reaction (qRT-PCR) to measure expression levels of activity-induced immediate early genes *Arc* and *BDNF*.

Gene	Forward primer	Reverse primer
<i>Arc</i>	CCTCTCAGGGTGAGCTGAAG	AGTCATGGAGCCGAAGTCTG
<i>Bdnf</i>	GCGGCAGATAAAAAGACTGC	GCAGCCTTCCTTCGTGTAAC
<i>Gapdh</i>	GCATCCTGCACCACCAACTG	ACGCCACAGCTTCCAGAGG

**Table S3 Editing site sequences for primers**

Primers for amplification of short amplicons that include editing sites within a few bases of one of the primers. For some transcripts, editing sites were spaced further than could reliably be captured in a single short read: For those transcripts, multiple primer pairs were used to capture all editing sites. *Italics* indicates sequence/primer closest to editing site(s).

Gene	Forward primer	Reverse primer
Blcap (1)	<i>CTGCCCGTCTCTCATC</i>	AATCGGAGCAGTGGTACAGG
Blcap (2)	<i>GCCCGGCAGAGATCATGT</i>	CAGGAAGACCAGGGCACATA
Cadps	<i>GGATGTCTTCGTGATAAGGTC</i>	CCGATTTTGAATGGTCTCAT
Cyfp2	AGCTGGATGCCAAGAAGAGA	<i>CTCTTCATAGTGAGCACTGGTCT</i>
Flna	<i>CGCCGCCTTACTGTTTCTAGT</i>	GGATGAAACGCACAGCATA
Flnb	<i>GCTGCCTCACTGTTCTGAGC</i>	CATTCTCATGGGGATGAAG
Gabra3	GGCTACTTTGTCATCCAGACC	<i>GAAAATACAAAGGCATAACAGACG</i>
Gria2 (1)	<i>TTTCCTTGGGTGCCTTTATG</i>	CTTTCGATGGGAGACACCAT
Gria2 (2)	<i>CATCGCCACACCTAAAGGAT</i>	CAATCAAAGCCACCAGCATT
Gria3	<i>GCAACCCCTAAAGGCTCAG</i>	TATAGAACACGCCTGCCACA
Grik1	<i>TGGAGTTGGAGCTCTCATGC</i>	ATGGGGGATTCCATTCTTTC
Grik2 (1)	<i>TCTCCCTGATATCTGGATGTA</i>	AGAGCTCCTCACTCAAACCA
Grik2 (2)	ATGGAATGGAATGGTTCGTG	<i>GCACACAACCTGACACCCAAG</i>
Grik2 (3)	<i>TGGAGTTGGAGCTCTCATGC</i>	ATGCGTTCCACAGTCAGAAA
Htr2c (1)	<i>ATCGCTGGACCGGTATGTAG</i>	TCACGAACACTTTGCTTTCG
Htr2c (2)	AGATATTTGTCCCCGTCTG	<i>GAATTGAACCGCTATGCTC</i>
Kcna1	<i>CATCGCTGGTGTGCTGAC</i>	CCTGCCTGTAGTGGGCTATG
Kcnma1	CAGCAGTAGCAGCAACATGG	<i>AAGAAGAGGACGCGTCTAGG</i>
Neil1	TCTAGAGGCCCTGCAACAGT	<i>TTCTCTCCACGCTCTGG</i>



**Table S4 Sequences for universal primers**

Common primers used for attaching barcodes and sequencing adaptors. The first two primers are used in the first round of pre-sequencing PCR. The last two primers are used in the second round of pre-sequencing PCR.

Primer/purpose	Sequence
Forward common (followed by barcode and site-specific forward sequence)	CGACGCTCTCCGATCT
Reverse common (follows site-specific reverse sequence)	CATACGAGCTCTCCGATCT
Forward primer to attach sequencing adaptor	AATGATACGGCGACCACCGAGATCTACACTCTTCCCTACAG ACGCTCTCCGATCT
Reverse primer to attach sequencing adaptor	CAAGCAGAAGACGGCATAACGAGCTCTCCGATCT

**Table S5 Multiplex sequencing barcodes**

Barcodes used to pool multiple experimental conditions and/or replicates into a single Illumina flowcell lane. All barcodes differ by at least 2 nucleotides.

Barcodes		Barcodes	
1	CCTC	7	GGCA
2	ACCA	8	ATCC
3	TATA	9	GTCG
4	GACC	10	AGCT
5	CTTA	11	CAGT
6	TGTC	12	TCAG

**Table S6 Differences in A-to-I RNA editing for all treatments**

Mean difference in editing levels (fraction inosine) between indicated treatment and matched control. Significant differences ( $p < 0.05$ ,  $n = 4$  cultures, two-sample unpaired  $t$ -test, Benjamini-Hochberg false-discovery rate correction) are indicated by **bold text**.

Site	K 1hr vs. Na 1hr		K 6hr vs. Na 6hr		K+EGTA 6hr vs. Na 6hr		TTX 6hr vs. Na 6hr	
	<i>Mean</i>	<i>SE</i>	<i>Mean</i>	<i>SE</i>	<i>Mean</i>	<i>SE</i>	<i>Mean</i>	<i>SE</i>
Blcap K15R	-0.02	0.01	-0.01	0.01	0.01	0.01	<b>0.04</b>	0.01
Blcap Q5R	0.00	0.01	<b>-0.03</b>	0.01	0.01	0.01	<b>0.05</b>	0.01
Blcap Y2C	-0.01	0.02	<b>-0.05</b>	0.01	-0.01	0.01	<b>0.06</b>	0.01
Cadps E1186G	-0.01	0.01	0.00	0.02	-0.01	0.01	0.00	0.01
Cytip2 K320E	-0.01	0.01	<b>-0.11</b>	0.01	0.00	0.01	<b>0.09</b>	0.01
Flna Q2333R	0.01	0.01	<b>-0.03</b>	0.00	0.00	0.00	0.00	0.00
Flnb Q2272R	-0.05	0.03	<b>-0.12</b>	0.03	0.00	0.01	-0.02	0.01
Gabra3 I342M	0.01	0.05	-0.05	0.03	0.02	0.02	0.21	0.11
Gria2 Q607R	0.00	0.00	0.00	0.00	0.00	0.00	0.00	0.00
Gria2 flip R764G	-0.01	0.01	<b>-0.09</b>	0.02	0.03	0.02	<b>0.11</b>	0.02
Gria2 flop R764G	-0.07	0.03	<b>-0.17</b>	0.03	0.02	0.03	<b>0.09</b>	0.02
Gria3 flip R769G	-0.02	0.02	-0.04	0.02	0.01	0.01	<b>0.05</b>	0.01
Gria3 flop R769G	0.09	0.05	-0.02	0.06	0.00	0.02	0.02	0.03
Grik1 Q636R	0.03	0.04	-0.01	0.03	0.02	0.02	0.02	0.01
Grik2 I567V	0.00	0.01	<b>-0.05</b>	0.02	0.01	0.01	0.01	0.01
Grik2 Q621R	0.00	0.03	<b>-0.05</b>	0.01	0.00	0.01	0.00	0.01
Grik2 Y571C	0.00	0.01	-0.02	0.02	0.01	0.01	<b>0.06</b>	0.01
Htr2c A	0.07	0.03	0.01	0.04	-0.03	0.02	-0.01	0.02
Htr2c B	0.02	0.04	0.02	0.05	-0.01	0.02	-0.01	0.03
Htr2c C'	-0.01	0.02	-0.03	0.02	-0.01	0.01	-0.01	0.01
Htr2c C	-0.03	0.06	0.02	0.06	-0.01	0.02	-0.05	0.02
Htr2c D	-0.03	0.08	0.02	0.04	0.02	0.02	-0.02	0.02
Kcna1 I400V	-0.01	0.03	-0.05	0.02	0.00	0.01	0.01	0.01
Kcnma1 S41G	0.00	0.01	0.00	0.01	0.00	0.01	<b>0.02</b>	0.01
Neil1 K242R	0.00	0.00	0.00	0.00	-0.01	0.01	0.00	0.01

Site	TTX 48hr vs. NBA 48 hr		Bic 48hr vs. NBA 48hr	
	<i>Mean</i>	<i>SE</i>	<i>Mean</i>	<i>SE</i>
Blcap K15R	0.00	0.01	0.01	0.01
Blcap Q5R	-0.01	0.01	-0.02	0.01
Blcap Y2C	0.00	0.01	-0.02	0.01
Cadps E1186G	<b>-0.03</b>	0.01	<b>0.02</b>	0.00
Cyfp2 K320E	<b>-0.10</b>	0.01	0.02	0.01
Flna Q2333R	0.00	0.00	0.00	0.00
Flnb Q2272R	<b>-0.02</b>	0.01	-0.01	0.01
Gabra3 I342M	-0.06	0.04	-0.03	0.02
Gria2 Q607R	0.00	0.00	0.00	0.00
Gria2 flip R764G	<b>-0.11</b>	0.01	<b>0.06</b>	0.01
Gria2 flop R764G	<b>-0.10</b>	0.01	<b>0.06</b>	0.01
Gria3 flip R769G	<b>-0.14</b>	0.02	-0.02	0.02
Gria3 flop R769G	-0.16	0.06	0.01	0.03
Grik1 Q636R	0.07	0.02	0.03	0.01
Grik2 I567V	<b>-0.14</b>	0.01	0.00	0.01
Grik2 Q621R	<b>-0.12</b>	0.01	<b>-0.03</b>	0.01
Grik2 Y571C	<b>-0.13</b>	0.02	-0.03	0.02
Htr2c A	0.04	0.02	-0.05	0.02
Htr2c B	<b>0.08</b>	0.02	-0.04	0.03
Htr2c C'	0.00	0.01	<b>0.01</b>	0.00
Htr2c C	<b>-0.07</b>	0.02	0.01	0.03
Htr2c D	-0.01	0.06	<b>0.09</b>	0.02
Kcna1 I400V	<b>-0.04</b>	0.01	<b>0.03</b>	0.01
Kcnma1 S41G	-0.01	0.00	-0.01	0.01
Neil1 K242R	0.00	0.00	0.00	0.00